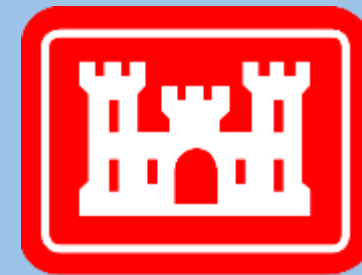


## Community Advisory Group

# Raymark Industries, Inc. Superfund Site Stratford, CT

Jim DiLorenzo, EPA  
Mike Looney, USACE  
Dave Heislein, USACE

September 29, 2021



**US Army Corps  
of Engineers®**

# Virtual Meeting Guidelines

- Everyone will be muted through the presentations - please stay muted to eliminate background noise.
- Hold questions until the end of the presentation.
- Use the chat box.
- Ask questions related to the presentation topic
- Please be respectful of time, so everyone has a chance to speak
- Mute yourself after speaking
- Be respectful and patient!
- Talk one at a time.
- **This meeting will be recorded.**

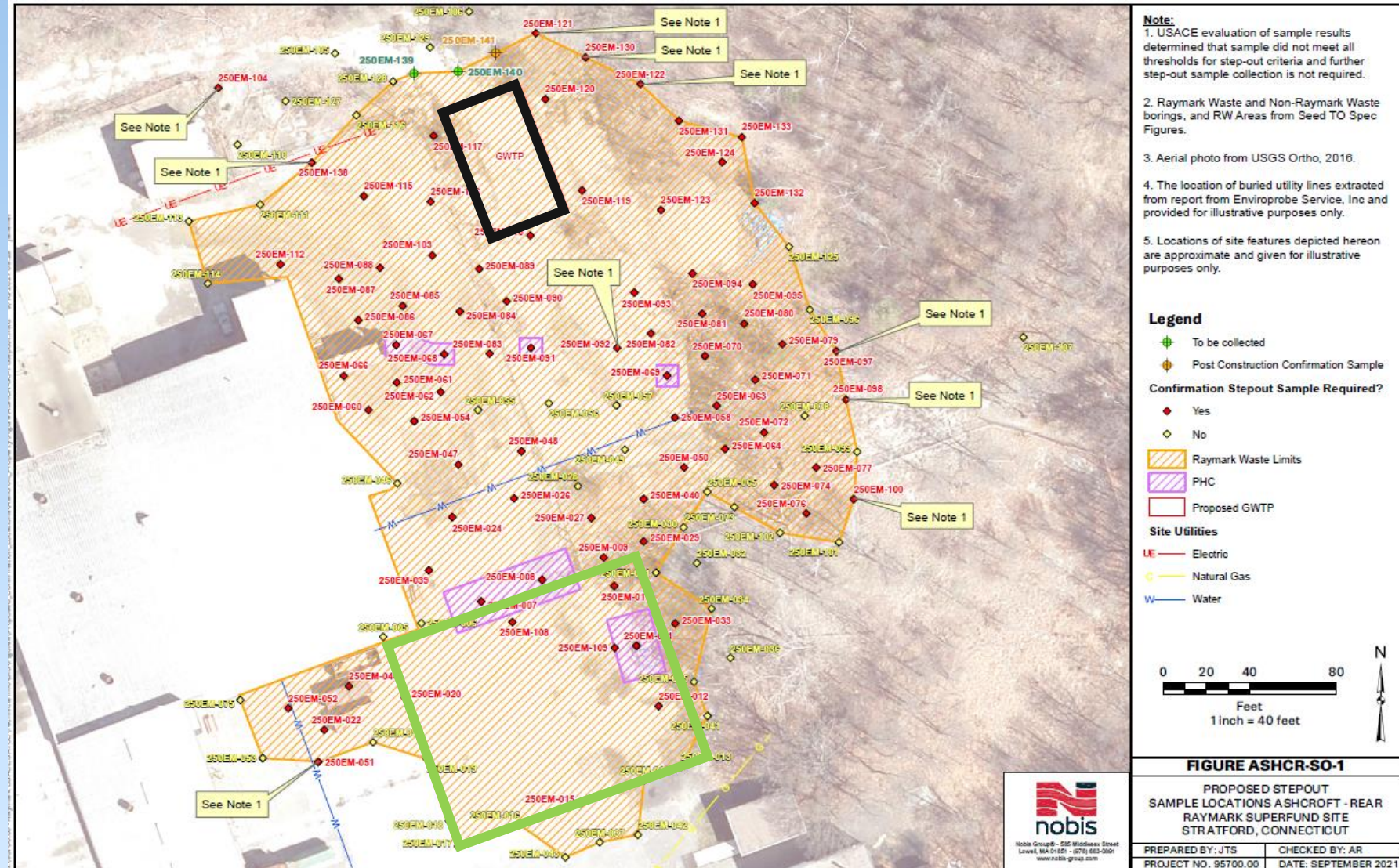
# AGENDA

- INTRODUCTIONS AND MEETING RULES
- OPERABLE UNIT 6 (OU6) UPDATES
- RAYBESTOS MEMORIAL FIELD (OU4)
- AIR MONITORING RESULTS

# OU6 Updates

# Ashcroft Rear

- Excavation began June 9
- Removed to date = 7,863yds (635 loads)
- Final estimate = 8,500yds
- Original = 1,500yds
- PHC waste removed = 377yds (35 loads)
- High water table
- Hurricane Ida
- Just under 400,000 gallons of gw treated





# Ashcroft Rear Starting Point



# Ashcroft Rear Behind Building





# Shallow Groundwater





# Ashcroft Rear Water Treatment System Secondary Containment





Dismantling  
the  
treatment  
plant





# Ashcroft Rear Covering Load





# Loaded and Leaving Ashcroft Rear



# Preparing to repave





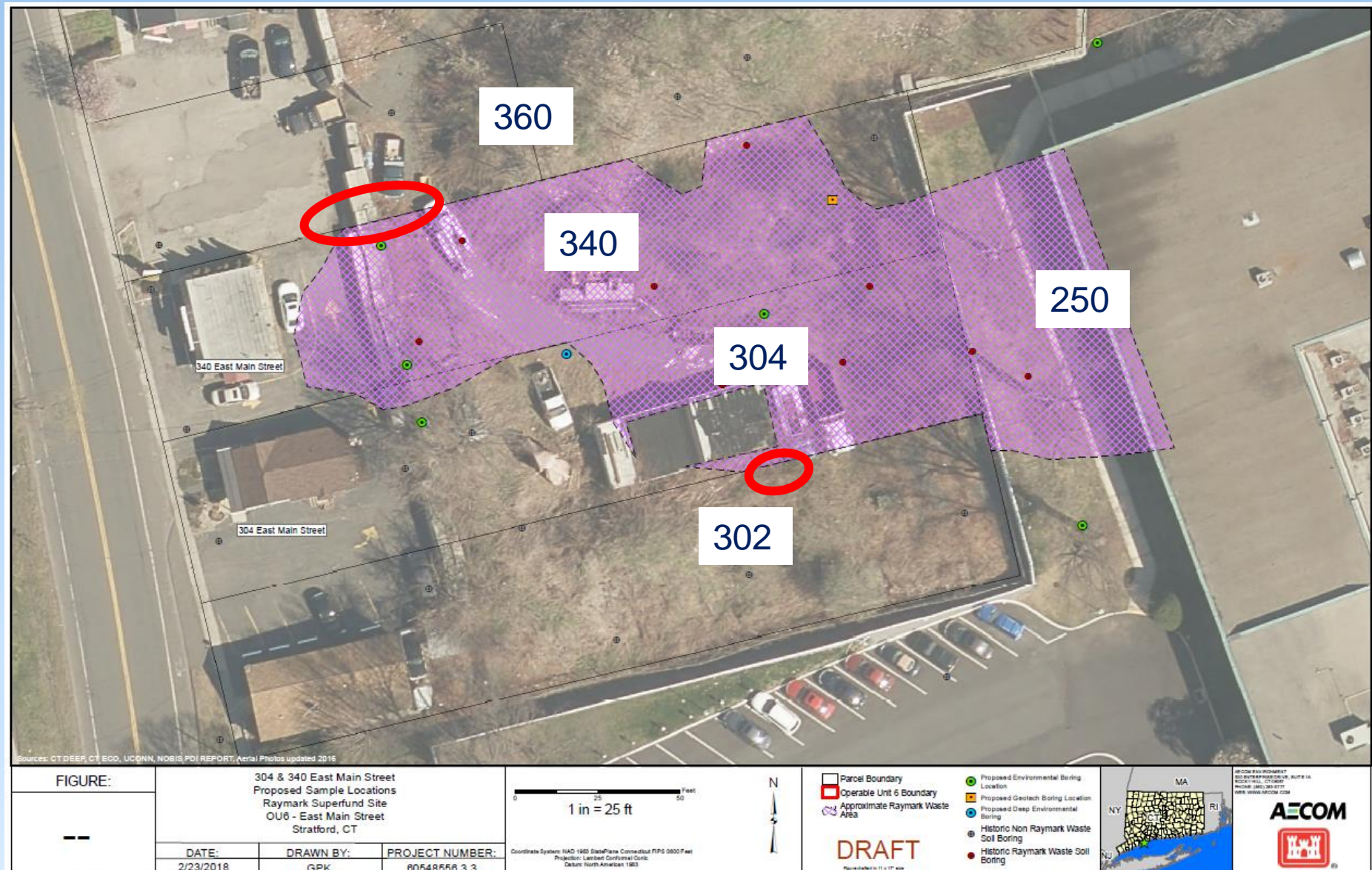
# Restored Pavement





# Raymark Waste on 302/360 East Main Street

Completed on September 15 and 18 - 127yds removed = 9 trucks







Excavation  
from 302 East  
Main Street

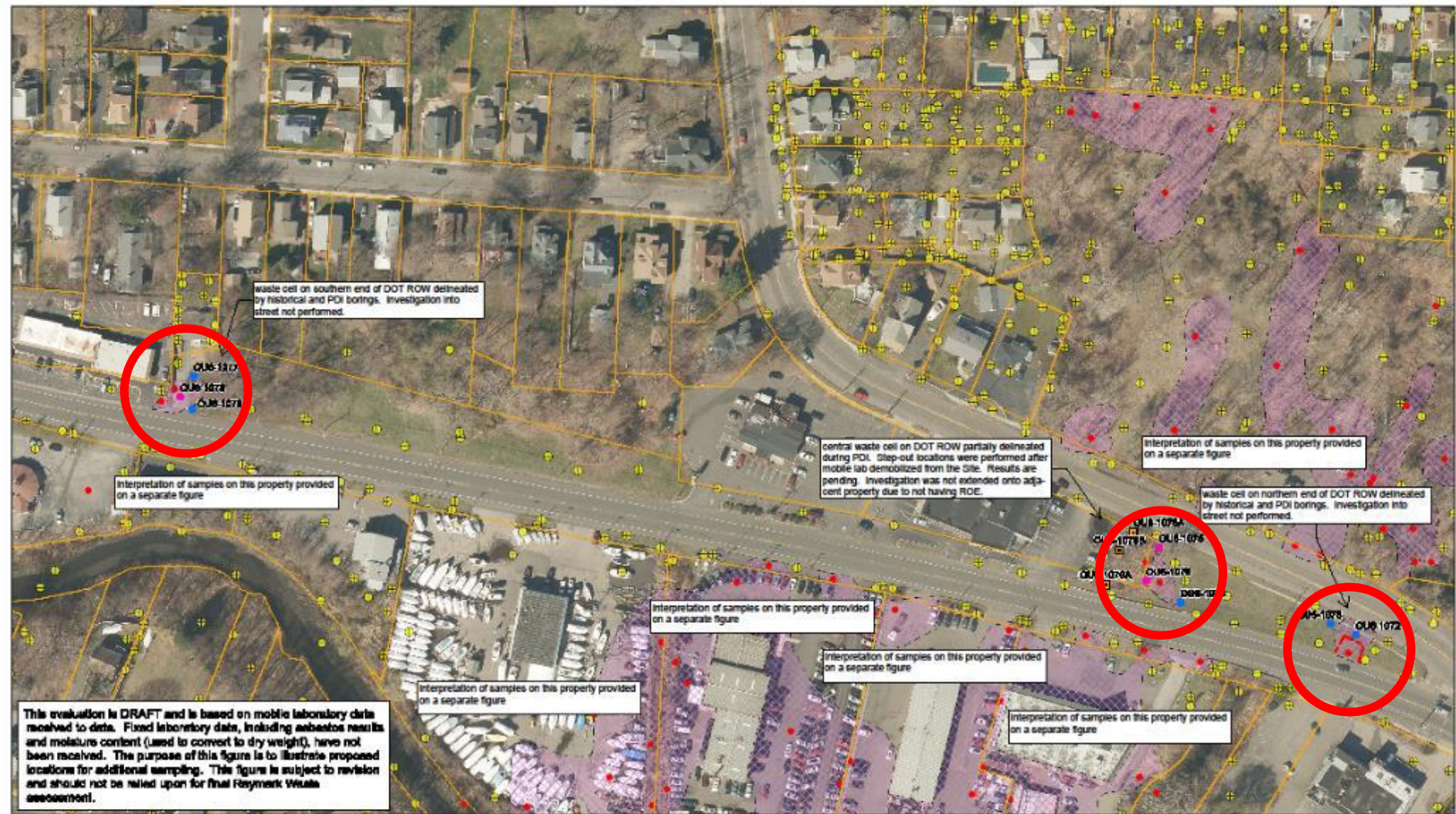




Excavation  
from 360 East  
Main Street



# DOT ROW along Ferry BLVD



This evaluation is DRAFT and is based on mobile laboratory data received to date. Fixed laboratory data, including asbestos results and moisture content (used to convert to dry weight), have not been received. The purpose of this figure is to illustrate proposed locations for additional sampling. This figure is subject to revision and should not be relied upon for final Raymond Waste assessment.

Mob on 9/20  
 App.900yds  
 60 trucks  
 (each area 300yds)  
 50yds  
 removed as  
 of last week  
 4 trucks  
 Mid-October

<b>FIGURE:</b>	<b>DRAFT</b>					<ul style="list-style-type: none"> <li>Waste Piling</li> <li>PDI Location Possibly Existing NY Based on Preliminary Data</li> <li>PDI Location Not Confirmed NY Based on Preliminary Data</li> <li>Historic Storage Identifying Raymond Waste</li> <li>Historic Storage Not Classified as Raymond Waste</li> </ul>		
<b>Preliminary PDI Results</b> <b>Raymark Superfund Site</b> <b>Storford, CT</b>	<b>DATE:</b> 12/13/2017	<b>DRAWN BY:</b> GPK	<b>PROJECT NUMBER:</b> 60548686.6.4					





**Note:**  
 Raymark Waste and Non-Raymark Waste borings, and RW Areas from the Remedial Design Drawings and Pre-Design Investigation.

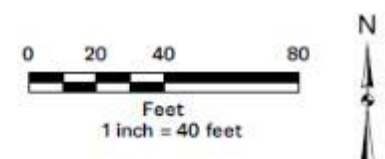
Property boundaries are derived from the Remedial Design Drawings.

Historical Samples 0-4' include samples collected from the following intervals: 0-4' bgs, 1-4' bgs, 2-4' bgs, 1-3' bgs, 2-3' bgs, and 3-4' bgs.

Historical Samples 0-2' include samples collected from less than or equal to 2' bgs.

Raymark Waste designation in historical samples are based on the Raymark Waste Criteria.

- Legend**
- Post-Construction Confirmation Sample
  - Confirmation Stepout Sample Required?**
    - Yes
    - No
  - AECOM PDI Samples**
    - Raymark Waste
    - Non-Raymark Waste
  - Historic Samples 0-4'**
    - Raymark Waste
    - Non-Raymark Waste
  - Historic Samples 0-2'**
    - Raymark Waste
    - Non-Raymark Waste
  - Approx. Survey Boundaries
  - Raymark Waste Limits



**FIGURE DOTROW-1A**  
 PROPOSED CONFIRMATION LOCATIONS  
 CT DOT ROW - NORTHERN PORTION  
 RAYMARK SUPERFUND SITE  
 STRATFORD, CONNECTICUT

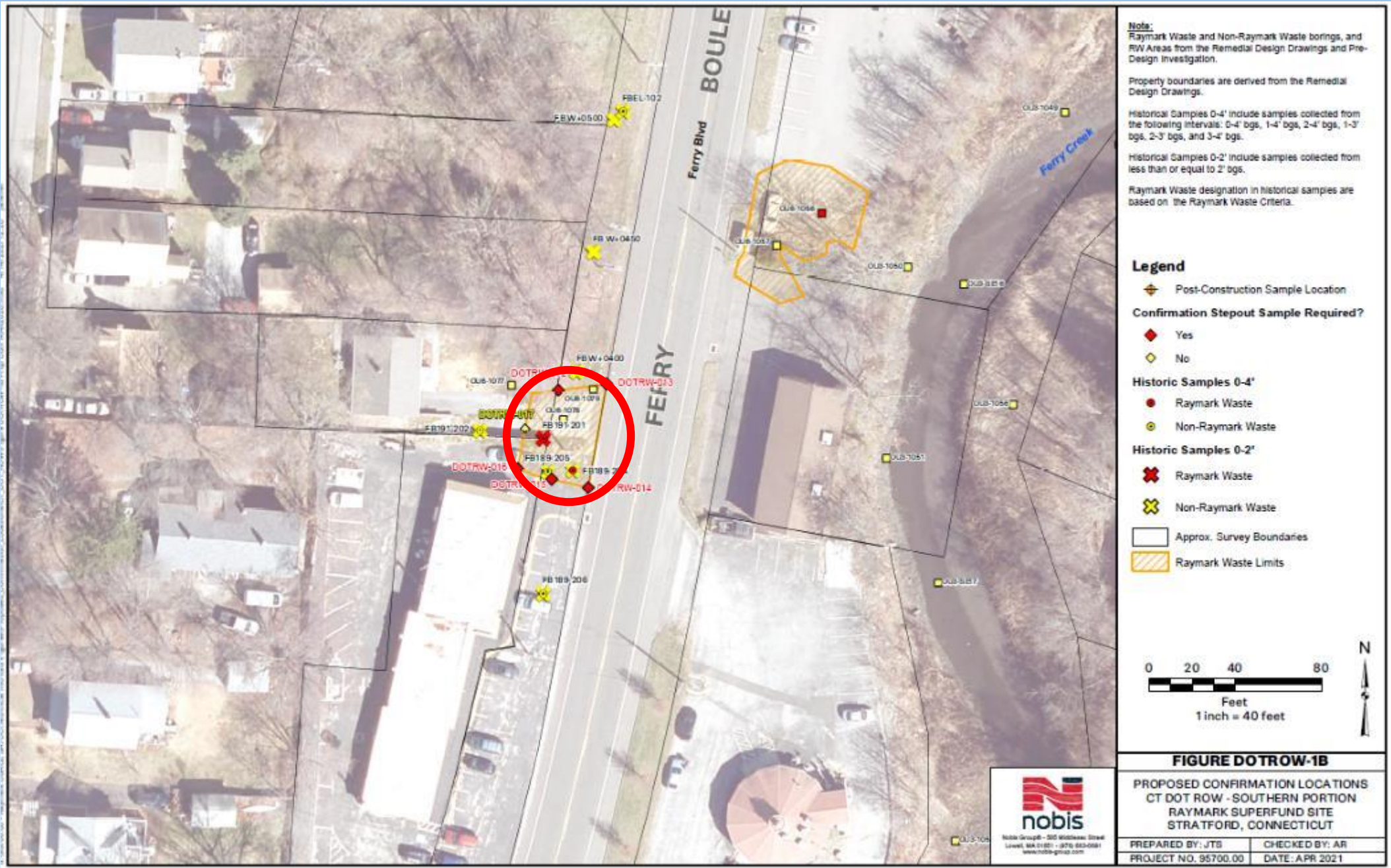
PREPARED BY: JTS	CHECKED BY: AR
PROJECT NO. 95700.00	DATE: APR 2021



# DOT ROW



# 171/191 Ferry Blvd







# Mobilizing to DOT ROW



# Excavation from DOT ROW







# Surveyor Confirming Depth of Excavation at DOT ROW

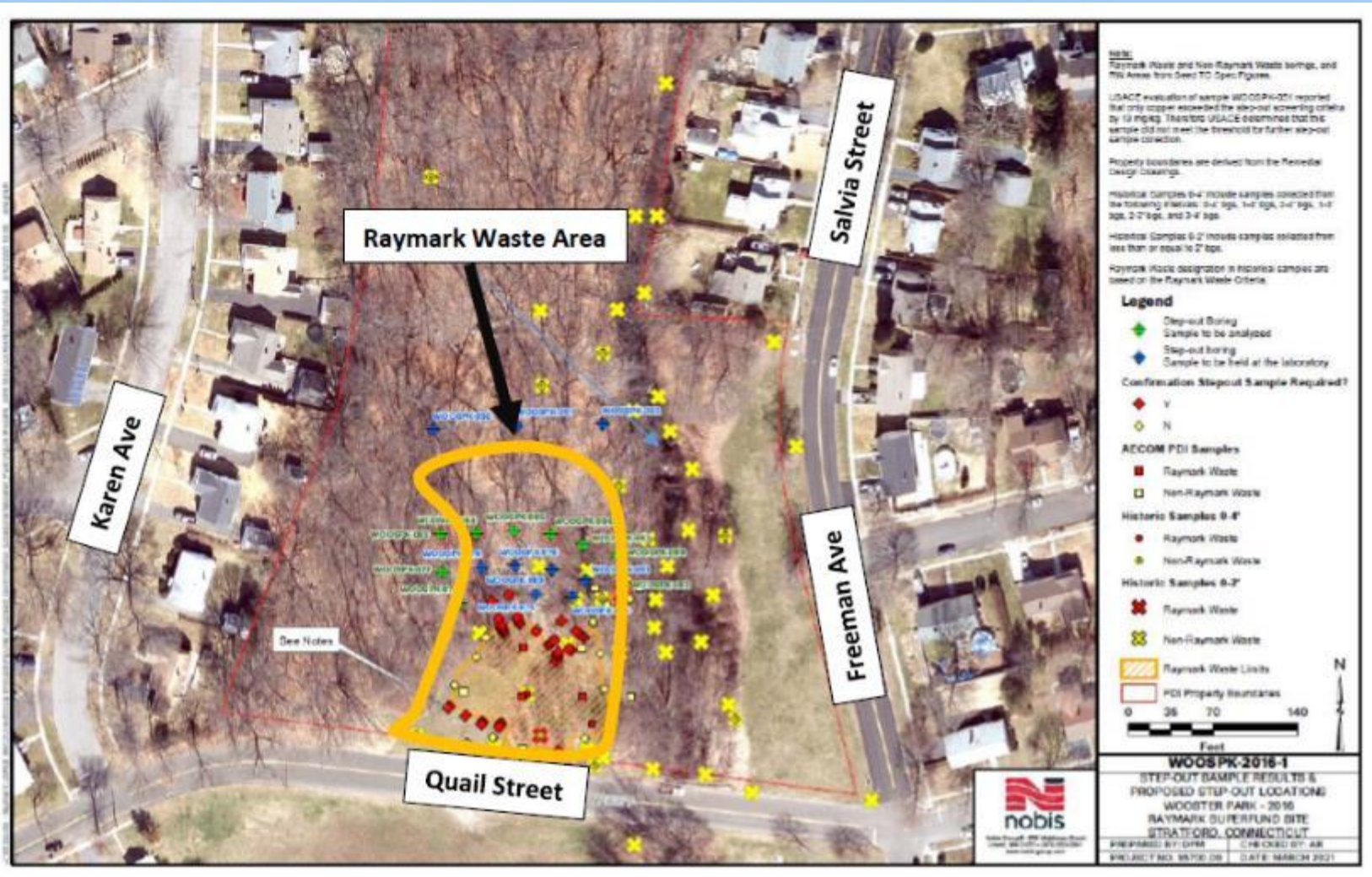


# Backfill and air monitoring station at DOT ROW





# Wooster Park



- Design Estimate = 1,500yds
- Current estimate = about 6,000yds (~350 trucks)
- About 500yds PHC (35)
- Tree clearing mid-Oct
- Start on Nov. 1, 2021
- About 12 weeks to complete
- First neighborhood public meeting held on May 12<sup>th</sup>
- Second meeting on Sept 22<sup>nd</sup>







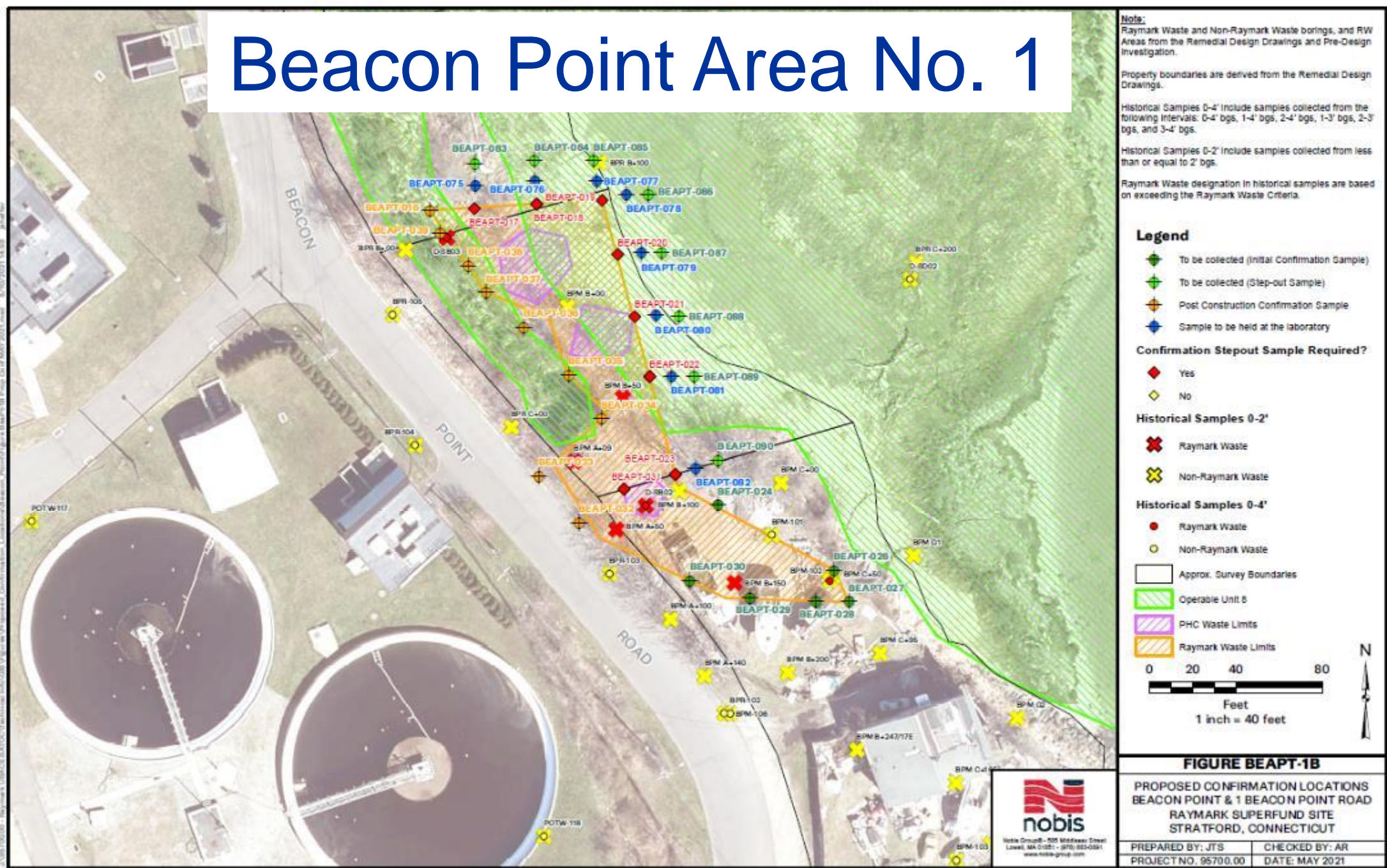
# Beacon Point



- 3 RW areas
- 3,250yds (210 trucks)
- Original est. 2,400yds
- 250 yds PHC waste (~20 trucks)
- Still chasing area 2
- App. Spring 2022
- About 8 weeks to complete

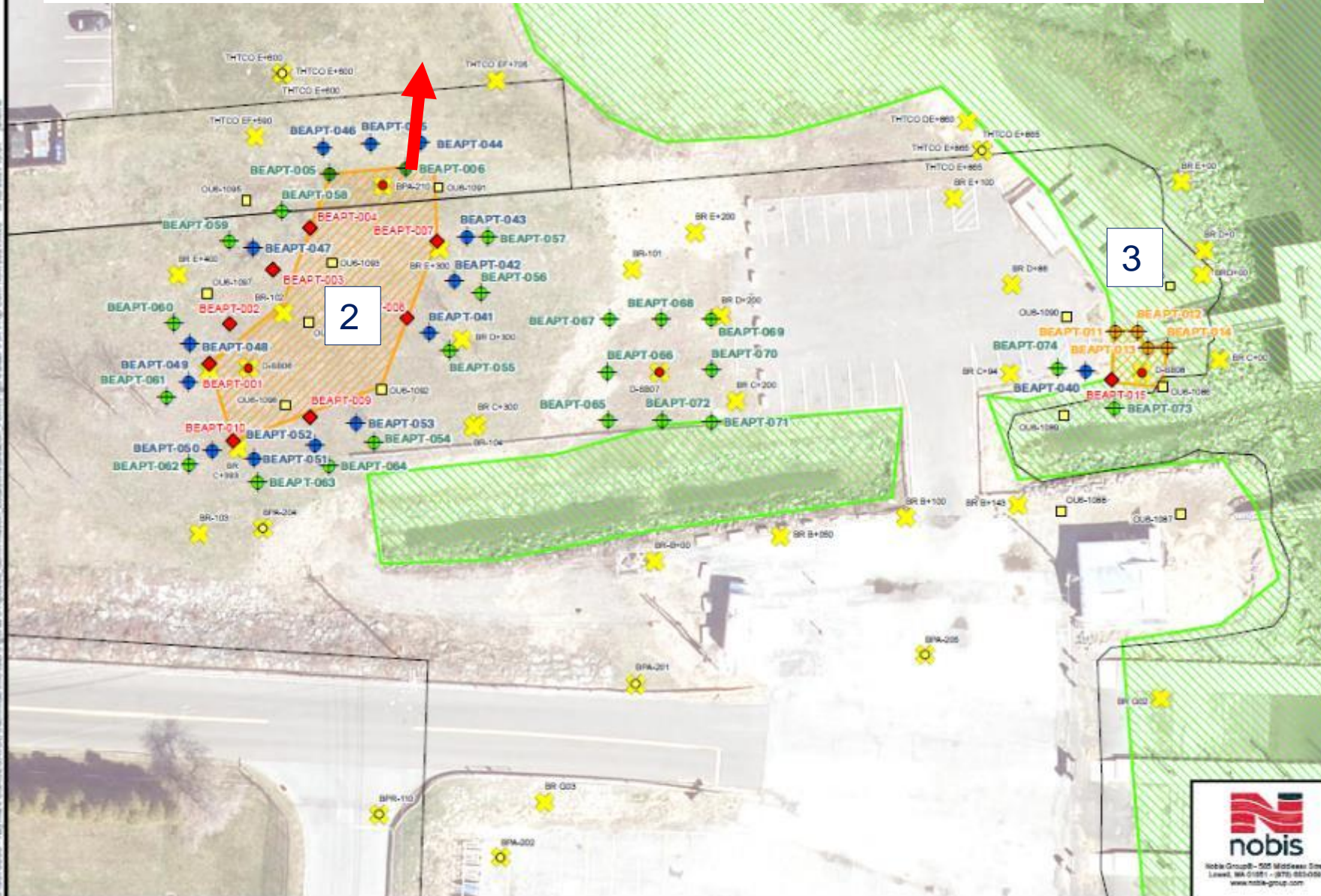


# Beacon Point Area No. 1



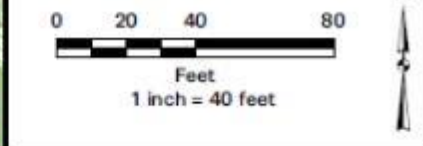


# Beacon Point Areas 2 and 3



**Notes:**  
 Raymark Waste and Non-Raymark Waste borings, and RW Areas from the Remedial Design Drawings and Pre-Design Investigation.  
 Property boundaries are derived from the Remedial Design Drawings.  
 Historical Samples 0-4' include samples collected from the following intervals: 0-4' bgs, 1-4' bgs, 2-4' bgs, 1-3' bgs, 2-3' bgs, and 3-4' bgs.  
 Historical Samples 0-2' include samples collected from less than or equal to 2' bgs.  
 Raymark Waste designation in historical samples are based on exceeding the Raymark Waste Criteria.

- Legend**
- ◆ To be collected (Initial Confirmation Sample)
  - ◇ To be collected (Step-out Sample)
  - ◆ Post Construction Confirmation Sample
  - ◆ Sample to be held at the laboratory
- Confirmation Stepout Sample Required?**
- ◆ Yes
  - ◇ No
- Historical Samples 0-4'**
- Raymark Waste
  - Non-Raymark Waste
- Historical Samples 0-2'**
- ✖ Raymark Waste
  - ✖ Non-Raymark Waste
- Approx. Survey Boundaries
  - Raymark Waste Limits
  - Operable Unit 8



**FIGURE BEAPT-1A**  
 PROPOSED CONFIRMATION LOCATIONS  
 BEACON POINT & 1 BEACON POINT ROAD  
 RAYMARK SUPERFUND SITE  
 STRATFORD, CONNECTICUT

PREPARED BY: JTB	CHECKED BY: AR
PROJECT NO. 95700.00	DATE: MAY 2021



## OU6 REMEDIATION TRACKING TABLE

OU6 Parcel or Area	Location	Excavation Dates	Est. Volume (cy)	Actual Vol (cy)	# of truck trips?	Notes	
Glyne Manufacturing	380 East Main	Sept 16 -17, 2020	40	51.70	4	ELUR needed	
Karate Studio	190 Ferry Boulevard	Dec 2 - 10, 2020	100	87.31	10	ELUR needed	
Liquor Store	200 Ferry Boulevard	Dec 2 - 10, 2020	500	481.83	64	ELUR needed	
DOT ROW along 190/200 Ferry Blvd	190/200 Ferry Boulevard ROW	Dec 2 - 10, 2020	N/A	109.30	11	ELUR needed	
DOT Exit 33	Barnum Ave	Jan 19 – 20, 2021	420	345.57	19	DOT via Haul Road	
Ashcroft (front), Dry Cleaner and Hair Salon	250, 304 and 340 East Main Street	Feb 16 – April 19, 2021	5,000	2,785.3	251	ELUR needed	
			PHC -750	794.60	60	To Emelle, AI	
302/306 East Main Street	Same	Sept 16 - 18, 2021	300	127	9	ELUR needed	
Ashcroft Rear (Volumes as of Sept 22)	250 East Main Street	June 9 <sup>th</sup> to ???	~8,500	7,863	635	ELUR needed	
			PHC – ~500	377	35	To FTS/bind lead	
DOT ROW (Volumes as of Sept 22)	Ferry Blvd and East Broadway	Sept 20 to ???	600	50	4		
<b>TOTALS TO DATE =</b>			<b>Non-PHC</b>		<b>11,901.01</b>	<b>1,007</b>	
			<b>PHC</b>		<b>1,171.60</b>	<b>95</b>	

PHC volumes in RED font



# OU4 Updates



# OU4 Ballfield Work Completed or Ongoing Since August



<https://www.ipcamlive.com/5fc7c13309700>

- Approximately 12,000 CY consolidated, compacted and covered
- Posi-Shell cover applied on all previously imported Raymark Waste at OU4 Ballfield
- Material handling tent structure is complete and in use
- OU4 site and cap 95% draft design due this week
- Stormwater control system design complete
- 5 perimeter air monitors at OU4 are operating daily



# OU4 Ballfield Updates



- 3-D concept based on previous design
- Site design accommodates future use by the Town
- 200' x 300' building pad for future development. Will accommodate a variety of options.
- Access from Frog Pond Lane and Longbrook Ave via Haul Road
- Site stormwater will be collected and carried via new conveyance system and pumpstation



# Air Monitoring Updates



# OU4 - Air Monitoring Results

- Since 8/25/21 public meeting Daily Average Dust = 0.004 to 0.011 mg/m<sup>3</sup>
- No exceedances of the OU4 Dust Action Level criteria (0.014 mg/m<sup>3</sup>)
- All five dust meters and sample collection systems in operation
- One personnel chemical sample collection system
- No exceedances of chemical health and safety criteria in fixed monitoring stations or on personnel
- Posting Weekly Air Monitoring, Chemical Data and Vibration Monitoring Reports on Town Raymark website



# OU6 - Air Monitoring Results

- Soil excavation and Restoration at 250 East Main Street Rear, 302/360 East Main and Ferry Blvd (East Broadway-Ferry Blvd intersection)
  - Daily Average Dust Measurements 0.000 to 0.010 mg/m<sup>3</sup>
  - No exceedances of the OU6 Dust Action Level criteria (0.019 mg/m<sup>3</sup>)
  - Two dust meters and sample collection systems in operation
  - One personnel chemical sample collection system
  - No exceedances of chemical health and safety criteria
  - Posting Weekly Air Monitoring Reports, Chemical Data, and Vibration Monitoring Reports on Town Website
- Perimeter Air Monitoring Updates - OU4/ OU6 Restoration
- All imported clean soil tested every 500-1000 cy to verify meets CT Residential Soil Criteria
  - Only during site restoration Dust Action Level 0.150 mg/m<sup>3</sup>





# Questions?

- Be respectful of time so everyone has a chance to speak
- We will monitor the chat box for questions
- Please speak one at a time.



# Thank you for joining!

- Visit [townofstratford.com/Raymark](https://townofstratford.com/Raymark) for updates, meeting dates, meeting recordings and slides
- Email Alivia at: [acoleman@townofstratford.com](mailto:acoleman@townofstratford.com) with further questions, feedback or to sign up for email distribution list.
- Next meeting will be November 24, 2021