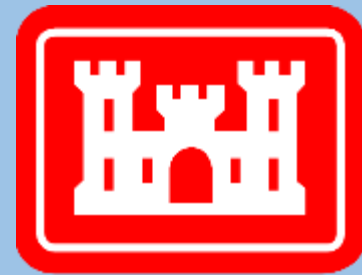


## Community Advisory Group

# Raymark Industries, Inc. Superfund Site Stratford, CT

Jim DiLorenzo, EPA  
Mike Looney, USACE  
Dave Heislein, USACE

August 25, 2021



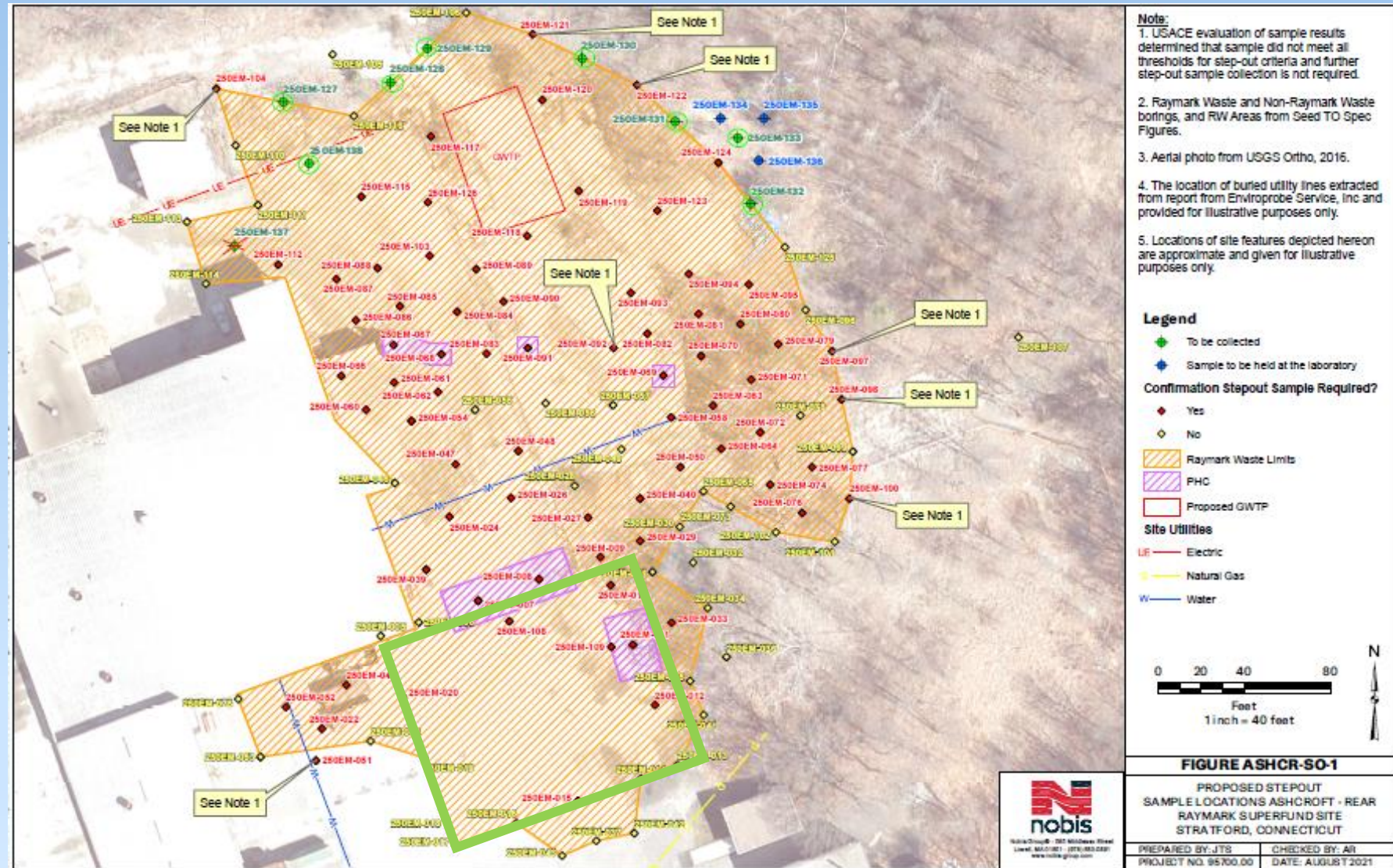
**US Army Corps  
of Engineers®**

# AGENDA

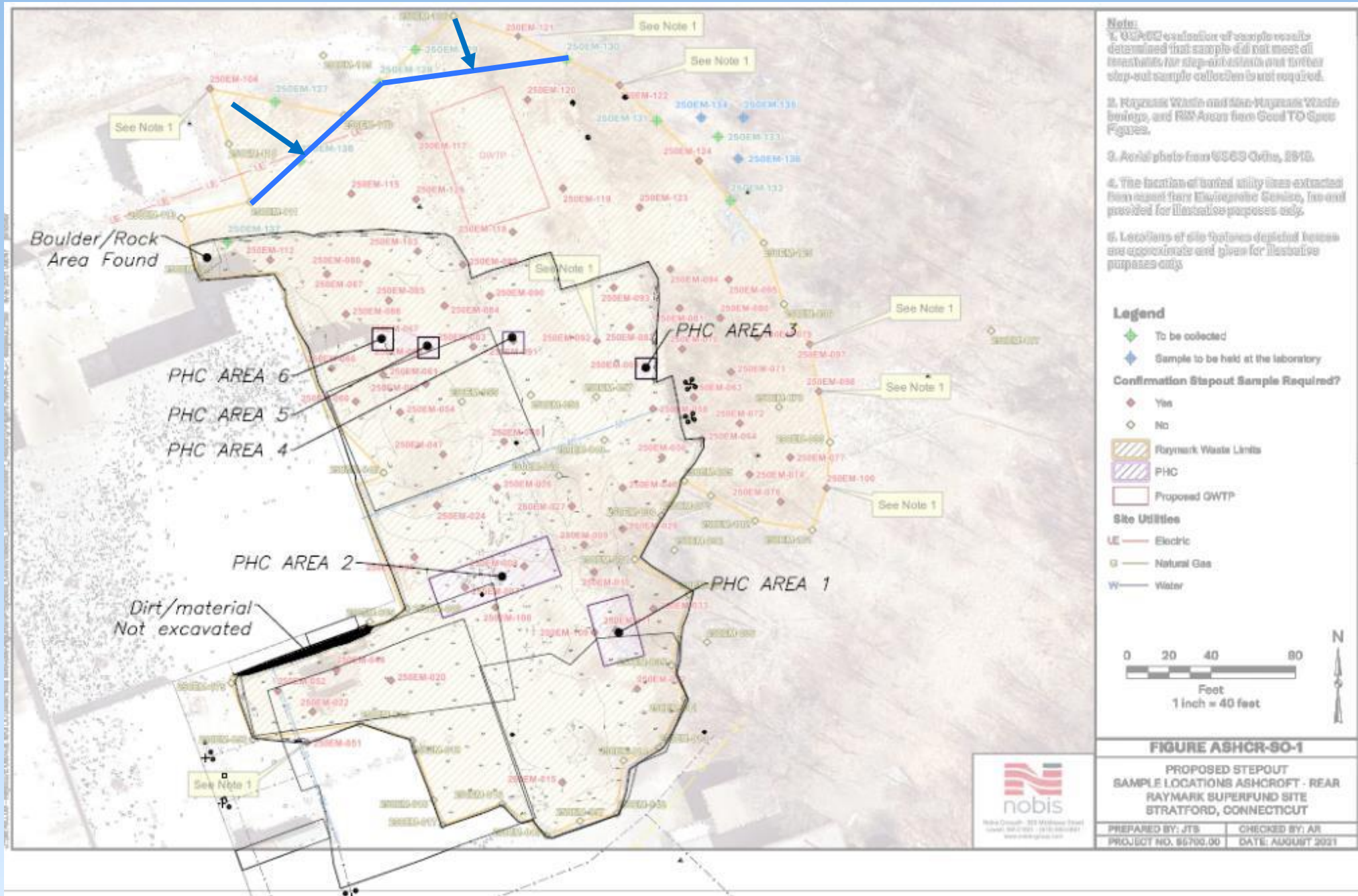
- INTRODUCTIONS AND MEETING RULES
- ONGOING REMOVAL AT ASHCROFT REAR
- OPERABLE UNIT 6 PLANNED SITES
- RAYBESTOS MEMORIAL FIELD (OU4)
- STORMWATER CONVEYANCE SYSTEM

# Ashcroft Rear

- Excavation began June 9
- ~~End of August?~~
- Mid-September
- Current volume estimate = 8,500yds
- Original = 1,500yds
- PHC waste found (380 yds)
- High water table







Black Line =  
remediated to  
date

Orange Line  
= extent to  
be  
remediated

Blue Line =  
anticipated  
northern  
boundary

Red Line =  
Water  
Treatment  
Plant

# Ashcroft Rear Starting Point





# Ashcroft Rear Behind Building



Ashcroft  
Rear  
Looking  
Northeast





# Ashcroft Rear Near Side Loading Dock





# Shallow Groundwater





# Ashcroft Rear Frac Tank and Treatment System





# Ashcroft Rear Water Treatment System Secondary Containment



Ashcroft  
Rear  
Loading  
“Wetter”  
RW





Ashcroft  
Rear  
Loading  
“Dryer”  
RW





# Ashcroft Rear Covering Load





# Loaded and Leaving Ashcroft Rear

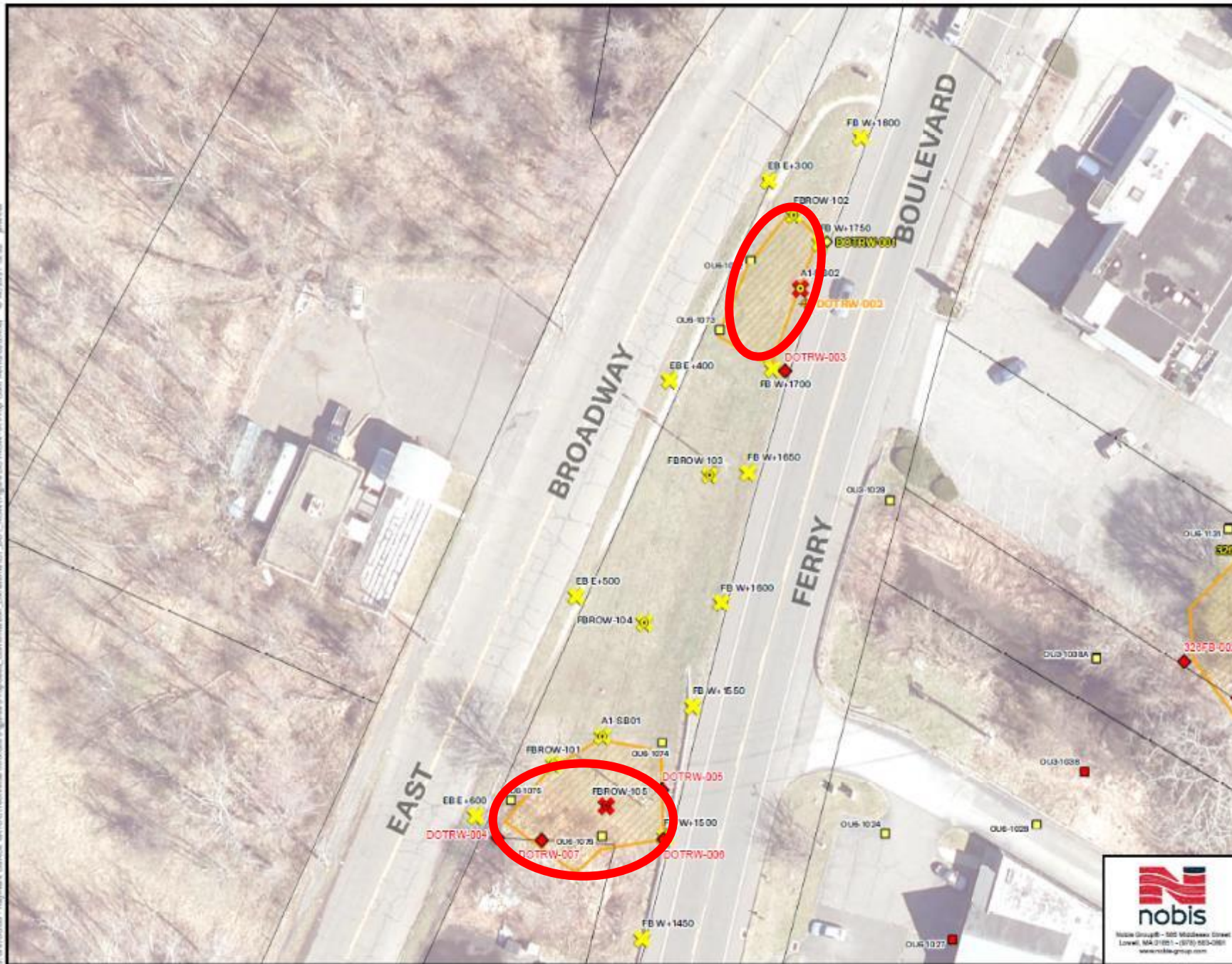


# OU6 Planned Sites









**Note:**  
 Raymark Waste and Non-Raymark Waste borings, and RW Areas from the Remedial Design Drawings and Pre-Design Investigation.

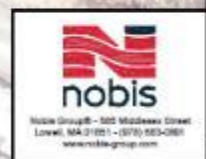
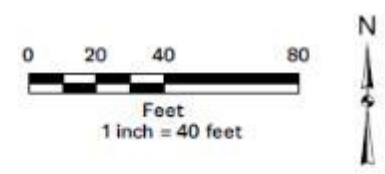
Property boundaries are derived from the Remedial Design Drawings.

Historical Samples 0-4' include samples collected from the following intervals: 0-4' bgs, 1-4' bgs, 2-4' bgs, 1-3' bgs, 2-3' bgs, and 3-4' bgs.

Historical Samples 0-2' include samples collected from less than or equal to 2' bgs.

Raymark Waste designation in historical samples are based on the Raymark Waste Criteria.

- Legend**
- Post-Construction Confirmation Sample
  - Confirmation Stepout Sample Required?**
    - Yes
    - No
  - AECOM PDI Samples**
    - Raymark Waste
    - Non-Raymark Waste
  - Historic Samples 0-4'**
    - Raymark Waste
    - Non-Raymark Waste
  - Historic Samples 0-2'**
    - Raymark Waste
    - Non-Raymark Waste
  - Approx. Survey Boundaries
  - Raymark Waste Limits



**FIGURE DOTROW-1A**

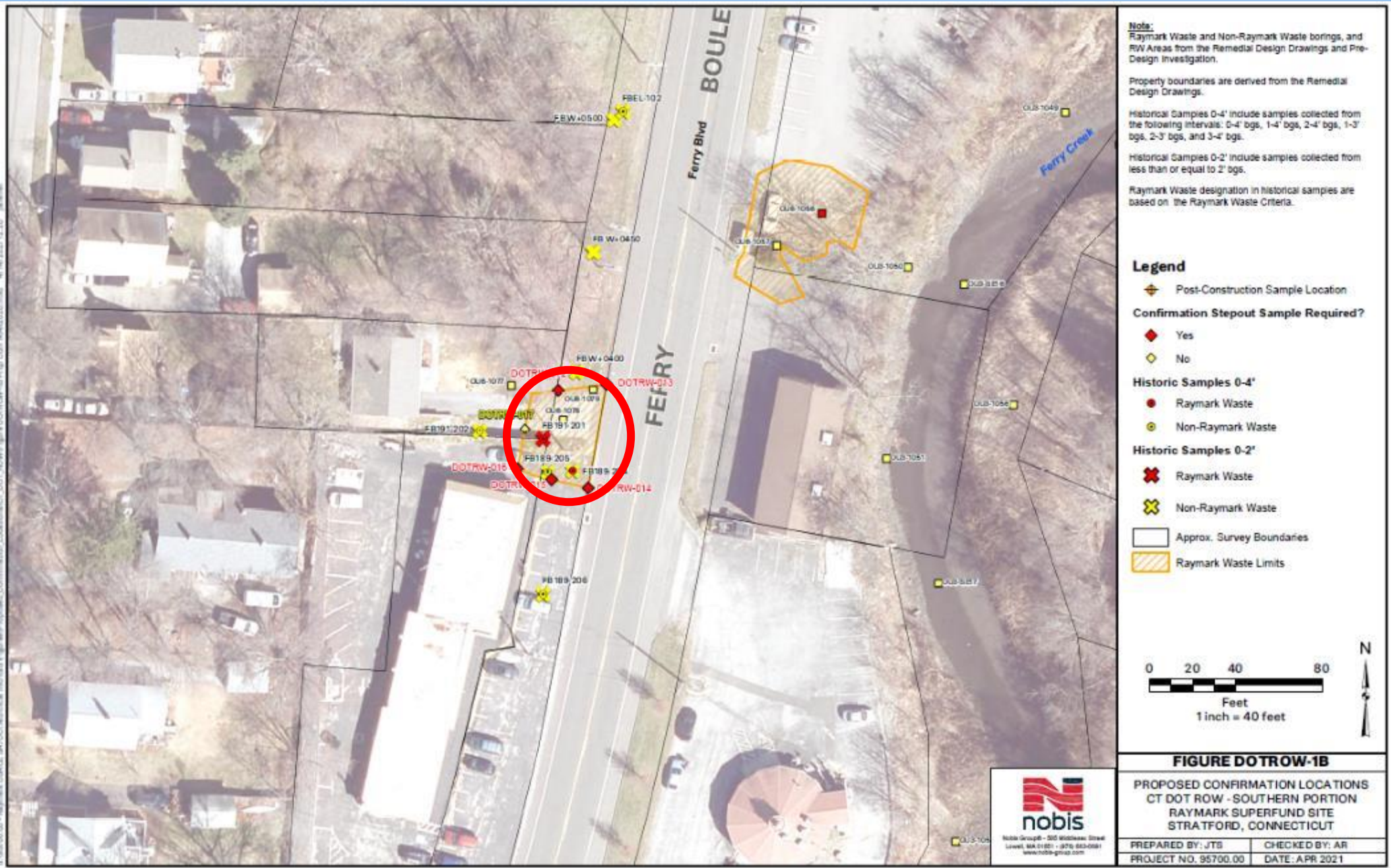
PROPOSED CONFIRMATION LOCATIONS  
 CT DOT ROW - NORTHERN PORTION  
 RAYMARK SUPERFUND SITE  
 STRATFORD, CONNECTICUT

PREPARED BY: JTS	CHECKED BY: AR
PROJECT NO. 95700.00	DATE: APR 2021

# DOT ROW



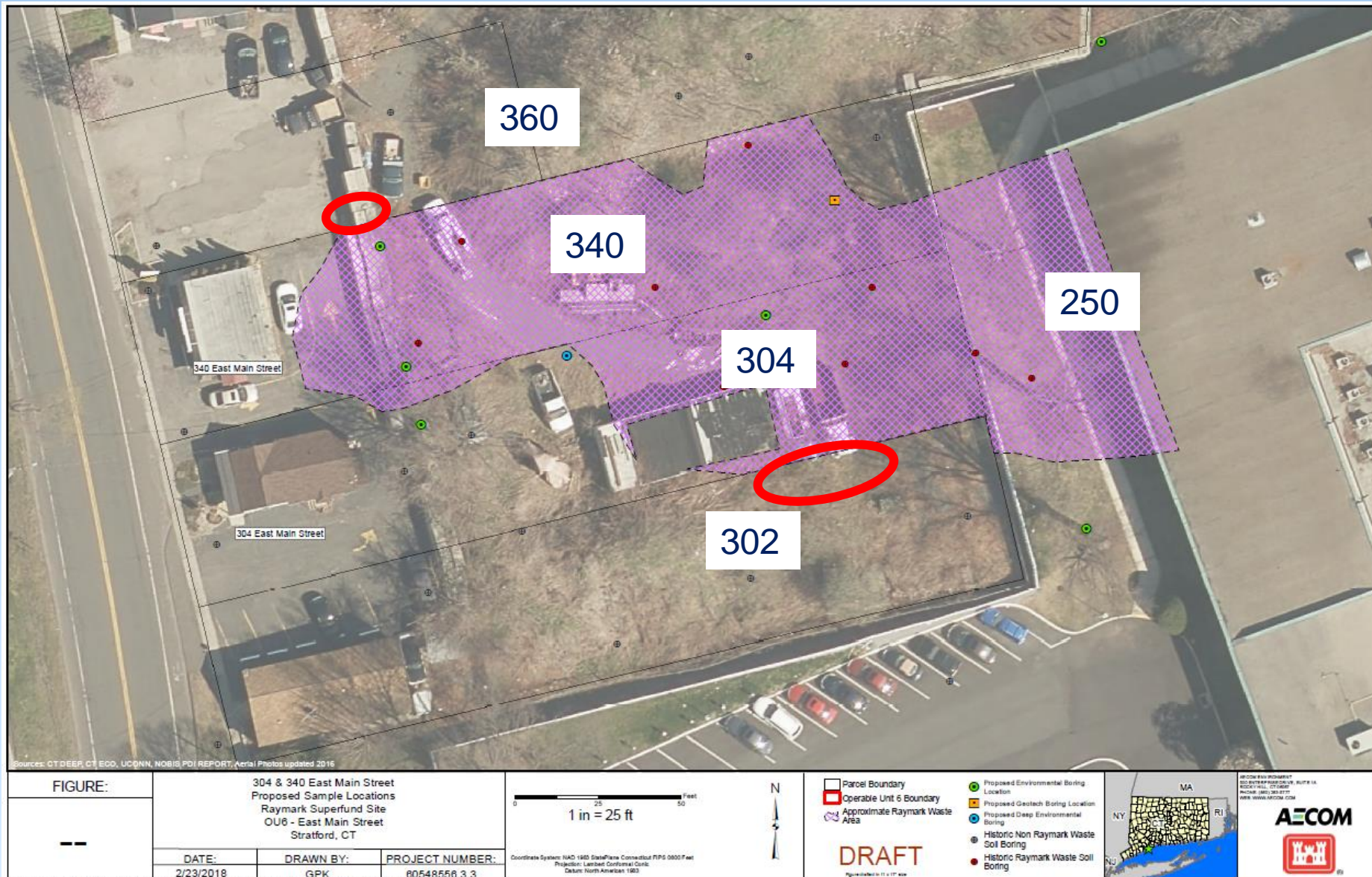
# 171/191 Ferry Blvd



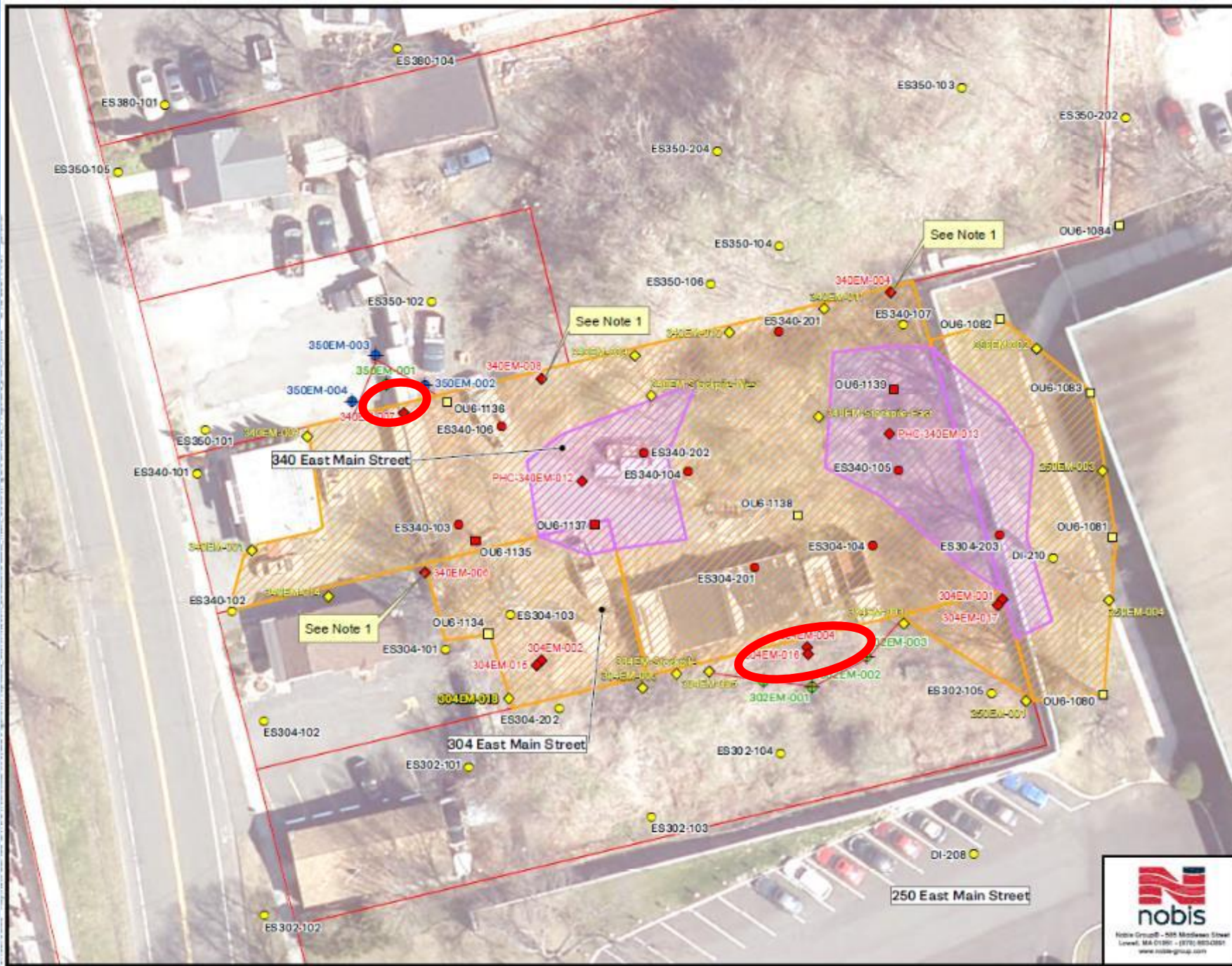


# Raymark Waste on 302/360 East Main Street

(App. 235yds - 75yds @ 302 and 160yds @ 360 = about 15 trucks)



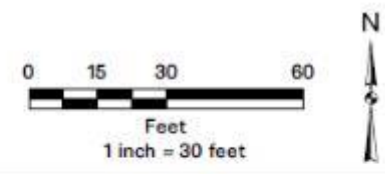




- Note:**
1. USACE evaluation of sample results determined that sample did not meet all thresholds for step-out criteria and further step-out sample collection is not required.
  2. Raymark waste limits obtained from the contract drawings.
  3. Historical samples presented represent only samples collected from the following zones: 0-4' bgs, 1-4' bgs, 2-4' bgs, 1-3' bgs, 2-3' bgs, and 3-4' bgs.
  4. Historical samples are compared against 90% of the initial Raymark Waste Criteria to account for analytical variability.

**Legend**

- ◆ Sample to be held at the laboratory
  - ◆ To be collected
- Confirmation Stepout Sample Required?**
- ◆ Yes
  - ◆ No
- AECOM PDI Samples**
- Raymark Waste
  - Non-Raymark Waste
- Historic Samples**
- Raymark Waste
  - Non-Raymark Waste
- PDI Property Boundaries  
 PHC Waste Limits  
 Raymark Waste Limits

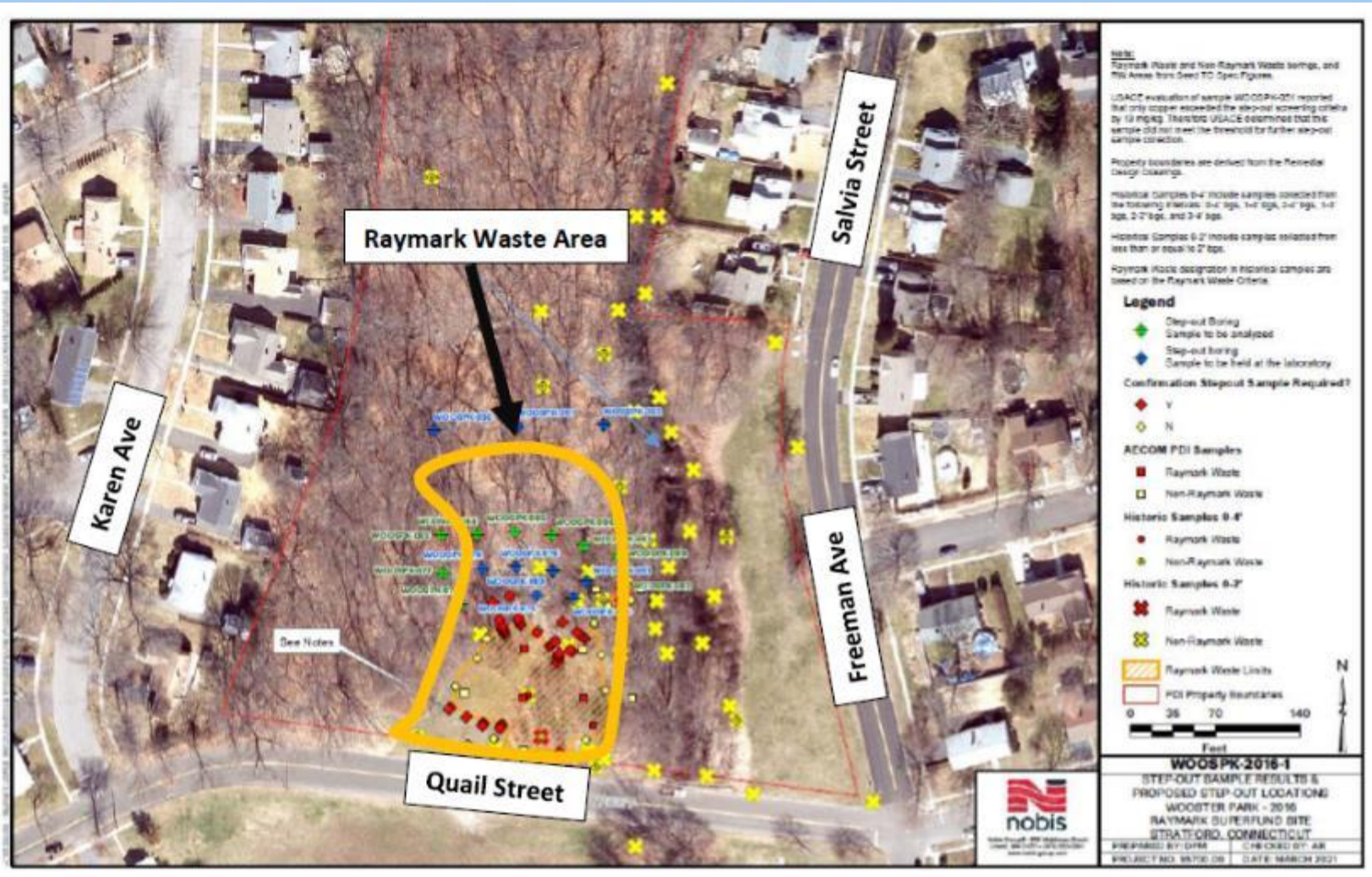


**FIGURE EMAIN-2**  
 PROPOSED POST-CONSTRUCTION  
 SAMPLE LOCATIONS 250, 304,  
 340 EAST MAIN STREET  
 RAYMARK SUPERFUND SITE  
 STRATFORD, CONNECTICUT

PREPARED BY: JTS	CHECKED BY: AR
PROJECT NO. 95700.00	DATE: MAY 2021

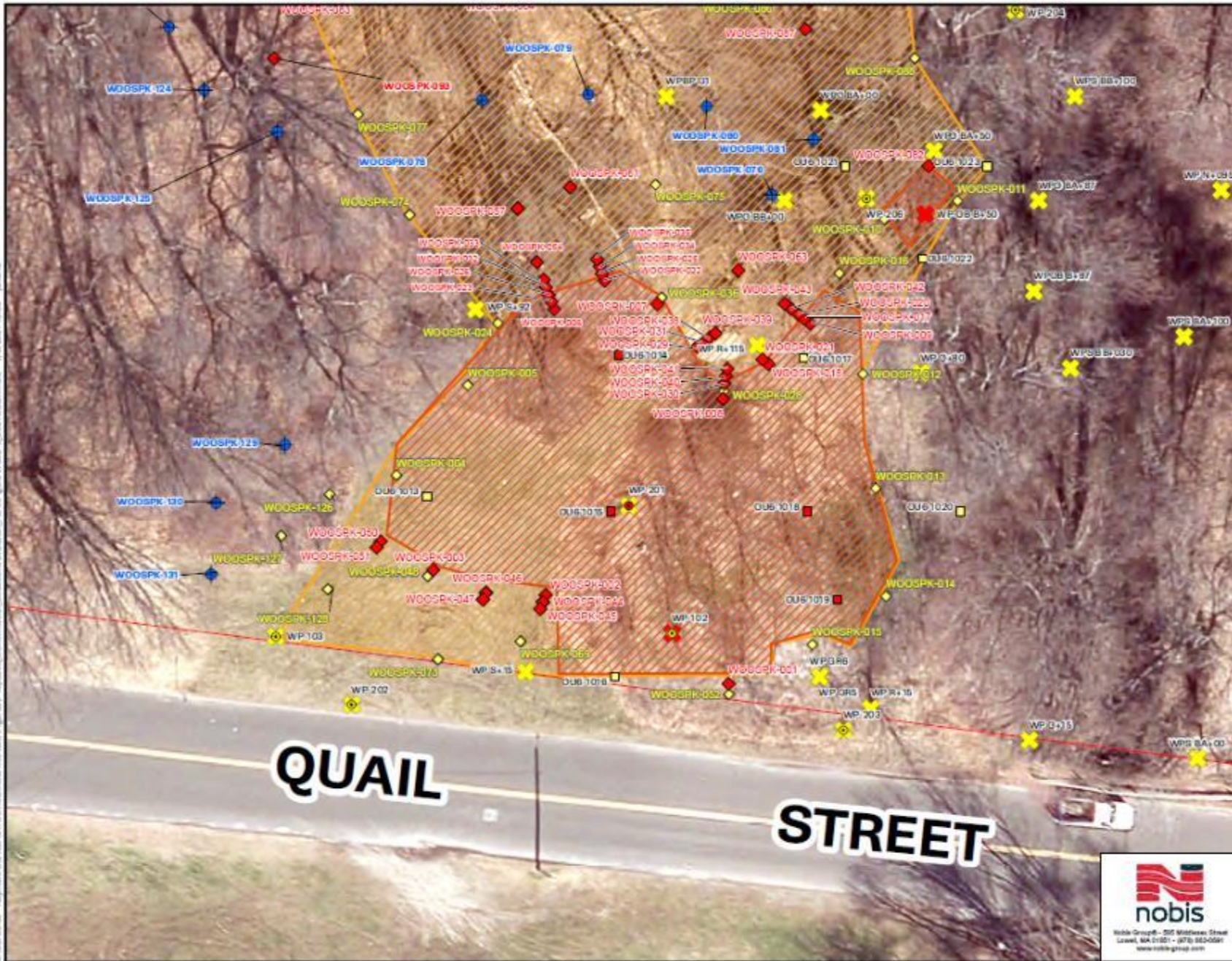


# Wooster Park



- Design Estimate = 1,500yds
- Current estimate = about 5,000yds (~350 trucks)
- About 500yds PHC (35)
- Start App. Oct. 1, 2021
- About 12 weeks to complete
- First neighborhood public meeting held on May 12<sup>th</sup>
- Second meeting to be held in September

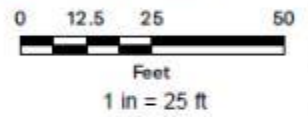




- Note:**
- USACE evaluation of sample results determined that sample did not meet all thresholds for step-out criteria and further step-out sample collection is not required.
  - Raymark Waste and Non-Raymark Waste borings, and RW Areas from Seed TO Spec Figures.
  - Property boundaries are derived from the Remedial Design Drawings.
  - Historical Samples 0-4' include samples collected from the following intervals: 0-4' bgs, 1-4' bgs, 2-4' bgs, 1-3' bgs, 2-3' bgs, and 3-4' bgs.
  - Raymark Waste designation in historical samples are based on the Raymark Waste Criteria.

**Legend**

- Step-out Boring Sample to be analyzed
- Step-out boring Sample to be held at the
- Confirmation Stepout Sample Required?**
  - Yes
  - No
- AECOM PDI Samples**
  - Raymark Waste
  - Non-Raymark Fill
- Historic Samples 0-4'**
  - Raymark Waste
  - Non-Raymark Fill
- Historic Samples 0-2'**
  - Raymark Waste
  - Non-Raymark Fill
- Original Extent
- Updated Extent
- PDI Property Boundaries

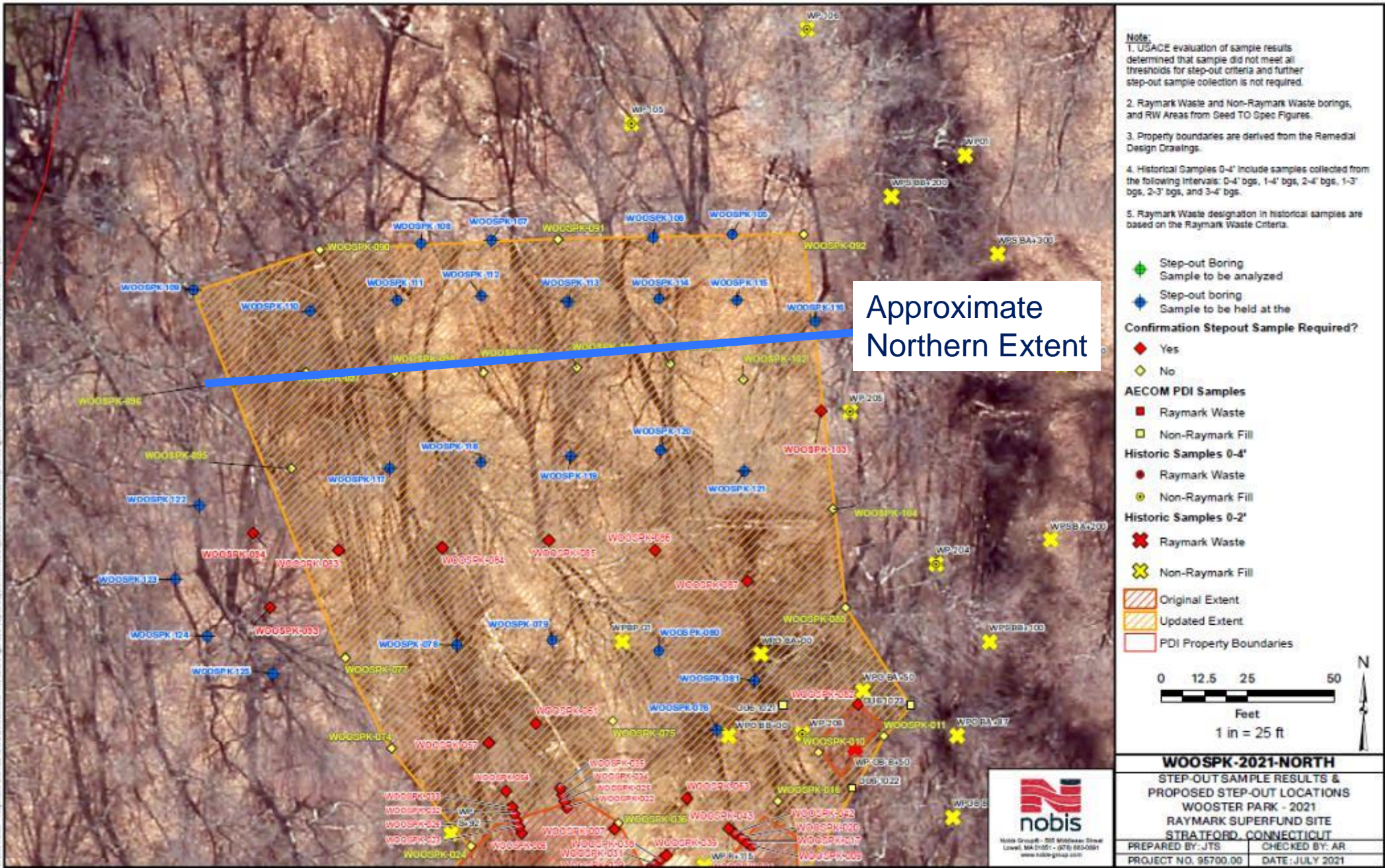


<b>W00SPK-2021-SOUTH</b>	
STEP-OUT SAMPLE RESULTS & PROPOSED STEP-OUT LOCATIONS	
WOOSTER PARK - 2021	
RAYMARK SUPERFUND SITE	
STRATFORD, CONNECTICUT	
PREPARED BY: JTS	CHECKED BY: AR
PROJECT NO. 95700.00	DATE: JUNE 2021

# Wooster Park South

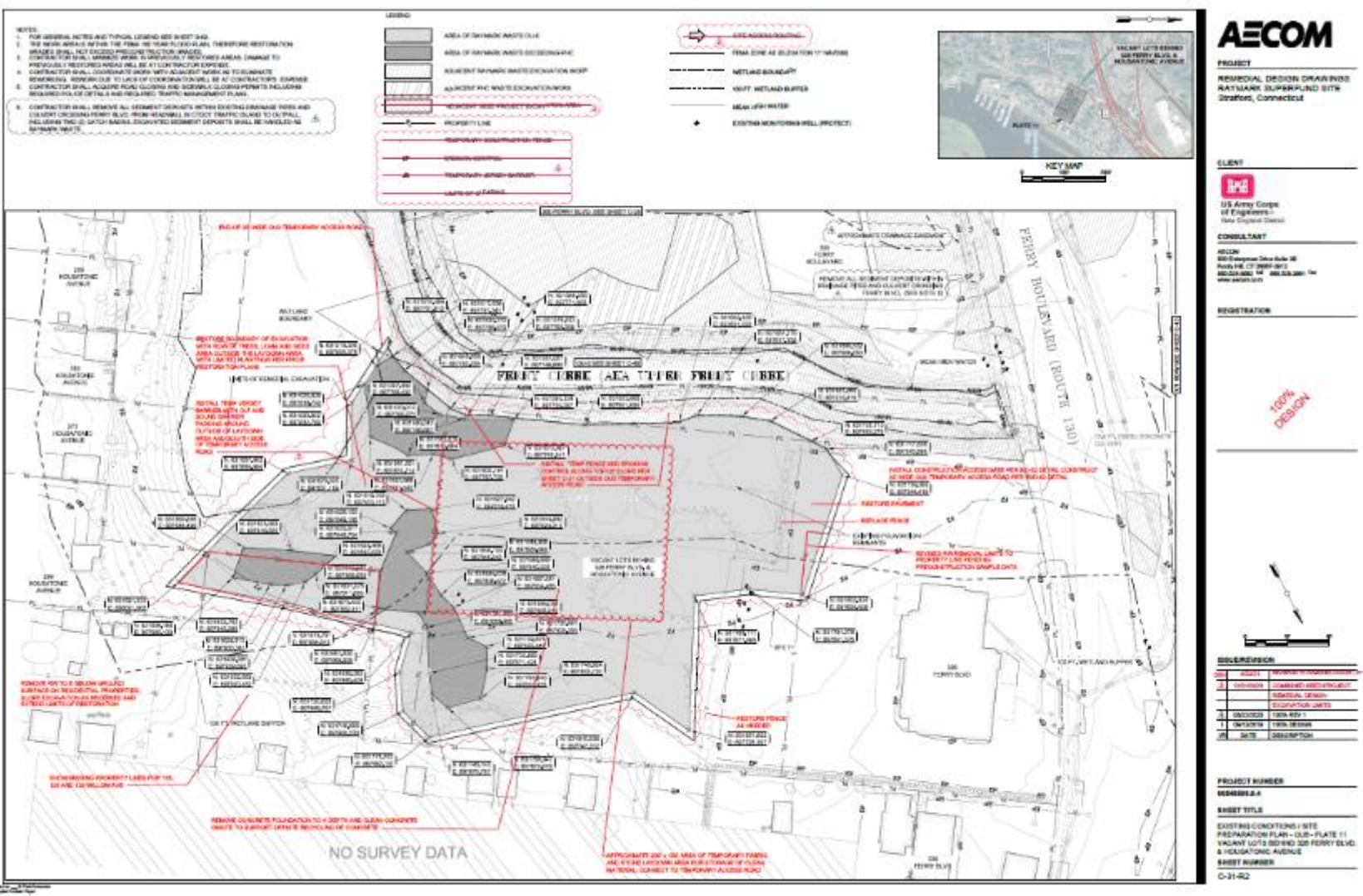


# Wooster Park North





# Vacant Lot Behind Blue Goose



- App. 10,000yds (500 trucks)
- Original estimate 4,400yds
  
- App. 1,400yds PHC (90 trucks)
- Original estimate 660yds PHC
  
- Tentative start Jan. 2022
  
- About 16 weeks to complete
  
- Will host a public meeting for the residents of Willow and a portion of Housatonic Ave in December



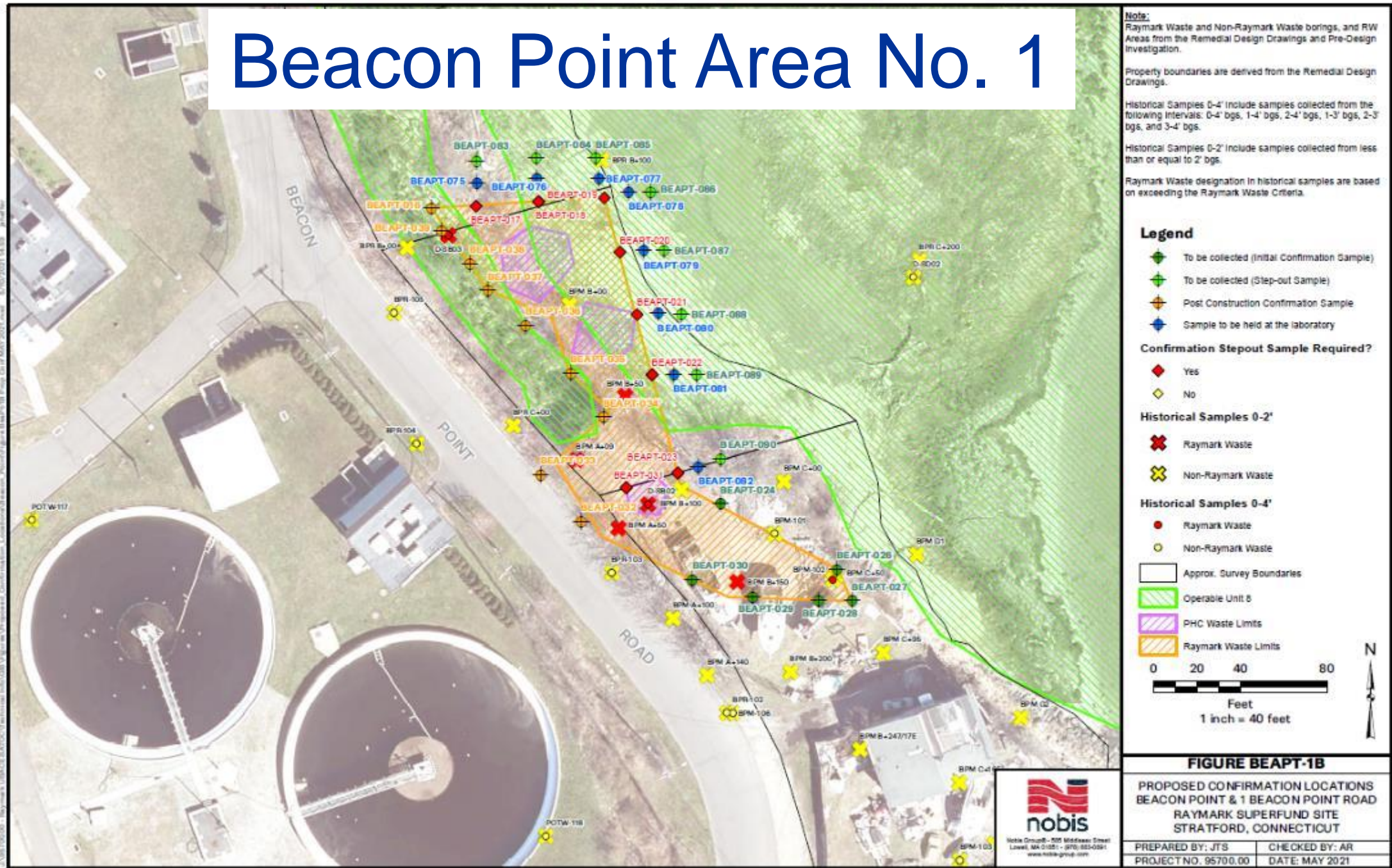
# Beacon Point



- 3 RW areas
- 3,250yds (210 trucks)
- Original est. 2,400yds
- 250 yds PHC waste (~20 trucks)
- Still chasing area 2
- App. Spring 2022
- About 8 weeks to complete

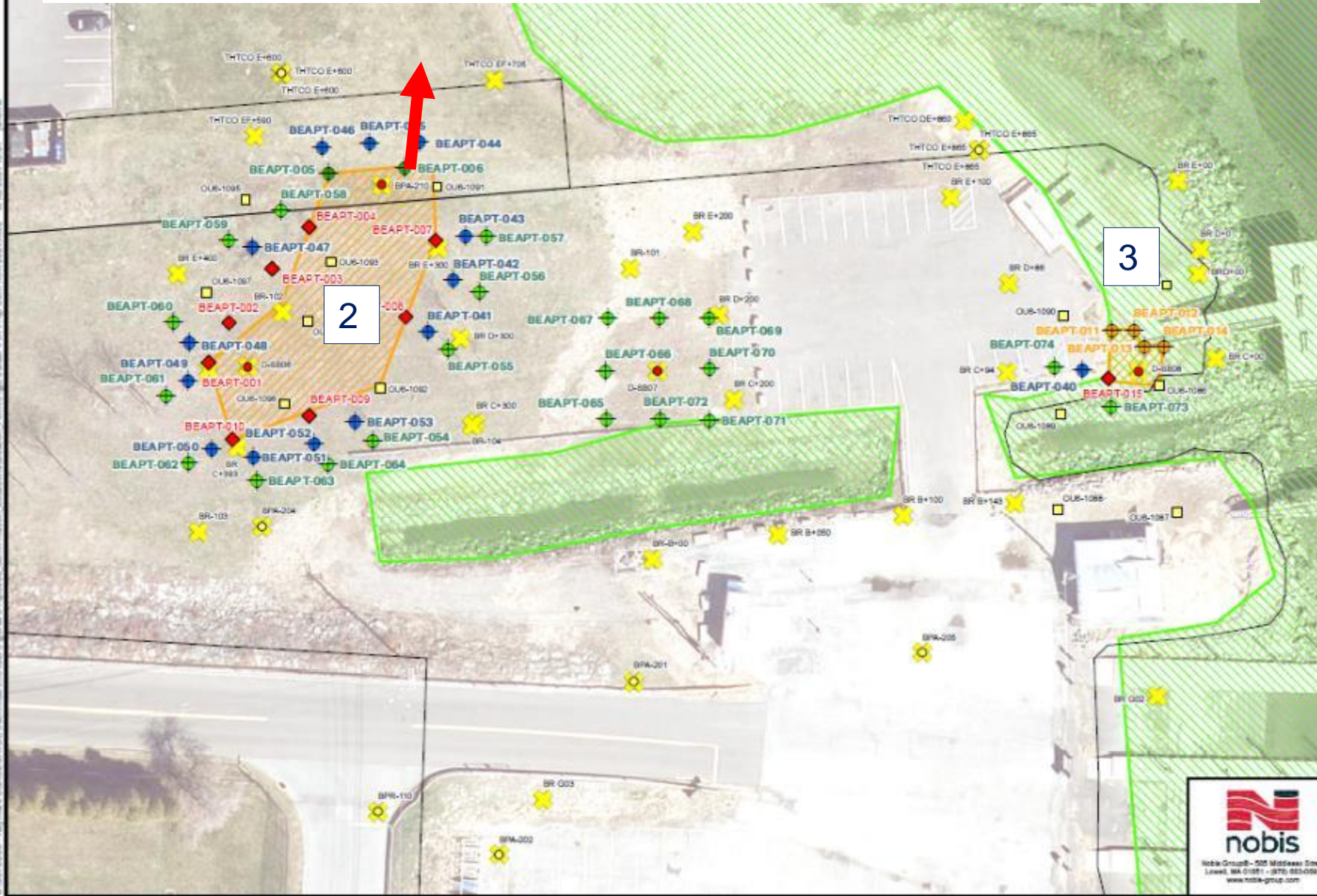


# Beacon Point Area No. 1





# Beacon Point Areas 2 and 3



**Notes:**  
 Raymark Waste and Non-Raymark Waste borings, and RW Areas from the Remedial Design Drawings and Pre-Design Investigation.  
 Property boundaries are derived from the Remedial Design Drawings.  
 Historical Samples 0-4' include samples collected from the following intervals: 0-4' bgs, 1-4' bgs, 2-4' bgs, 1-3' bgs, 2-3' bgs, and 3-4' bgs.  
 Historical Samples 0-2' include samples collected from less than or equal to 2' bgs.  
 Raymark Waste designation in historical samples are based on exceeding the Raymark Waste Criteria.

**Legend**

- ◆ To be collected (Initial Confirmation Sample)
- ◇ To be collected (Step-out Sample)
- ◆ Post Construction Confirmation Sample
- ◆ Sample to be held at the laboratory

**Confirmation Stepout Sample Required?**

- ◆ Yes
- ◇ No

**Historical Samples 0-4'**

- Raymark Waste
- Non-Raymark Waste

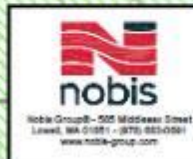
**Historical Samples 0-2'**

- ✖ Raymark Waste
- ✖ Non-Raymark Waste

- Approx. Survey Boundaries
- Raymark Waste Limits
- Operable Unit 8

0 20 40 80  
 Feet  
 1 inch = 40 feet

N



**FIGURE BEAPT-1A**  
 PROPOSED CONFIRMATION LOCATIONS  
 BEACON POINT & 1 BEACON POINT ROAD  
 RAYMARK SUPERFUND SITE  
 STRATFORD, CONNECTICUT

PREPARED BY: JTB	CHECKED BY: AR
PROJECT NO. 95700.00	DATE: MAY 2021



# OU6 Tracking Table

OU6 Parcel or Area	Location	Excavation Dates	Est. Volume (cy)	Actual Vol (cy)	# of truck trips?	Notes
<b>Glyne Manufacturing</b>	380 East Main	Sept 16 -17, 2020	40	51.70	4	ELUR needed
<b>Karate Studio</b>	190 Ferry Boulevard	Dec 2 - 10, 2020	100	87.31	10	ELUR needed
<b>Liquor Store</b>	200 Ferry Boulevard	Dec 2 - 10, 2020	500	481.83	64	ELUR needed
<b>DOT ROW along 190/200 Ferry Blvd</b>	190/200 Ferry Boulevard ROW	Dec 2 - 10, 2020	N/A	109.30	11	ELUR needed
<b>DOT Exit 33</b>	Barnum Ave	Jan 19 – 20, 2021	420	345.57	19	DOT via Haul Road
<b>Ashcroft (front), Dry Cleaner and Hair Salon</b>	250, 304 and 340 East Main Street	Feb 16 – April 19, 2021	5,000	2,785.3	251	ELUR needed
			PHC -750	794.60	60	To Emelle, AI
<b>Ashcroft Rear</b> (Volumes as of Aug 18)	250 East Main Street	June 9 <sup>th</sup> to ???	~7,500	5,650	462	ELUR needed
			PHC – ~500	380	35	To FTS/bind lead
<b>TOTALS TO DATE =</b>		<b>Non-PHC</b>		<b>9,511.01</b>	<b>821</b>	
		<b>PHC</b>		<b>1,174.60</b>	<b>95</b>	





Exposed  
PHC Waste



# OU4 Ballfield Work Completed or Ongoing Since July



<https://www.ipcamlive.com/5fc7c13309700>

- Approximately 9,500 CY consolidated, compacted and covered.
- Posi-Shell cover applied on all previously imported Raymark Waste at OU4 Ballfield
- Material handling tent structure is complete and in use
- OU4 site and 65% cap design complete - final design expected late fall
- Stormwater control system design complete
- 5 perimeter air monitors at OU4 and 2 at Ashcroft rear are operating daily



# ENGINEERING CONTROLS

- Apply water, material always wet



9'

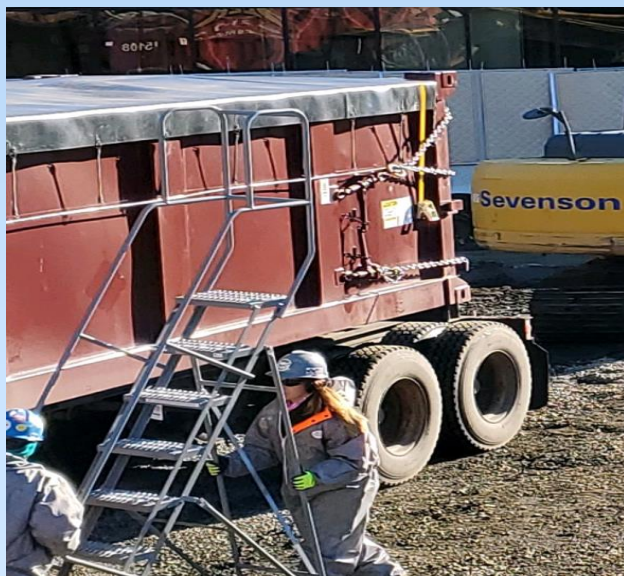
- Perimeter concrete barrier, steel fence, heavy duty sound blanket



- Vibration and Noise Monitoring



- Erosion Control



- Tightly sealed trucks / containers with gasketed gates



- Real time air monitoring



- Posi shell cover system



# ENGINEERING CONTROLS



- Targeted watering of material

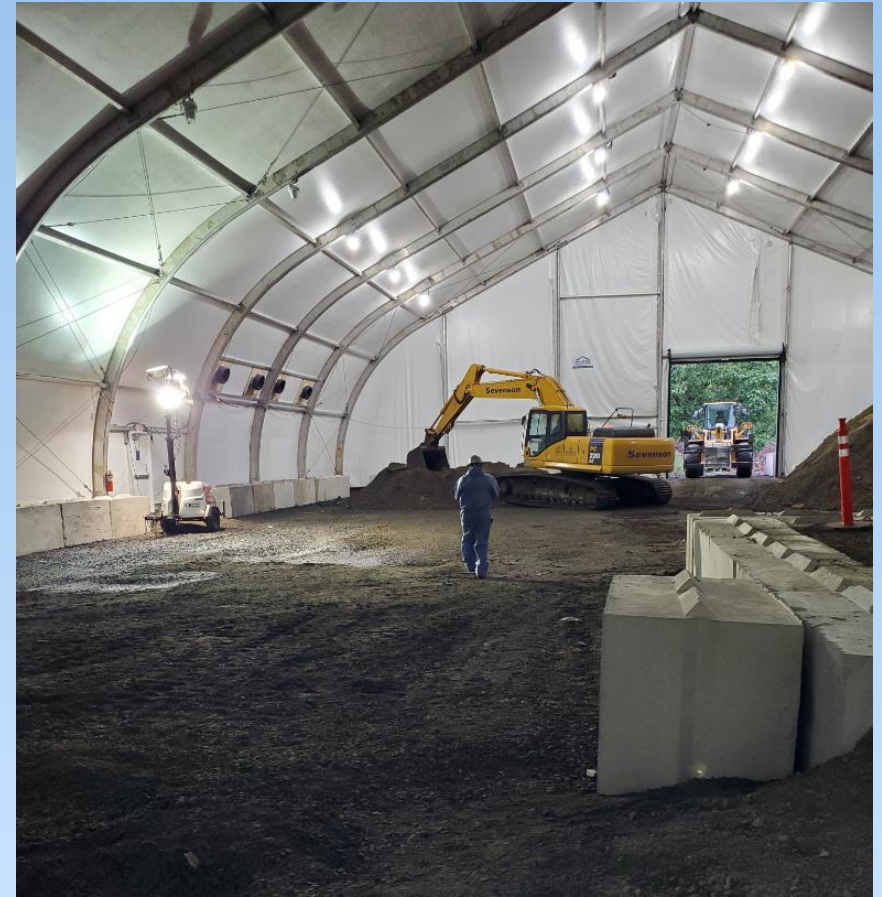


- Broad cover watering

- Apply water, material always wet when handling



# OU4 Containment Structure



- Material Handling Structure
- Approx. Dimensions (l x w x h) : 100' x 130' x 40'
- Closed system with air treatment
- Used primarily for material additives and dewatering



# OU4 Containment Structure



- Additional material handling, additives, drying agents
- MAECTITE additive to bind lead before offsite disposal
- Closed system, complete air change every 10 minutes
- Air scrubbed for contaminants from waste as well as equipment





# OU4 - Air Monitoring Results

- Since 6/30/21 public meeting Daily Average Dust = 0.004 to 0.013 mg/m<sup>3</sup>
- No exceedances of the OU4 Dust Action Level criteria (0.014 mg/m<sup>3</sup>)
- We had two days of weather service alerts for bad air days. This regional data is not site related, but we report these data to the Town. Proactive to reduce soil disturbance work those days and increased watering.
- All five dust meters and sample collection systems in operation
- One personnel chemical sample collection system
- No exceedances of chemical health and safety criteria
- Posting Weekly Air Monitoring, Chemical Data and Vibration Monitoring Reports on Town Raymark website





# OU6 - Air Monitoring Results

- Soil excavation and Site Restoration at 250 East Main Street Rear Property
- Daily Average Dust Measurements 0.000 to 0.010 mg/m<sup>3</sup>
- No exceedances of the OU6 Dust Action Level criteria (0.019 mg/m<sup>3</sup>)
- Two dust meters and sample collection systems in operation
- One personnel chemical sample collection system
- No exceedances of chemical health and safety criteria
- Posting Weekly Air Monitoring Reports, Chemical Data, and Vibration Monitoring Reports on Town Website



## Perimeter Air Monitoring Updates - OU4/ OU6 Restoration

- All imported clean soil tested every 500-1000 cy to verify meets CT Residential Soil Criteria
- Only during site restoration Dust Action Level raised to 0.150 mg/m<sup>3</sup>





# OU4 Stormwater System



# Stormwater System Upgrades





# New Pump Station

- 4 Axial Flow Pumps
- 200 CFS Capacity
- Operates during significant storm and high-water events
- Masonry Pumphouse

