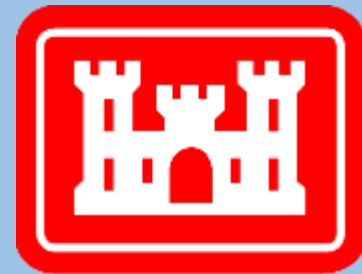


Community Advisory Group

Raymark Industries, Inc. Superfund Site Stratford, CT

Jim DiLorenzo, EPA
Mike Looney, USACE
Dave Heislein, USACE

June 30, 2021



**US Army Corps
of Engineers®**

AGENDA

- INTRODUCTIONS AND MEETING RULES
- COMPLETED OPERABLE UNIT 6 PROPERTIES
- ONGOING REMOVAL AT ASHCROFT REAR
- OPERABLE UNIT 6 PLANNED SITES
- OPERABLE UNIT 4 UPDATES
- AIR MONITORING

COMPLETED OPERABLE UNIT 6 PROPERTIES

380 E. Main Street (Glyne Manufacturing)

- First of the OU6 removals
- 2 days to excavate, September 16 & 17, 2020
- Estimated 40 cubic yards
- Actual 51.7 cubic yards
- 4 truck trips



190 Ferry Boulevard (Karate Studio)

- ROD identified RW only at 200 FB
- RW confirmed at 190 FB during PDI
- 8 days to excavate, December 2 to 10, 2020
- Estimated 500 cubic yards
- Actual 481.83 cubic yards
- 10 truck trips



200 Ferry Boulevard (Liquor Store)



- 8 days to excavate, December 2 to 10, 2020
- Estimated 100 cubic yards
- Actual 87.31 cubic yards
- 64 truck trips



250, 304 and 340 East Main Street (Ashcroft Front, Dog Groomer, Dry Cleaner and Hair Salon)

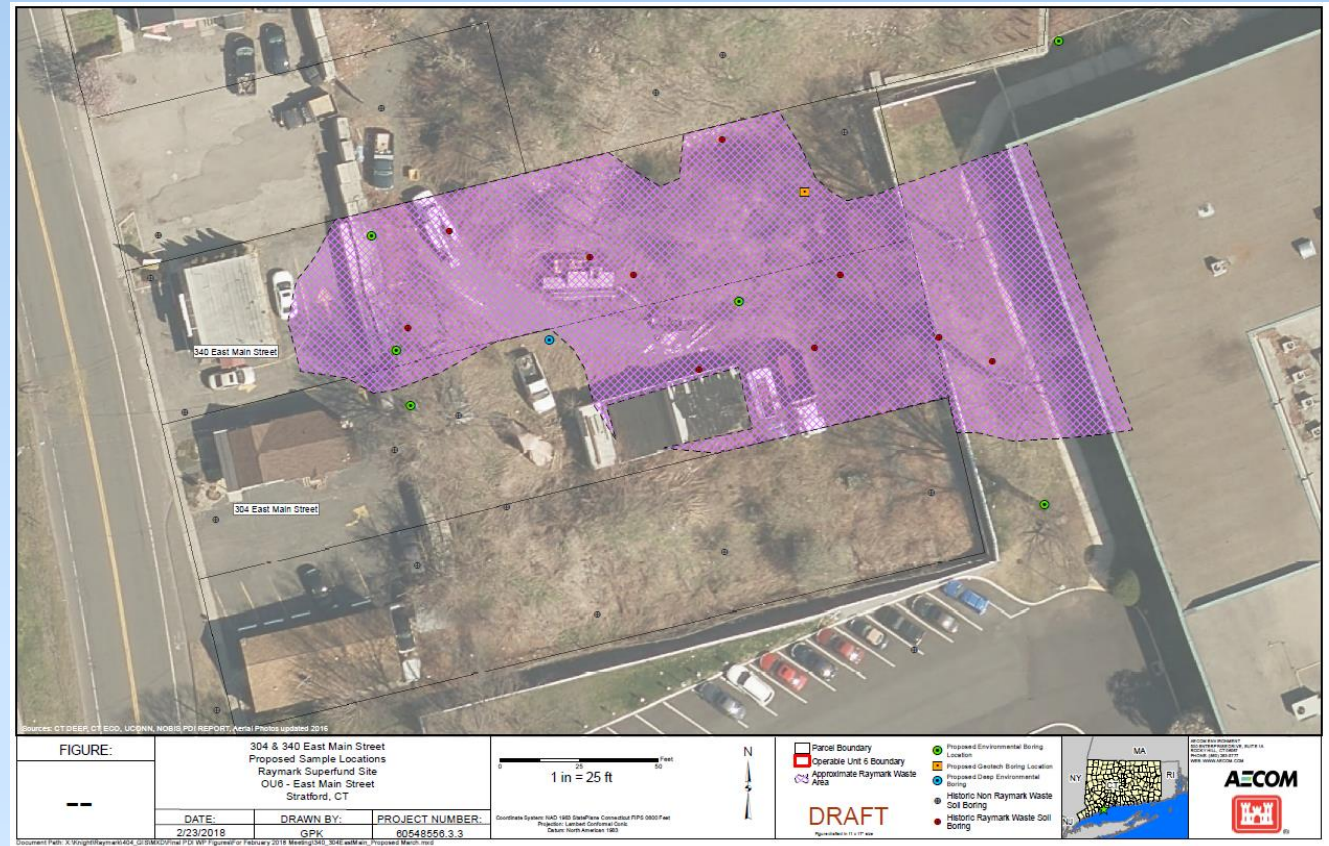


- 40 days to excavate, February 15 to April 19



- Estimated 5,000 yds
- Actual 2,928 yds
- 251 truck trips

- Est. 750 yds PHC
- Actual 794.60 yds PHC
- 60 truck trips PHC



OU6 Tracking Table

OU6 Parcel or Area	Location	Excavation Dates	Est. Volume (cy)	Actual Vol (cy)	# of truck trips?	Notes
Glyne Manufacturing	380 East Main	Sept 16 -17, 2020	40	51.70	4	ELUR needed
Karate Studio	190 Ferry Boulevard	Dec 2 - 10, 2020	100	87.31	10	ELUR needed
Liquor Store	200 Ferry Boulevard	Dec 2 - 10, 2020	500	481.83	64	ELUR needed
DOT Exit 33	Barnum Ave	Jan 19 – 20, 2021	420	345.57	19	DOT via Haul Road
Ashcroft (front), Dry Cleaner and Hair Salon	250, 304 and 340 East Main Street	Feb 15 – April 19, 2021	5,000	2,928	251	ELUR needed
			PHC -750	794.60	60	To Emelle, AI
Ashcroft Rear	250 East Main Street	June 9 th to ???	4,500++	550 to date	55 to date	
			PHC – unk?			
TOTALS TO DATE =		Non-PHC	6,060	4,444.41	403	
		PHC	750	794.60	60	



Exposed
PHC Waste

ASHCROFT REAR

Ashcroft Rear Starting Point



Ashcroft
Rear
Loading
“Dryer”
RW



Ashcroft Rear Covering Load



Ashcroft
Rear
Loading
“Wetter”
RW



Ashcroft Rear Frac Tank and Treatment System

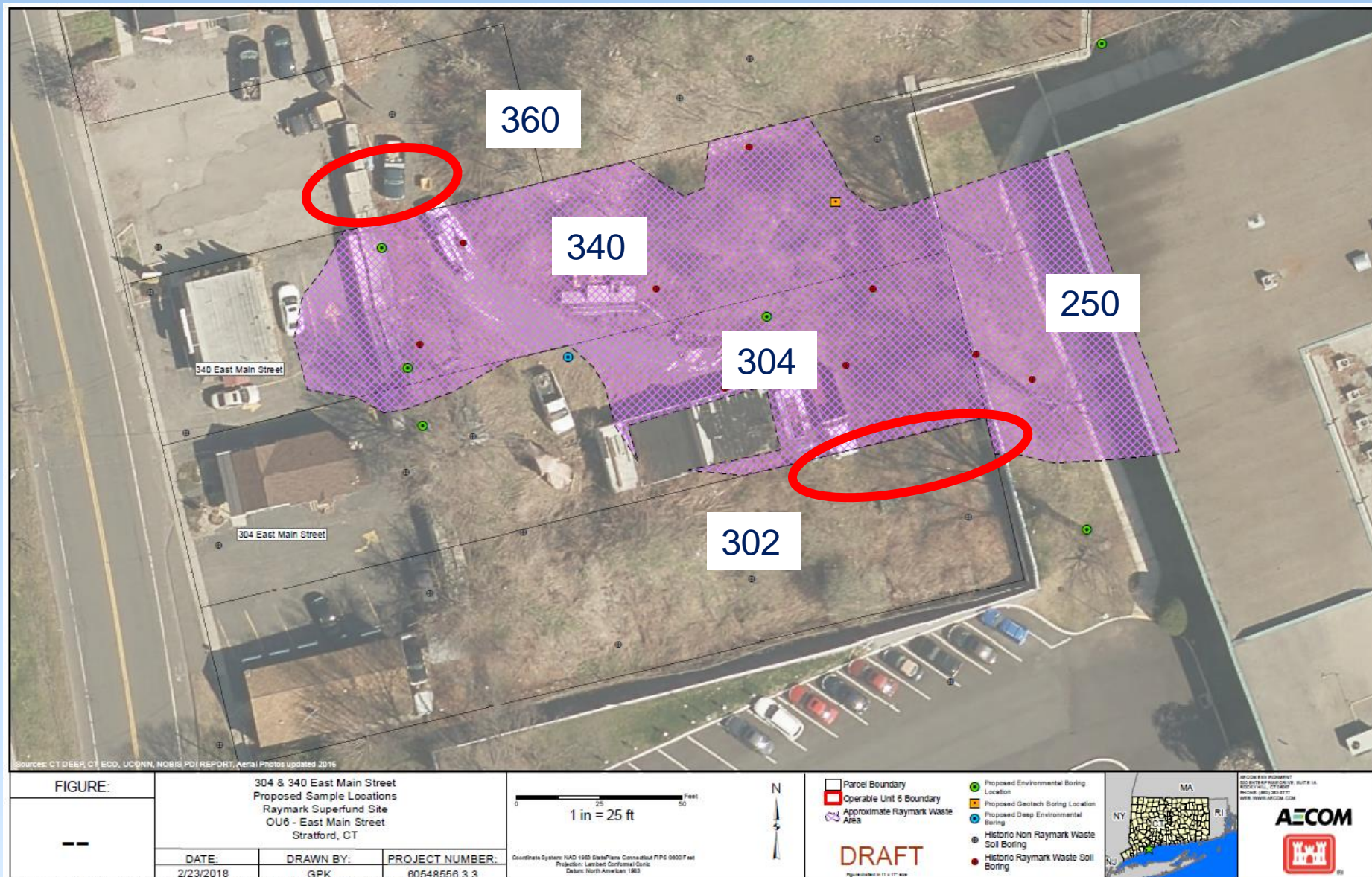


Ashcroft Rear Water Treatment System Secondary Containment



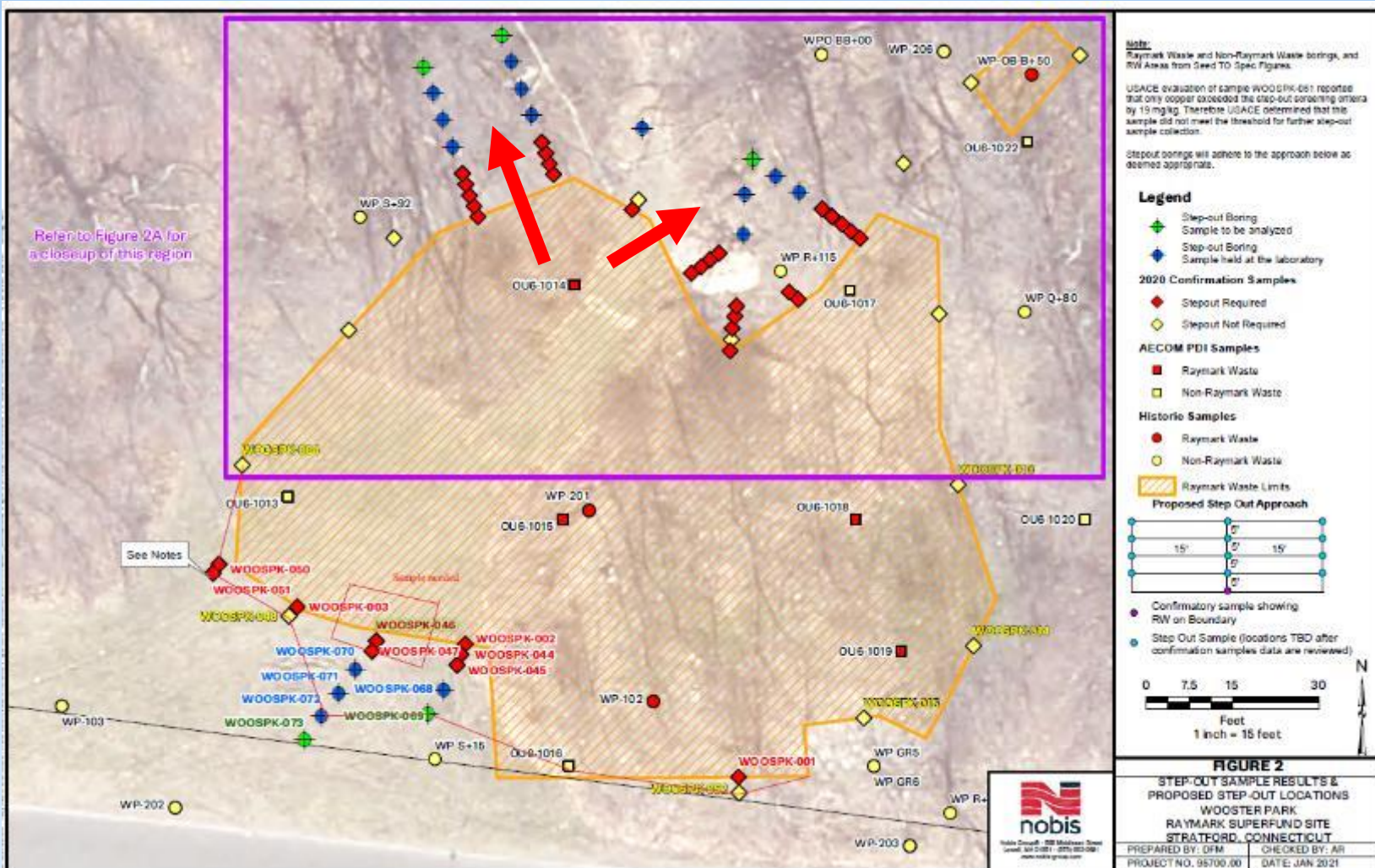
OU6 Planned Sites

Raymark Waste on 302/360 East Main Street

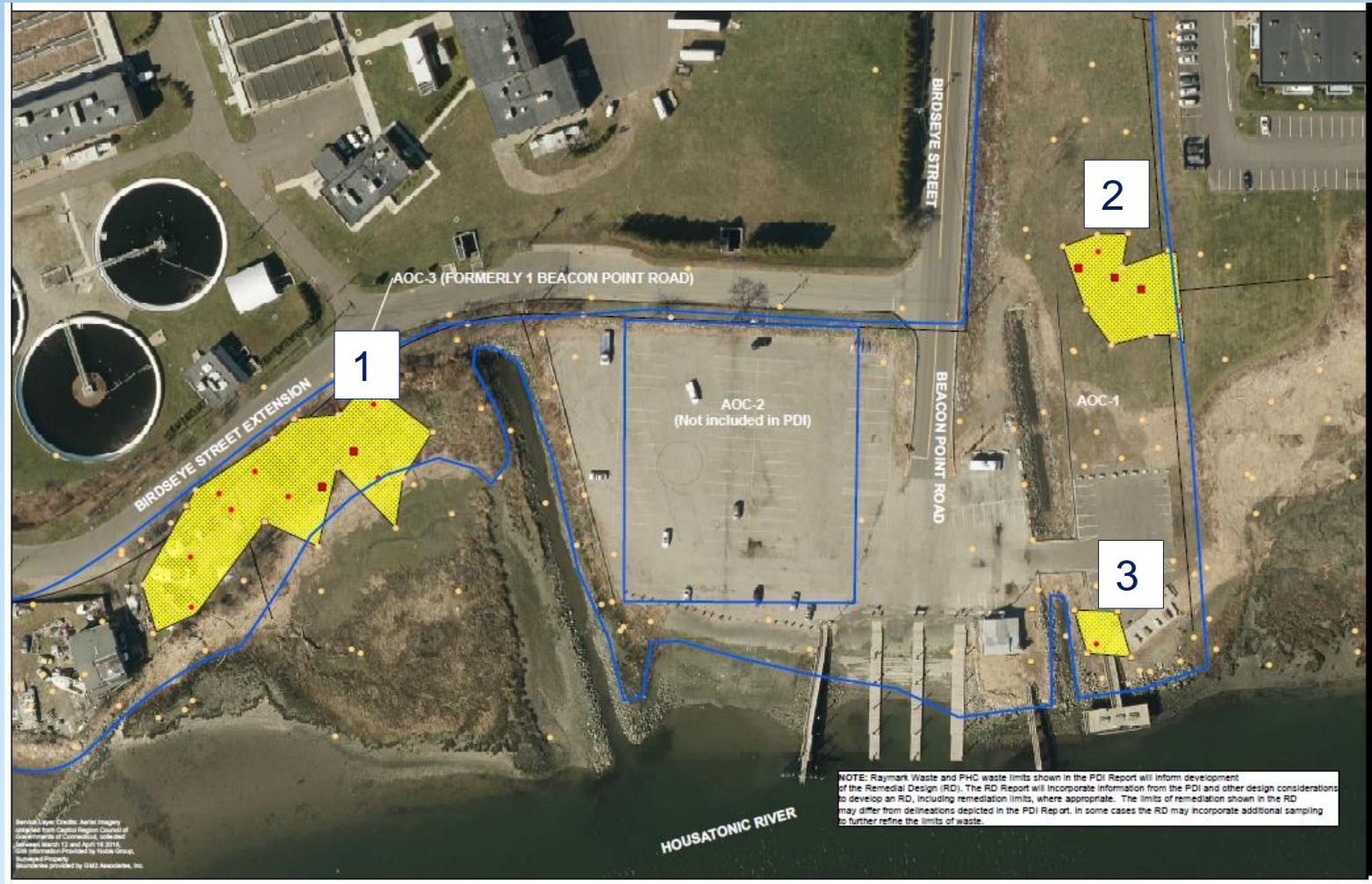


Wooster Park

- Design Estimate = 1,500yds
- Current estimate = about 5,000 yds (~350 trucks)
- Fall 2021
- About 12 weeks to complete
- First neighborhood public meeting was held on May 12th
- Second meeting to be held

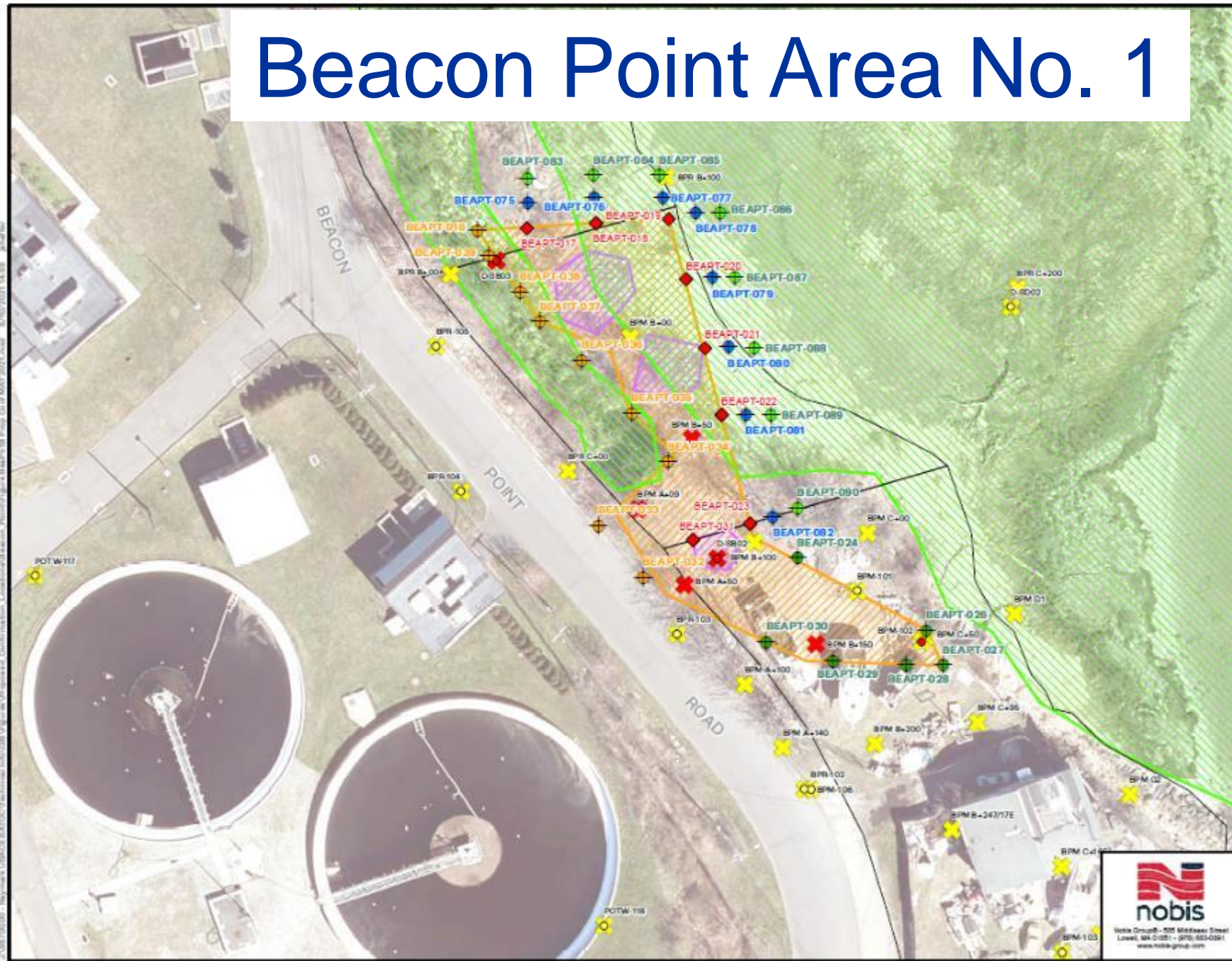


Beacon Point



- 3 RW areas
- 1 and 2 delineated
- 2,400 yds (~200 trucks)
- 250 yds PHC waste (~20 trucks)
- Winter 2021/Spring 2022
- About 10 weeks to complete

Beacon Point Area No. 1



Notes:
 Raymark Waste and Non-Raymark Waste borings, and RW Areas from the Remedial Design Drawings and Pre-Design Investigation.
 Property boundaries are derived from the Remedial Design Drawings.
 Historical Samples 0-4' include samples collected from the following intervals: 0-4' bgs, 1-4' bgs, 2-4' bgs, 1-3' bgs, 2-3' bgs, and 3-4' bgs.
 Historical Samples 0-2' include samples collected from less than or equal to 2' bgs.
 Raymark Waste designation in historical samples are based on exceeding the Raymark Waste Criteria.

Legend

- ◆ To be collected (Initial Confirmation Sample)
- ◇ To be collected (Step-out Sample)
- ◆ Post Construction Confirmation Sample
- ◆ Sample to be held at the laboratory

Confirmation Stepout Sample Required?

- ◆ Yes
- ◆ No

Historical Samples 0-2'

- ✗ Raymark Waste
- ✗ Non-Raymark Waste

Historical Samples 0-4'

- Raymark Waste
- Non-Raymark Waste

- Approx. Survey Boundaries
- Operable Unit 8
- PHC Waste Limits
- Raymark Waste Limits

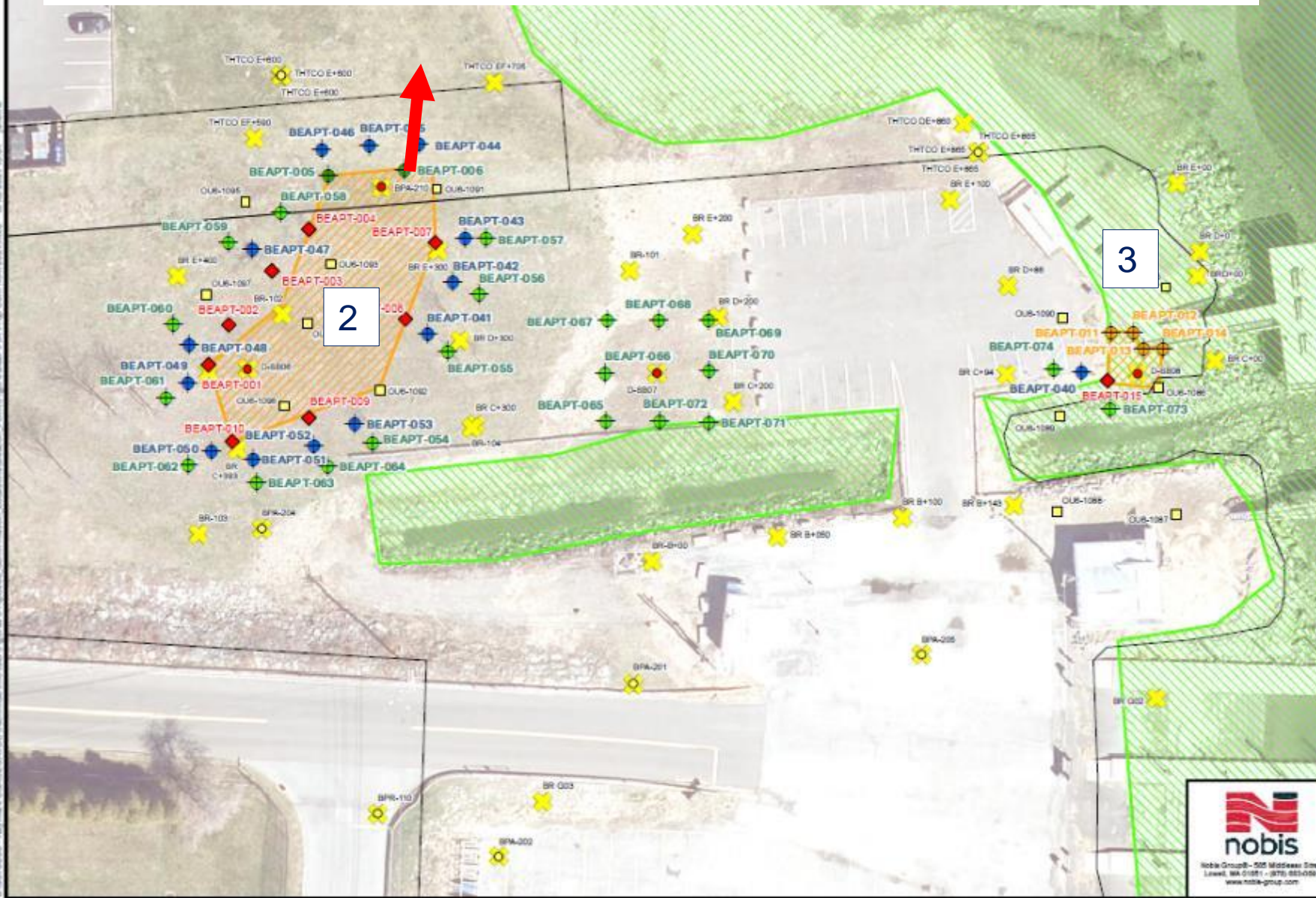
0 20 40 80
 Feet
 1 inch = 40 feet



FIGURE BEAPT-1B
 PROPOSED CONFIRMATION LOCATIONS
 BEACON POINT & 1 BEACON POINT ROAD
 RAYMARK SUPERFUND SITE
 STRATFORD, CONNECTICUT

PREPARED BY: JTS	CHECKED BY: AR
PROJECT NO. 95700.00	DATE: MAY 2021

Beacon Point Areas 2 and 3



Notes:
 Raymark Waste and Non-Raymark Waste borings, and RW Areas from the Remedial Design Drawings and Pre-Design Investigation.
 Property boundaries are derived from the Remedial Design Drawings.
 Historical Samples 0-4' include samples collected from the following intervals: 0-4' bgs, 1-4' bgs, 2-4' bgs, 1-3' bgs, 2-3' bgs, and 3-4' bgs.
 Historical Samples 0-2' include samples collected from less than or equal to 2' bgs.
 Raymark Waste designation in historical samples are based on exceeding the Raymark Waste Criteria.

Legend

- ◆ To be collected (Initial Confirmation Sample)
- ◇ To be collected (Step-out Sample)
- ◆ Post Construction Confirmation Sample
- ◆ Sample to be held at the laboratory

Confirmation Stepout Sample Required?

- ◆ Yes
- ◆ No

Historical Samples 0-4'

- Raymark Waste
- Non-Raymark Waste

Historical Samples 0-2'

- ✖ Raymark Waste
- ✖ Non-Raymark Waste

- Approx. Survey Boundaries
- Raymark Waste Limits
- Operable Unit 8

0 20 40 80
 Feet
 1 inch = 40 feet

N

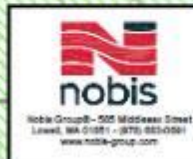


FIGURE BEAPT-1A
 PROPOSED CONFIRMATION LOCATIONS
 BEACON POINT & 1 BEACON POINT ROAD
 RAYMARK SUPERFUND SITE
 STRATFORD, CONNECTICUT

PREPARED BY: JTB	CHECKED BY: AR
PROJECT NO. 95700.00	DATE: MAY 2021

Raybestos Memorial Ballfield (OU4) Update

ENGINEERING CONTROLS

- Apply water, material always wet



9'

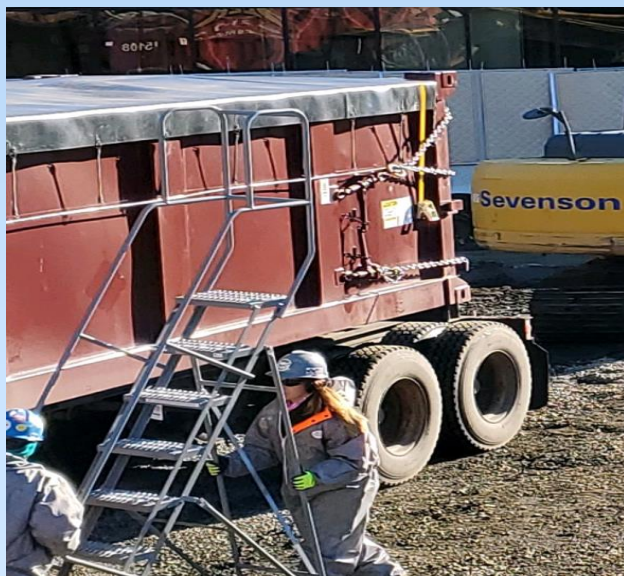
- Perimeter concrete barrier, steel fence, heavy duty sound blanket



- Vibration and Noise Monitoring



- Erosion Control



- Tightly sealed trucks / containers with gasketed gates



- Real time air monitoring



- Posi shell cover system

OU4 Ballfield Work Completed or Ongoing Since May

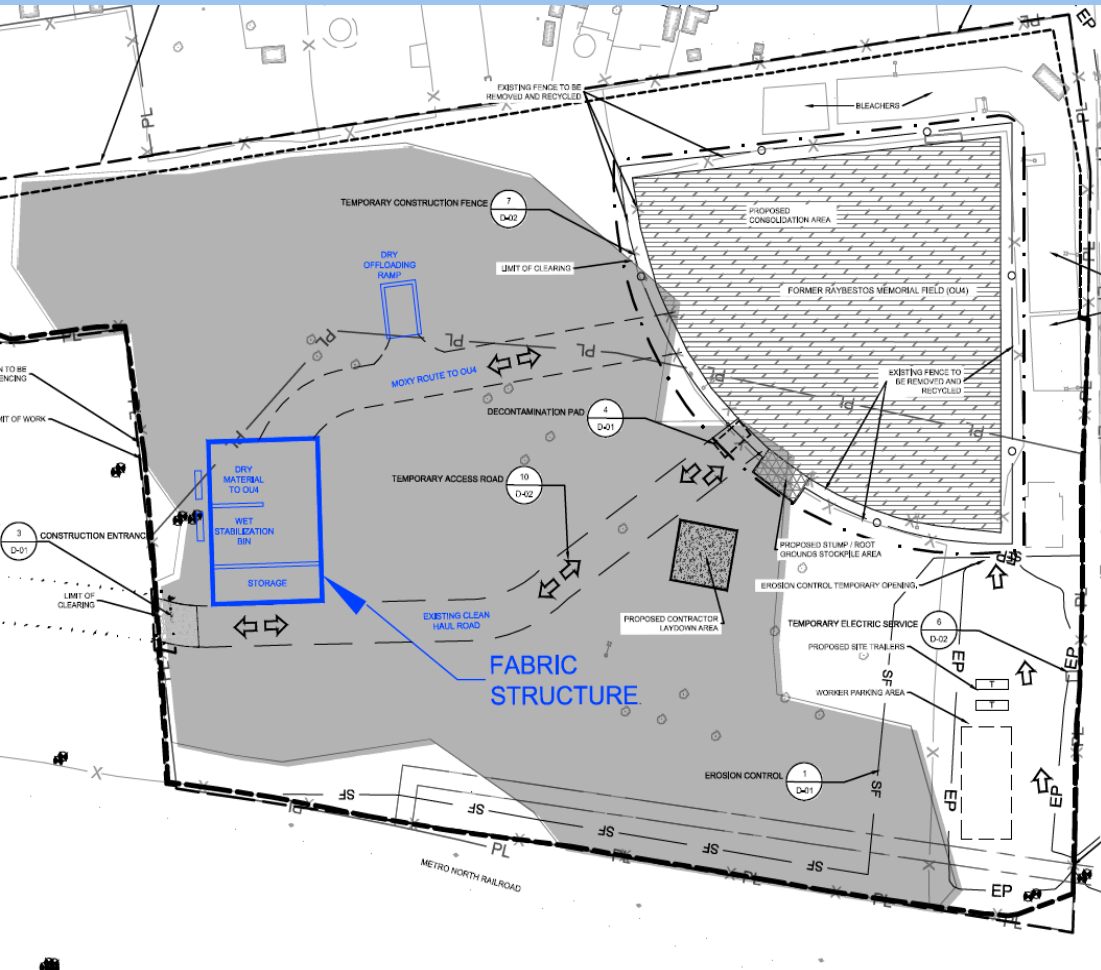


- Approximately 5,300 CY consolidated, compacted and covered.
- Posi-Shell cover applied on all previously imported Raymark Waste at OU4 Ballfield
- OU4 site and cap design ongoing
- Stormwater control and conveyance system design complete
- 5 perimeter air monitors at OU4 and 2 at East Main Street are operating daily

<https://www.ipcamlive.com/5fc7c13309700>



OU4 Containment Structure



- Temporary Fabric Structure (TFS)
- Approx. Dimensions (l x w x h) : 100' x 130' x 40'
- Used primarily for material additives and dewatering
- Closed system with air treatment
- Aluminum structural frame with PVC coated fabric membrane

Air Monitoring Results

OU4 - Air Monitoring Results

- Since 5/26/21 public meeting Daily Average Dust = 0.004 to 0.010 mg/m³
- No exceedances of the OU4 Dust Action Level criteria (0.014 mg/m³)
- All five dust meters and sample collection systems in operation
- One personnel chemical sample collection system
- No exceedances of chemical health and safety criteria
- Posting Weekly Air Monitoring, Chemical Data and Vibration Monitoring Reports on Town Raymark website



OU6 - Air Monitoring Results

- Soil excavation and Site Restoration at 250 East Main Street Rear Property
- Daily Average Dust Measurements 0.001 to 0.006 mg/m³
- No exceedances of the OU6 Dust Action Level criteria (0.019 mg/m³)
- Two dust meters and sample collection systems in operation
- One personnel chemical sample collection system
- No exceedances of chemical health and safety criteria
- Posting Weekly Air Monitoring Reports, Chemical Data, and Vibration Monitoring Reports on Town Website



Perimeter Air Monitoring Updates - OU4/ OU6 Restoration

- All imported clean soil tested every 500-1000 cy to verify meets CT Residential Soil Criteria
- Only during site restoration Dust Action Level raised to 0.150 mg/m³

