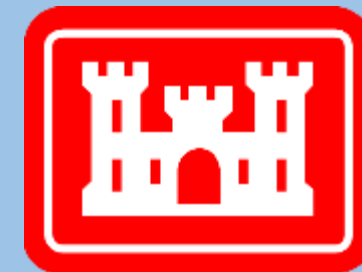


# Community Advisory Group

Raymark Industries,  
Inc. Superfund Site  
Stratford, CT

Jim DiLorenzo, EPA  
Mike Looney, USACE  
Dave Heislein, USACE

January 26, 2022



**US Army Corps  
of Engineers®**

To follow along with the presenters visit:

**[Stratfordct.gov/Raymark](https://stratfordct.gov/Raymark)**

# Virtual Meeting Guidelines

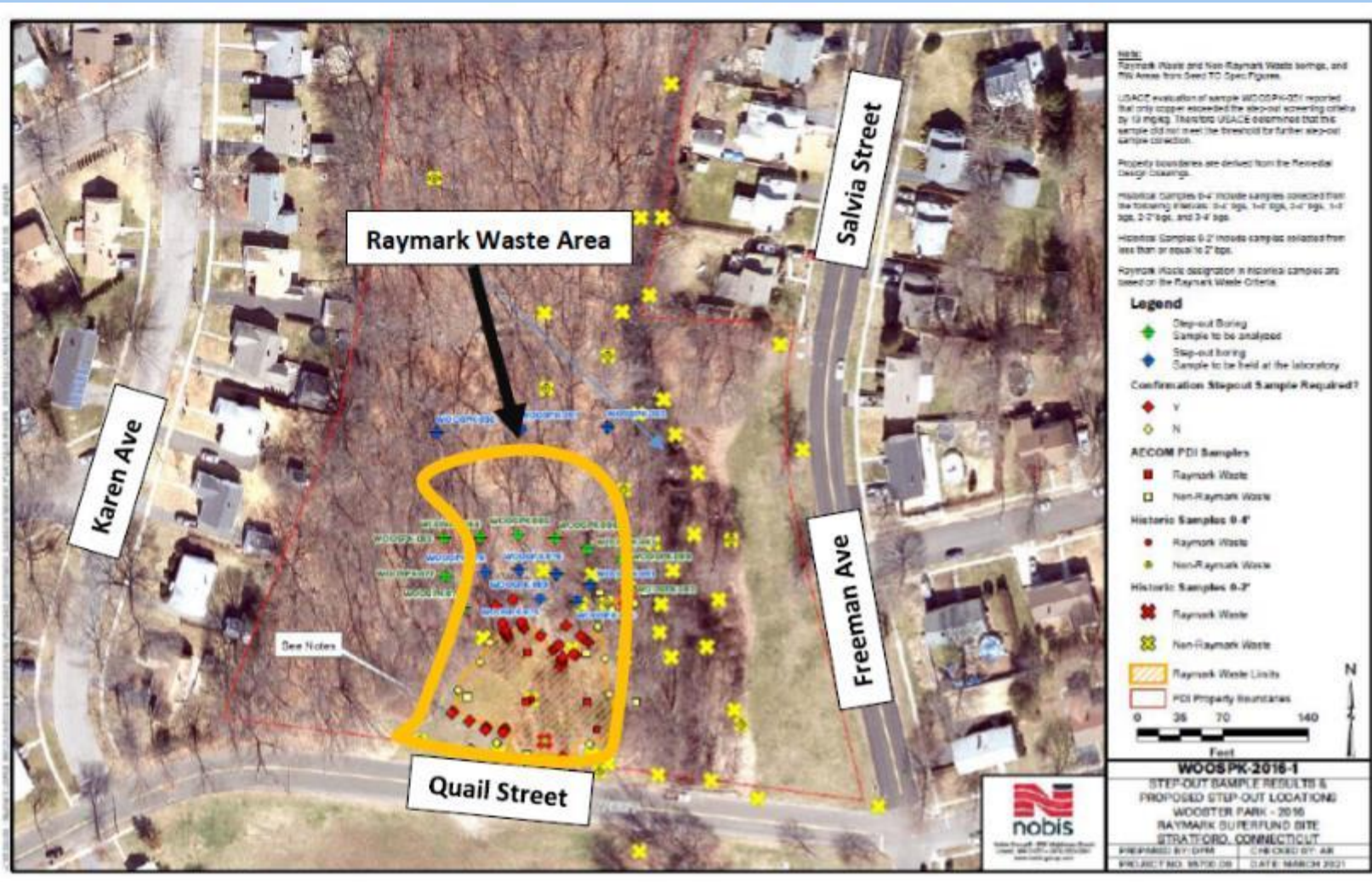
- Everyone will be muted through the presentations - please stay muted to eliminate background noise.
- Hold questions until the end of each presentation.
  - Use the chat box.
  - Ask questions related to the presentation topic
  - Please be respectful of time, so everyone has a chance to speak
  - Mute yourself after speaking
- Be respectful and patient!
- Talk one at a time.
- **This meeting will be recorded.**

# AGENDA

- INTRODUCTIONS AND MEETING RULES
- OPERABLE UNIT 6 (OU6) UPDATES
- RAYBESTOS MEMORIAL FIELD (OU4)
- STORMWATER CONVEYANCE SYSTEM
- OVERALL PROJECT SCHEDULE

# OU6 Updates

# Quail St/Wooster Park



- Began on Nov. 4, 2021
- Finished on Jan. 6, 2022
- **RW: 4,872yds (433 trucks)**
- **PHC: 130cy (15 trucks)**
- First neighborhood public meeting held on May 12<sup>th</sup>
- Second meeting on Sept 22<sup>nd</sup>
- Air Monitoring Issues/1 Day Shutdown
- Restoration this Spring



- Stone base for temp road
- Orange demarcation fabric
- Air monitoring station



# Quail St Stone base



# Quail St

Truck staged  
for loading





# Air Monitoring Station

# Looking towards Quail Street





# Numerous Boulders

# Vacant Lots Behind Blue Goose



- App. 10,000yds (500 trucks)
- Original estimate 4,400yds
- App. 1,400yds PHC (90 trucks)
- Original estimate 660yds PHC
- Started clearing trees on January 18<sup>th</sup>
- Mobilizing this week
- Excavation to begin first week of February
- Expect to complete in April
- Held a neighborhood virtual meeting on Jan. 12<sup>th</sup>
- Follow-up Q&A virtual meeting on Jan. 19<sup>th</sup>





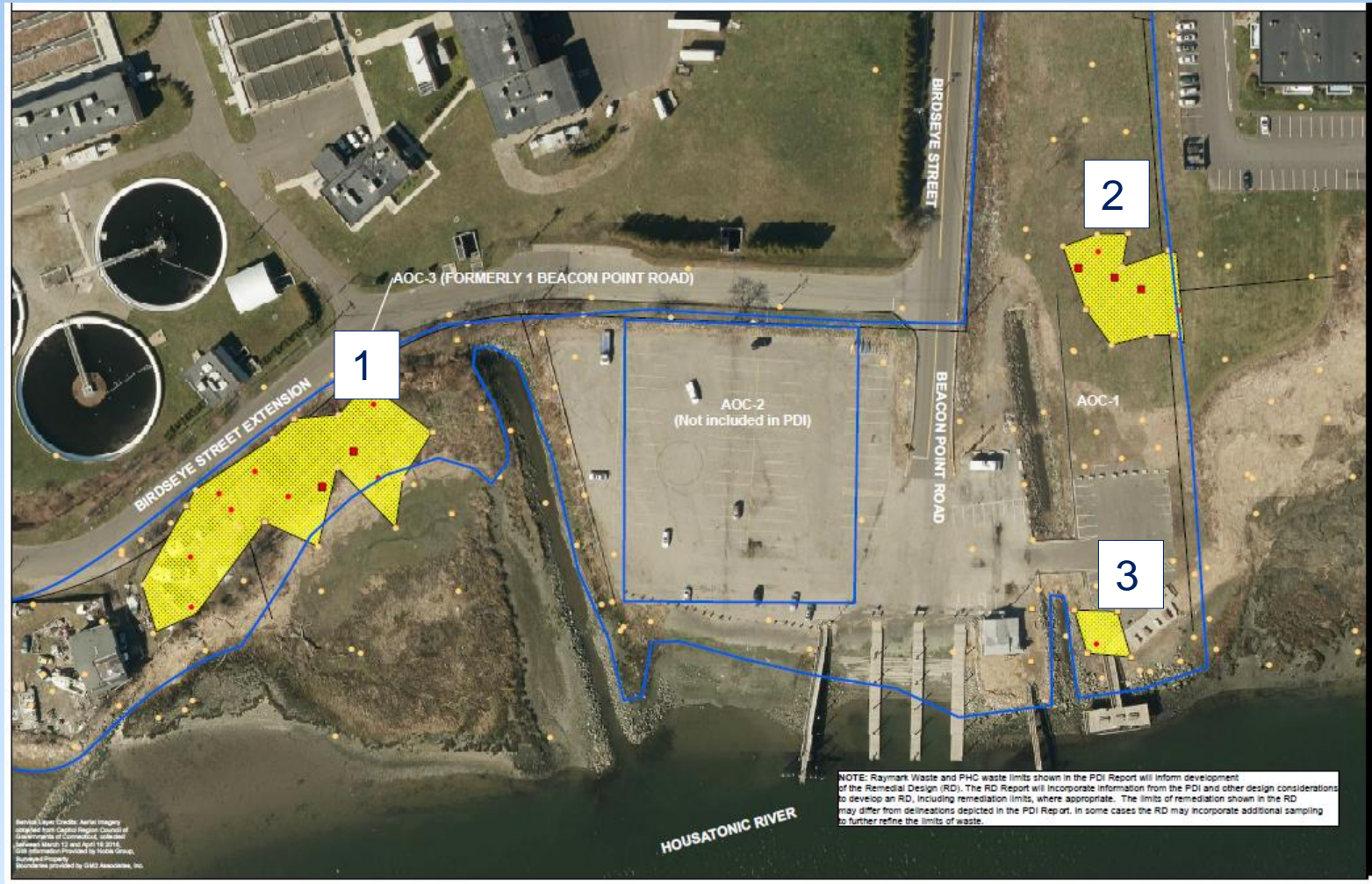




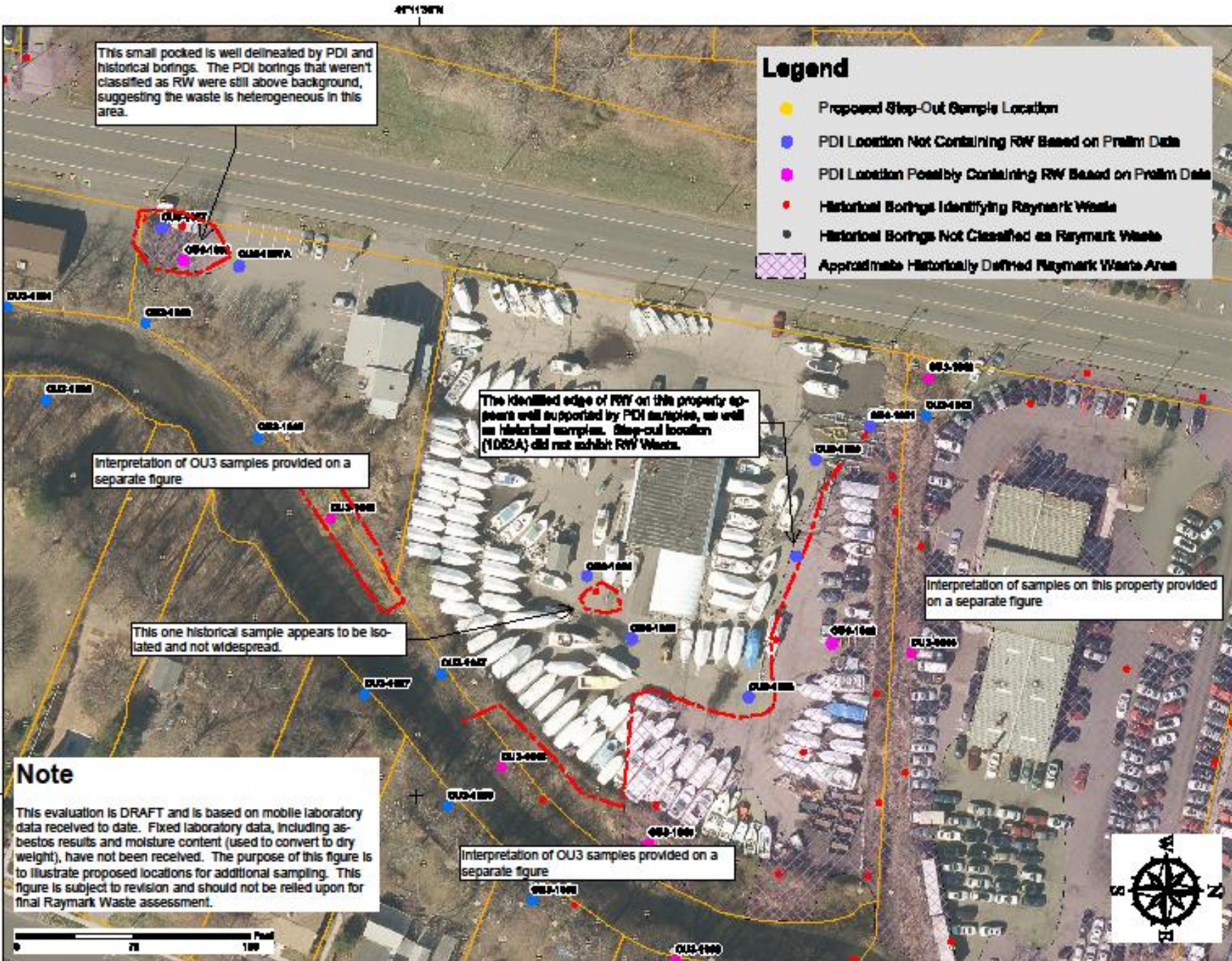
OU6 Area	Location	Excavation Dates	Volume (cy)	Number of truck trips?	Number of Properties	Notes
Glyne Manufacturing	380 East Main	Sept 16 -17, 2020	51.70	4	1	Phase 1 ELUR needed
Karate Studio	190 Ferry Boulevard	Dec 2 - 10, 2020	87.31	10	1	Phase 1 ELUR needed Not in 2016 ROD
Liquor Store	200 Ferry Boulevard	Dec 2 - 10, 2020	481.83	64	1	Phase 1 ELUR needed
DOT ROW along 190/200 Ferry Blvd	190/200 Ferry Boulevard ROW	Dec 2 - 10, 2020	109.30	11	1	Phase 1 ELUR needed Not in 2016 ROD
DOT Exit 33	Barnum Ave	Jan 19 – 20, 2021	345.57	19	1	DOT via Haul Road Not in 2016 ROD
Ashcroft (front), Dry Cleaner and Hair Salon	250, 304 and 340 East Main Street	Feb 16 – April 19, 2021	2,785.3	251	3	Phase 1 ELUR needed
			794.60	60	3	To Emelle, AI
302/350 East Main Street	302/350 East Main Street	Sept 15 - 16, 2021	127	9	2	Phase 2 ELUR needed Not in 2016 ROD
DOT ROW	Ferry Blvd and East Broadway	Sept 20 to Oct 1, 2021	430	47	1	Phase 2
171 Ferry Blvd	Snaxx Plus Convenience Store	October 4 to 19, 2021	389	41	1	Phase 2 ELUR needed Not in 2016 ROD
Ashcroft Rear	250 East Main Street	June 9 to Nov 3, 2021	9,281	745	1	Phase 2 ELUR needed
			377	35	1	To FTS/bind lead
Wooster Park	Quail Street	Nov 9, 2021, to Jan 5, 2022	4,872	433	1	Phase 1 ELUR needed
			130	15	1	To FTS/bind lead
TOTALS TO DATE =		Raymark Waste	18,573	1,593	14	+4,896cy +433
		PHC Waste	1,302	110	5	+130cy +15

# OU6 Remediation Tracking Table

# Beacon Point



- 3 RW areas
- 3,250yds (210 trucks)
- Original est. 2,400yds
- 250 yds PHC waste (~20 trucks)
- Still chasing area 2
- App. Spring 2022
- About 6 weeks to complete



# Hitchcock Marina

- Summer of 2022
- Minimal boats (+/- 20)
- RW limited to left side

# OU4 Updates

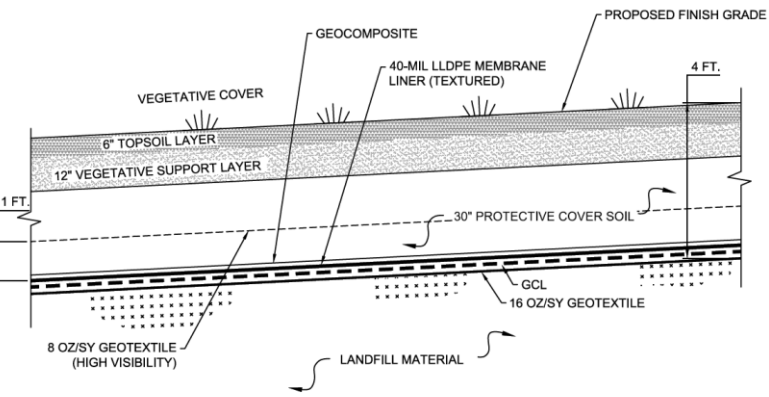
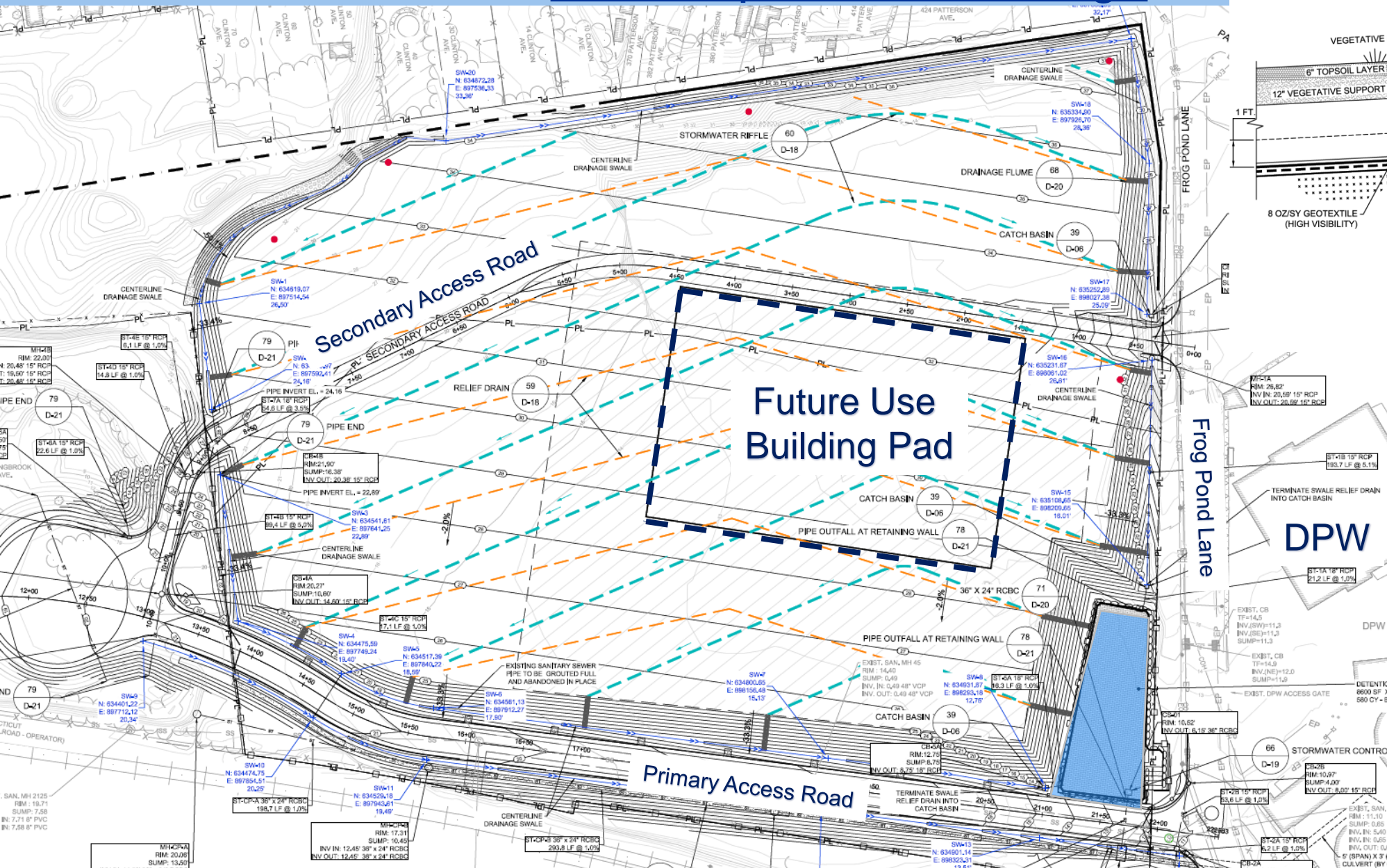
# OU4 Ballfield Work Completed or Ongoing Since November



<https://www.ipcamlive.com/5fc7c13309700>

- Approximately 18,500 CY of material has been consolidated, compacted and covered
- All material consolidated to date has been spread and compacted to 95%
- Posi-Shell cover applied on all previously imported Raymark Waste at the Ballfield
- Material from the Vacant Lot (approx. 9K CY) will be stockpiled at OU4 over winter, then spread and compacted in the spring
- Stormwater control system designs complete, contract acquisition process underway
- 5 perimeter air monitors at OU4 are operating daily

# OU4 Cap and Site Design



**51** TYPICAL CAP SECTION  
NOT TO SCALE

- 95% design complete
- Incorporates future use
- Low permeability cap
- 2 Access points from Frog Pond Lane
- Entrance/Egress to Haul Road
- Max. elevation is 37'
- Top deck slope 2%
- Side slopes 3:1

# OU4 Concept



- 3-D concept based on previous design
- Site design accommodates future use by the Town
- 200' x 300' building pad for future development. Will accommodate a variety of options.
- Access from Frog Pond Lane and Longbrook Ave via Haul Road
- Site stormwater will be collected and carried via new conveyance system and pumpstation

# OU4 Stormwater System



# Stormwater System Upgrades



# New Pump Station

- 4 Axial Flow Pumps
- 200 CFS Capacity
- Operates during significant storm and high-water events
- Masonry Pumphouse



# Air Monitoring Updates

# OU4 - Air Monitoring Results

- Since 11/15/21 public meeting Daily Average Dust = 0.003 to 0.013 mg/m<sup>3</sup>
- No exceedances of the OU4 Dust Action Level criteria (0.014 mg/m<sup>3</sup>)
- All five dust meters and sample collection systems in operation
- One personnel chemical sample collection system
- No health and safety risks to workers or residents
- Action levels for Asbestos exceeded 11/16/21 and 12/7/21
- Chemical analyses found wood fibers, not asbestos
- Action level for Lead exceeded 1/3/22
- Action Level = 90-day average to ensure safety (0.00015 mg/m<sup>3</sup>)
- Actual 90-day average = 0.000017 mg/m<sup>3</sup> (10%)
- Calls with Town, CTDPH, CT DEEP and EPA review data/actions
- Posting Weekly Air Monitoring, Chemical Data and Vibration Monitoring Reports on Town Raymark website



# OU6 - Air Monitoring Results

- Soil excavation and Restoration at Wooster Park
- Daily Average Dust Measurements 0.000 to 0.006 mg/m<sup>3</sup>
- No exceedances of the OU6 Dust Action Level criteria (0.019 mg/m<sup>3</sup>)
- Two dust meters and sample collection systems in operation
- One personnel chemical sample collection system
- No health and safety risks to workers or residents
- Action level for Lead exceeded 11/29/21, 12/8/21 and 1/3/22
- 11/29 and 12/7 within fence, 1/3/22 outside source
- Added third meter outside work area near homes 12/20/21
- Action Level = 90-day average to ensure safety (0.00015 mg/m<sup>3</sup>)
- Actual 90-day average = 0.000021 mg/m<sup>3</sup> (20%)
- Calls with Town, CTDPH, CT DEEP and EPA review data/actions
- Posting Weekly Air Monitoring Reports, Chemical Data, and Vibration Monitoring Reports on Town Website



# Remediation Schedule

- September 2020
  - All East Main Street properties remediated
  - Several properties on Ferry Boulevard remediated
  - Quail Street as Wooster Park remediation
- **Mid-January to April 2022**
  - **Remediate Vacant Lots**
  - **Approximately 3 months to complete**
- April to November 2022
  - Beacon Point, Hitchcock Marina, Third Avenue? Lockwood?
- 2023
  - Remediate Ferry Creek and Remaining Ferry Boulevard properties
  - Morgan Francis?
- 2024
  - Construct Impermeable OU4 Cap



Construct  
Stormwater System

# Questions?

- Be respectful of time so everyone has a chance to speak
- Please speak one at a time.
- We will monitor the chat box for questions



# Next CAG Meeting March 30 at 6:30pm

For more information about the Raymark Superfund Site, including copies of presentation slides, documents and meeting minutes, please visit: [townofstratford.com/Raymark](http://townofstratford.com/Raymark).



# Thank you for joining!

- Visit [stratfordct.gov/Raymark](http://stratfordct.gov/Raymark) for updates, contact information, air monitoring results, meeting dates, meeting recordings and Powerpoint slides
- Email Alivia at: [acoleman@townofstratford.com](mailto:acoleman@townofstratford.com) with further questions, concerns, feedback or to sign up for email distribution list.