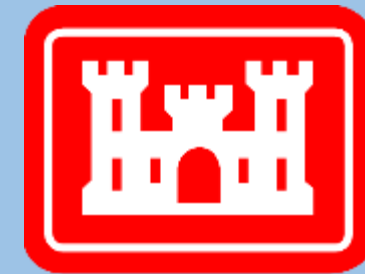


Community Advisory Group

Raymark Industries,
Inc. Superfund Site
Stratford, CT

Jim DiLorenzo, EPA
Mike Looney, USACE
Dave Heislein, USACE

July 27, 2022



**US Army Corps
of Engineers®**

To download presentation slides visit:

Stratfordct.gov/Raymark

Hybrid Meeting Guidelines

Virtual Attendees:

- Everyone will be muted throughout the presentations - please stay muted to eliminate background noise.
- Hold questions until the end of the meeting.
 - Use the chat box.
 - -Mute yourself after speaking

Everyone:

- Ask questions related to the presentation topic
- Please be respectful of time, so everyone has a chance to speak
- Be respectful and patient!
- Talk one at a time.
- **This meeting will be recorded.**

AGENDA

- INTRODUCTIONS AND MEETING RULES
- OVERVIEW OF ACTIVITIES SINCE OUR LAST IN PERSON CAG MEETING ON FEBRUARY 26, 2020
- OPERABLE UNIT 6 (OU6) UPDATES
- RAYBESTOS MEMORIAL FIELD (OU4)
- STORMWATER CONVEYANCE SYSTEM
- AIR MONITORING
- OVERALL PROJECT SCHEDULE



Welcome Back!

- ✓ February 26, 2020 - Last in person CAG meeting
- ✓ Virtual CAG Meetings – 19 between February 2020 and May 2022
- ✓ CAG Meeting Frequency – Changed to bi-monthly in September 2021
- ✓ Additional Public Meetings – Quail St (May & Sept 2021) Vacant Lot (Jan 2022)

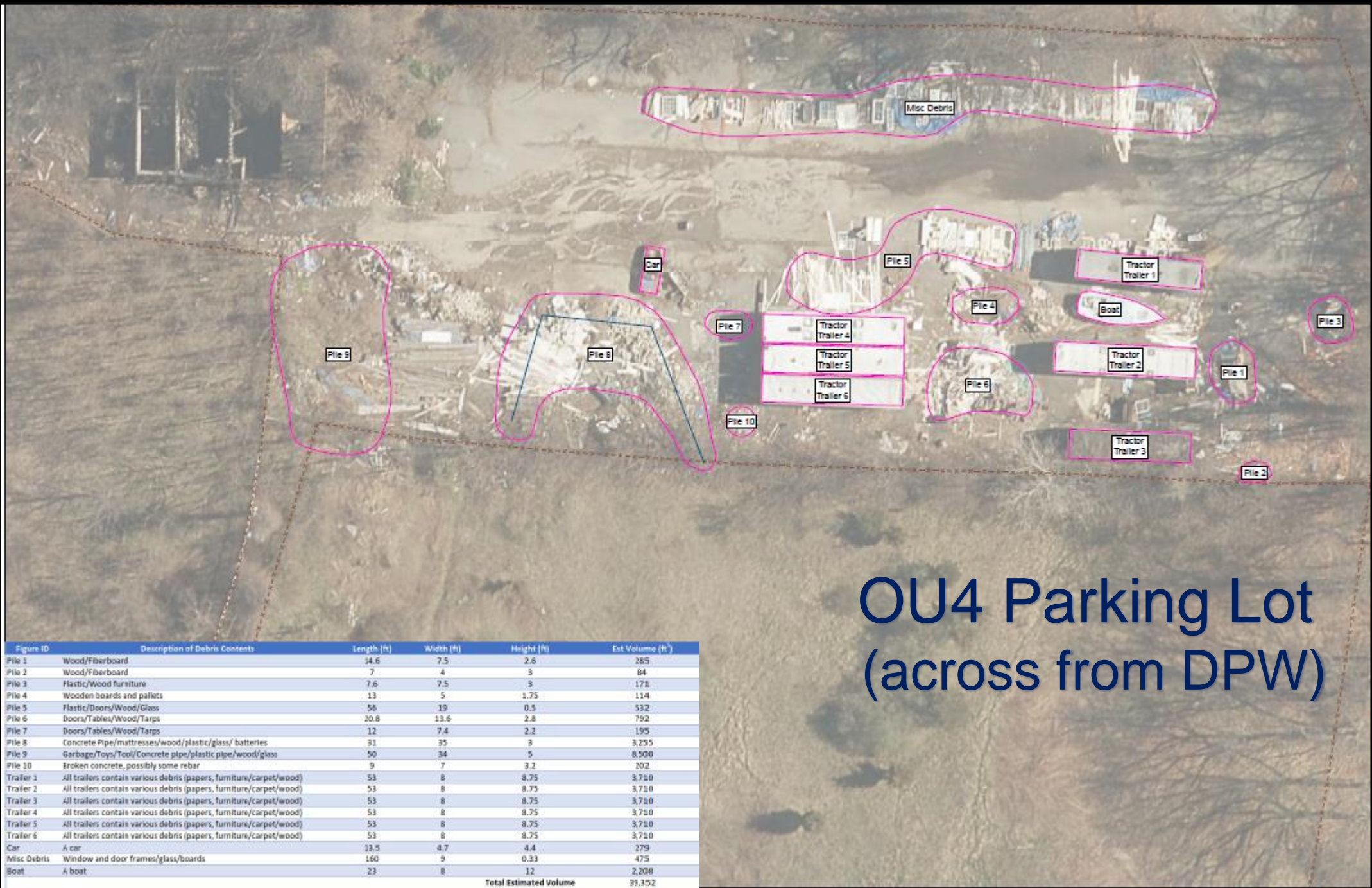
Activities Since February 2020

Granted status as a “mission critical project” during COVID



Completed barriers and haul road

March 2019 to November 2020



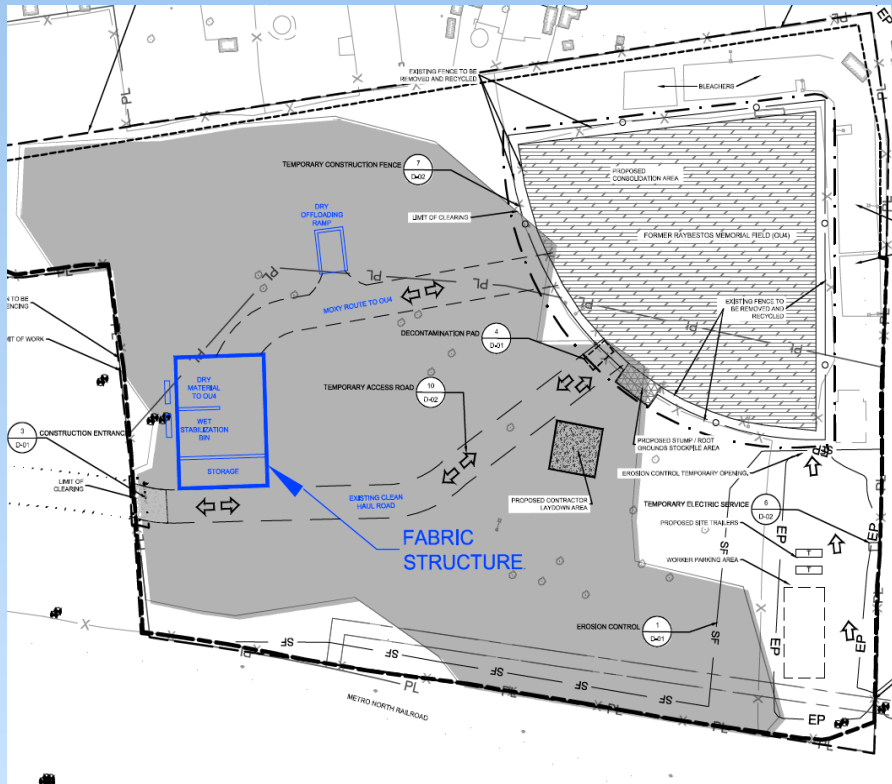
Demolished grandstands and removed debris

July 2020 to November 2020

OU4 Parking Lot (across from DPW)

Figure ID	Description of Debris Contents	Length (ft)	Width (ft)	Height (ft)	Est Volume (ft ³)
Pile 1	Wood/Fiberboard	14.6	7.5	2.6	285
Pile 2	Wood/Fiberboard	7	4	3	84
Pile 3	Plastic/Wood furniture	7.6	7.5	3	178
Pile 4	Wooden boards and pallets	13	5	1.75	114
Pile 5	Plastic/Doors/Wood/Glass	56	19	0.5	532
Pile 6	Doors/Tables/Wood/Tarps	20.8	13.6	2.8	752
Pile 7	Doors/Tables/Wood/Tarps	12	7.4	2.2	195
Pile 8	Concrete Pipe/mattresses/wood/plastic/glass/ batteries	31	35	3	3,295
Pile 9	Garbage/Toys/Tool/Concrete pipe/plastic pipe/wood/glass	90	34	5	8,500
Pile 10	Broken concrete, possibly some rebar	9	7	3.2	202
Trailer 1	All trailers contain various debris (papers, furniture/carpet/wood)	53	8	8.75	3,710
Trailer 2	All trailers contain various debris (papers, furniture/carpet/wood)	53	8	8.75	3,710
Trailer 3	All trailers contain various debris (papers, furniture/carpet/wood)	53	8	8.75	3,710
Trailer 4	All trailers contain various debris (papers, furniture/carpet/wood)	53	8	8.75	3,710
Trailer 5	All trailers contain various debris (papers, furniture/carpet/wood)	53	8	8.75	3,710
Trailer 6	All trailers contain various debris (papers, furniture/carpet/wood)	53	8	8.75	3,710
Car	A car	13.5	4.7	4.4	279
Misc Debris	Window and door frames/glass/boards	160	9	0.33	475
Boat	A boat	23	8	12	2,208
Total Estimated Volume					39,352

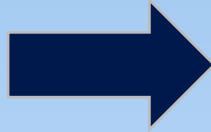
OU4 Containment Structure (Spring 2021)



- Temporary Fabric Structure (TFS)
- Approx. Dimensions (l x w x h) : 100' x 130' x 40'
- Used for any “extra handling” and “dewatering”;
PHC pre-treatment
- Negative pressure closed system with air
treatment

Live Stream Cameras at OU4

1. Mounted on barrier



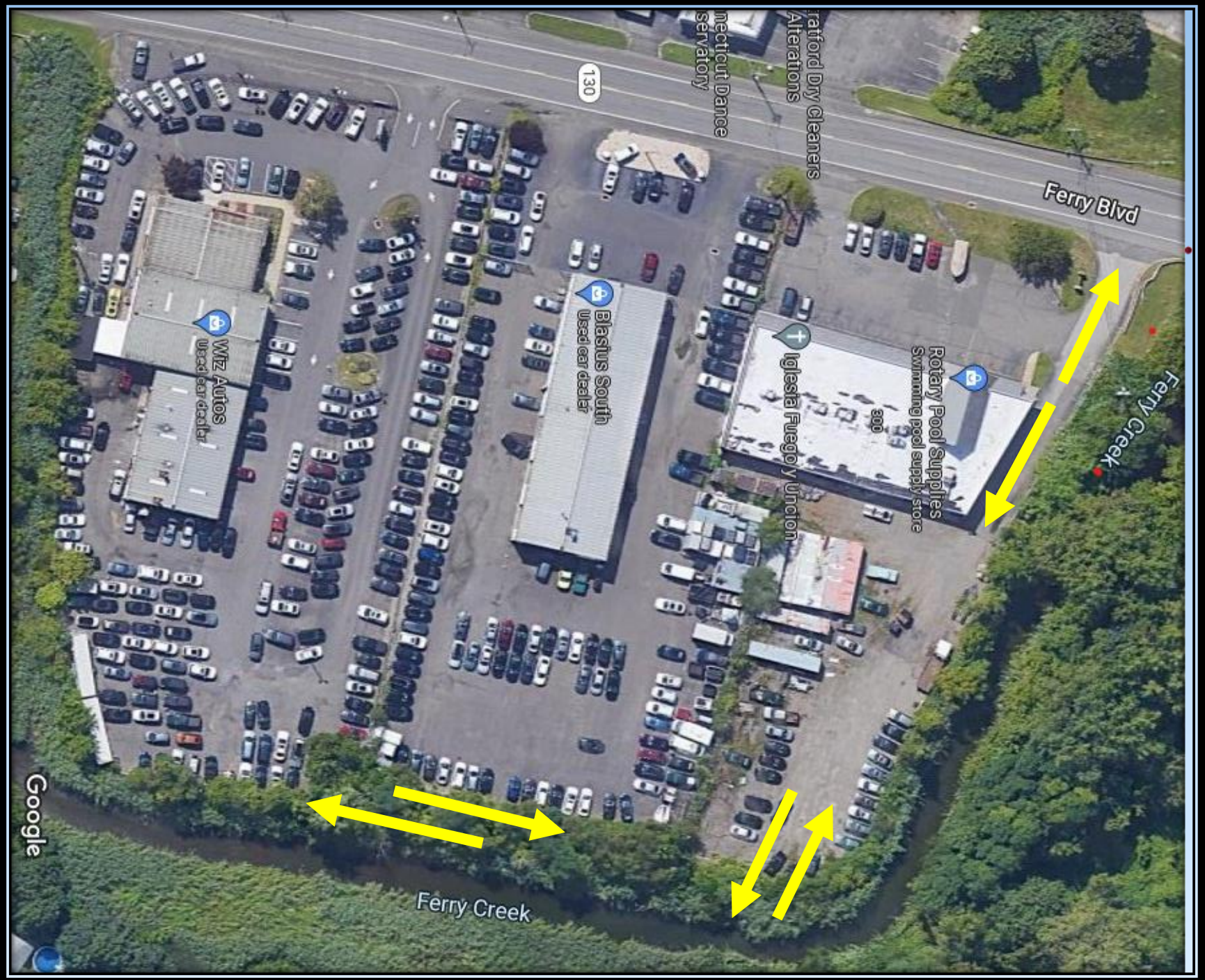
2. Mounted above paved area



EPA Stratford Office

- 300 Ferry Blvd (former Ski Shop)
- 5-year lease (May 2021)
- Office space for EPA, USACE, and contractors (about a dozen staff)
- Benefits:
 - Publicly accessible
 - Space for community meetings
 - Is an OU6 parcel (1 less impacted bus)
 - Access to other OU6 parcels
 - Egress and laydown for OU3 cleanup





Remediation of OU6
properties began in
September 2020

380 E. Main Street (Glyne Manufacturing)

- First OU6 removal
- Completed on September 16th and 17th 2020
- Estimated 40cy
- **Actual 52cy** (4 trucks)
- Accessed through neighboring property

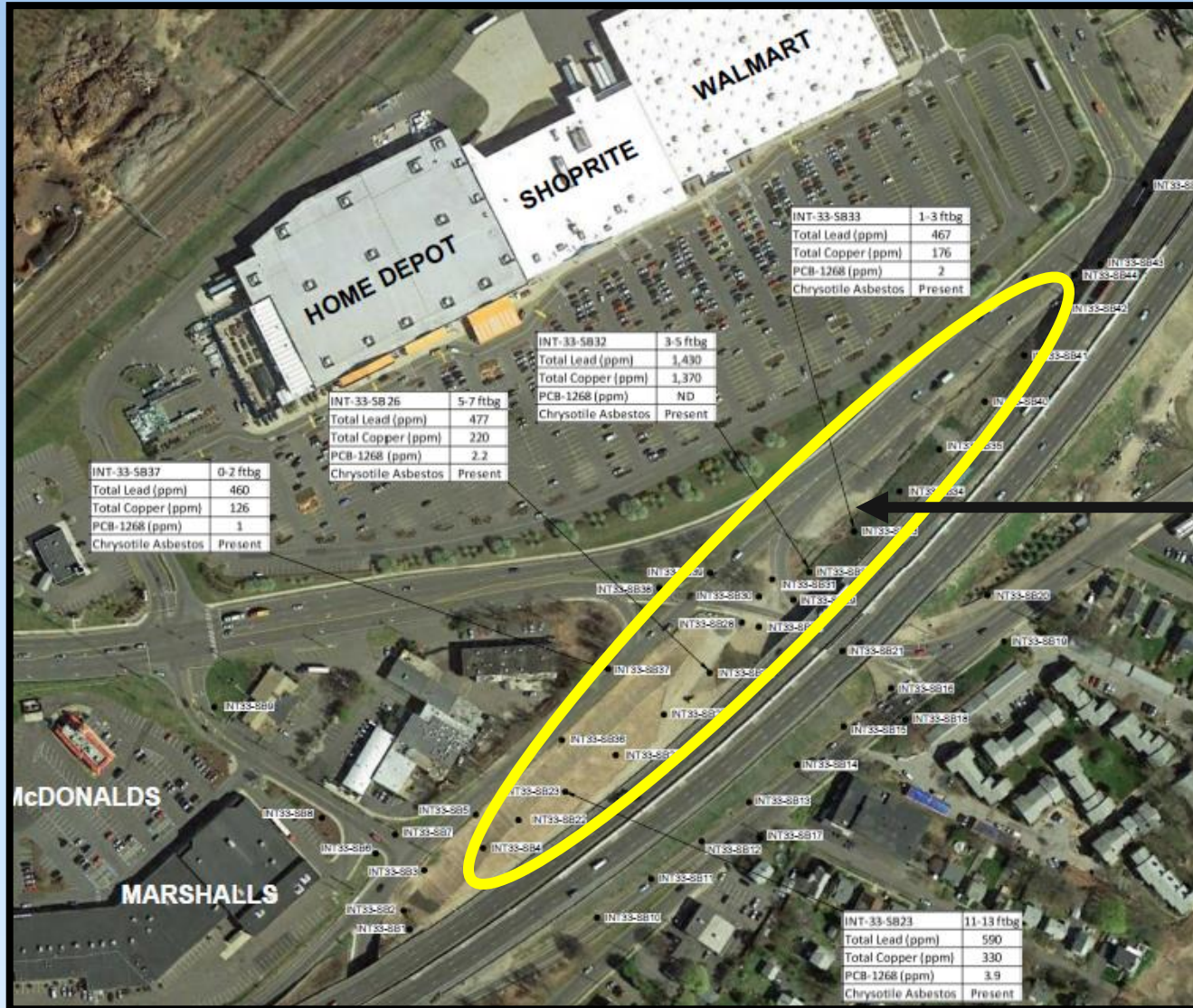


200 Ferry Boulevard (liquor store)

- Expanded onto 190 Ferry Blvd and DOT right of way
- Completed Dec 2nd to Dec 21st 2020
- Estimated 500cy
- **Actual 679cy**
 - 190: 87cy
 - 200: 483cy
 - DOT: 109cy



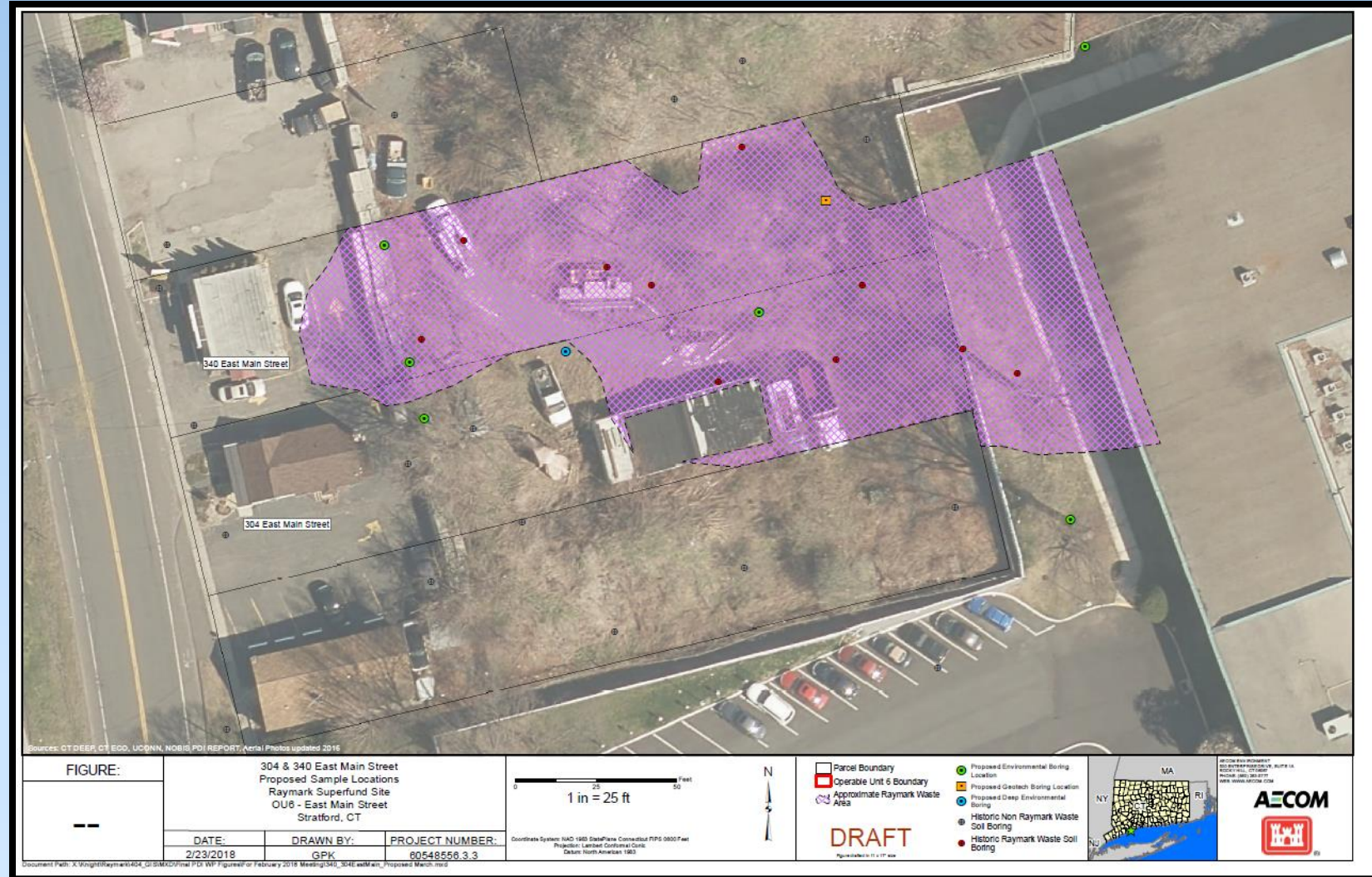
Exit 33 DOT Waste



Pockets of Raymark Waste removed by CTDOT on Jan 19th and 20th 2021 totaled 346cy.

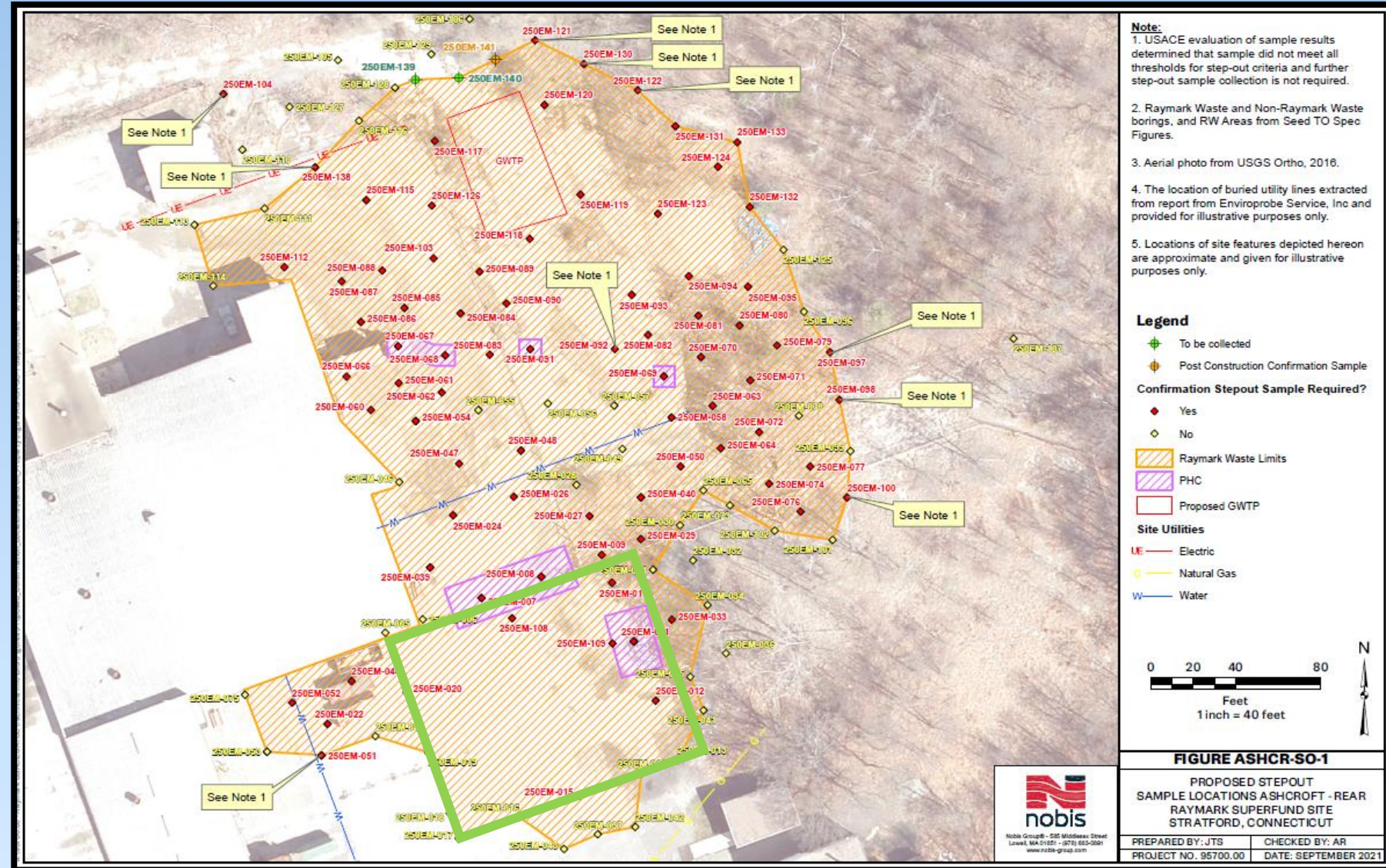
250, 304 and 340 East Main Street

- 250 EM (Ashcroft Front)
- 304 EM (Hair Salon)
- 340 EM (Dry Cleaner)
- Completed Feb 16th to April 19th 2021
- **Actual 3,580cy**
 - 2,785cy (251 trucks)
 - 795cy (60 trucks)
- Estimated 5,000cy



Ashcroft Rear

- June 9 to Nov 3, 2021
- Removed:
 - 9,259yds (745 loads)
 - PHC 377yds (35 loads)
 - 551,589 gallons gw treated
- Complications
 - High water table
 - Record rain/storms
 - Ashcroft deliveries
 - Continued growth in remediation area
- Original estimate:
 - 1,500yds
 - No PHC

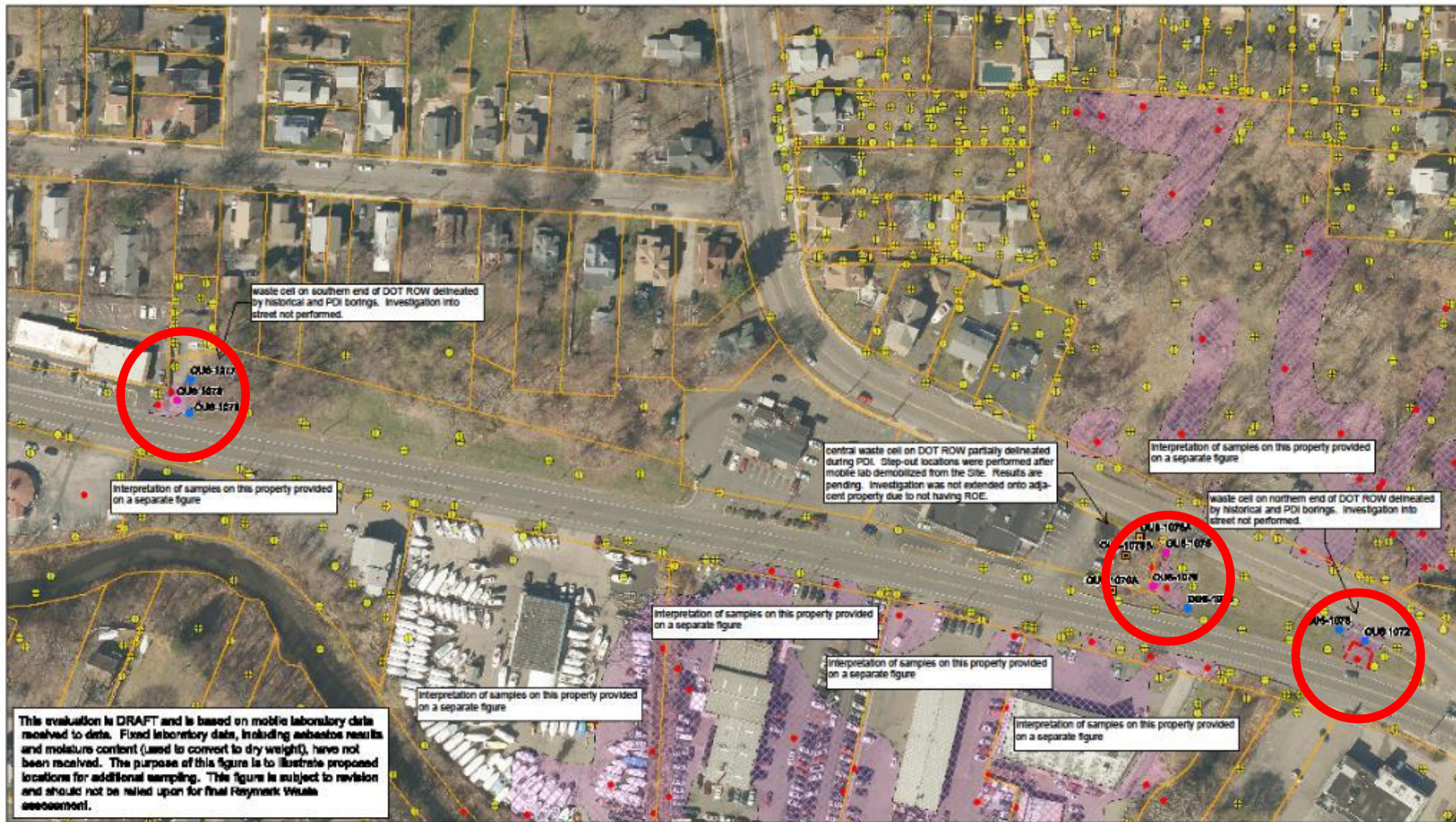


DOT ROW along Ferry BLVD

Sept 20 to Oct 1, 2021, and March 31, 2022

Expanded onto 171 FB (store)

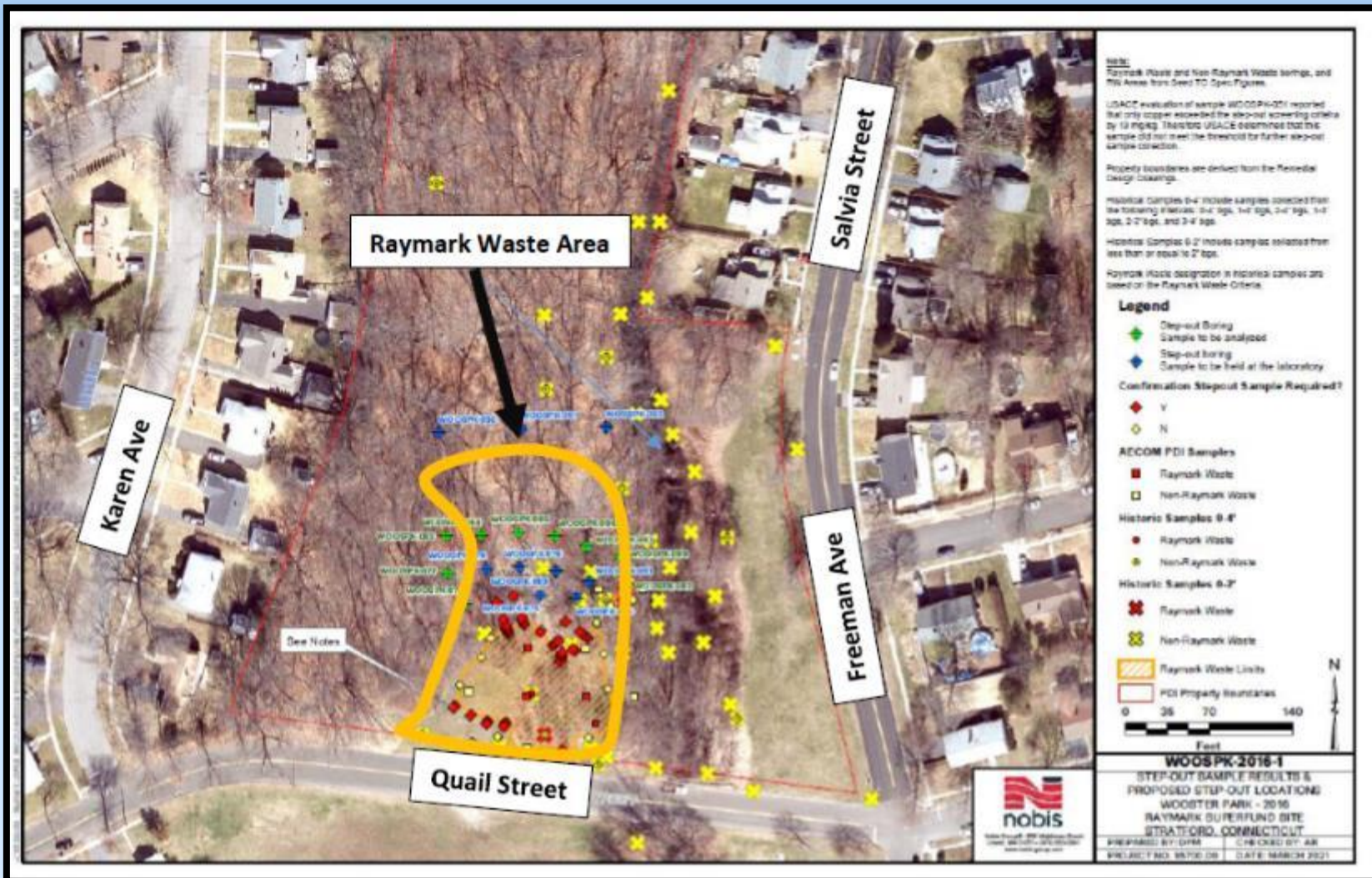
Est. 900cy
Actual 867cy
 94 trucks



This evaluation is DRAFT and is based on mobile laboratory data received to date. Fixed laboratory data, including asbestos results and moisture content (used to convert to dry weight), have not been received. The purpose of this figure is to illustrate proposed locations for additional sampling. This figure is subject to revision and should not be relied upon for final Raymond Waste assessment.

FIGURE:			DRAFT				
Preliminary PDI Results Raymond Superfund Site Stratford, CT							
DATE:	DRAWN BY:	PROJECT NUMBER:					
12/13/2017	GPK	6054-8686.6.4					

Quail Street/Wooster Park Area



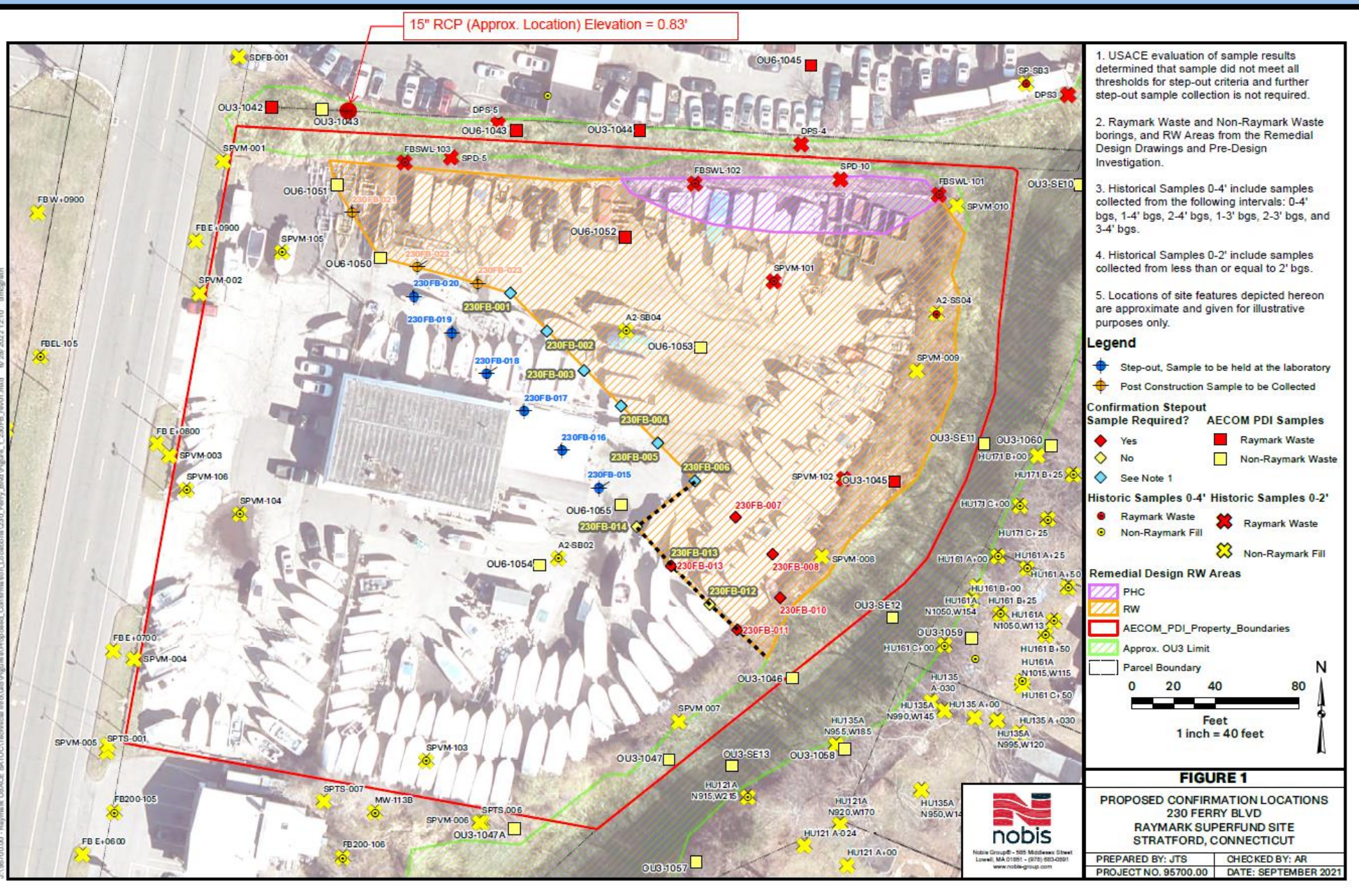
- Nov 9, 2021 to Jan 5, 2022
- Design Estimate = 1,500cy
- **Actual 4,872cy** (433 trucks)
- PHC 130cy (15 trucks)
- Distance
- Boulders
- Public meetings held in May and September 2021
- Restored in May 2022 with boulders, trees and grass

Vacant Lots Behind the Blue Goose



- Jan. 18th to May 11th 2022
- 9,622yds (905 trucks)
- 1,362yds PHC (121 trucks)
- Buried foundation
- Wetland area in rear
- Restoration
 - Parking lot repaved/stripped
 - Fence replaced
 - About 40 border trees/arborvitae
 - Compacted gravel

OU6 Current Update



Hitchcock Marine

Plus adjacent drainage ditch

- Began June 13
- Minimal boats
- Est 5,000cy (3,820cy/360 trucks)
- Est 500yds PHC (being removed now)
- Done early Aug

Excavation at Marine (looking towards rear)



Excavation at Marine (close up)



Excavation at Marine (drainage ditch)



Excavation at Marine (air monitoring)



OU6 Area	Location	Excavation Dates	Volume (cy)	Number of truck trips?	Number of Properties	Notes
Glyne Manufacturing	380 East Main	Sept 16 -17, 2020	51.70	4	1	Phase 1 ELUR needed
Karate Studio	190 Ferry Boulevard	Dec 2 - 10, 2020	87.31	10	1	Phase 1 ELUR needed Not in 2016 ROD
Liquor Store	200 Ferry Boulevard	Dec 2 - 10, 2020	481.83	64	1	Phase 1 ELUR needed
DOT ROW along 190/200 Ferry Blvd	190/200 Ferry Boulevard ROW	Dec 2 - 10, 2020	109.30	11	1	Phase 1 ELUR needed Not in 2016 ROD
DOT Exit 33	Barnum Ave	Jan 19 – 20, 2021	345.57	19	1	DOT via Haul Road Not in 2016 ROD
Ashcroft (front), Dry Cleaner and Hair Salon	250, 304 and 340 East Main Street	Feb 16 – April 19, 2021	2,785.3	251	3	Phase 1 ELUR needed
			794.60	60	3	To Emelle, AI
302/350 East Main Street	302/350 East Main Street	Sept 15 - 16, 2021	127	9	2	Phase 2 ELUR needed Not in 2016 ROD
DOT ROW	Ferry Blvd and East Broadway	Sept 20 to Oct 1, 2021	430	47	1	Phase 2
		Supp on March 31, 2022	48	6		
171 Ferry Blvd	Snaxx Plus Convenience Store	October 4 to 19, 2021	389	41	1	Phase 2 ELUR needed Not in 2016 ROD
Ashcroft Rear	250 East Main Street	June 9 to Nov 3, 2021	9,281	745	1	Phase 2 ELUR needed
			377	35	1	To FTS/bind lead
Wooster Park	Quail Street	Nov 9, 2021 to Jan 5, 2022	4,872	433	1	Phase 1 ELUR needed
			130	15	1	To FTS/bind lead
Vacant Lots	Behind 326 FB	Jan 18 to 2022 to May 11, 2022	9,622	905	2	Phase 2 ELUR needed
			1,362	121	2	To FTS/bind lead
Hitchcock Marine	230 Ferry Blvd	June 13 to XXX	3,820	360	1	Phase 3 ELUR needed
TOTALS TO DATE =			Raymark Waste	32,063	2,784	17
			PHC Waste	2,664	231	7

OU6 Remediation Tracking Table

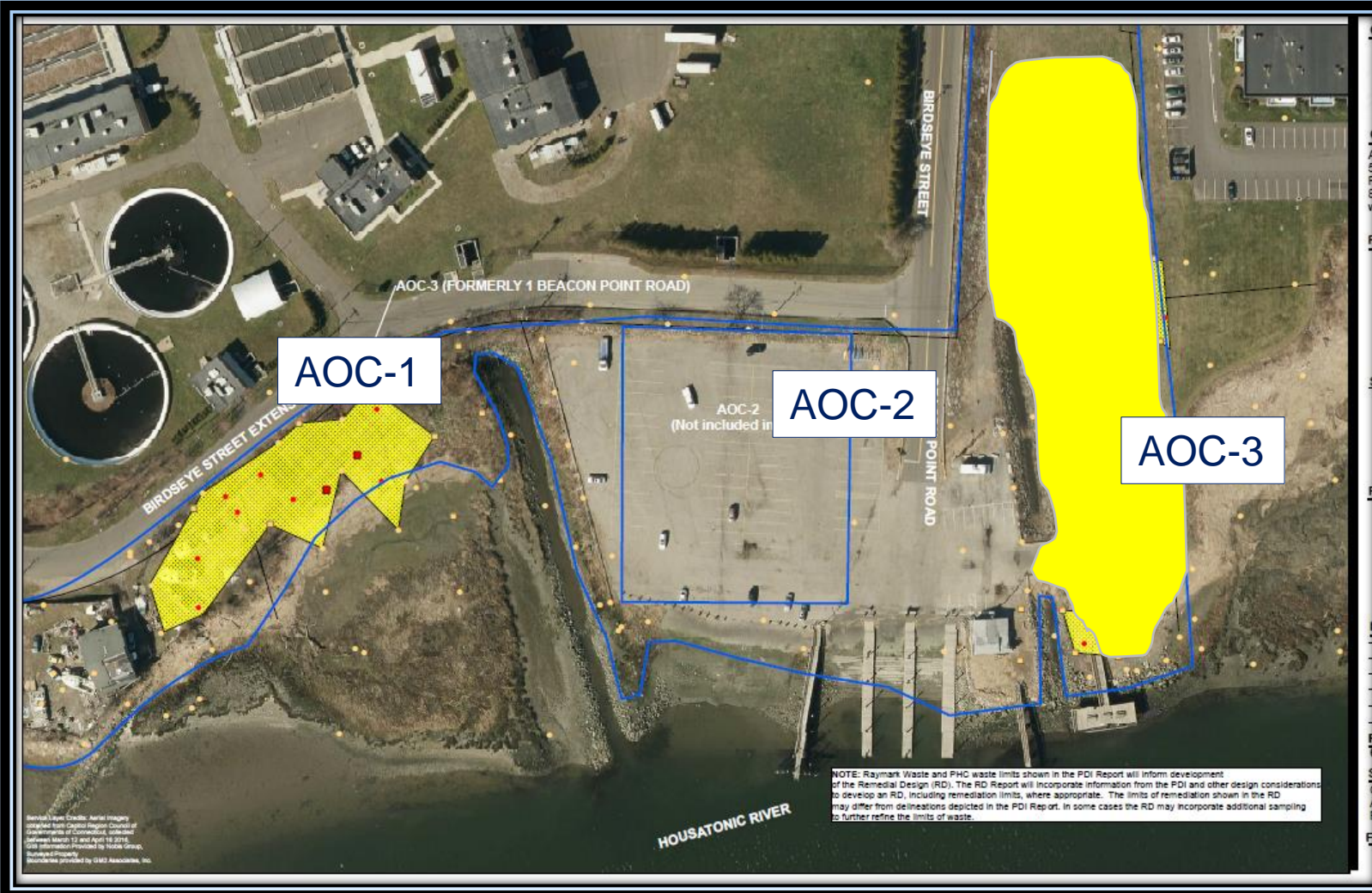
PHC volumes in RED font

Remaining OU6 Properties

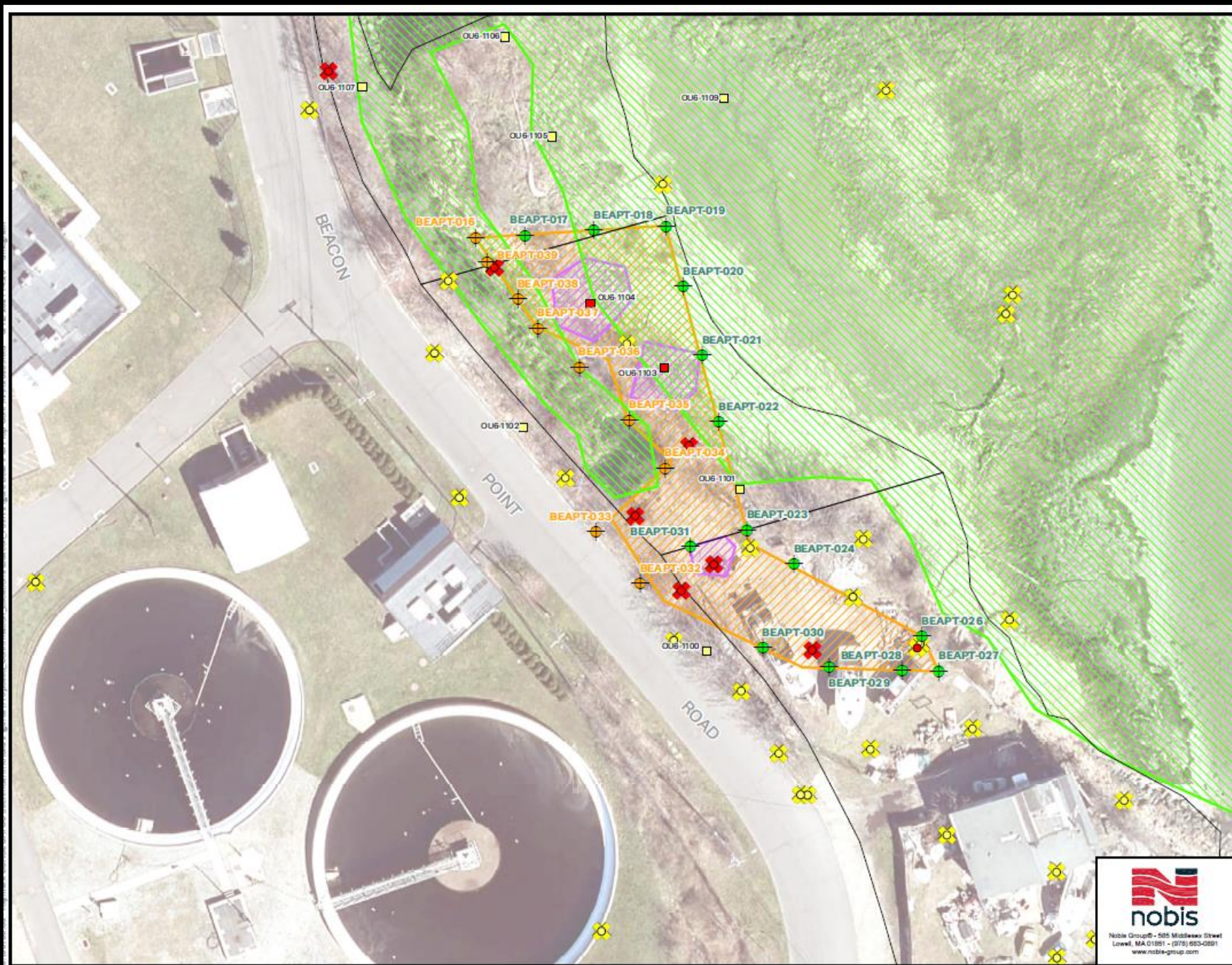
17 properties completed

9 properties remaining

Beacon Point Area



- 3 Areas of Concern (AOCs)
 - AOC-1: Town and Private Boat Yard
 - AOC-2: 2011 ROD/ELUR in place
 - AOC-3: Town and Condo
- RW: 11,000 yds (700 trucks)
- PHC: 250 yds (20 trucks)
- AOC-1: Aug to Oct 2022
- AOC-3: Jan to April 2023



Note:
 Raymark Waste and Non-Raymark Waste borings, and RW Areas from the Remedial Design Drawings and Pre-Design Investigation.

Property boundaries are derived from the Remedial Design Drawings.

Historical Samples 0-4' include samples collected from the following intervals: 0-4' bgs, 1-4' bgs, 2-4' bgs, 1-3' bgs, 2-3' bgs, and 3-4' bgs.

Historical Samples 0-2' include samples collected from less than or equal to 2' bgs.

Raymark Waste designation in historical samples are based on exceeding the Raymark Waste Criteria.

Legend

- Proposed Confirmation Boring
- ⊕ Post Construction Confirmation Sample
- AECOM PDI Samples**
- Raymark Waste
- Non-Raymark Waste
- Historical Samples 0-4'**
- Raymark Waste
- Non-Raymark Waste
- Historical Samples 0-2'**
- ✖ Raymark Waste
- ✖ Non-Raymark Waste
- Approx. Survey Boundaries
- Operable Unit 8
- PHC Waste Limits
- Raymark Waste Limits

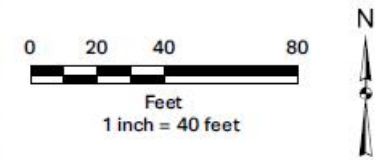
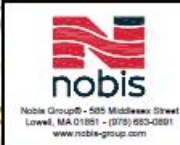


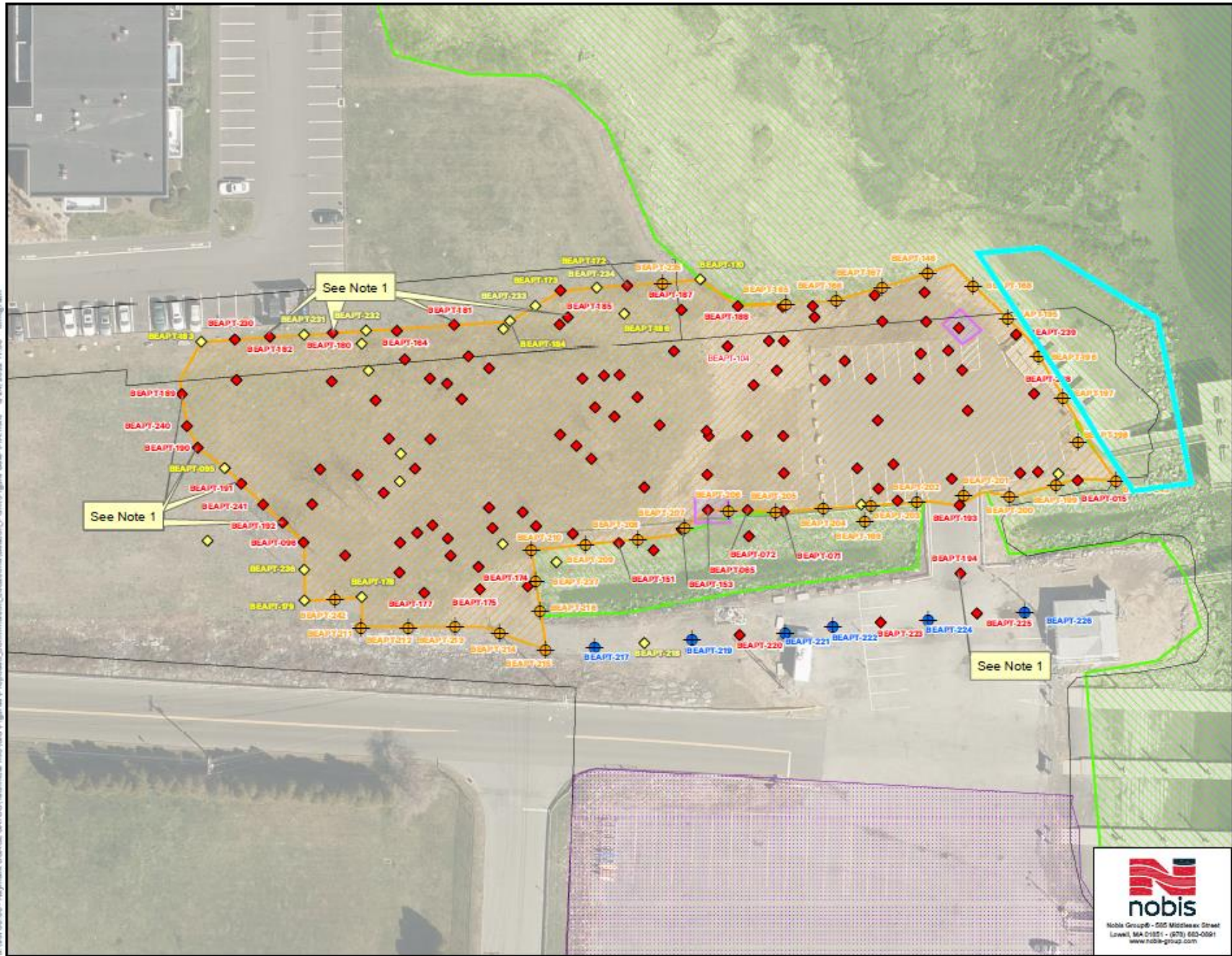
FIGURE BEAPT-1B

PROPOSED CONFIRMATION LOCATIONS
 BEACON POINT & 1 BEACON POINT ROAD
 RAYMARK SUPERFUND SITE
 STRATFORD, CONNECTICUT



PREPARED BY: DFM	CHECKED BY: AR
PROJECT NO. 95700.00	DATE: JAN 2021

AOC-1



Note:
 USACE evaluation of sample results determined that sample did not meet all thresholds for step-out criteria and further step-out sample collection is not required.

Raymark Waste and Non-Raymark Waste borings, and RW Areas from the Remedial Design Drawings and Pre-Design Investigation.

Property boundaries are derived from the Remedial Design Drawings.

Historical Samples 0-4' Include samples collected from the following Intervals: 0-4' bgs, 1-4' bgs, 2-4' bgs, 1-3' bgs, 2-3' bgs, and 3-4' bgs.

Historical Samples 0-2' Include samples collected from less than or equal to 2' bgs.

Raymark Waste designation in historical samples are based on exceeding the Raymark Waste Criteria.

Legend

- Post Construction Confirmation Sample
- Sample to be held at the laboratory
- Confirmation Stepout Sample Required?**
- Yes
- No
- Approx. Survey Boundaries
- ELUR Boundary
- Raymark Waste Limits
- PHC
- Operable Unit 8

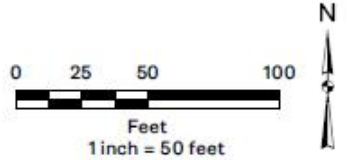


FIGURE BEAPT-1A

PROPOSED CONFIRMATION LOCATIONS
 BEACON POINT & 1 BEACON POINT ROAD
 RAYMARK SUPERFUND SITE
 STRATFORD, CONNECTICUT

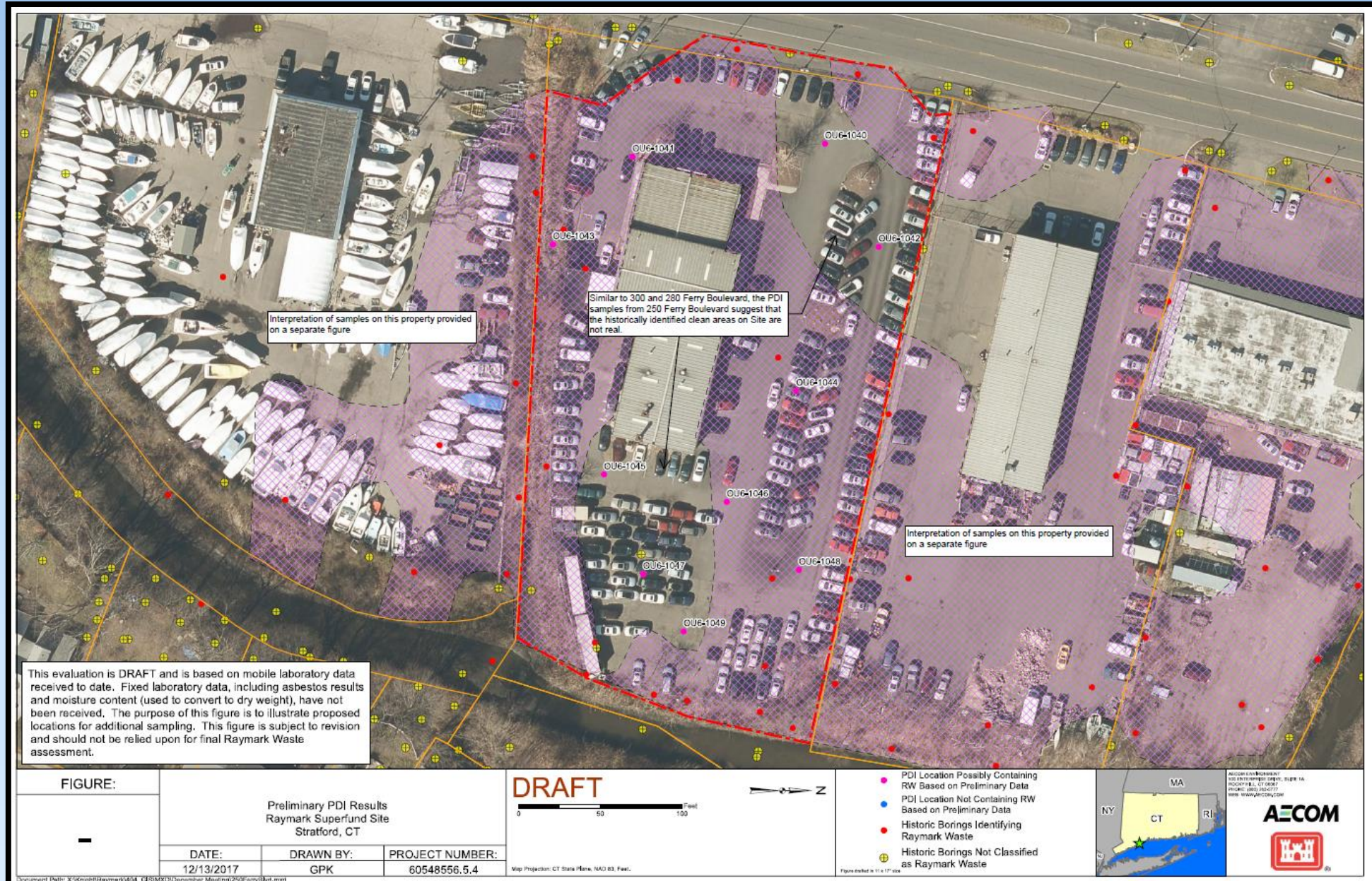


PREPARED BY: JTS	CHECKED BY: AR
PROJECT NO. 95700.00	DATE: MAY 2022

AOC-3

OU6 Properties Not Yet Scheduled

Car Dealerships/EPA Office



Lockwood



- Note:**
1. Raymark Waste and Non-Raymark Waste borings, and RW Areas from Seed TO Spec Figures.
 2. Raymark Waste and Non-Raymark Waste borings, and RW Areas from the Remedial Design Drawings and Pre-Design Investigation.
 3. Property boundaries are derived from the Remedial Design Drawings.
 4. Raymark Waste designation in historical samples are based on the Raymark Waste Criteria.

Legend

- Confirmation Boring Type**
- ◆ To be collected
- AECOM PDI Samples**
- Raymark Waste
 - Non-Raymark Fill
- Historic Samples 0-4'**
- Raymark Waste
 - Non-Raymark Fill
- PHC Waste Limits**
- ▨ PHC Waste Limits
 - ▨ Raymark Waste Limits

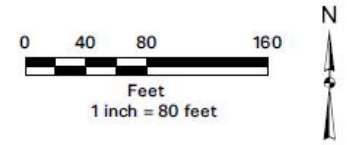
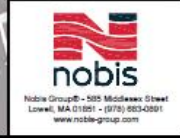


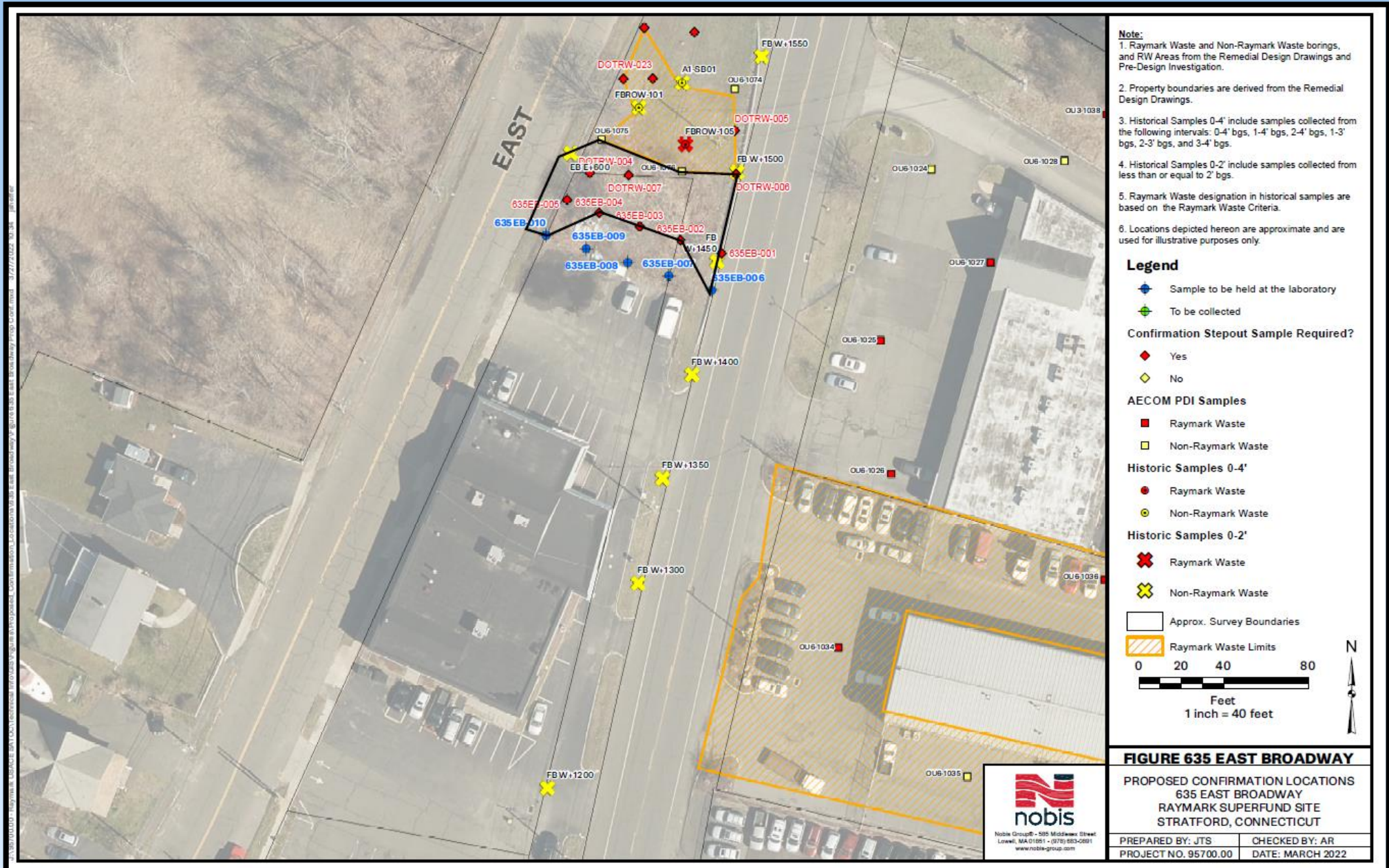
FIGURE 1

PROPOSED SAMPLE LOCATIONS
 LOCKWOOD AVENUE
 RAYMARK SUPERFUND SITE
 STRATFORD, CONNECTICUT

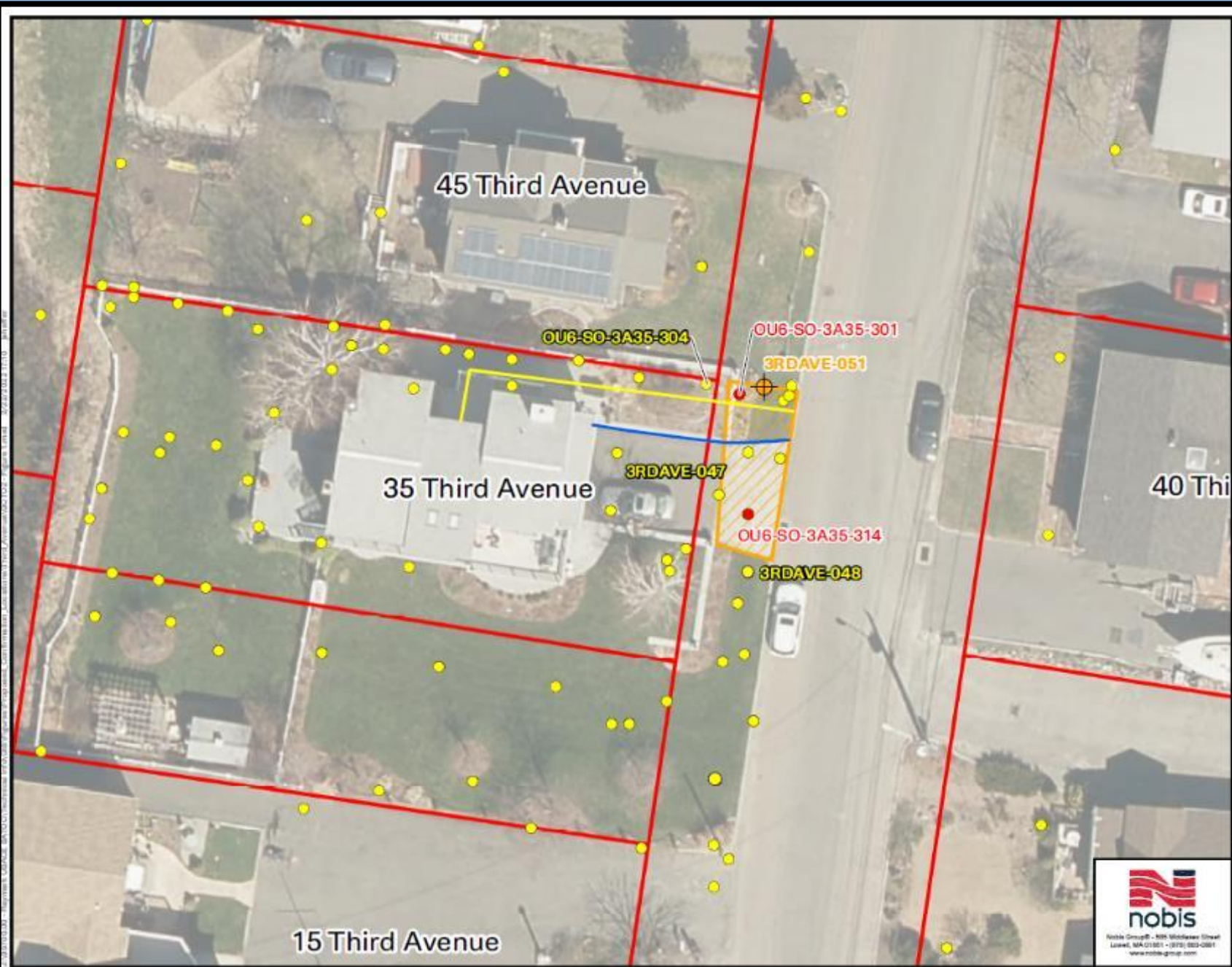


PREPARED BY: JTS	CHECKED BY: AR
PROJECT NO. 95700.00	DATE: NOVEMBER 2021

635 Ferry Boulevard



Third Ave



- Note:**
1. USACE evaluation of sample results determined that sample did not meet all thresholds for step-out criteria and further step-out sample collection is not required.
 2. USACE evaluation of sample results determined that sample met all thresholds for step-out criteria and further step-out sample collection is required.
 3. Raymark Waste and Non-Raymark Waste borings, and RW Areas from the Remedial Design Drawings and Pre-Design Investigation.
 4. Property boundaries are derived from the Remedial Design Drawings.
 5. According to FEMA's National Flood Hazard Layer, the property 35 Third Avenue and parcels to the north, east, and south are located in the AE EL-11 Floodplain. Parcels to the west are located in the VE EL-14 Floodplain.
 6. Historical Samples 0-4' include samples collected from the following intervals: 0-4' bgs, 1-4' bgs, 2-4' bgs, 1-3' bgs, 2-3' bgs, and 3-4' bgs.
 7. Raymark Waste designation in historical samples are based on exceeding the Raymark Waste Criteria.
 8. Locations of site features depicted hereon are approximate and given for illustrative purposes only.

Legend

- Proposed Confirmation Boring
 - Post Construction Confirmation Sample
- Raymark Waste detected? (0-4')
 - Yes
 - No
- Historical Samples 0-4'
 - Raymark Waste
 - Non-Raymark Waste
- Water Line
- Natural Gas Line
- Raymark Waste Limits
- Stratford Parcels

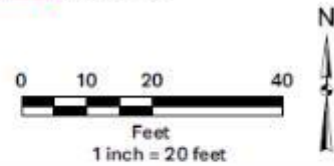


FIGURE 1 - 35 THIRD AVE 0-4FT BGS

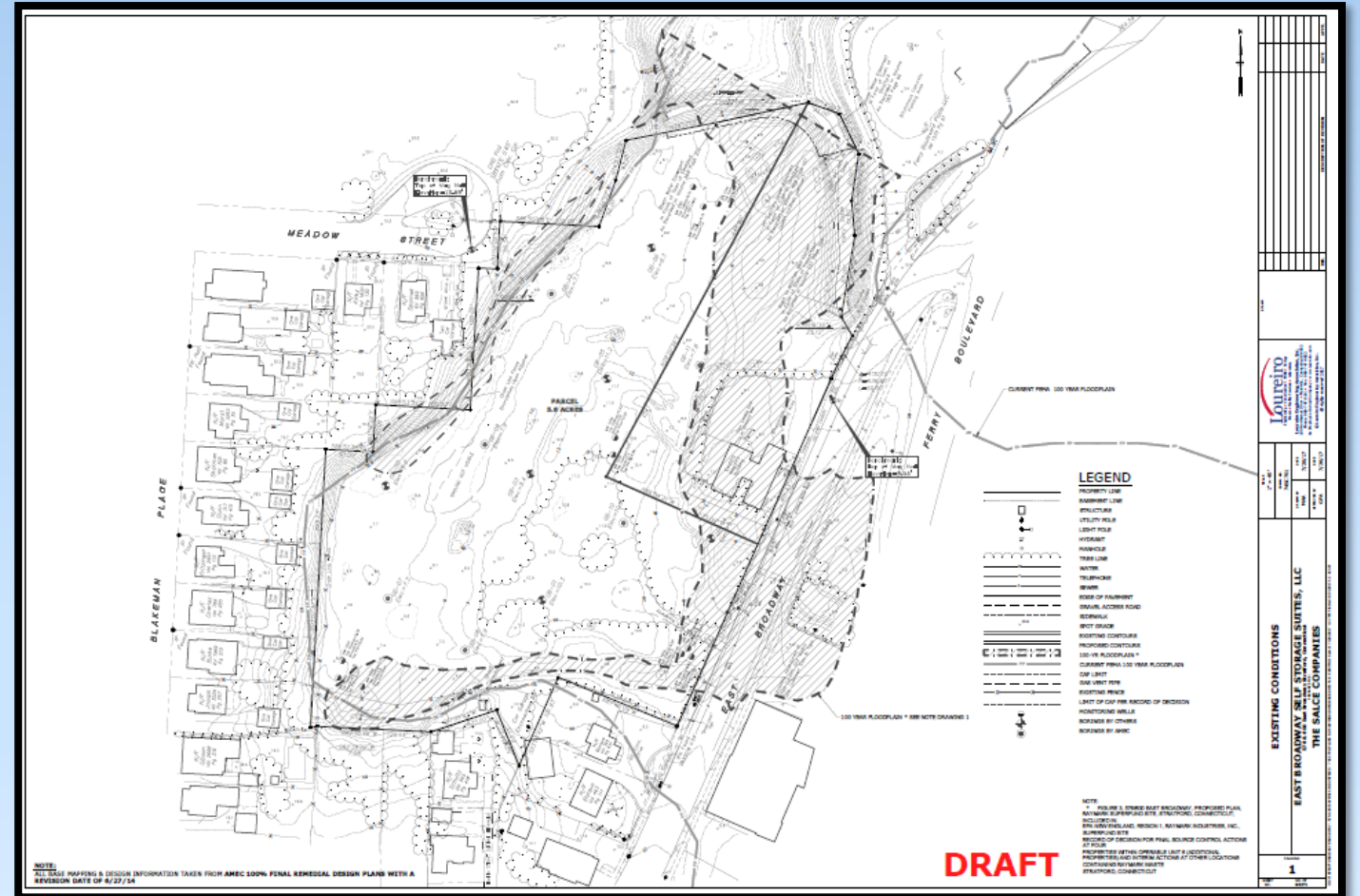


GCTO2
 35 THIRD AVENUE
 RAYMARK SUPERFUND SITE
 STRATFORD, CONNECTICUT

PREPARED BY: JTS	CHECKED BY: AR
PROJECT NO. 95700.00	DATE: FEBRUARY 2022

Morgan Francis Overview

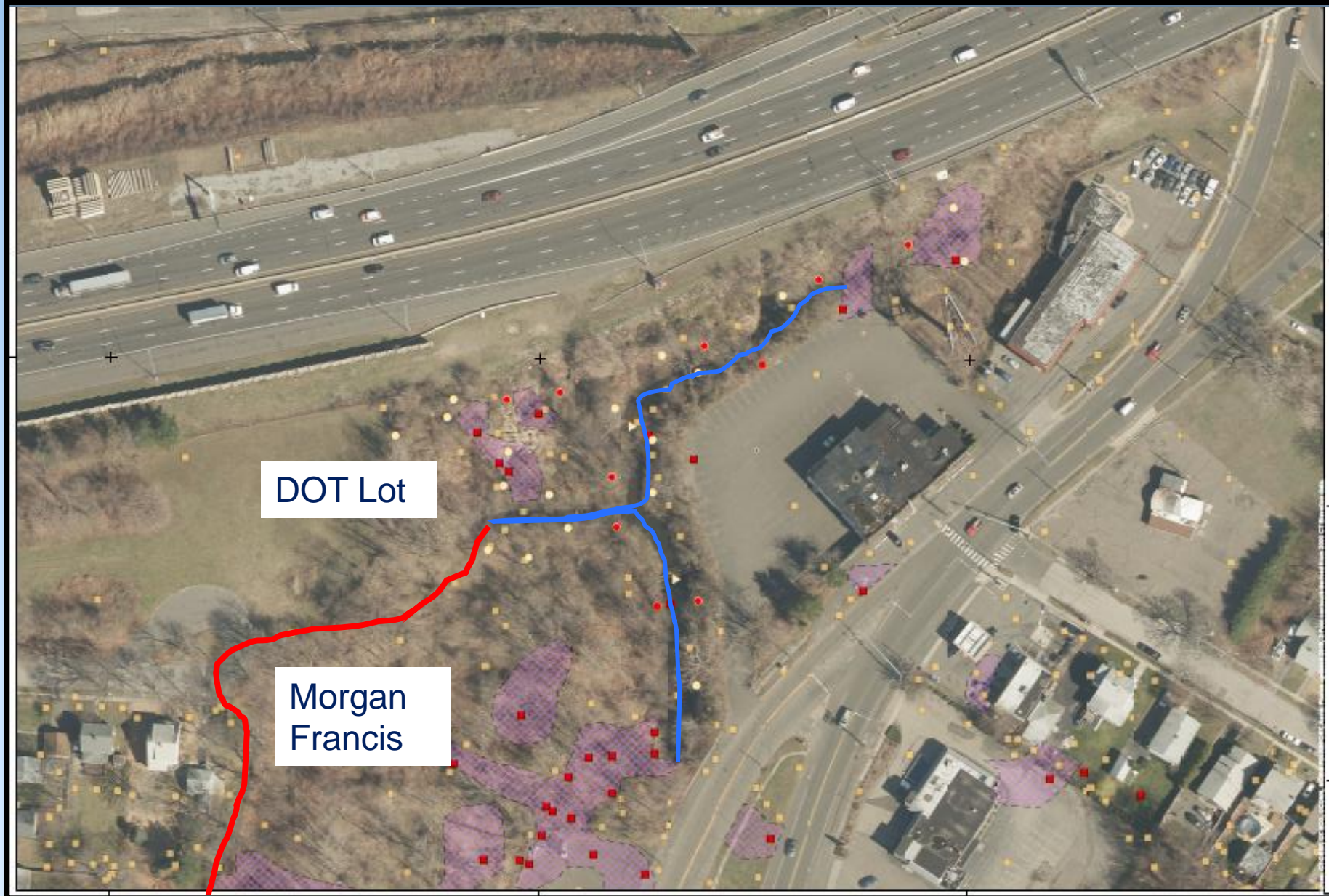
576/600 East Broadway



OU6 - Morgan Francis Plan

- 2011 Record of Decision
- Modify cap design
- Major changes:
 - Design cap for passive reuse - soccer or lacrosse fields
 - Consolidate Raymark Waste from abutting OU6 and OU3 properties (DOT Lot and Uppermost Ferry Creek
 - This will eliminate a couple of hundred trucks going to OU4
 - Public outreach to Blakeman Place, East Broadway this Fall

Upper Ferry Creek and DOT Lot



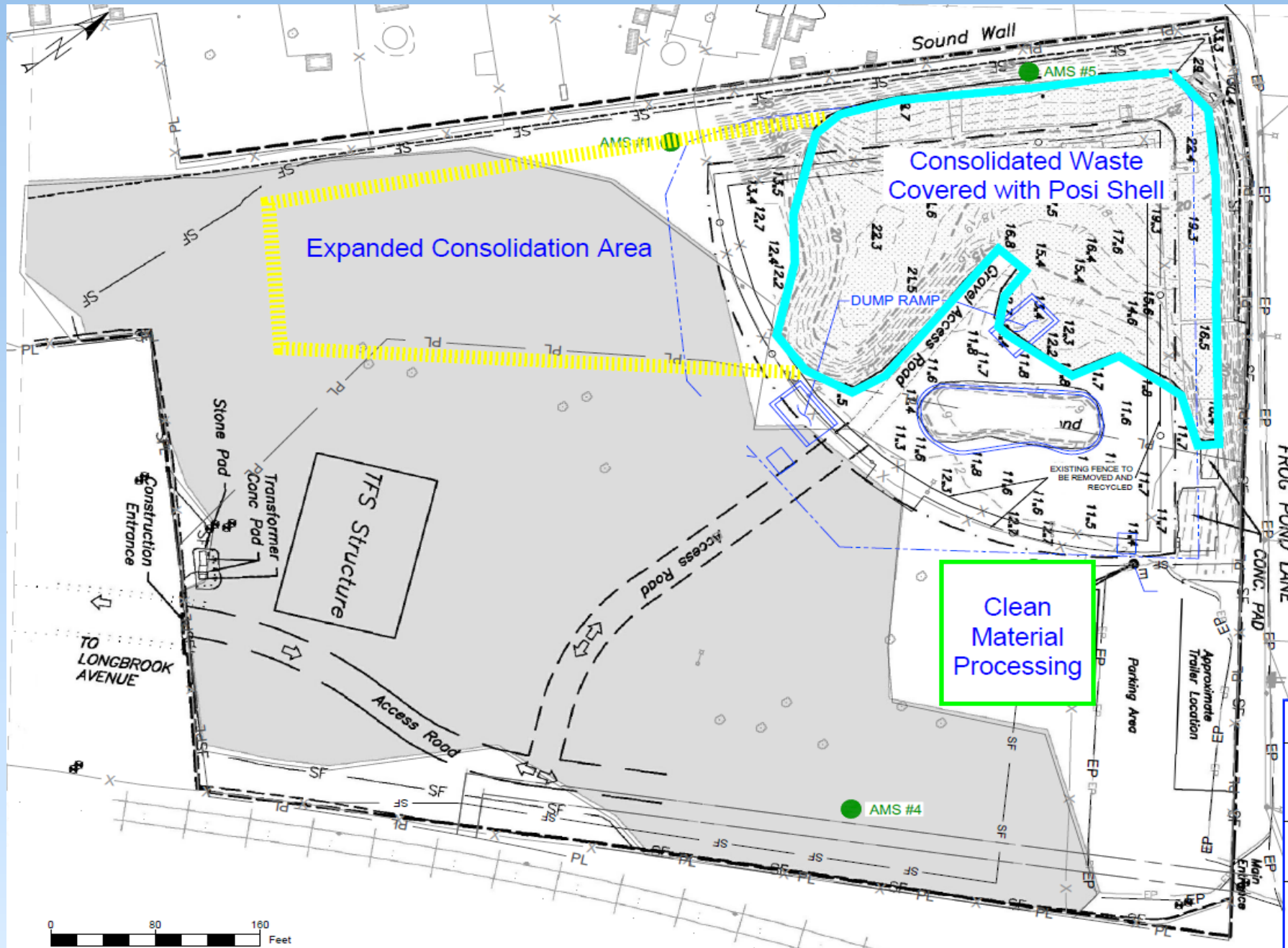
OU4 Updates

OU4 Ballfield Work Completed or Ongoing Since May



- Approximately 32,000 CY of material has been consolidated, compacted and covered to date
- Posi-Shell cover has been applied on all previously imported Raymark Waste at the Ballfield
- Stormwater conveyance line construction underway. Pumpstation contract has been awarded
- Former Ballfield / OU4 site and cap design complete
- 5 perimeter air monitors at OU4 are operating daily
- Second live stream camera view available

OU4 Consolidation Area



- Approximately 32,000 CY of material has been consolidated, compacted and covered
- Active consolidation accepting material from 230 Ferry Blvd.
- Clean material processing area located off active consolidation zone
- Posi-shell or approved cover placed over waste at end of each day



OU4
Consolidation
Area

OU4 Stormwater System

Stormwater System Upgrades



Conveyance Line – Open Channel



Open Channel Excavation

- Remove unsuitable soft and organic material
- Backfill with crushed stone and geotextile



Channel Armoring and Restoration

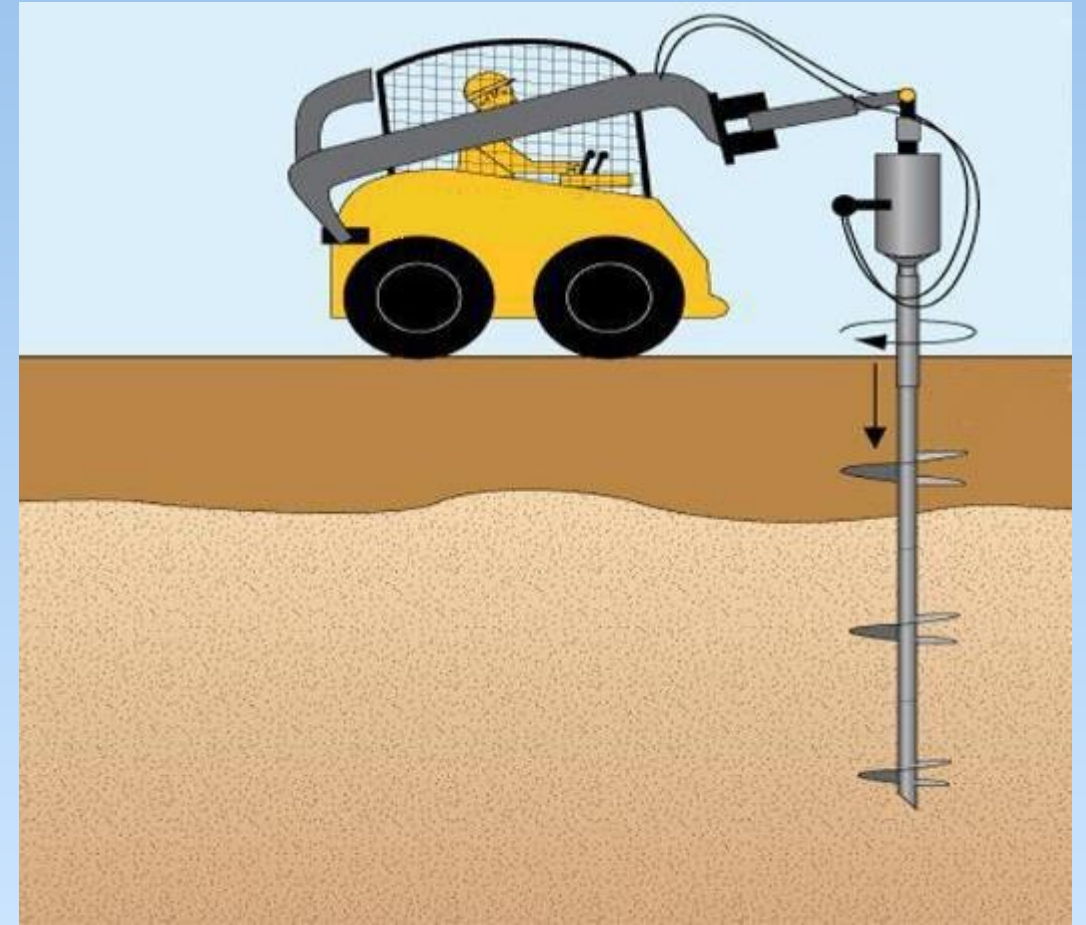
- Place Articulating Concrete Block (ACB)
- Restore native plants and shrubs along bank

Conveyance Line – Box Culvert



Box Culvert

- 3' x 5' at OU4 to 3' x 10' at Open Channel
- Carry clean stormwater from OU4



Helical Pile installation

- Helical piles installed to support culvert
- Piles will be rotated into place

New Pump Station

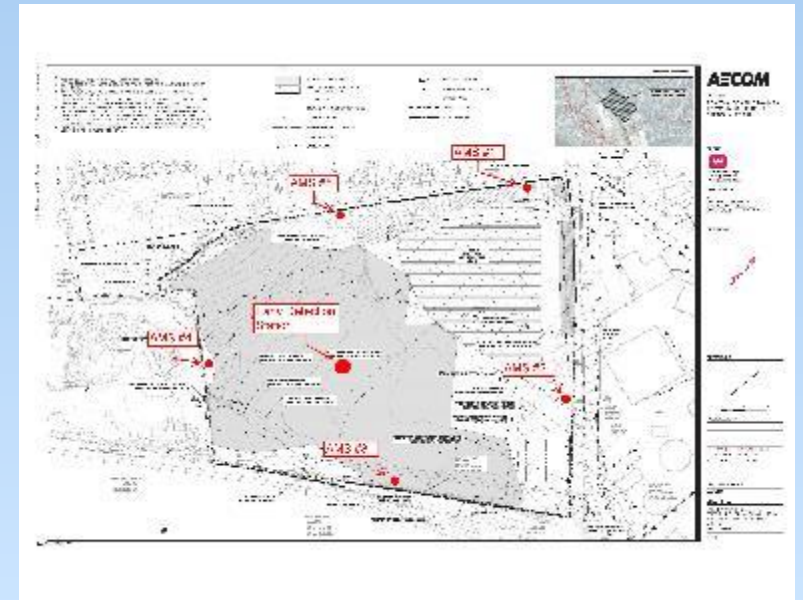
- Contract Awarded – P&S Construction
- Construction Start Expected in August
- Duration approximately 24 mo.
- 4 Axial Flow Pumps
- 200 CFS Capacity
- Operates during significant storm and high-water events
- Masonry Pumphouse



Air Monitoring

OU4 - Air Monitoring Results

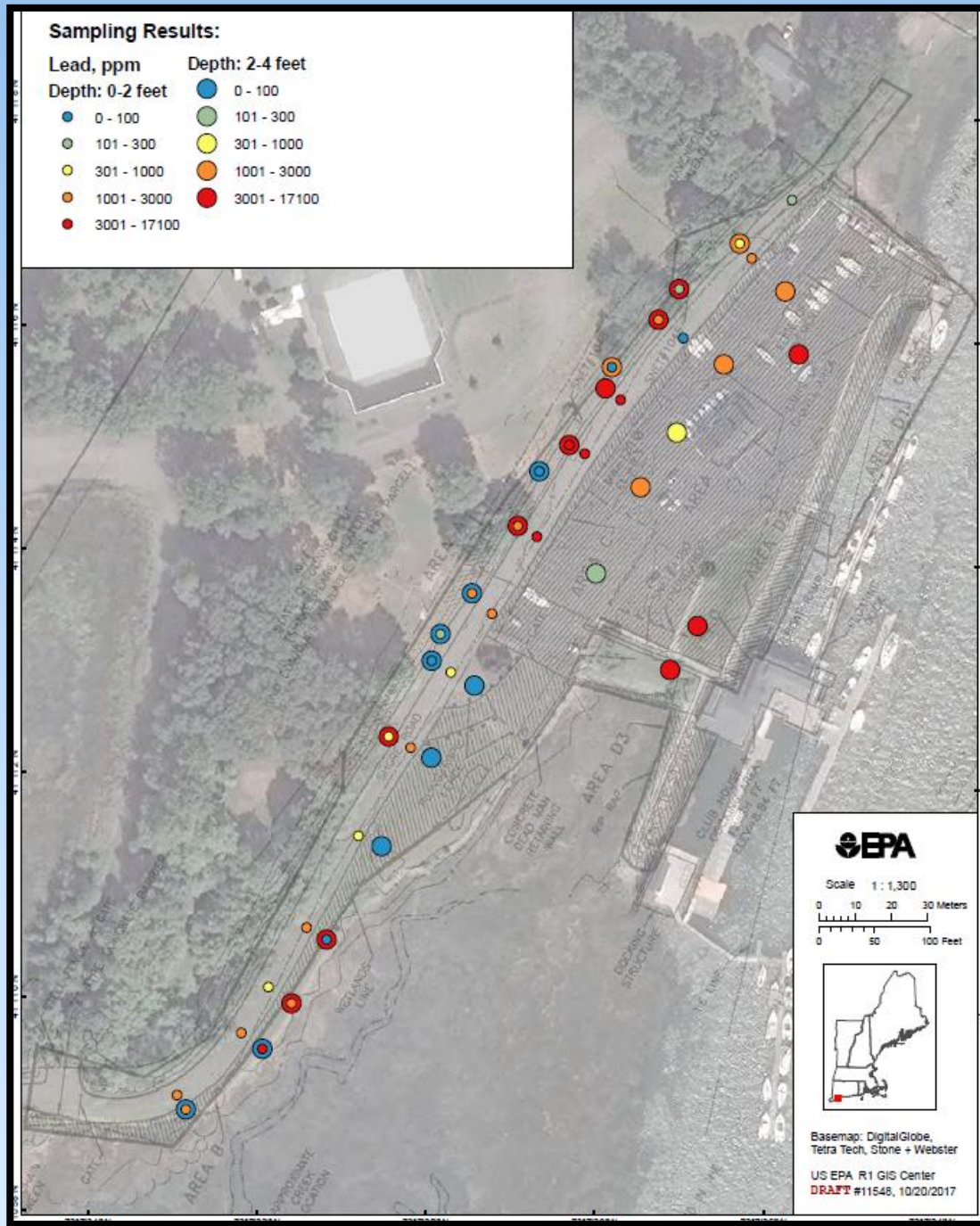
- Since 5/25/22 public meeting Daily Average Dust = 0.004 to 0.010 mg/m³
- No exceedances of the OU4 Dust Action Level criteria (0.014 mg/m³)
- All five dust meters and sample collection systems in operation
- One personnel chemical sample collection system
- No health and safety risks to workers or residents
- No chemical action levels exceeded
- Adjusting 5 meter locations as work area expands
- Adding new meter in middle of OU4 (early detection and monitor worker exposure)
- Better representation of perimeter and interior work area
- Posting Weekly Air Monitoring, Chemical Data and Vibration Monitoring Reports on Town Raymark website



OU6 - Air Monitoring Results

- Excavating soil at Hitchcock Marina (230 Ferry Blvd) since 6/20/22.
- Daily Average Dust Measurements 0.001 to 0.012 mg/m³
- No exceedances of OU6 Dust Action Level criteria (0.019 mg/m³)
- Three dust meters and sample collection systems in operation
- One personnel chemical sample collection system
- No health and safety risks to workers or residents
- No chemical action levels exceeded
- Chemical analysis found wood fibers, no asbestos in 7/13/22 dust sample.
- Dedicated water truck at OU6 to manage dust
- Posting Weekly Air Monitoring Reports, Chemical Data, and Vibration Monitoring Reports on Town Website





Shore Road?

Remaining Properties/Current Schedule



- OU6

- 2022 Summer/Fall - Marine, Beacon Point AOC-1, Wiz Dealership
- 2023 Winter/Spring - Beacon Point AOC-3
- 2023 Fall – Blasius Dealership
- 2023 Fall/last: Former Ski Shop/EPA Office
- TO BE SCHEDULED: 3rd Ave, 635 East Broadway, Lockwood
- Shore Road?

- OU3

- 2023: Ferry Creek (East Broadway to Broad St bridge)

- OU4

- 2024: Final grading and construct cap. Restore.

Construct Stormwater And Pump Station



Morgan Francis Design and Start Remedial Action



OU5, OU7, OU8 and OU9

Next CAG Meeting September 28 at 6:30pm

For more information about the Raymark Superfund Site, including copies of presentation slides, documents and meeting minutes, please visit: stratfordct.gov/raymark

Thank you for joining!

- Visit stratfordct.gov/Raymark for updates, contact information, air monitoring results, meeting dates, meeting recordings and Powerpoint slides
- Email Alivia at: acoleman@townofstratford.com with further questions, concerns, feedback or to sign up for email distribution list.