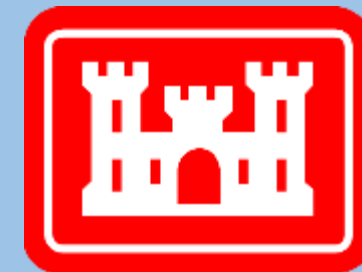


# Community Advisory Group

Raymark Industries,  
Inc. Superfund Site  
Stratford, CT

Jim DiLorenzo, EPA  
Mike Looney, USACE  
Rachel MacPhee, USACE  
Alivia Coleman, Health Dept.

March 29, 2023



**US Army Corps  
of Engineers®**

To download presentation slides visit:

**[Stratfordct.gov/Raymark](http://Stratfordct.gov/Raymark)**

# Hybrid Meeting Guidelines

## Virtual Attendees:

- Everyone will be muted throughout the presentations - please stay muted to eliminate background noise.
- Hold questions until the end of the meeting.
  - Use the chat box.
  - Mute yourself after speaking

## Everyone:

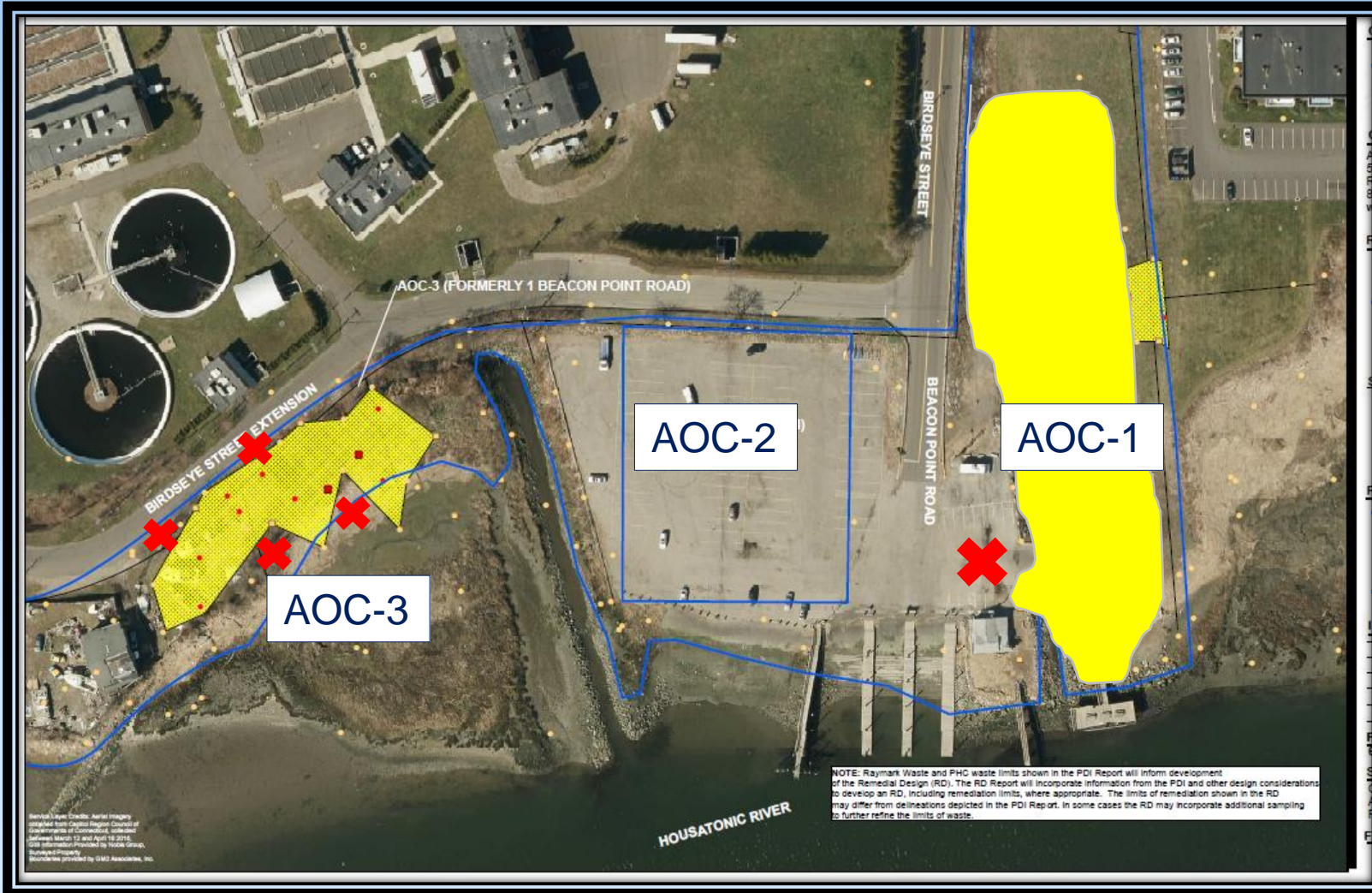
- Ask questions related to the presentation topic
- Please be respectful of time, so everyone has a chance to speak
- Be respectful and patient!
- Talk one at a time.
- **This meeting will be recorded.**

# AGENDA

- INTRODUCTIONS AND MEETING RULES
- OPERABLE UNIT 6 (OU6) UPDATES
- RAYBESTOS MEMORIAL FIELD (OU4)
- AIR MONITORING/TRAFFIC ROUTE UPDATES
- STORMWATER CONVEYANCE SYSTEM
- OVERALL PROJECT SCHEDULE

# OU6 Updates

# Beacon Point Area



## 3 Areas of Concern (AOCs)

- AOC-2: Done per 2011 ROD/ELUR
- AOC-3: Town and Private Boat Yard
- AOC-1: Town and Condo

## AOC-1/AOC-3

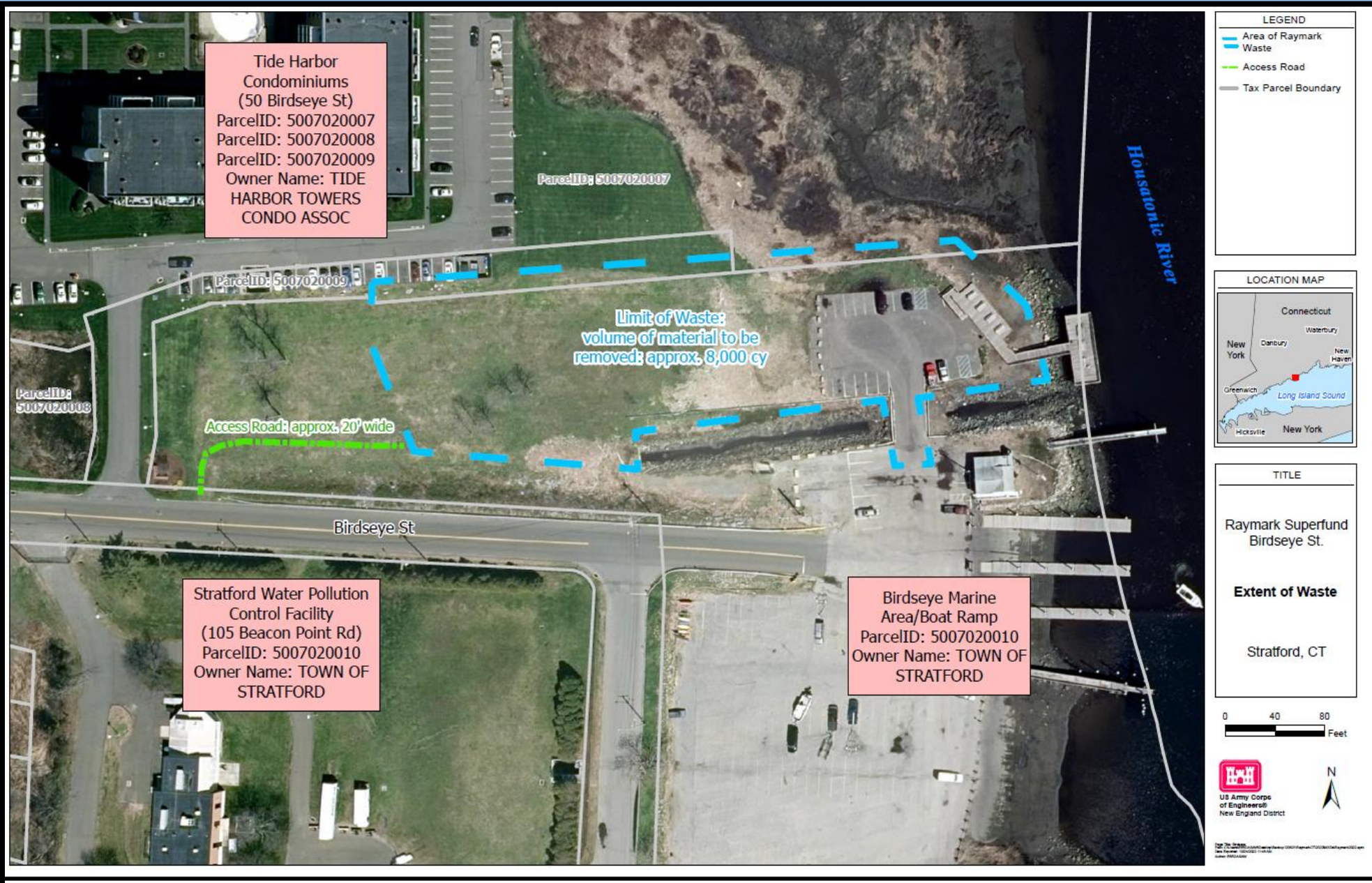
- Began Nov 27, 2022
- Excavation complete March 23

RW: 11,484 yds (925 trucks)

PHC: 457 yds (53 trucks)

✘ = stepped-out areas

# Beacon Point AOC-1



- RW: 9,095 yds (727 trucks)
- PHC: 131 yds (13 trucks)
- Recreational dock to be replaced
- Rip rap enhanced
- Parking lot to be reshaped to pull back from wetland
- Parking lot to be raised one foot re: coastal resiliency
- Reopen by Memorial Day

**LEGEND**

	LANDSCAPED RESTORATION (GRASS)
	LANDSCAPED RESTORATION (WETLAND)
	PAVEMENT RESTORATION
	COASTAL BANK RESTORATION
	GRAVEL RESTORATION
	GUARDRAIL
	WETLAND BOUNDARY
	CULVERT PIPE

**NOTES**

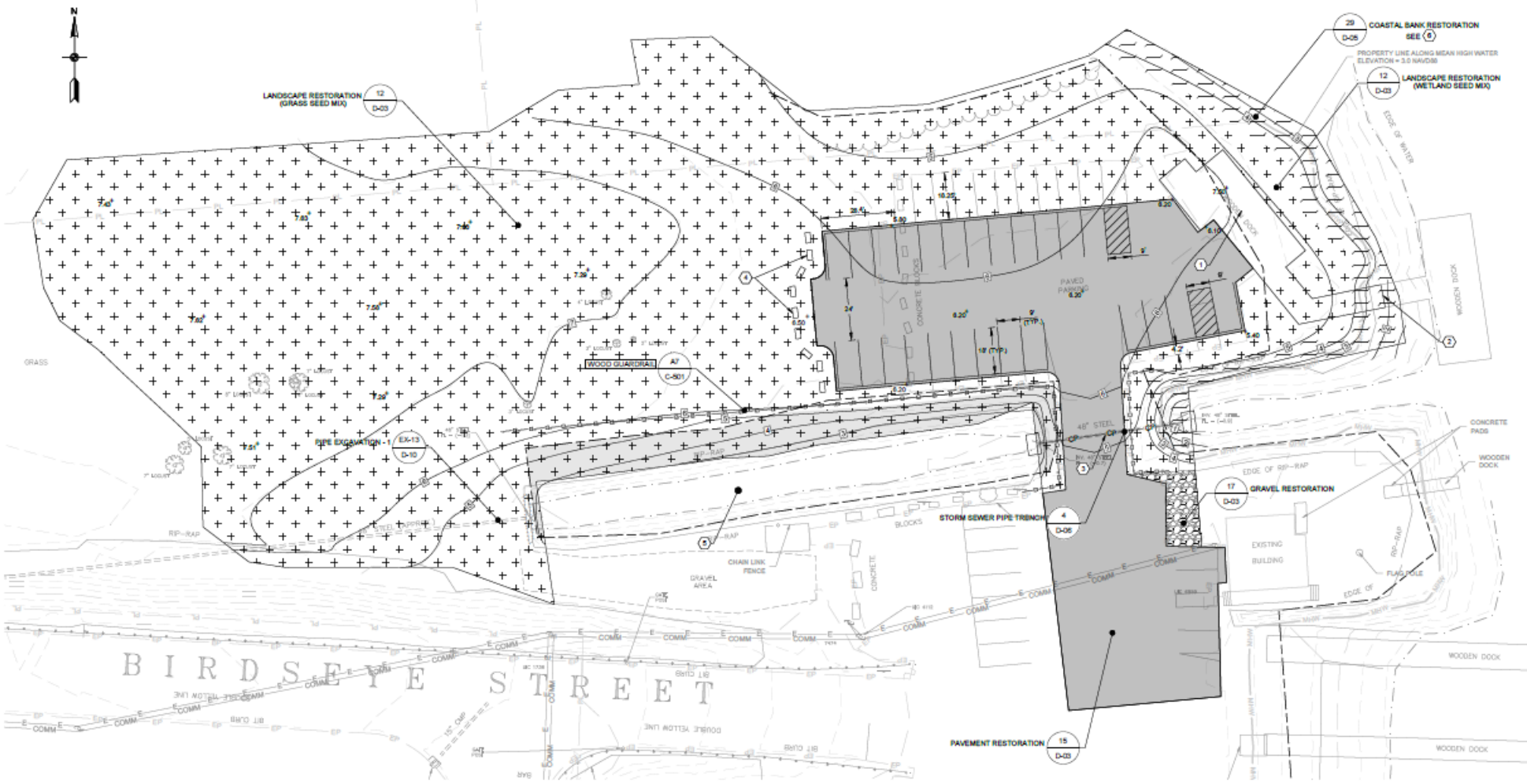
- FOR GENERAL NOTES AND TYPICAL LEGEND SEE ORIGINAL PLAN SET "REMEDIATION DESIGN DRAWINGS 04-3, 04-4, AND 04-7 SHEET 04-3. REFER TO THIS DRAWING SET FOR DETAILS NOT SHOWN ON C-501.
- RESTORATION ACTIVITIES SHALL BE IN ACCORDANCE WITH THE TASK ORDER CONTRACTUAL REQUIREMENTS.
- SITE IS SUBJECT TO INUNDATION DURING PERIODS OF HIGH TIDE. CONTRACTOR SHALL AVOID EXCAVATION DURING PEAK STORM SEASON AND SHOULD ATTEMPT TO COMPLETE CONCRETE EXCAVATION RESTORATION DURING PERIODS OF LOW TIDE.
- CONTRACTOR SHALL MAINTAIN ACCESS TO COAST GUARD BUILDING DURING REMEDIATION AND RESTORATION ACTIVITIES. CONTRACTOR SHALL COORDINATE WITH COOR ON SCHEDULE AND ACCESS.
- SHEETPILES SHALL BE REMOVED AT COMPLETION OF RESTORATION, OR AS DIRECTED BY USACE.

**KEYNOTES**

- RECONSTRUCT PICNIC AREA DECK PER DRAWINGS TITLED "IMPROVEMENTS TO THE BIRDS EYE STREET WATERFRONT FACILITY" (DATED 3-24-20) TO TOP OF FINISHED DECK ELEVATION OF 7.5 FT. CONTRACTOR SHALL PROVIDE A SUBMITTAL DETAILING DECK CONNECTION TO EXISTING PILES FOR GOVERNMENT REVIEW AND APPROVAL.
- TI IN EXISTING FISHING PIER RAMP TO NEW PICNIC AREA DECK AT ELEVATION 7.5 FT. CONTRACTOR SHALL PROVIDE A SUBMITTAL DETAILING DECK CONNECTION TO EXISTING RAMP FOR GOVERNMENT REVIEW AND APPROVAL.
- INSTALL NEW 48" HOPE CULVERT WITH 9" OF RR-PPR-OUTLET PROTECTION ON EACH END. SEE DETAIL A1 ON C-501.
- RESET CONCRETE BLOCKS ALONG EDGE OF NEW PAVEMENT (TYP. OF R).
- UPON MOBILIZATION, CONTRACTOR TO DETERMINE IF WASTE IS PRESENT IN DITCH. IF WASTE IS FOUND, CONTRACTOR SHALL REMOVE AND REFINISH DITCH IN KIND.

- ⑤ ADD 12-36 IN. DIA. BOULDERS TO EDGE OF COASTAL BANK RESTORATION TO ENHANCE. BOULDER LAYER SHALL EXTEND 4 FEET WIDE AND 3 FEET DEEP.

**BACKCHECK COPY  
NOT FOR CONSTRUCTION**



**A1 GRADING AND RESTORATION PLAN**  
SCALE: 1" = 20'



MARK	DESCRIPTION	DATE

<b>PROJECT NAME:</b> NO. 105166 - 000 SULLY PARK SULLY PARK MARINA	<b>CONTRACT NO.:</b> 05030021	<b>DRAWING CODE:</b> 05030021	<b>SHEET 2 OF 3</b>
<b>DESIGNED BY:</b> L. W. BAKER	<b>CHECKED BY:</b> L. W. BAKER	<b>SCALE:</b> AS SHOWN	
<b>APPROVED BY:</b> L. W. BAKER	<b>CHECKED BY:</b> L. W. BAKER		

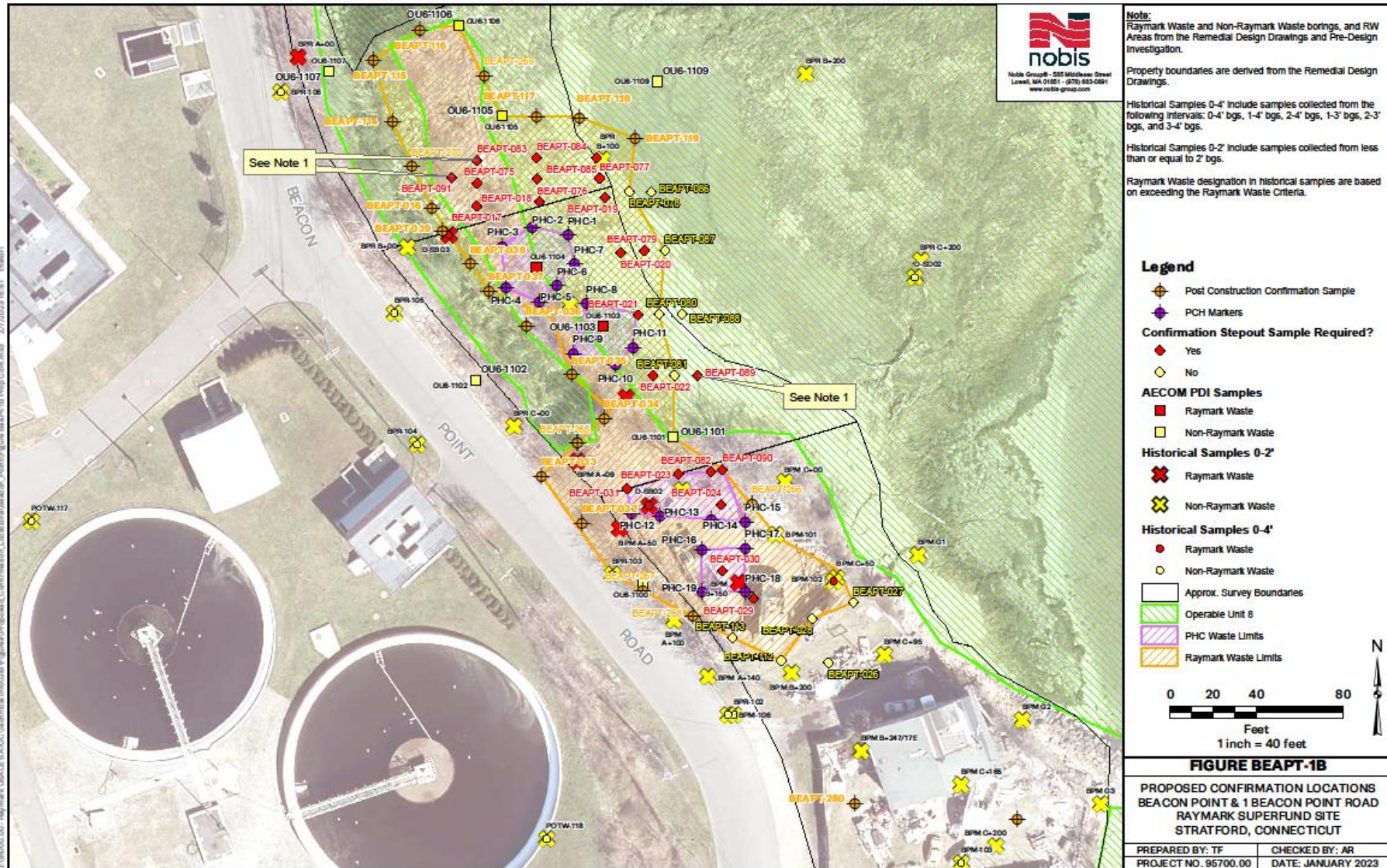
U.S. ARMY CORPS OF ENGINEERS  
 NEW ENGLAND DISTRICT  
 885 BRIMLEY ROAD  
 CONCORD, MA 01742





AOC-1  
March 6<sup>th</sup>

# Beacon Point AOC-3



- RW: 2,389 yds (198 trucks)
- PHC: 326 yds (40 trucks)
- Hurricane barrier replaced
- Rip rap enhanced



AOC-3  
February 9<sup>th</sup>



AOC-3  
March 15<sup>th</sup>

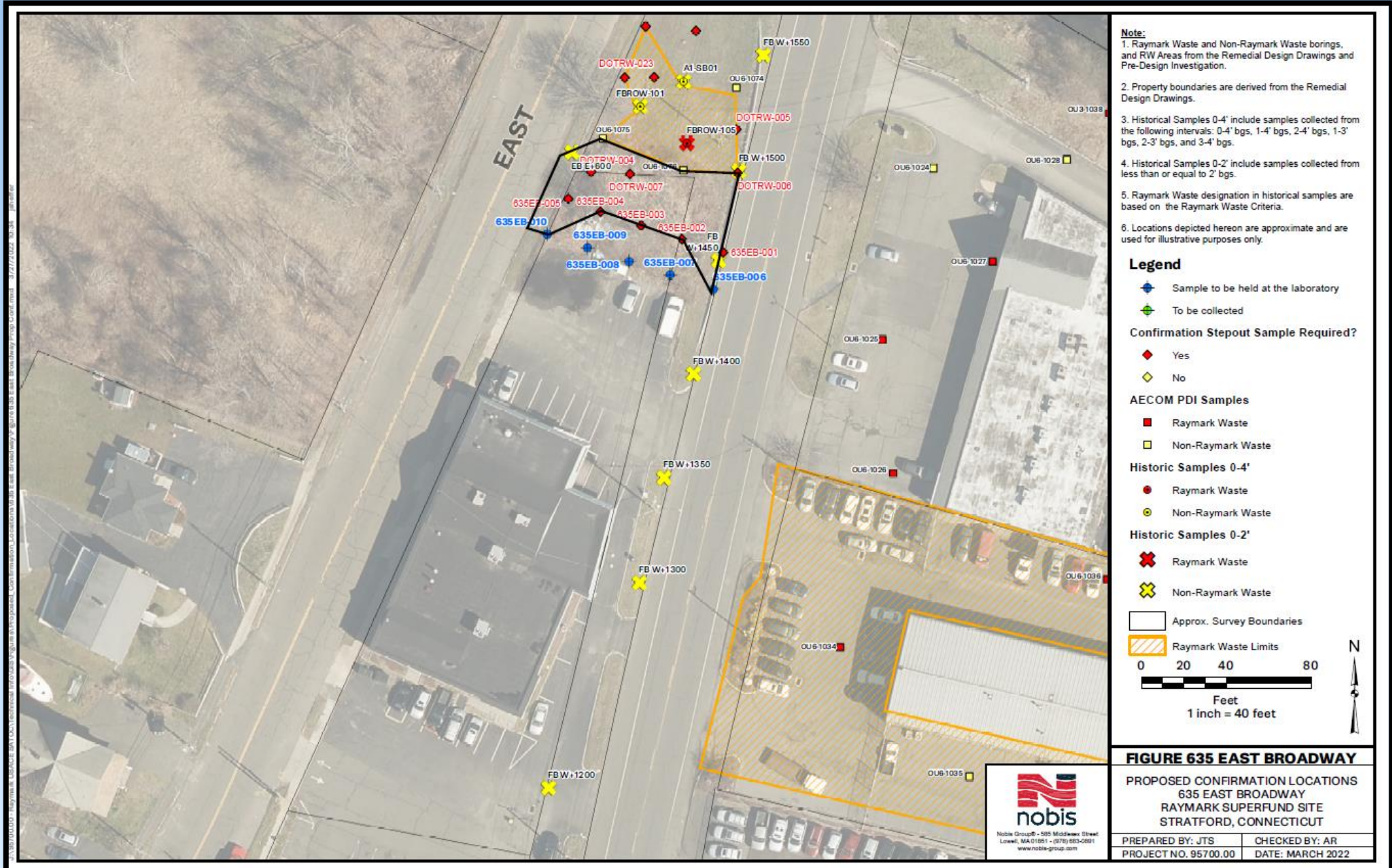
OU6 Area	Location	Excavation Dates	Volume (cy)	Truck Trips	Properties	Notes
Glyne Manufacturing	380 East Main	Sept 16 -17, 2020	51.70	4	1	Phase 1 ELUR needed
Karate Studio	190 Ferry Boulevard	Dec 2 - 10, 2020	87.31	10	1	Phase 1 ELUR needed Not in 2016 ROD
Liquor Store	200 Ferry Boulevard	Dec 2 - 10, 2020	481.83	64	1	Phase 1 ELUR needed
DOT ROW along 190/200 Ferry Blvd	190/200 Ferry Boulevard ROW	Dec 2 - 10, 2020	109.30	11	1	Phase 1 ELUR needed Not in 2016 ROD
DOT Exit 33	Barnum Ave	Jan 19 – 20, 2021	345.57	19	1	DOT via Haul Road Not in 2016 ROD
Ashcroft (front), Dry Cleaner and Hair Salon	250, 304 and 340 East Main Street	Feb 16 – April 19, 2021	2,785.3	251	3	Phase 1 ELUR needed
			794.60	60	3	To Emelle, AI
302/350 East Main Street	302/350 East Main Street	Sept 15 - 16, 2021	127	9	2	Phase 2 ELUR needed Not in 2016 ROD
DOT ROW	Ferry Blvd and East Broadway	Sept 20 to Oct 1, 2021	430	47	1	Phase 2
		Supp on March 31, 2022	48	6		
171 Ferry Blvd	Snaxx Plus Convenience Store	October 4 to 19, 2021	389	41	1	Phase 2 ELUR needed Not in 2016 ROD
Ashcroft Rear	250 East Main Street	June 9 to Nov 3, 2021	9,281	745	1	Phase 2 ELUR needed Not in 2016 ROD
			377	35	1	To FTS/bind lead
Wooster Park	Quail Street	Nov 9, 2021 to Jan 5, 2022	4,872	433	1	Phase 2 ELUR needed
			130	15	1	To FTS/bind lead
Vacant Lots	Behind 326 FB	Jan 18 to May 11, 2022	9,622	905	2	Phase 2 ELUR needed
			1,362	121	2	To FTS/bind lead
Hitchcock Marine	230 Ferry Blvd	June 13 to July 27, 2022	4,974	457	1	Phase 3 ELUR needed Septic to sewer replacement
			715	72	1	To FTS/bind lead
Wiz Auto	250 Ferry Blvd	Sept 21 to Nov 22, 2022	7,897	687	1	Phase 3 ELUR needed
			1,818	161	1	To FTS/bind lead
Beacon Point AOC-1	Town/Condo	Nov 27, 2022 to xxx	9,095	727	1	Phase 3 ELUR needed
			131	13	1	
Beacon Point AOC-3	Town/Boat Yard	Jan 16 to xxx	2,389	191	1	Phase 3 ELUR needed
			326	52	1	
TOTALS TO DATE =		Raymark Waste	52,597	4,486	20	
		PHC Waste	5,654	529	10	

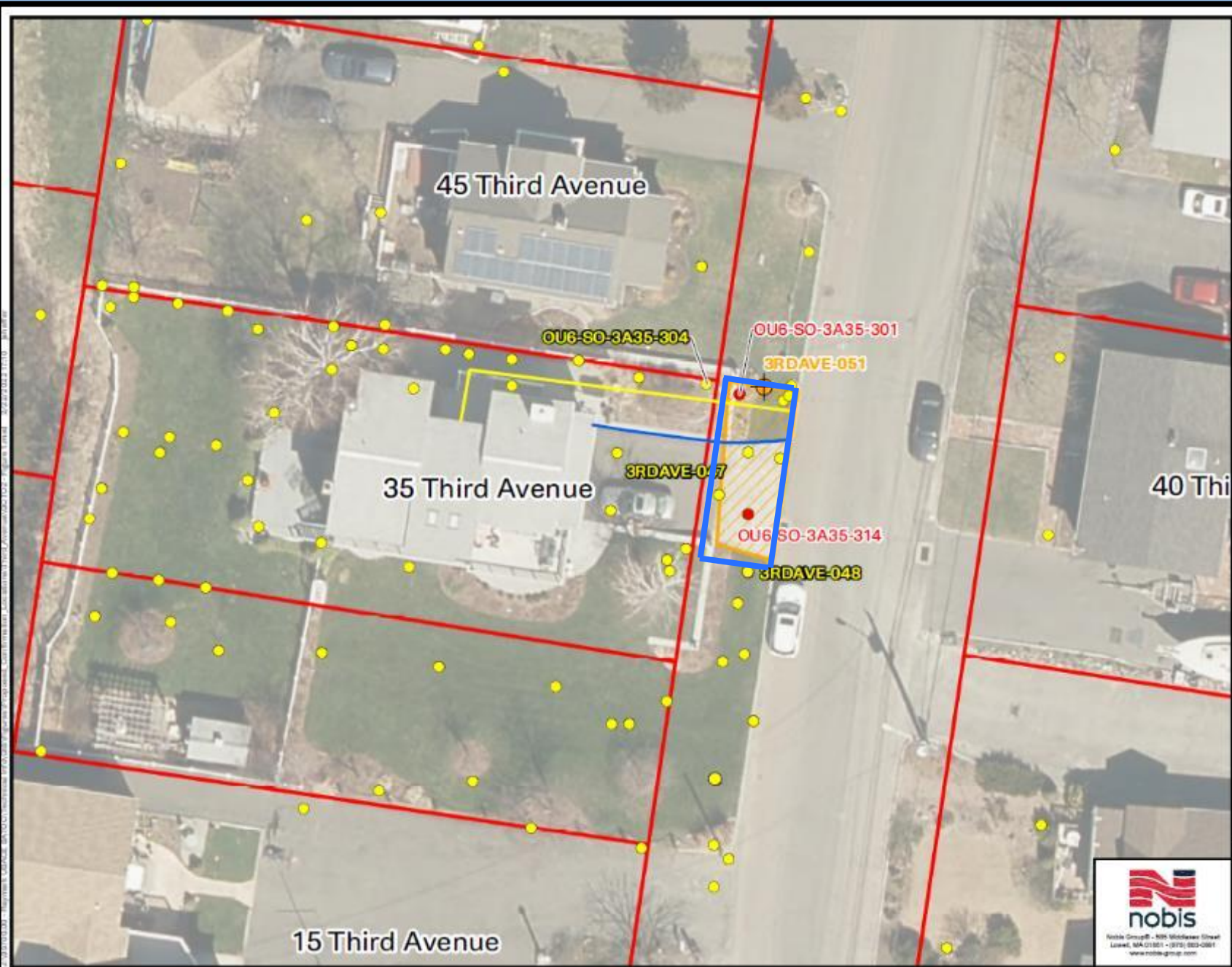
# OU6 Remediation Tracking Table

PHC volumes in RED font

# Remaining OU6 Properties

# 635 Ferry Boulevard (2023)

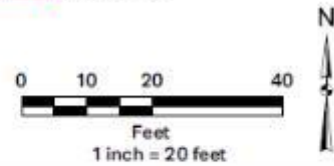




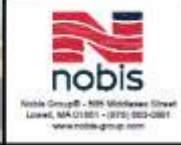
- Note:**
1. USACE evaluation of sample results determined that sample did not meet all thresholds for step-out criteria and further step-out sample collection is not required.
  2. USACE evaluation of sample results determined that sample met all thresholds for step-out criteria and further step-out sample collection is required.
  3. Raymark Waste and Non-Raymark Waste borings, and RW Areas from the Remedial Design Drawings and Pre-Design Investigation.
  4. Property boundaries are derived from the Remedial Design Drawings.
  5. According to FEMA's National Flood Hazard Layer, the property 35 Third Avenue and parcels to the north, east, and south are located in the AE EL-11 Floodplain. Parcels to the west are located in the VE EL-14 Floodplain.
  6. Historical Samples 0-4' include samples collected from the following intervals: 0-4' bgs, 1-4' bgs, 2-4' bgs, 1-3' bgs, 2-3' bgs, and 3-4' bgs.
  7. Raymark Waste designation in historical samples are based on exceeding the Raymark Waste Criteria.
  8. Locations of site features depicted hereon are approximate and given for illustrative purposes only.

**Legend**

- Proposed Confirmation Boring
  - Post Construction Confirmation Sample
- Raymark Waste detected? (0-4')
  - Yes
  - No
- Historical Samples 0-4'
  - Raymark Waste
  - Non-Raymark Waste
- Water Line
- Natural Gas Line
- Raymark Waste Limits
- Stratford Parcels



**FIGURE 1 - 35 THIRD AVE 0-4FT BGS**



GCTO2 35 THIRD AVENUE RAYMARK SUPERFUND SITE STRATFORD, CONNECTICUT	
PREPARED BY: JTS	CHECKED BY: AR
PROJECT NO. 95700.00	DATE: FEBRUARY 2022

# Third Ave ROW

Spring 2023



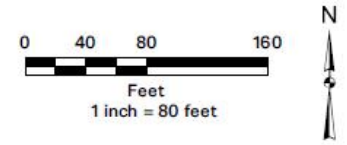
# Lockwood Ave (Summer 2023)



- Note:**
1. Raymark Waste and Non-Raymark Waste borings, and RW Areas from Seed TO Spec Figures.
  2. Raymark Waste and Non-Raymark Waste borings, and RW Areas from the Remedial Design Drawings and Pre-Design Investigation.
  3. Property boundaries are derived from the Remedial Design Drawings.
  4. Raymark Waste designation in historical samples are based on the Raymark Waste Criteria.

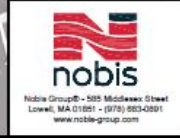
**Legend**

- Confirmation Boring Type**
- ◆ To be collected
- AECOM PDI Samples**
- Raymark Waste
  - Non-Raymark Fill
- Historic Samples 0-4'**
- Raymark Waste
  - Non-Raymark Fill
- PHC Waste Limits**
- ▨ PHC Waste Limits
  - ▨ Raymark Waste Limits

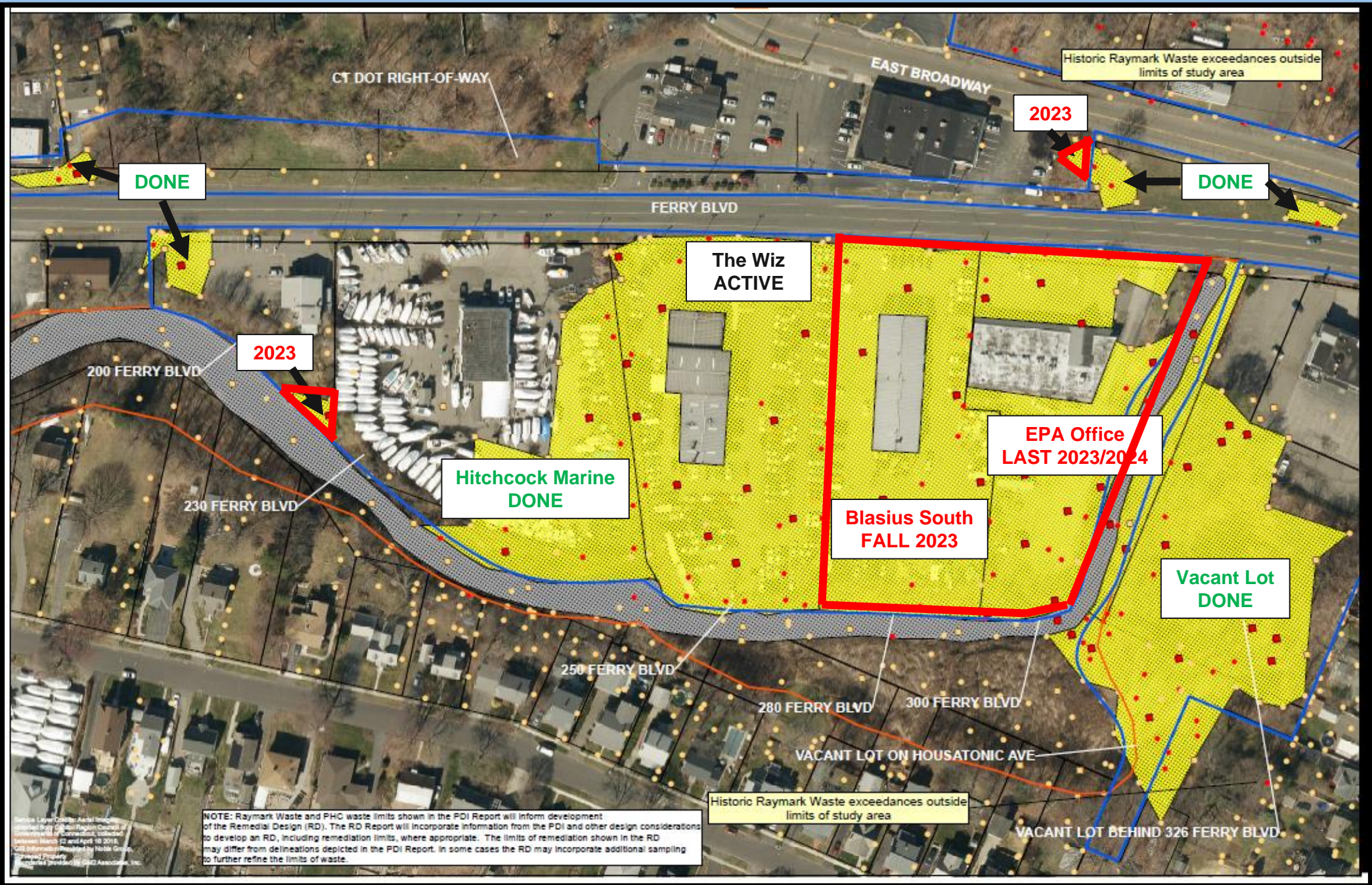


**FIGURE 1**

PROPOSED SAMPLE LOCATIONS  
 LOCKWOOD AVENUE  
 RAYMARK SUPERFUND SITE  
 STRATFORD, CONNECTICUT

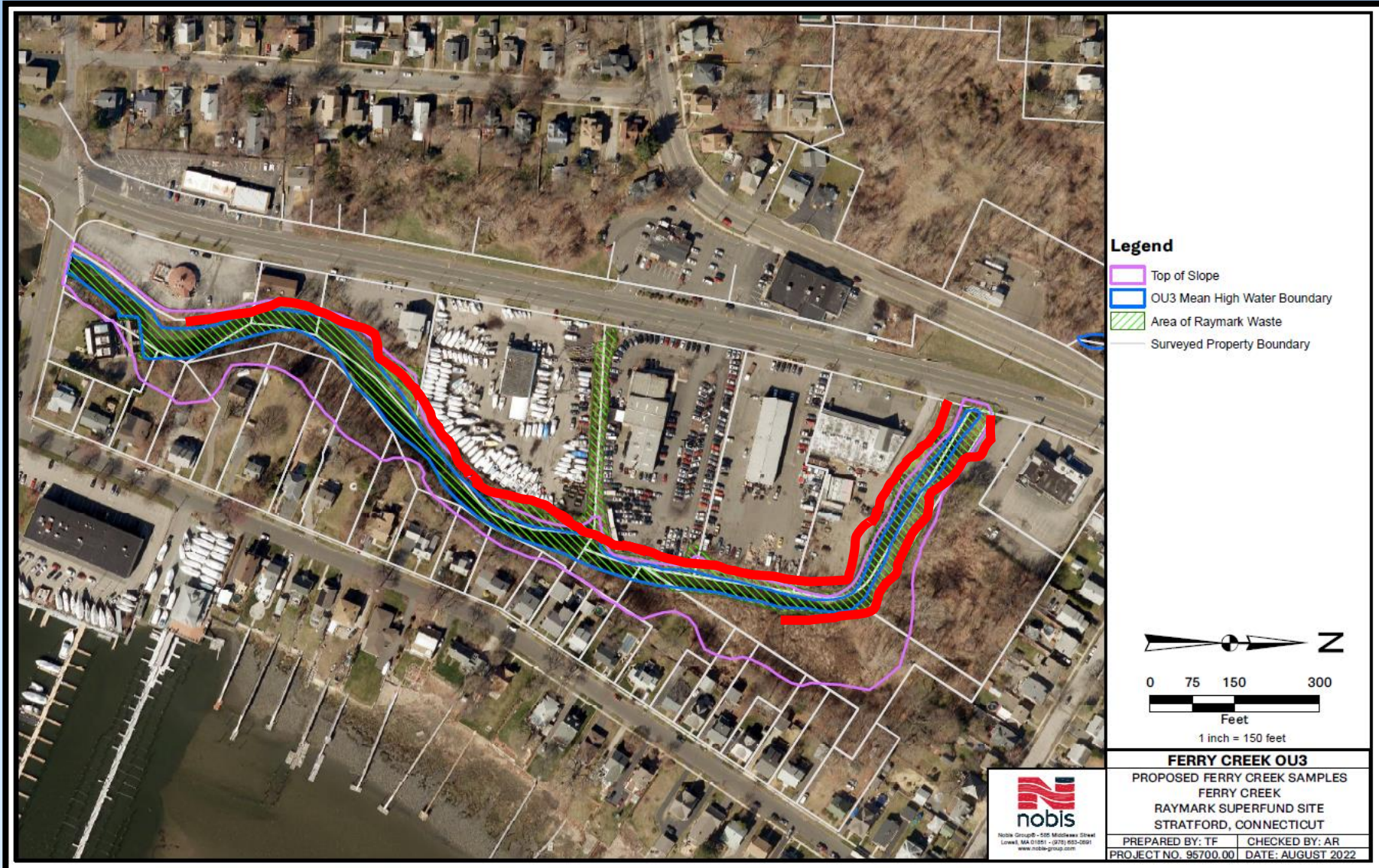


PREPARED BY: JTS	CHECKED BY: AR
PROJECT NO. 95700.00	DATE: NOVEMBER 2021



# OU3 Ferry Creek

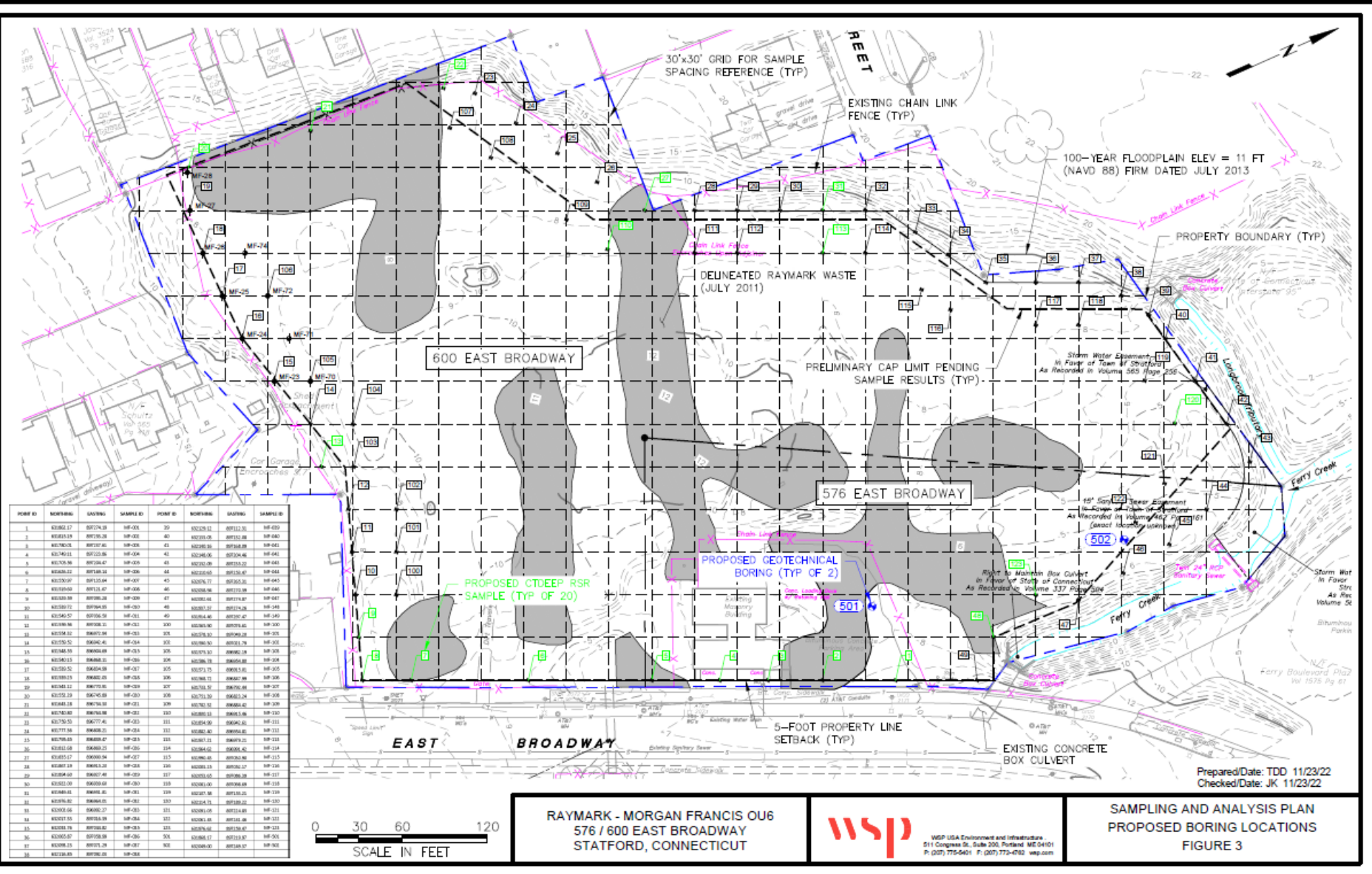
# Ferry Creek Remediation (2023)



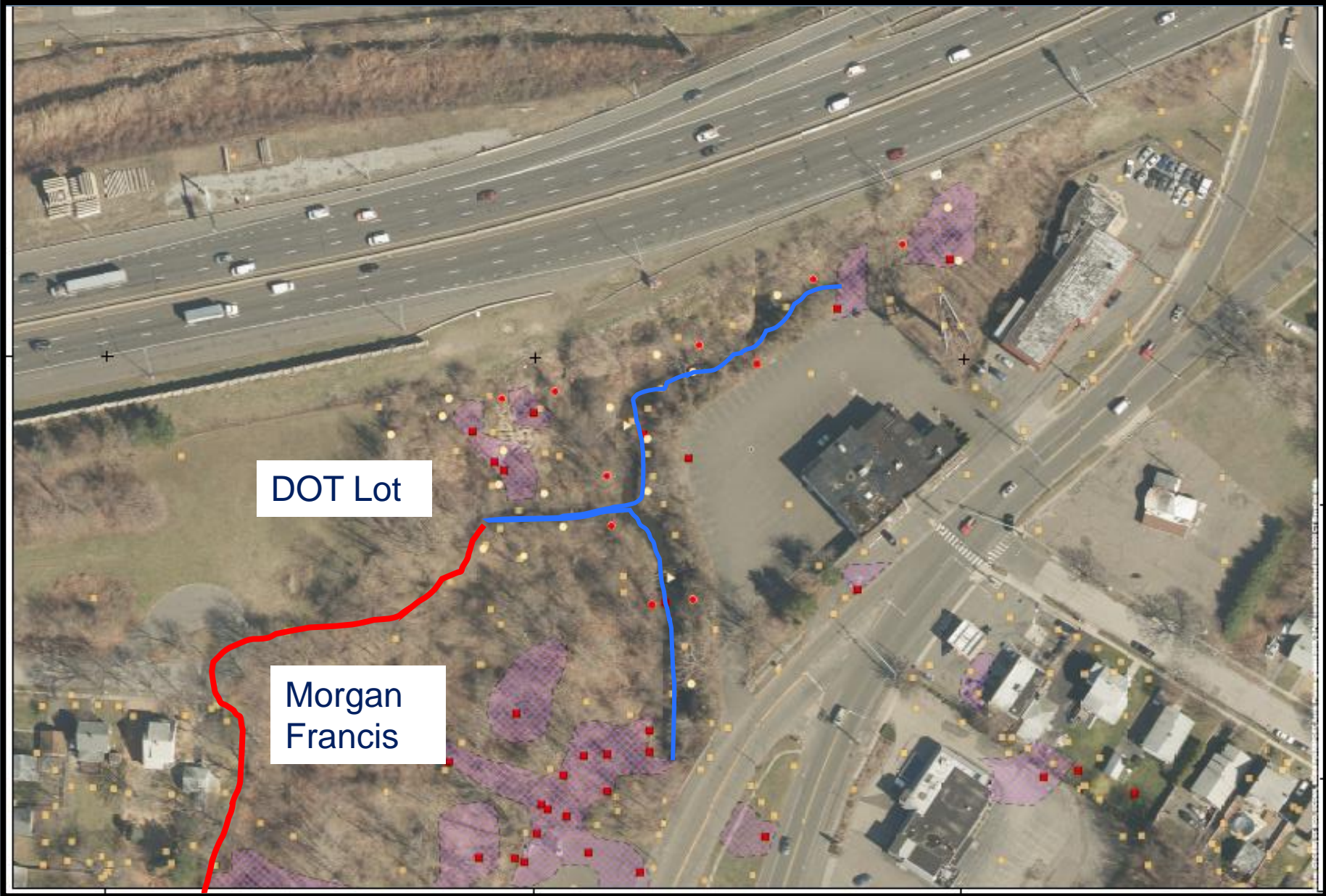
- Ferry Blvd to Broad Street
- About ½ mile
- Channel: 2ft of sediment
- Portions of banks (red): 4ft
- Total volume estimate:
  - Approx. 12,000 CY
- Clearing has begun

# 576/600 East Broadway - Morgan Francis

- 2011 ROD
  - Cap in place
  - Storage units
- Update design
  - Recreational use
  - Consolidate adjacent RW
- Remedy decision in 2023



# Uppermost Ferry Creek and DOT Lot



# Major Quality Control Issues



- Dust and air monitoring NOT deployed on February 20<sup>th</sup>
  - Step-out area, Holiday
  - Beacon Point Marsh (saturated, no receptors, 2 hr duration)
- Truck tarp NOT fully secured on February 27<sup>th</sup>
- Fence gate at OU4 NOT secured on March 4<sup>th</sup>



# OU4 Updates

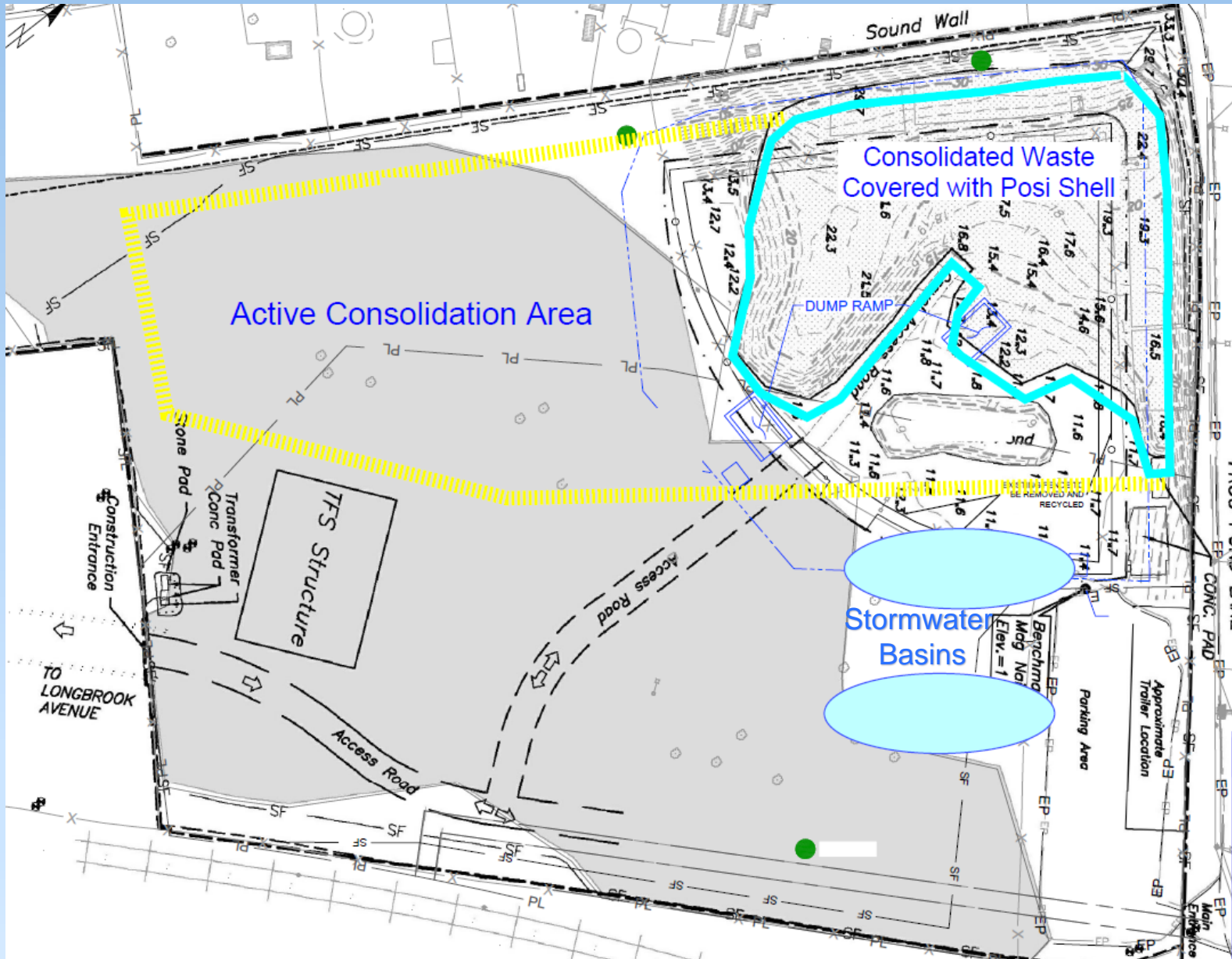


# OU4 Ballfield Work Completed or Ongoing Since January



- Approximately 53,000 CY of material has been consolidated, compacted, and covered to date
- Posi-Shell cover has been applied on all previously imported Raymark Waste at the Ballfield
- Stormwater conveyance line construction underway
- Pumpstation construction is underway
- 6 perimeter air monitors at OU4 are operating daily
- Winter operations (stockpile and cover material) in effect

# OU4 Consolidation Area



- Approximately 53,000 CY of material has been consolidated, compacted and covered
- Posi-shell or approved cover placed over waste at end of each day
- Reconfiguration of OU4 :
  - New primary access road
  - New stormwater infiltration basins
  - Stormwater storage tanks

# OU4 Consolidation Area



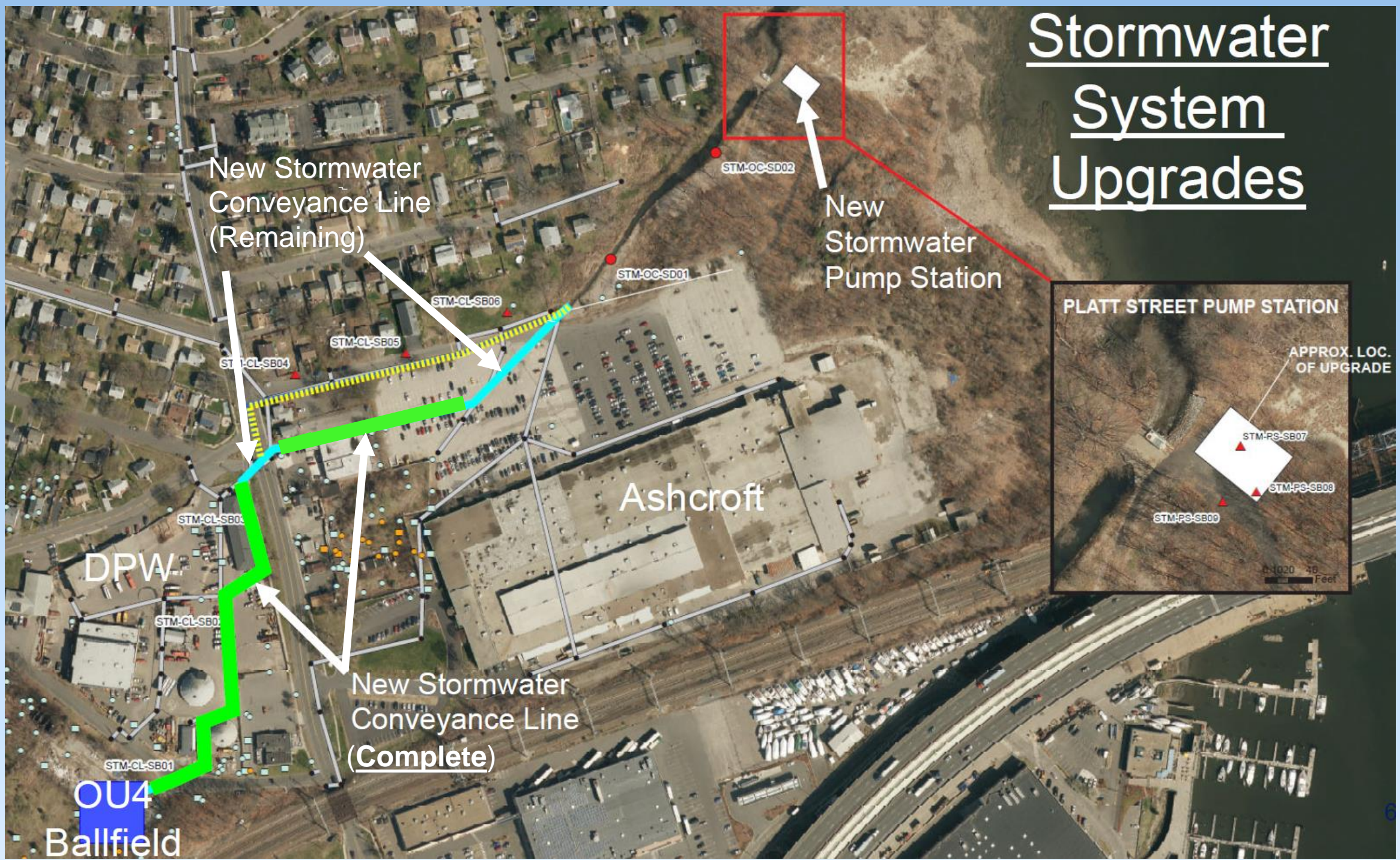
Material Placement Within  
OU4 Consolidation Area



Loading Amended Soil for  
Consolidation

# OU4 Stormwater System

# Stormwater System Upgrades



# Stormwater Conveyance



Trench Box for  
Culvert Installation



Box Culvert  
Installation

# Stormwater Conveyance



Sheet Pile Installation at  
Headwall



Helical Piles

# New Pump Station

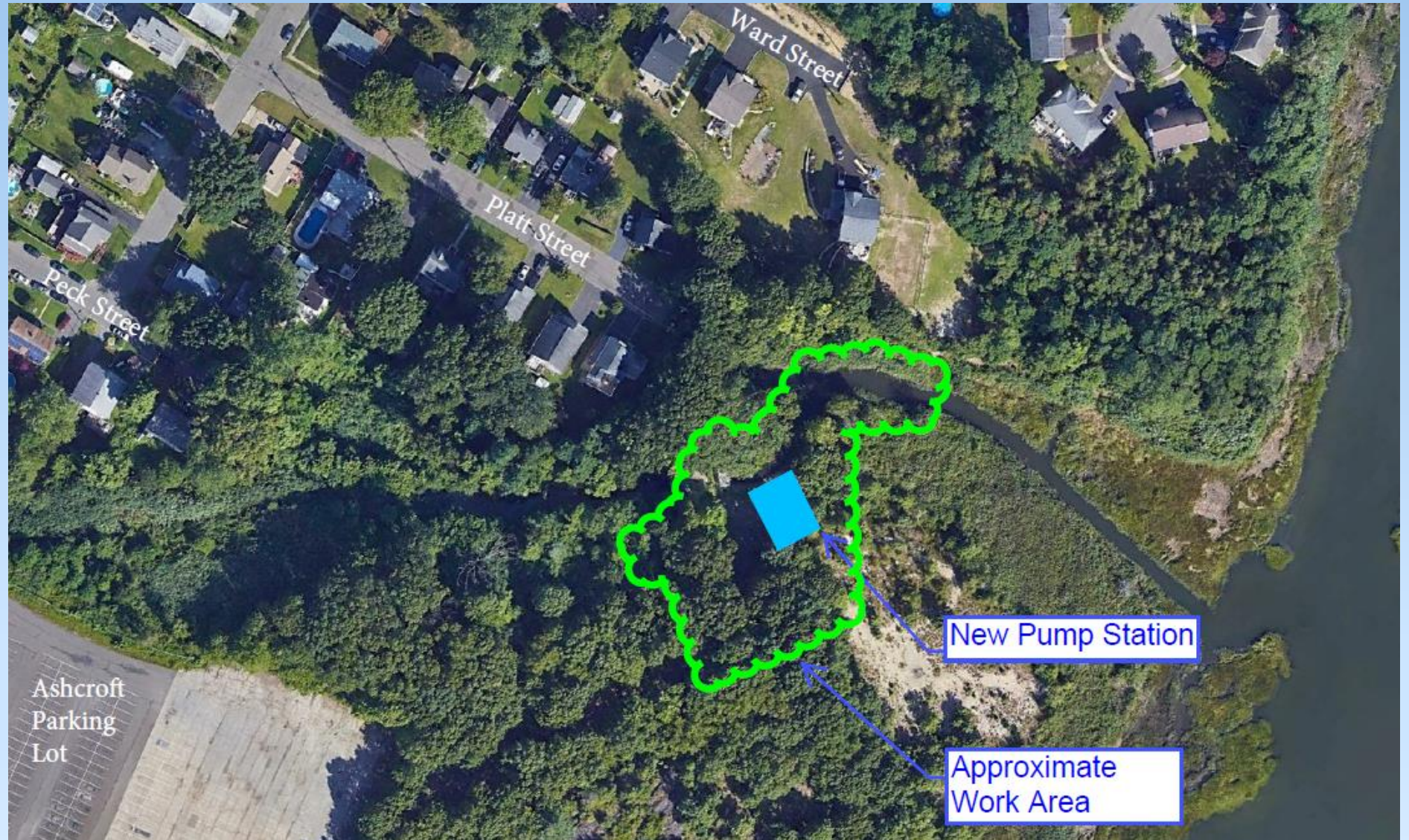
- P&S Construction – Prime contractor
- Construction underway
- Construction duration approximately 24 mo.
- 4 Axial Flow Pumps
- 200 CFS Capacity
- Operates during significant storm and high-water events
- Masonry Pumphouse





# Pumpstation – completed and upcoming site work

- Site access and preparation complete
- Sheet pile installation complete
- Dewatering well point installation complete
- Dewatering system setup complete and running
- **Excavation of building footprint underway**
- Blasting will be required to remove approximately 5-12' of underground ledge (rock) within the pumpstation footprint



# Pumpstation Site



## Excavation Area

# Pumpstation – Ledge Removal



- Maine Drilling and Blasting
- Approach is to minimize ground vibrations as much as possible
- Home inspections will be conducted in the vicinity of the work
- EPA and USACE will coordinate with homeowners for home inspections
- Vibration monitors will be deployed
- Each blast event will generally occur between 10:00 AM and 11:00 AM
- It is estimated that there will be approximately 10 blast events over a period of 3 weeks
- Work is expected this spring
- Site will be secured from public
- Multiple 6000 lb blasting mats will be utilized

# Air Monitoring

# Raymark Air Monitoring Program

- Dust monitoring protects workers and abutting community
  - Dust Action Levels based on property and type of work
  - Action Levels = 0.014 (OU4) and 0.019 mg/m<sup>3</sup> (OU6) when Raymark Waste handled.
  - Action Level = 0.150 mg/m<sup>3</sup> when only clean soil handled
  - Chemical samples collected for lab analysis when Raymark Waste is handled
  - Low safety threshold – STOP WORK before any potential risk to workers or community
- Vibration monitoring conducted
  - STOP Work = 0.5 inches/second
- Weekly Air Monitoring, Chemical Data and Vibration Monitoring Reports posted on Town Raymark website



Chemical Sampling Port

Dust Monitoring Station



Personnel Monitoring



# Monitored Tasks

- OU4
  - Spreading Soil, Haul Road Maintenance, Managing Soil in the TFS.
- OU6 (Beacon Point)
  - Excavation of RW, Demo of BP Dock, Sheet Pile Installation.
- Stormwater Channel
  - Box Culvert Installation, H Pile Installation, Excavating to Pour Helical Pile Caps.

OU4 – Spreading Soil



Stormwater Channel -  
Excavating to Pour Helical Pile Caps



One Beacon Point – Excavation

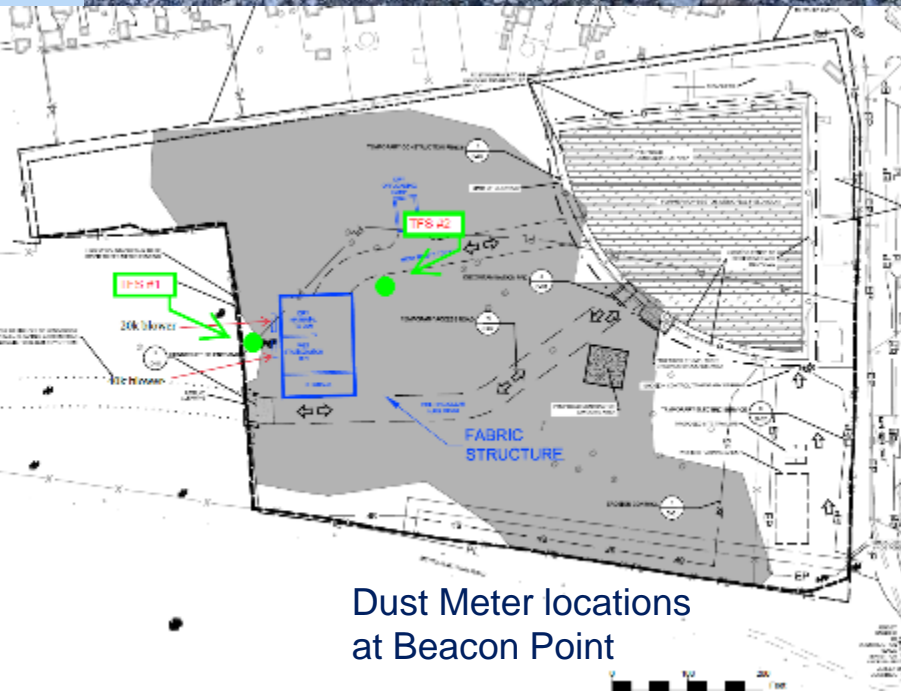


# Air Monitoring Results



Vibration Meter locations  
at Stormwater Channel.

- Since January Public Meeting - No Exceedances of OU4 or OU6 Dust Action Level Criteria.
- No Chemical Action Levels Exceeded.
- No Health and Safety Risks to Workers or Residents.



Dust Meter locations  
at Beacon Point

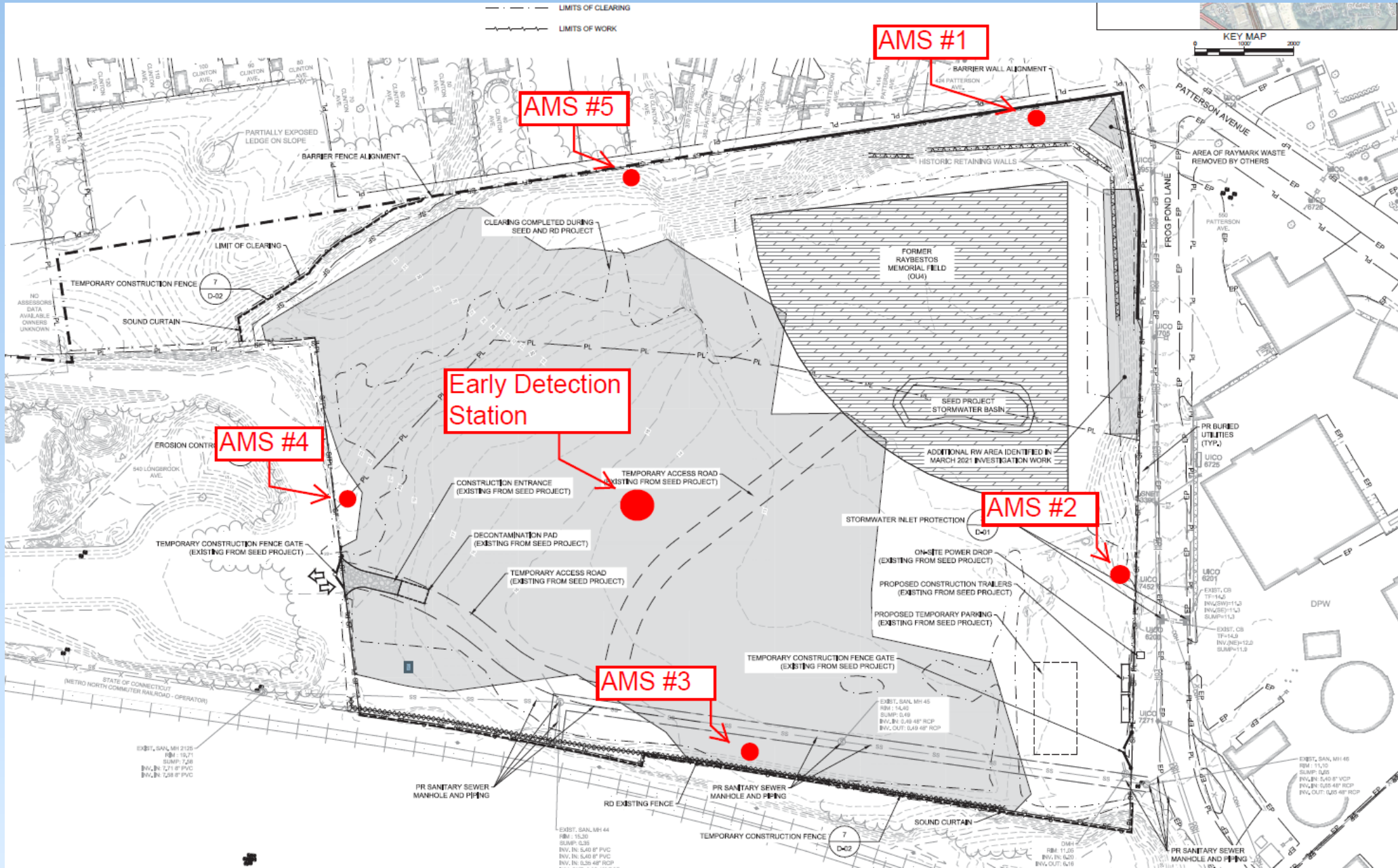
# Vibration Results

- Vibration threshold of 0.5 inches/second was exceeded once on 3/6.
- Work was stopped as soon as the threshold was exceeded.
- Caused by moving equipment close to 390 East Main Street.
- Corrective Action: Working more carefully in the future especially close to structures.
- No additional vibration exceedances were reported the remainder of the reporting period.





# New OU4 Air Monitoring Set Up



# Project Schedule

# Consolidation Remedy Schedule



- **OU6**

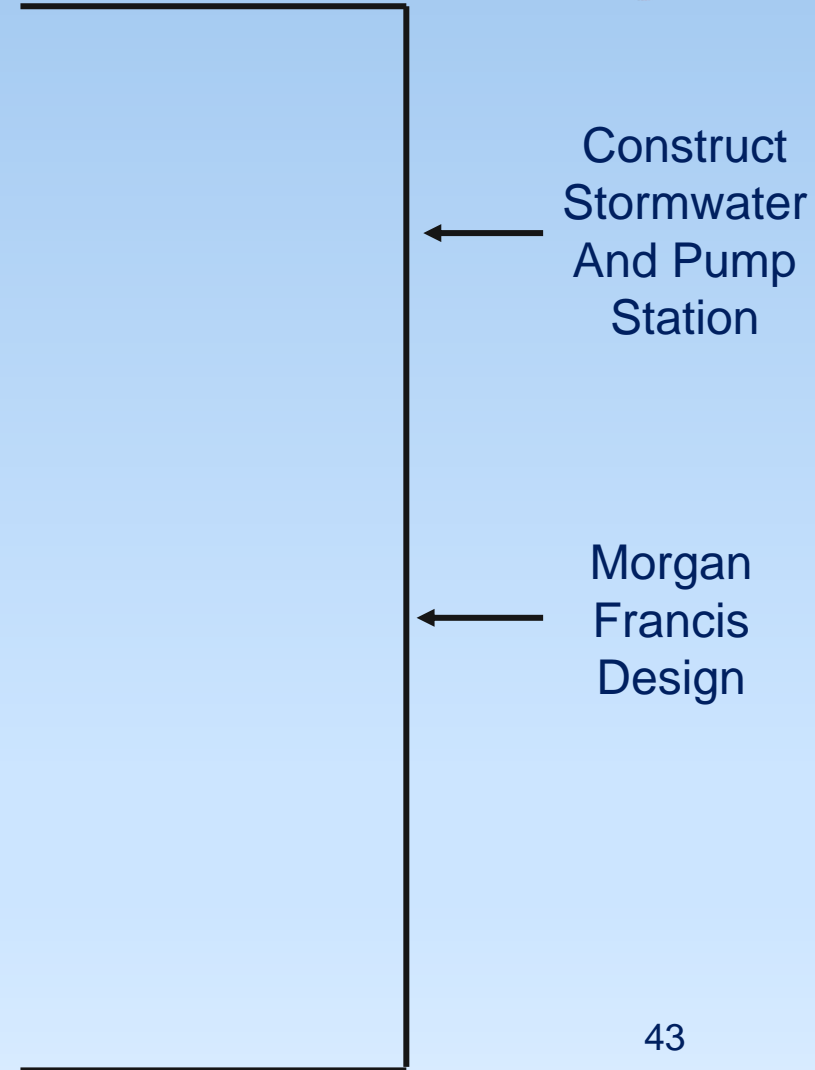
- Restoration Ongoing - Beacon Point
- Next week - 635 East Broadway
- May - 3rd Ave ROW
- 2023 Summer – Lockwood Ave
- 2023 Fall – Blasius Dealership
- 2023-2024 Winter/last: EPA Office/Former Ski Shop

- **OU3**

- 2023 April to Dec : Ferry Creek (East Broadway to Broad St)

- **OU4**

- 2024: Construct cap



# Next CAG Meeting May 31<sup>st</sup> at 6:30pm

For more information about the Raymark Superfund Site, including copies of presentation slides, documents and meeting minutes, please visit: [stratfordct.gov/raymark](http://stratfordct.gov/raymark)

# Thank you for joining!

- Visit [stratfordct.gov/Raymark](http://stratfordct.gov/Raymark) for updates, contact information, air monitoring results, meeting dates, meeting recordings and Powerpoint slides
- Email Alivia at: [acoleman@townofstratford.com](mailto:acoleman@townofstratford.com) with further questions, concerns, feedback or to sign up for email distribution list.