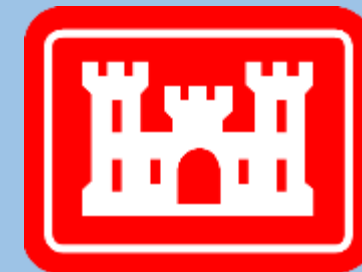


Community Advisory Group

Raymark Industries,
Inc. Superfund Site
Stratford, CT

Jim DiLorenzo, EPA
Mike Looney, USACE
Dave Heislein, USACE

May 25, 2022



**US Army Corps
of Engineers®**

To download presentation slides visit:

Stratfordct.gov/Raymark

Virtual Meeting Guidelines

- Everyone will be muted through the presentations - please stay muted to eliminate background noise.
- Hold questions until the end of each presentation.
 - Use the chat box.
 - Ask questions related to the presentation topic
 - Please be respectful of time, so everyone has a chance to speak
 - Mute yourself after speaking
- Be respectful and patient!
- Talk one at a time.
- **This meeting will be recorded.**

AGENDA

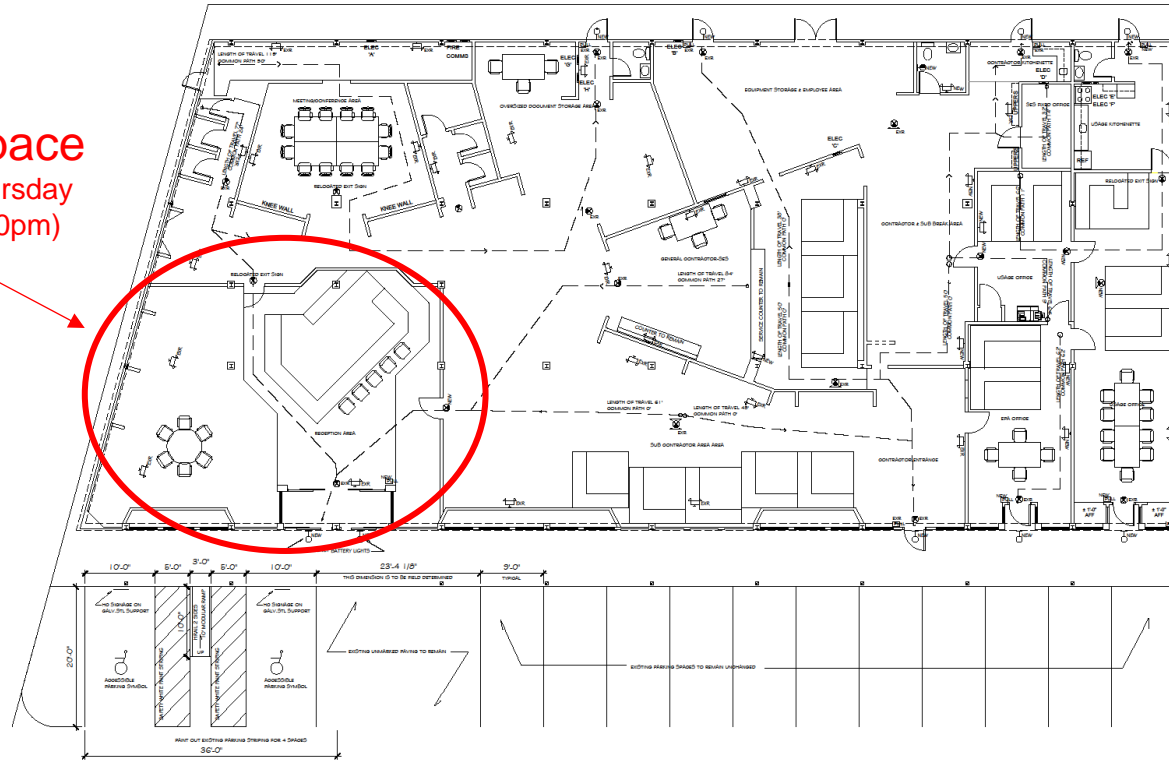
- INTRODUCTIONS AND MEETING RULES
- EPA STRATFORD OFFICE
- OPERABLE UNIT 6 (OU6) UPDATES
- RAYBESTOS MEMORIAL FIELD (OU4)
- STORMWATER CONVEYANCE SYSTEM
- AIR MONITORING
- OVERALL PROJECT SCHEDULE

EPA Stratford Office

- 300 Ferry Blvd (former Ski Shop)
- 5-year lease with a 5-year option
- Office space for EPA, USACE, and contractors (about a dozen staff)
- Benefits:
 - Publicly accessible
 - Space for future community meetings
 - Is an OU6 parcel (1 less impacted bus)
 - Access to other OU6 parcels
 - Egress and laydown for OU3 cleanup

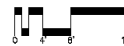


Public Space
Monday to Thursday
(7:00am to 5:00pm)



PROPOSED LIFE SAFETY PLAN

SCALE: 1/8" = 1'-0"



LEGEND

- ⊙ EXR. EXISTING TO REMAIN
- ⊙ EXR. RELOCATED EXIT SIGN
- ➔ NEW NEW EXIT SIGN WITH DIRECTIONAL ARROWS
- ⊙ EXR. EXISTING FULL STATION TO REMAIN
- ⊙ NEW NEW FULL STATION
- ⊙ EXR. EXISTING EMERGENCY LIGHTING TO REMAIN
- ⊙ NEW NEW CALL FOR AID + REMOTE LAMP OUTSIDE DOOR
- ⊙ NEW NEW EXTERIOR MEANS OF EGRESS LIGHTING
- ➔ NEW PATH/DIRECTION OF EMERGENCY EGRESS

MUNGER
PAT MUNGER CONSTRUCTION
GENERAL CONTRACTOR:
Pat Munger Construction Inc.
750 East Main Street
Stratford, CT 06405
203-483-3845
info@mungerconstruction.com

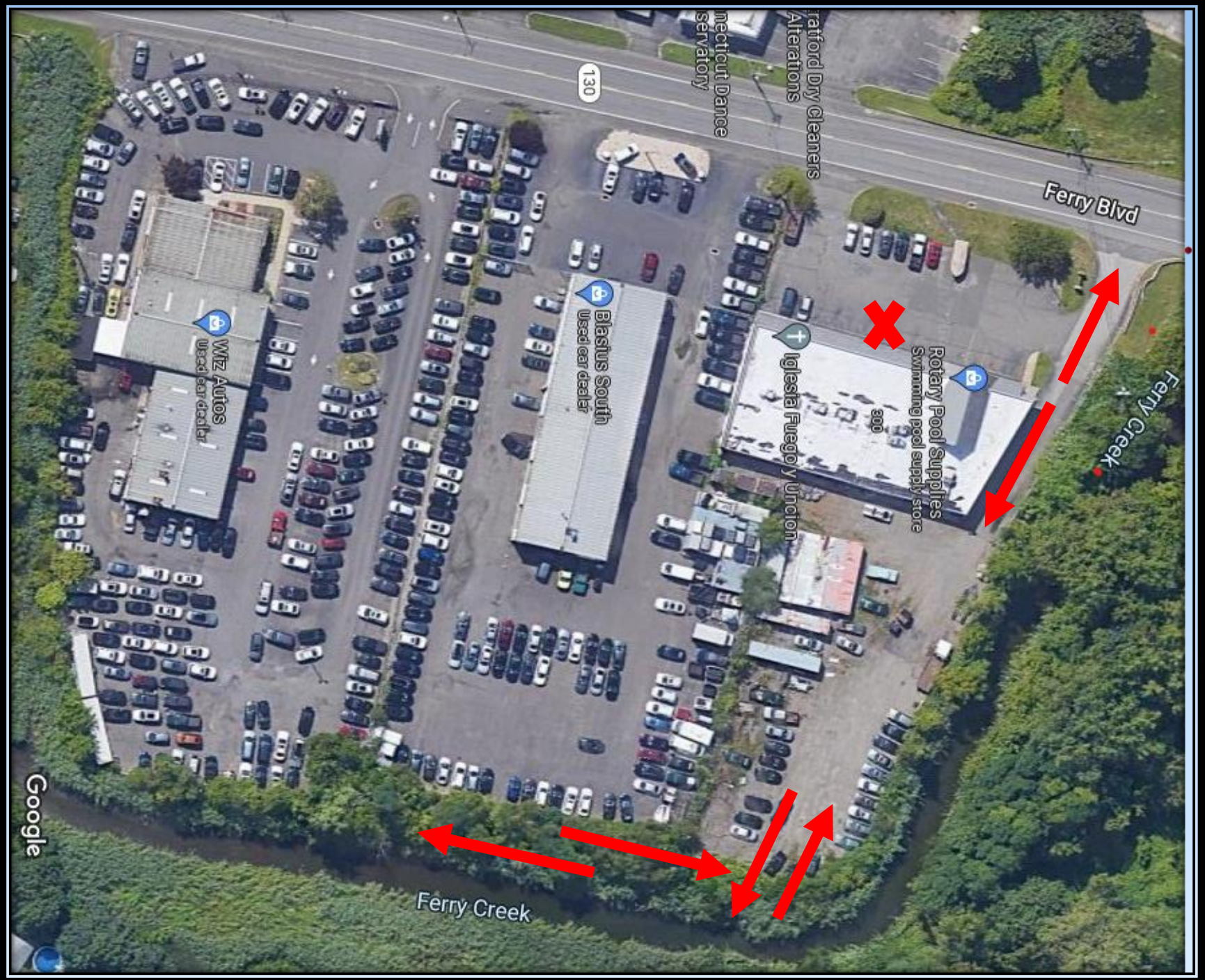
PROPOSED RENOVATIONS FOR
**SEVENSON ENVIRONMENTAL
FIELD OFFICE**
300 FERRY BOULEVARD, STRATFORD CT

PROJ #: 21-0280
SCALE: 1/8" = 1'-0"
DRAWN BY: SAS
STAGE: PERMIT
DATE: 10/21/21

DESIGN PROFESSIONAL SEAL:

REVISIONS:

SHEET TITLE
LIFE SAFETY PLAN
LSP1



OU6 Updates

Vacant Lots Behind the Blue Goose



- Completed
- Jan. 18th to May 11th
- 9,622yds (905 trucks)
- 1,362yds PHC (121 trucks)
- Restoration
 - Parking lot repaved/striped
 - Fence replaced
 - About 40 border trees/arborvitae
 - Compacted gravel

March 24, 2022



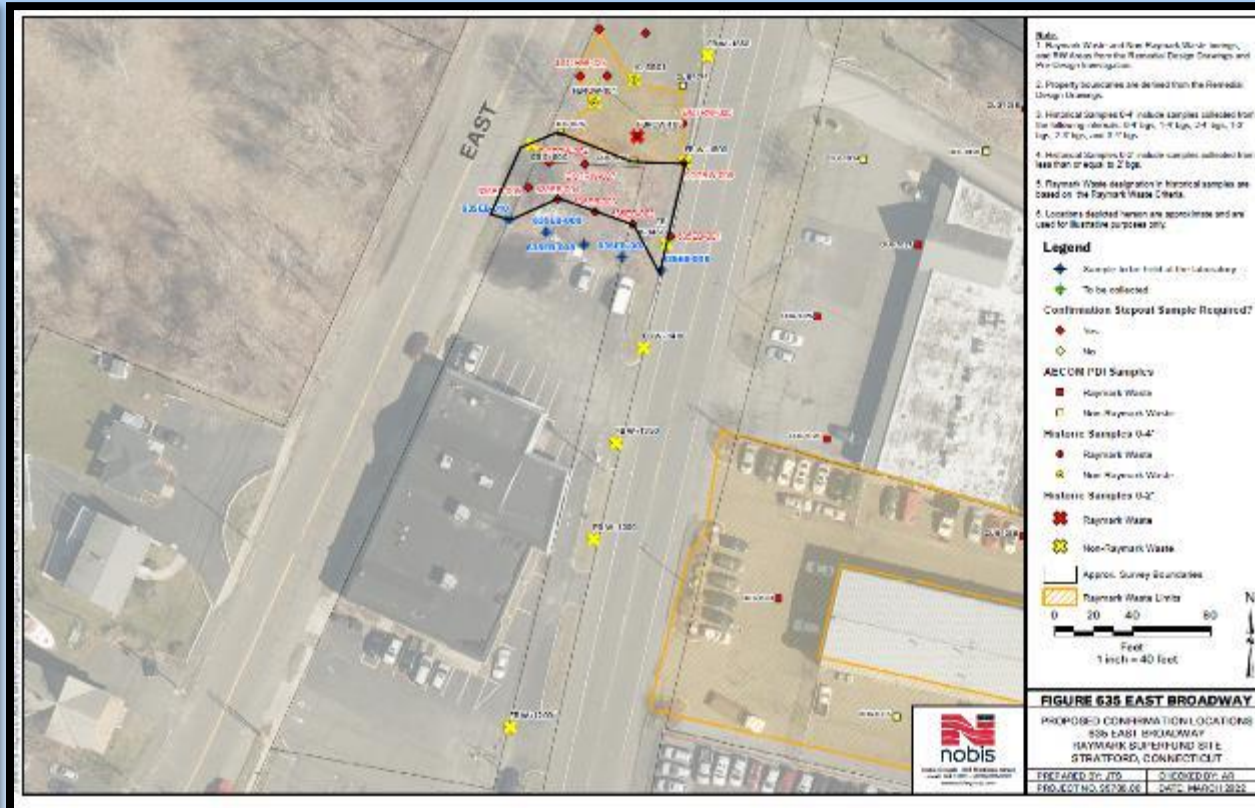
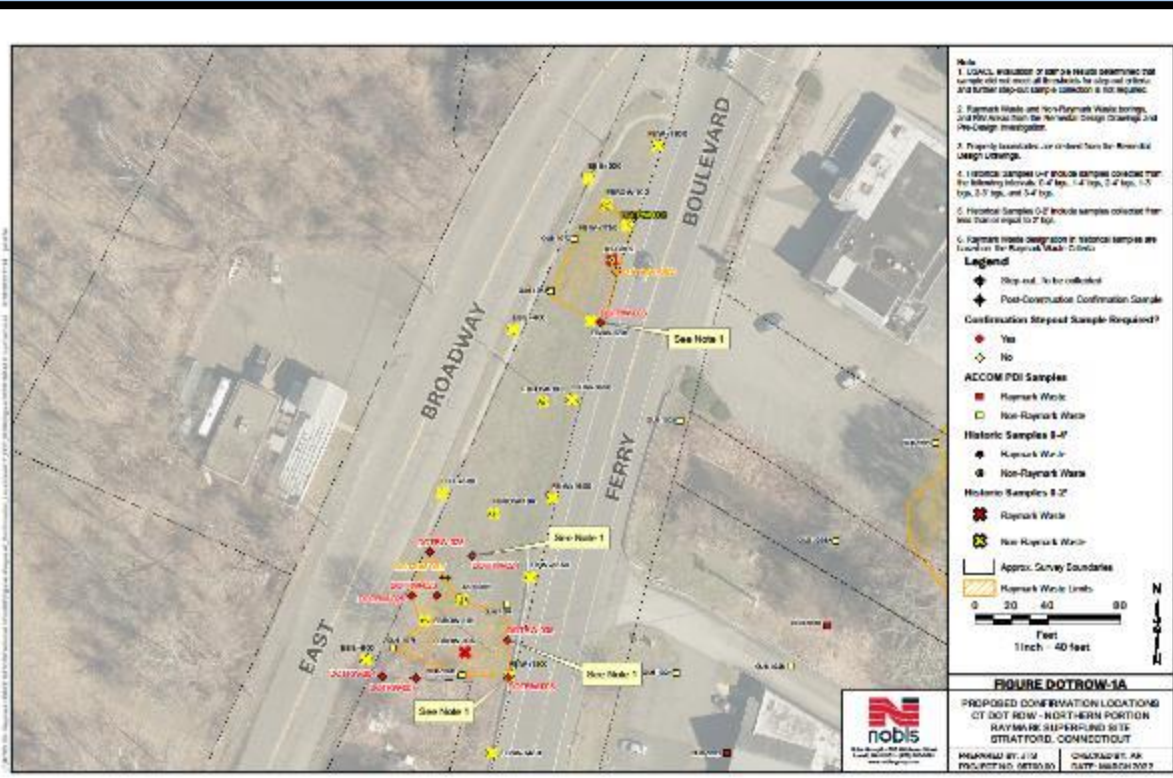
Vacant Lot – Restoration (May 11, 2022)



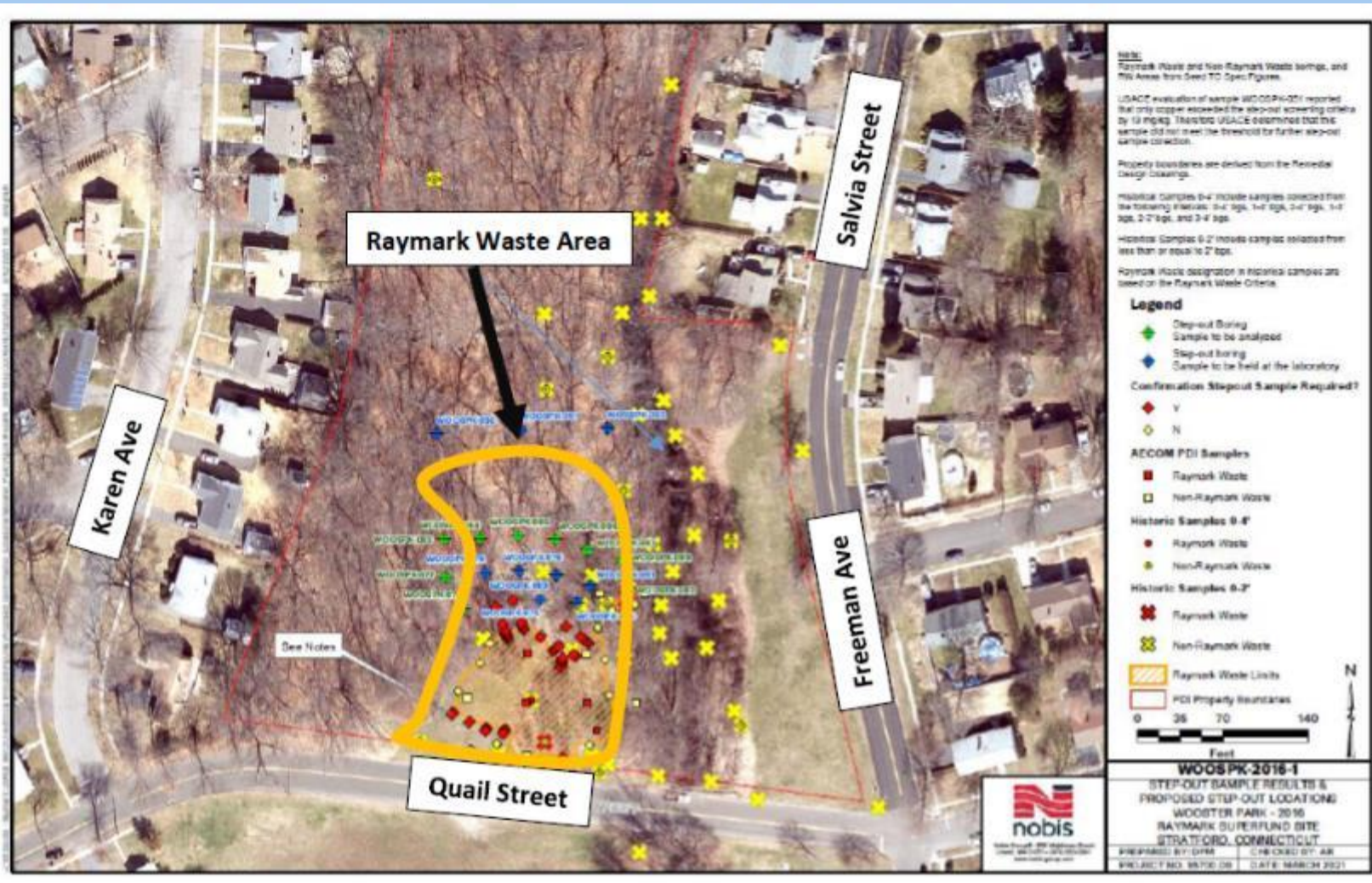
DOT ROW – Additional Remediation

- Primary excavation completed in September 2021 - 430yds (47 trucks)
- Post-remediation sampling
- 2nd excavation on March 31, 2022 - 48yds (6 trucks)
- 3rd excavation planned for July at 635 East Broadway – app.150yds (20 trucks)

Original DOT ROW Areas (left) and Supplemental Areas (right)



Quail St/Wooster Park



- Finished on Jan. 6, 2022
- **RW: 4,872yds (433 trucks)**
- **PHC: 130cy (15 trucks)**
- Restoration completed on May 6, 2022
- Trees, shrubs, loam, grass seed, bolders



Quail St. Plantings May 6, 2022

Third Ave



- Note:**
1. USACE evaluation of sample results determined that sample did not meet all thresholds for step-out criteria and further step-out sample collection is not required.
 2. USACE evaluation of sample results determined that sample met all thresholds for step-out criteria and further step-out sample collection is required.
 3. Raymark Waste and Non-Raymark Waste borings, and RW Areas from the Remedial Design Drawings and Pre-Design Investigation.
 4. Property boundaries are derived from the Remedial Design Drawings.
 5. According to FEMA's National Flood Hazard Layer, the property 35 Third Avenue and parcels to the north, east, and south are located in the AE EL-11 Floodplain. Parcels to the west are located in the VE EL-14 Floodplain.
 6. Historical Samples 0-4' include samples collected from the following intervals: 0-4' bgs, 1-4' bgs, 2-4' bgs, 1-3' bgs, 2-3' bgs, and 3-4' bgs.
 7. Raymark Waste designation in historical samples are based on exceeding the Raymark Waste Criteria.
 8. Locations of site features depicted hereon are approximate and given for illustrative purposes only.

Legend

- Proposed Confirmation Boring
 - Post Construction Confirmation Sample
- Raymark Waste detected? (0-4')
 - Yes
 - No
- Historical Samples 0-4'
 - Raymark Waste
 - Non-Raymark Waste
- Water Line
- Natural Gas Line
- Raymark Waste Limits
- Stratford Parcels

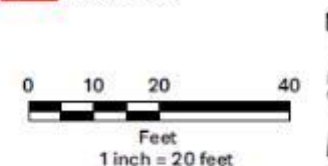


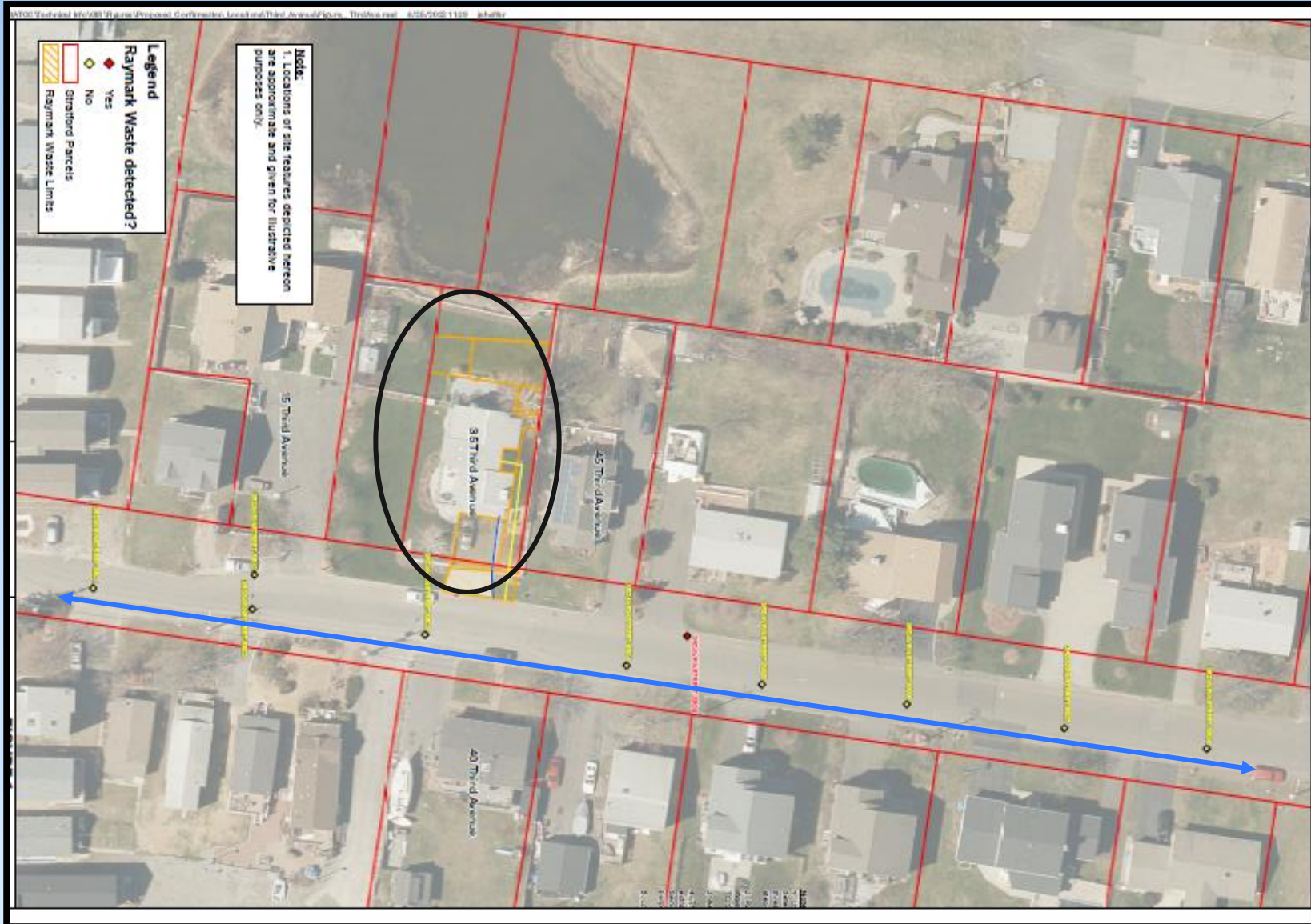
FIGURE 1 - 35 THIRD AVE 0-4FT BGS



GCTO2
 35 THIRD AVENUE
 RAYMARK SUPERFUND SITE
 STRATFORD, CONNECTICUT

PREPARED BY: JTS	CHECKED BY: AR
PROJECT NO. 95700.00	DATE: FEBRUARY 2022

Third Avenue Roadway – New Waterline

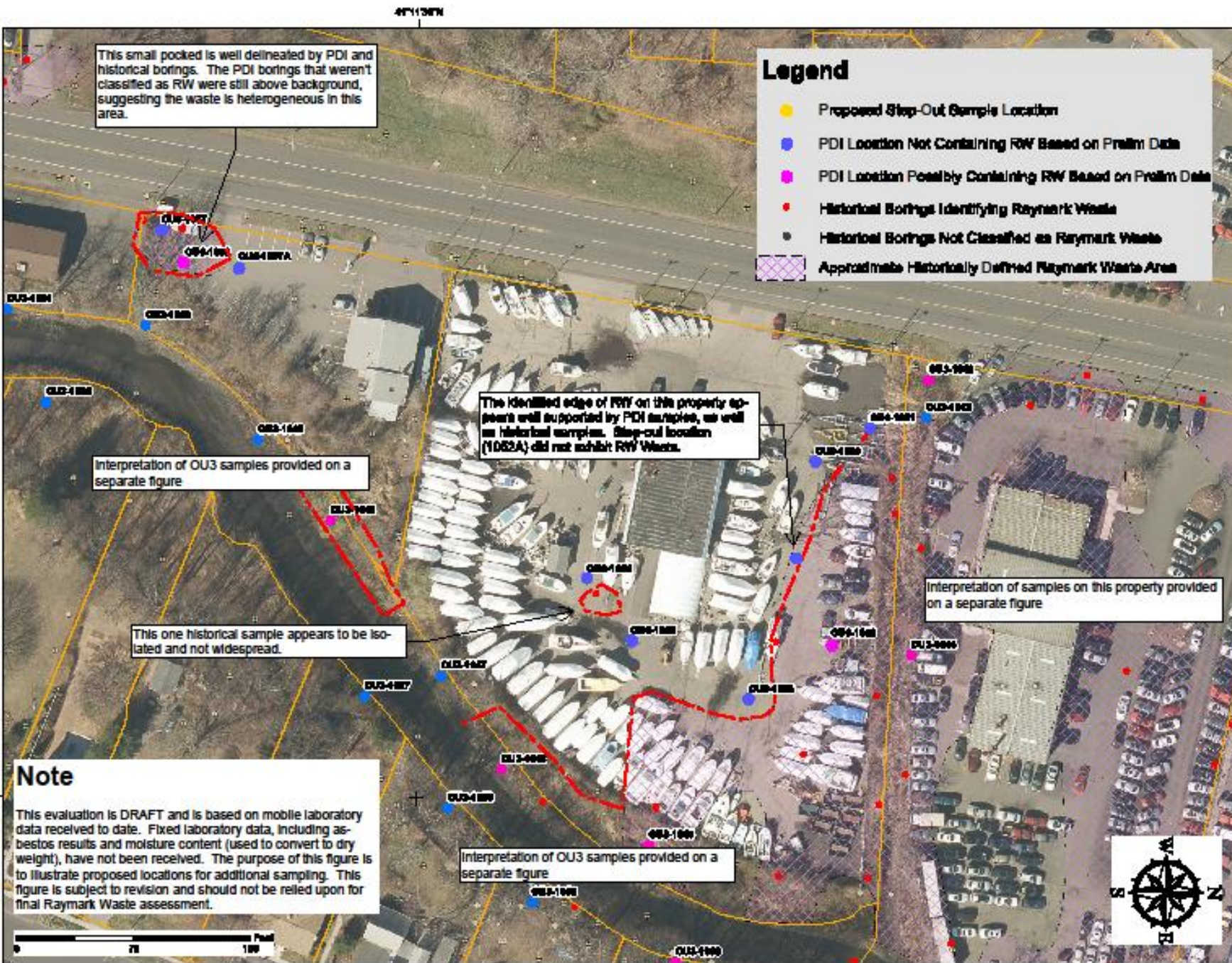


- RW – odd numbered side
- New waterline – even side
- Did RW extend to waterline corridor?
- Mobile lab/EPA sample team
- Completed 10 borings
- Safe to proceed

OU6 Area	Location	Excavation Dates	Volume (cy)	Number of truck trips?	Number of Properties	Notes
Glyne Manufacturing	380 East Main	Sept 16 -17, 2020	51.70	4	1	Phase 1 ELUR needed
Karate Studio	190 Ferry Boulevard	Dec 2 - 10, 2020	87.31	10	1	Phase 1 ELUR needed Not in 2016 ROD
Liquor Store	200 Ferry Boulevard	Dec 2 - 10, 2020	481.83	64	1	Phase 1 ELUR needed
DOT ROW along 190/200 Ferry Blvd	190/200 Ferry Boulevard ROW	Dec 2 - 10, 2020	109.30	11	1	Phase 1 ELUR needed Not in 2016 ROD
DOT Exit 33	Barnum Ave	Jan 19 – 20, 2021	345.57	19	1	DOT via Haul Road Not in 2016 ROD
Ashcroft (front), Dry Cleaner and Hair Salon	250, 304 and 340 East Main Street	Feb 16 – April 19, 2021	2,785.3	251	3	Phase 1 ELUR needed
			794.60	60	3	To Emelle, AI
302/350 East Main Street	302/350 East Main Street	Sept 15 - 16, 2021	127	9	2	Phase 2 ELUR needed Not in 2016 ROD
DOT ROW	Ferry Blvd and East Broadway	Sept 20 to Oct 1, 2021	430	47	1	Phase 2
		Supp on March 31, 2022	48	6		
171 Ferry Blvd	Snaxx Plus Convenience Store	October 4 to 19, 2021	389	41	1	Phase 2 ELUR needed Not in 2016 ROD
Ashcroft Rear	250 East Main Street	June 9 to Nov 3, 2021	9,281	745	1	Phase 2 ELUR needed
			377	35	1	To FTS/bind lead
Wooster Park	Quail Street	Nov 9, 2021 to Jan 5, 2022	4,872	433	1	Phase 1 ELUR needed
			130	15	1	To FTS/bind lead
Vacant Lots	Behind 326 FB	Jan 18 to 2022 to May 11, 2022	9,622	905	2	Phase 2 ELUR needed
			1,362	121	2	To FTS/bind lead
TOTALS TO DATE =		Raymark Waste	28,243	2,424	16	
		PHC Waste	2,664	231	7	

OU6 Remediation Tracking Table

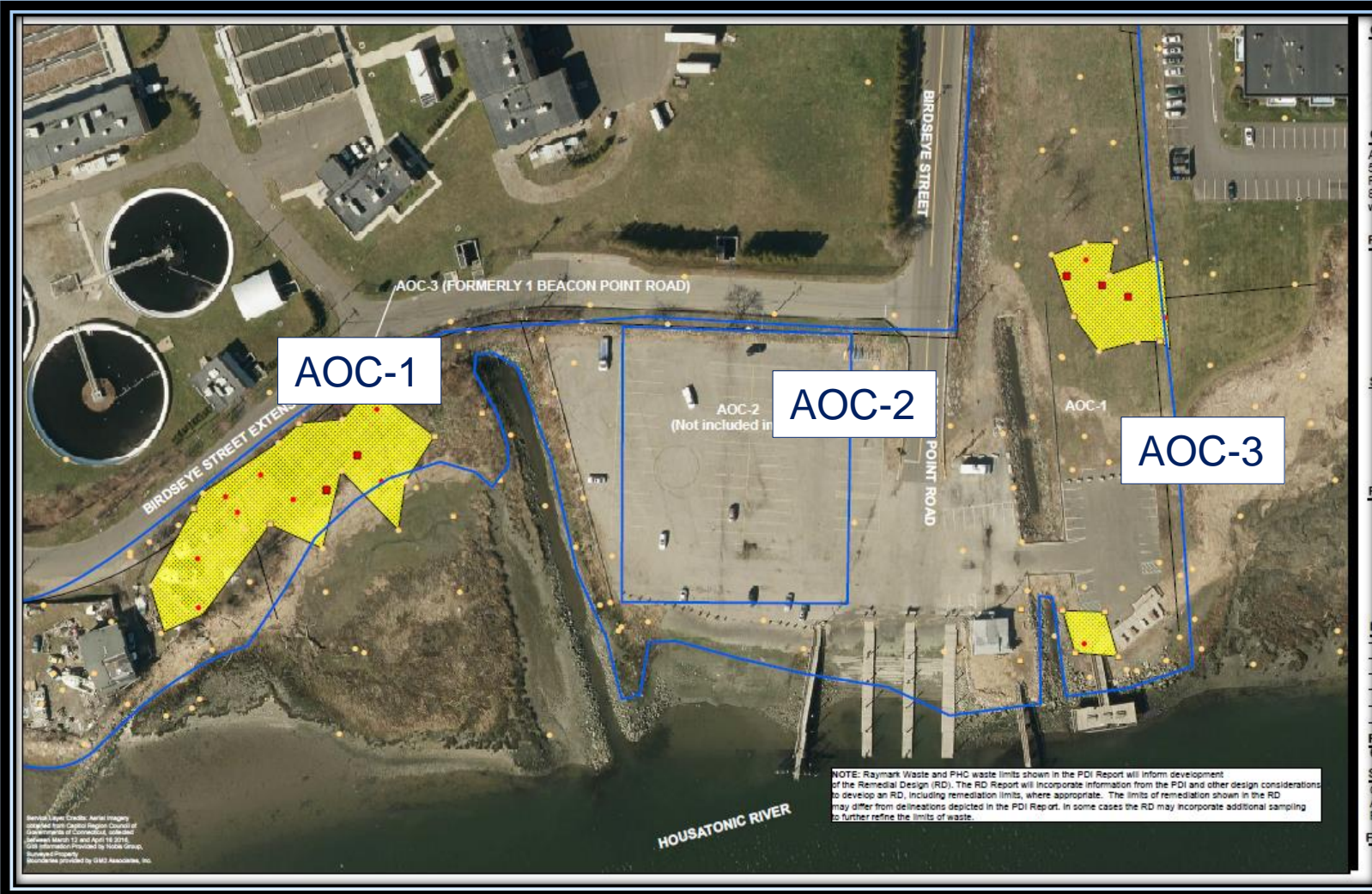
PHC volumes in RED font



Hitchcock Marina

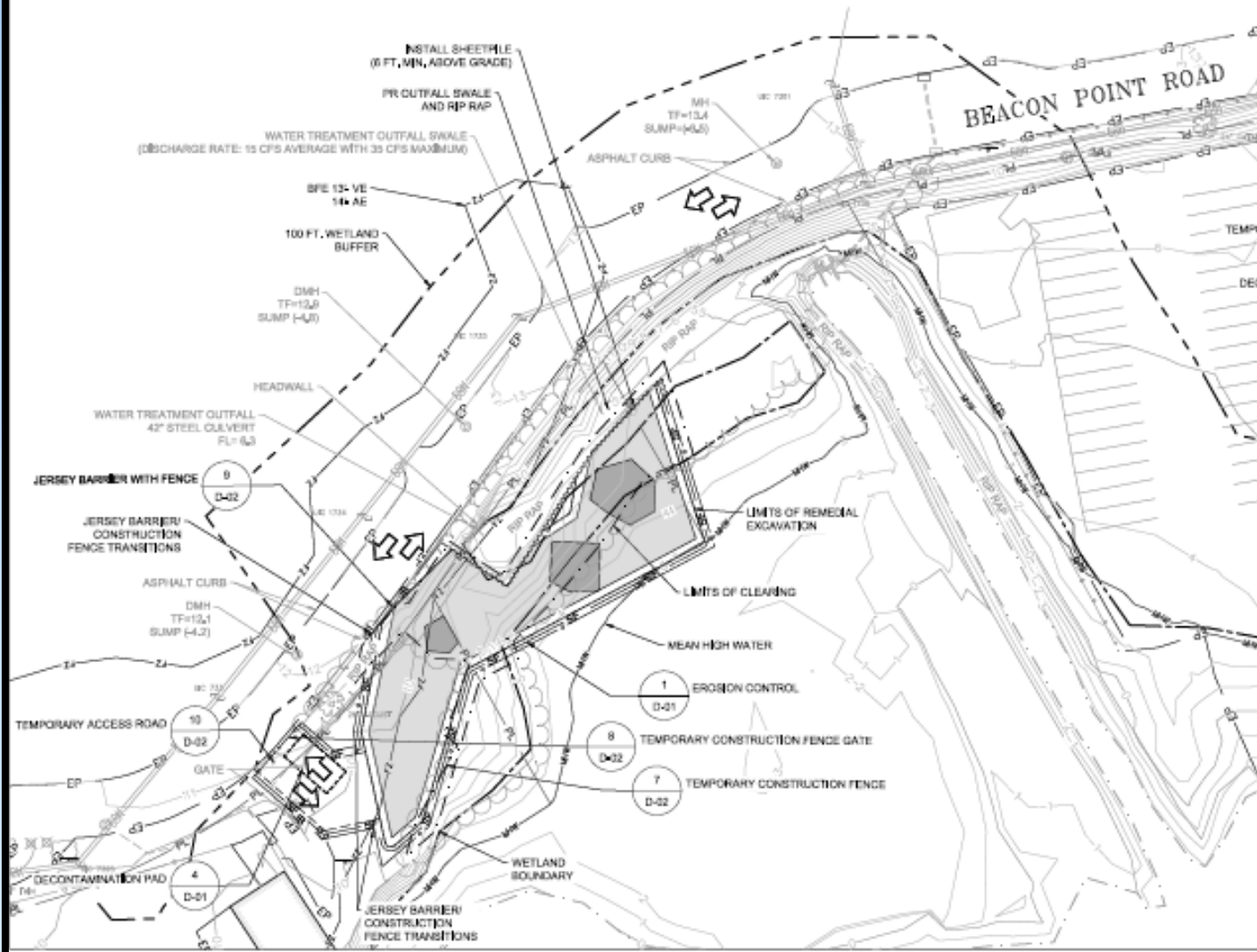
- About 3,500yds plus 500yds PHC
- Start in about 2 weeks
- During summer - Minimal boats

Beacon Point Area



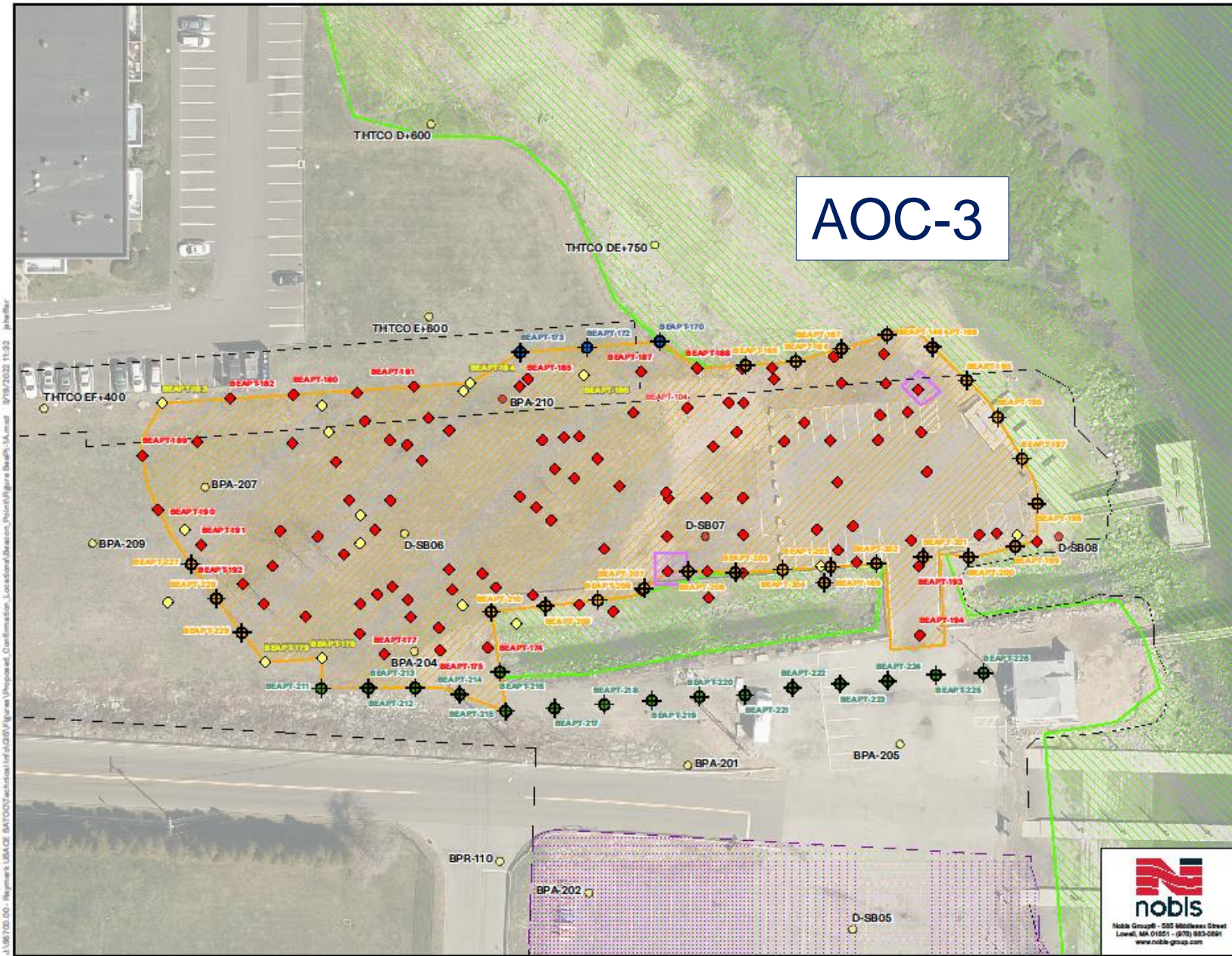
- 3 Areas of Concern (AOCs)
 - AOC-1: Town and Private Boat Yard
 - AOC-2: 2011 ROD/ELUR in place
 - AOC-3: Town and Condo
- RW: 11,000 yds (700 trucks)
- PHC: 250 yds (20 trucks)
- September 2022 to May 2023

STRATFORD WATER TREATMENT WORKS



AOC-1

AOC-3



Note:
USACE evaluation of sample results determined that sample did not meet all thresholds for step-out criteria and further step-out sample collection is not required.

Raymark Waste and Non-Raymark Waste borings, and RW Areas from the Remedial Design Drawings and Pre-Design Investigation.

Property boundaries are derived from the Remedial Design Drawings.

Historical Samples 0-4' Include samples collected from the following intervals: 0-4' bgs, 1-4' bgs, 2-4' bgs, 1-3' bgs, 2-3' bgs, and 3-4' bgs.

Historical Samples 0-2' Include samples collected from less than or equal to 2' bgs.

Raymark Waste designation in historical samples are based on exceeding the Raymark Waste Criteria.

Legend

- Pre Construction Confirmation Sample
- Post Construction Confirmation Sample
- Sample to be held at the laboratory

Confirmation Stepout Sample Required?

- Yes
- No

Historical Samples +4'

- Raymark Waste
- Non-Raymark Waste
- Approx. Survey Boundaries
- ELUR Boundary
- Raymark Waste Limits
- PHC
- Operable Unit 8

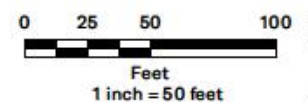


FIGURE BEAPT-1A

PROPOSED CONFIRMATION LOCATIONS
BEACON POINT & 1 BEACON POINT ROAD
RAYMARK SUPERFUND SITE
STRATFORD, CONNECTICUT

PREPARED BY: JTS	CHECKED BY: AR
PROJECT NO. 95700.00	DATE: MARCH 2022



J:\181700_00 - Raymark USA OE BAYCOOY Technical Info\GIS\Figures\Unpopulated_Confirmation_Location\MapDocs\Nobis\Figures\BeAPT-1A.mxd 3/19/2022 11:52 jph/Rea

Morgan Francis Overview

576/600 East Broadway

- 2011 Record of Decision to cap in place
- 2014 Remedial Design completed – no reuse
- Site has significant peat. Unable to support a building without significant piles. EPA cannot pay for piles.
- 2015 – 2020: Negotiated with private developer. Storage units planned. Unsuccessful.

Morgan Francis Plan

- Modify 2014 cap design
- Major changes:
 - Design cap for passive reuse. Soccer and/or lacrosse fields.
 - Consolidate Raymark Waste from abutting OU6 and OU3 properties (DOT Lot Abutting I95 North and Uppermost Ferry Creek (I95 culvert to East Broadway culvert)).
 - This will eliminate a couple of hundred trucks.
 - Formal public meetings and hearing this fall.
 - Will need to modify 2011 and 2106 Records of Decision.

OU4 Updates

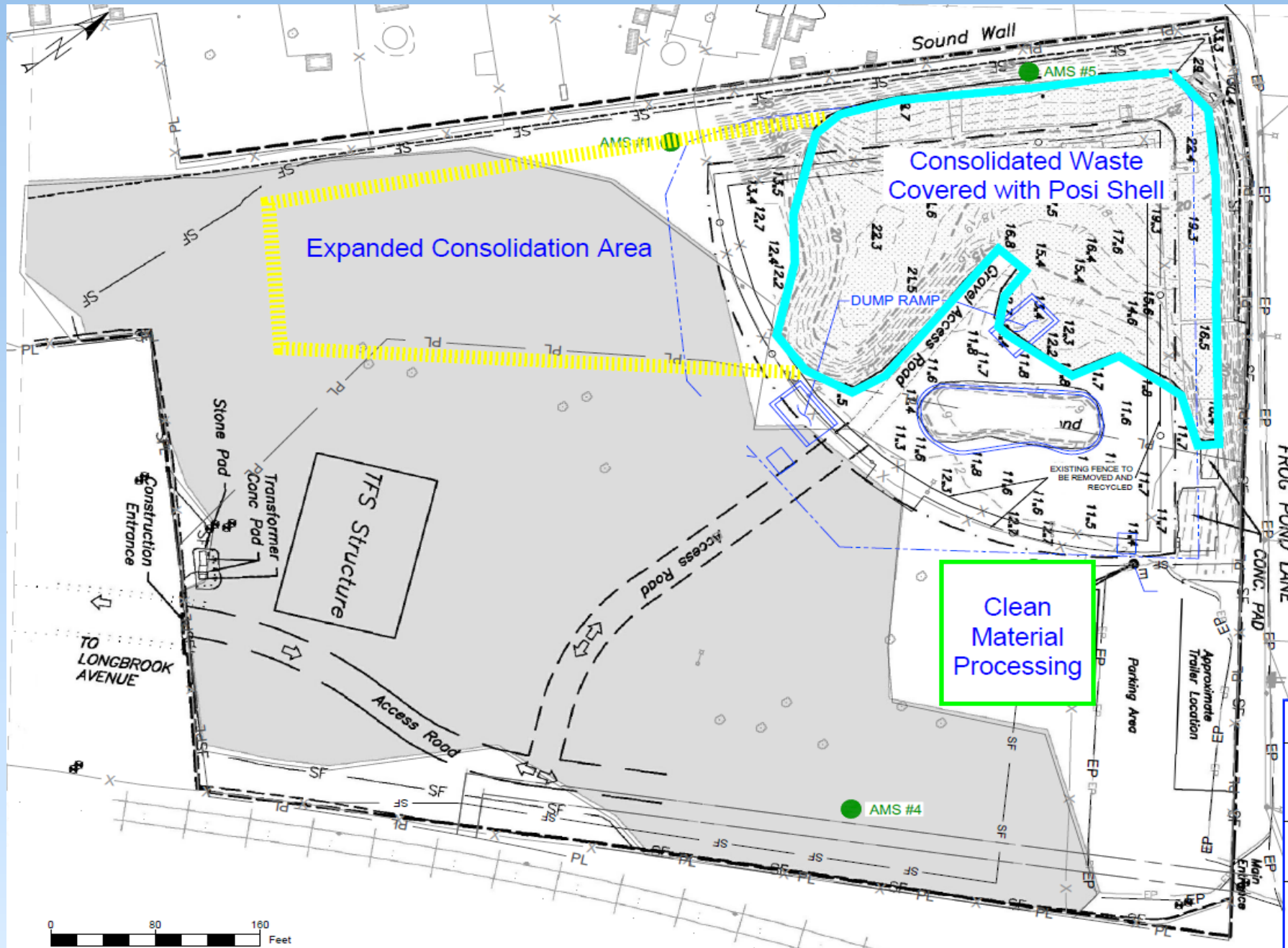
OU4 Ballfield Work Completed or Ongoing Since March



<https://www.ipcamlive.com/5fc7c13309700>

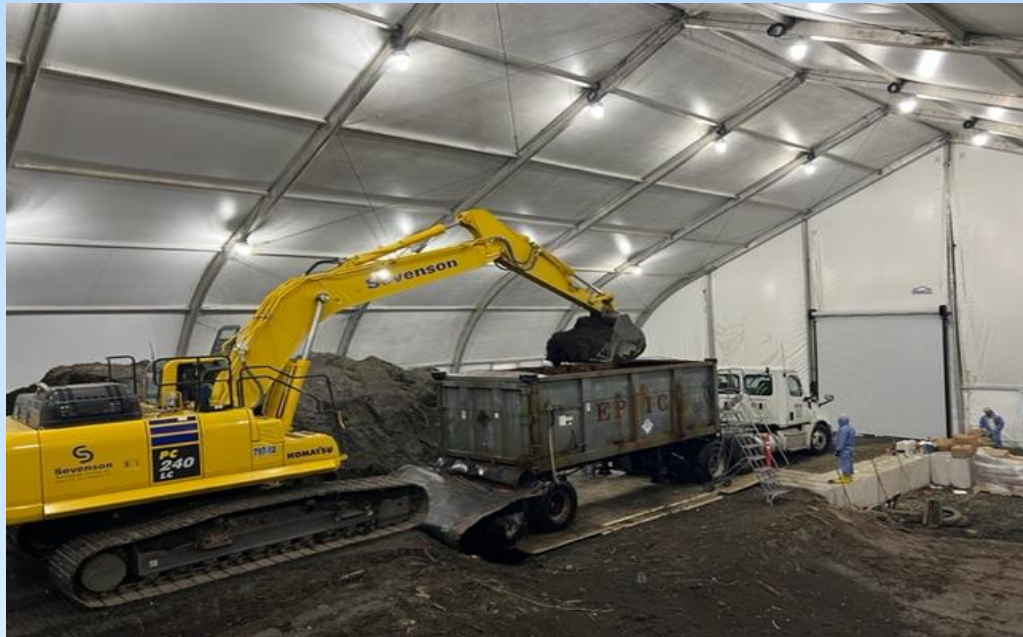
- Approximately 28,000 CY of material has been consolidated, compacted and covered to date
- Posi-Shell cover has been applied on all previously imported Raymark Waste at the Ballfield
- Landscaping maintenance was completed along residential side of sound barrier
- Additional tree clearing and OU4 prep for expansion of consolidation area done
- Stormwater conveyance line construction has begun. Pumpstation contract has been awarded
- Former Ballfield / OU4 site and cap design complete
- 5 perimeter air monitors at OU4 are operating daily

OU4 Consolidation Area



- Approximately 28,000 CY of material has been consolidated, compacted and covered
- Additional clearing completed, limited vegetation buffer remains
- Active consolidation area has expanded towards Contract Plating Site
- Clean material processing area located off active consolidation zone
- Posi-shell or approved cover placed over waste at end of each day

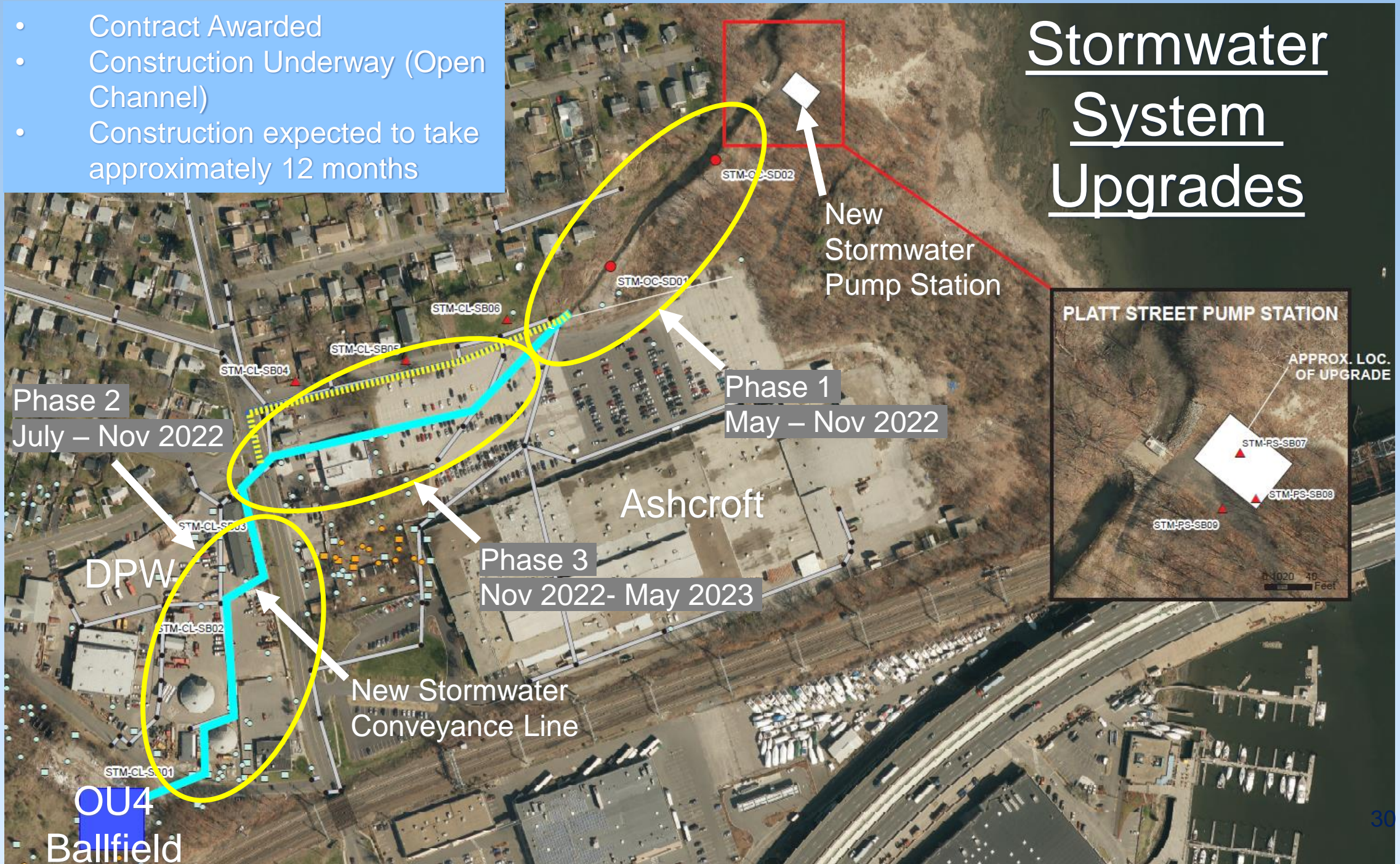
OU4 Consolidation Area



OU4 Stormwater System

- Contract Awarded
- Construction Underway (Open Channel)
- Construction expected to take approximately 12 months

Stormwater System Upgrades



Phase 2
July – Nov 2022

Phase 1
May – Nov 2022

Phase 3
Nov 2022- May 2023

New
Stormwater
Pump Station

PLATT STREET PUMP STATION

APPROX. LOC.
OF UPGRADE

Ashcroft

DPW

New Stormwater
Conveyance Line

OU4
Ballfield

Conveyance Line – Open Channel



New Pump Station

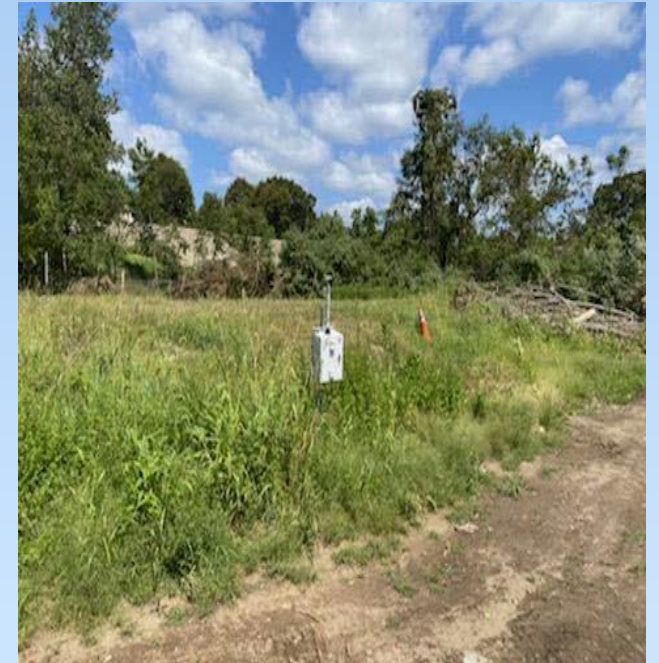
- Contract Awarded – P&S Construction
- Construction Start Expected This Summer
- Duration approximately 24 mo.
- 4 Axial Flow Pumps
- 200 CFS Capacity
- Operates during significant storm and high-water events
- Masonry Pumphouse



Air Monitoring

OU4 - Air Monitoring Results

- Since 3/30/22 public meeting Daily Average Dust = 0.002 to 0.012 mg/m³
- No exceedances of the OU4 Dust Action Level criteria (0.014 mg/m³)
- All five dust meters and sample collection systems in operation
- One personnel chemical sample collection system
- No health and safety risks to workers or residents
- No chemical action levels exceeded
- Adjusting 5 meter locations along first base line, Contract Plating, Amtrak and Frog Pond Lane as work area expands to final limits.
- Adding additional meter at OU4 (monitor worker exposure)
- Better representation of perimeter and interior work area
- Posting Weekly Air Monitoring, Chemical Data and Vibration Monitoring Reports on Town Raymark website



OU6 - Air Monitoring Results

- Soil excavation thru 4/28 and Restoration at Vacant Lot thru 5/20
- Daily Average Dust Measurements 0.001 to 0.006 mg/m³
- No exceedances of OU6 Dust Action Level criteria (0.019 mg/m³)
- Three dust meters and sample collection systems in operation
- One personnel chemical sample collection system
- No health and safety risks to workers or residents
- No chemical action levels exceeded
- Chemical analysis found wood fibers, no asbestos in 4/13/22 dust sample.
- Dedicated water truck at OU6 to manage dust
- Posting Weekly Air Monitoring Reports, Chemical Data, and Vibration Monitoring Reports on Town Website



Remaining Properties/Tentative Schedule



- OU6
 - 2022: Marina, Beacon Point, Third Ave, 635 EB
 - Jan. 2023: Two Car Dealerships
 - Spring/Summer 2023: Lockwood Ave
 - Fall 2023: Former Ski Shop – EPA HQ
 - (Part of Morgan Francis) DOT Lot Abutting I95 North
- OU3
 - 2023: Upper Ferry Creek (East Broadway to Broad St bridge)
- OU4
 - 2024: Final grading and construct cap. Restore.

Construct Stormwater System

Questions?

- Be respectful of time so everyone has a chance to speak
- Please speak one at a time.
- We will monitor the chat box for questions



Next CAG Meeting July 27 at 6:30pm

For more information about the Raymark Superfund Site, including copies of presentation slides, documents and meeting minutes, please visit: stratfordct.gov/raymark

Thank you for joining!

- Visit stratfordct.gov/Raymark for updates, contact information, air monitoring results, meeting dates, meeting recordings and Powerpoint slides
- Email Alivia at: acoleman@townofstratford.com with further questions, concerns, feedback or to sign up for email distribution list.