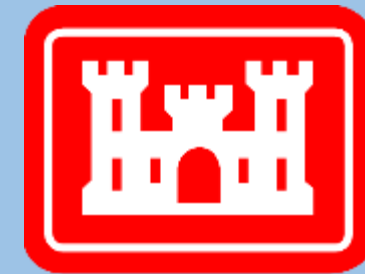


# Community Advisory Group

Raymark Industries,  
Inc. Superfund Site  
Stratford, CT

Jim DiLorenzo, EPA  
Mike Looney, USACE  
Rachel MacPhee, USACE

November 30, 2022



**US Army Corps  
of Engineers®**

To download presentation slides visit:

**[Stratfordct.gov/Raymark](http://Stratfordct.gov/Raymark)**

# Hybrid Meeting Guidelines

## Virtual Attendees:

- Everyone will be muted throughout the presentations - please stay muted to eliminate background noise.
- Hold questions until the end of the meeting.
  - Use the chat box.
  - -Mute yourself after speaking

## Everyone:

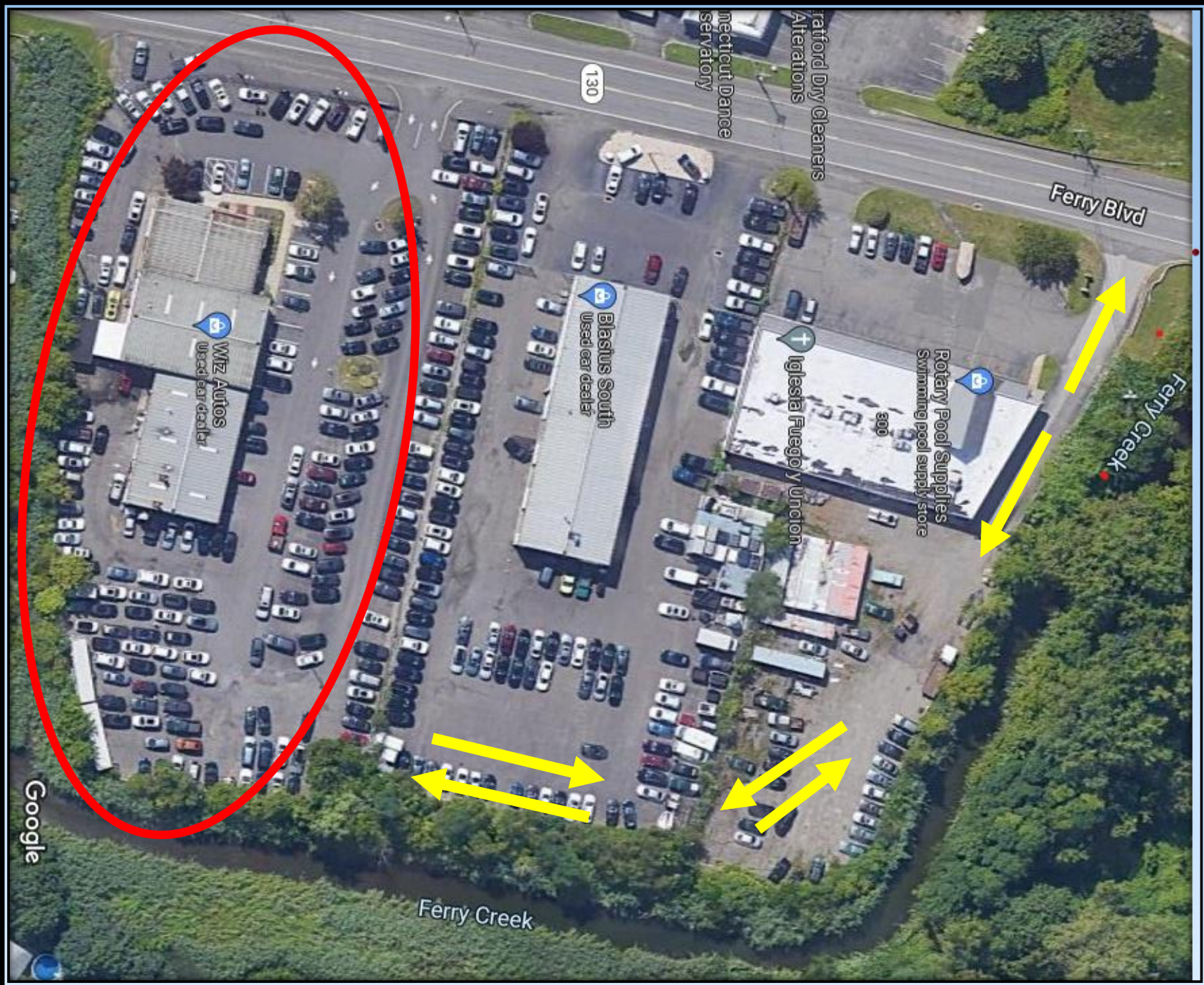
- Ask questions related to the presentation topic
- Please be respectful of time, so everyone has a chance to speak
- Be respectful and patient!
- Talk one at a time.
- **This meeting will be recorded.**

# AGENDA

- INTRODUCTIONS AND MEETING RULES
- OPERABLE UNIT 6 (OU6) UPDATES
- RAYBESTOS MEMORIAL FIELD (OU4)
- AIR MONITORING/TRAFFIC ROUTE UPDATES
- STORMWATER CONVEYANCE SYSTEM
- OVERALL PROJECT SCHEDULE



# OU6 Updates



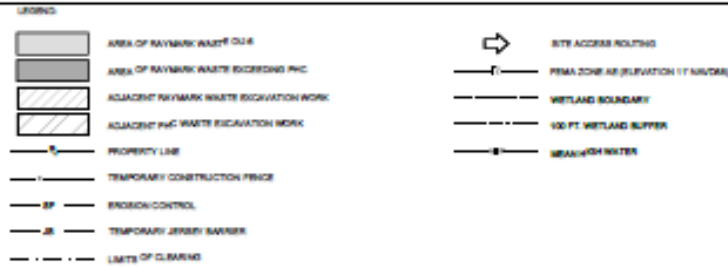
# Wiz Auto

## 250 Ferry Blvd

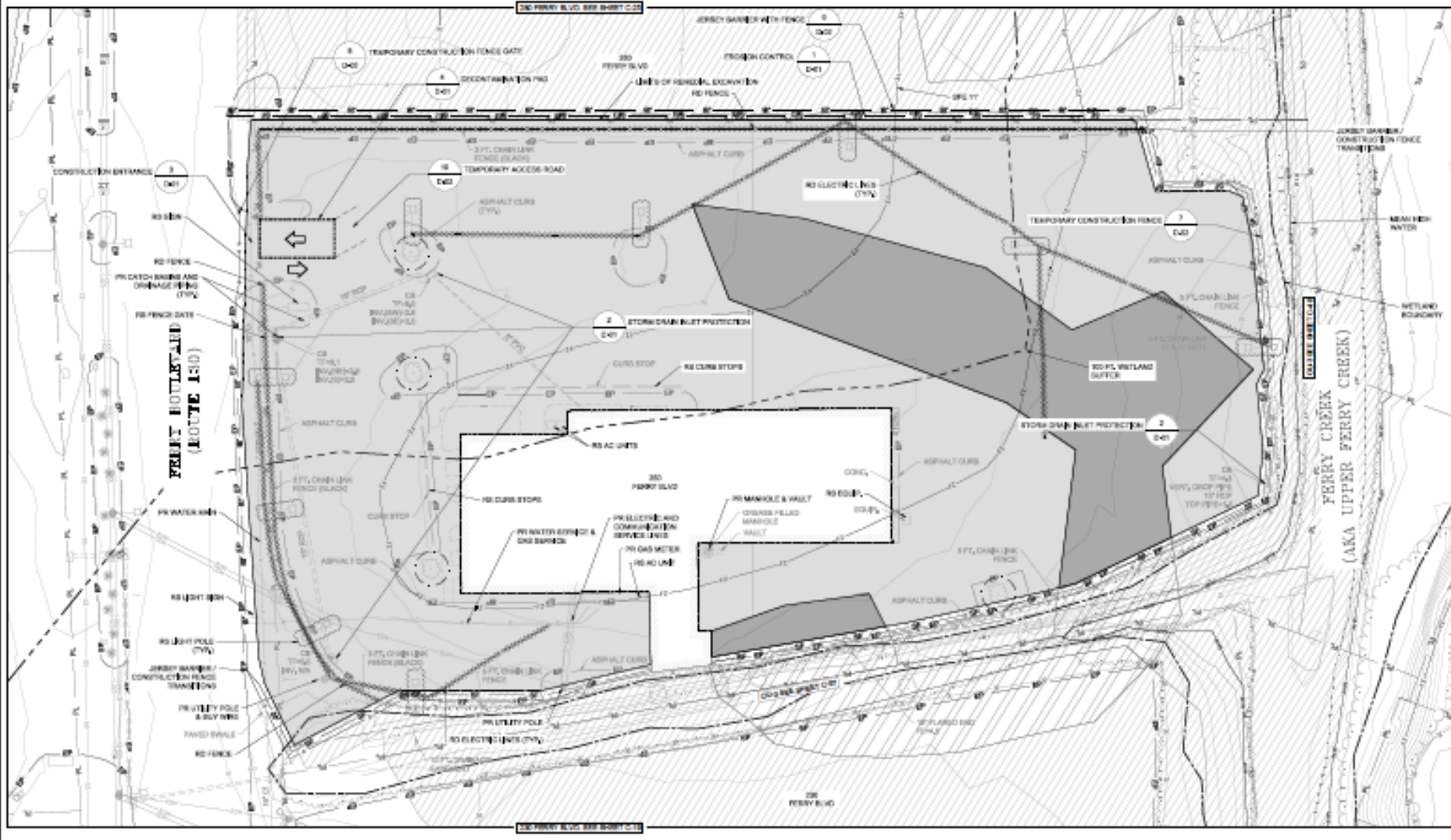
- Started on Sept 21
- Phased approach
- Excavation completed just before Thanksgiving
- Working on restoration
- **RW: 9,431cy** (687 trucks)
- **PHC: 1,817cy** (161 trucks)



- NOTES:
- FOR GENERAL NOTES AND TYPICAL LEGENDS SEE SHEET C-22
  - THE WORK AREA IS WITHIN THE FEMA 500 FLOOD PLAIN, THEREFORE RESTORATION GRADES SHALL NOT EXCEED PRECONSTRUCTION GRADES
  - CONTRACTOR SHALL MINIMIZE WORK IN PREVIOUSLY RESTORED AREAS, DAMAGE TO PREVIOUSLY RESTORED AREAS WILL BE AT CONTRACTOR'S EXPENSE
  - CONTRACTOR SHALL COORDINATE WORK WITH ADJACENT WORK AS TO ELIMINATE REDUNDANT MINOR DUE TO LACK OF COORDINATION WILL BE AT CONTRACTOR'S EXPENSE
  - CONTRACTOR SHALL ACQUIRE ROAD CLOSURE PERMITS INCLUDING REQUIRED POLICE DETAILS AND REQUIRED TRAFFIC MANAGEMENT PLAN



KEY MAP



PROJECT  
 REMEDIAL DESIGN DRAWINGS  
 RAYMARK SUPERFUND SITE  
 Stratford, Connecticut

CLIENT



US Army Corps  
 of Engineers  
 New England District

CONSULTANT

AECOM  
 100 Brookfield Drive Suite 100  
 Wallingford, CT 06497-0813  
 860.226.8600 ext. 4000  
 www.aecom.com

REGISTRATION

100%  
 DESIGN

ISSUE/REVISION

NO.	DATE	DESCRIPTION
1	08/02/10	10% DESIGN
2		
3		

PROJECT NUMBER

805888-0-4

SHEET TITLE

EXISTING CONDITIONS / SITE  
 PREPARATION PLAN - CUE - PLATE 2  
 200 FERRY BOULEVARD

SHEET NUMBER

C-22

# Wiz Auto

RW: light gray

PHC: dark gray



# Temporary Haul Road Behind The Wiz









# 1 of 3 Air Monitoring Stations at The Wiz.

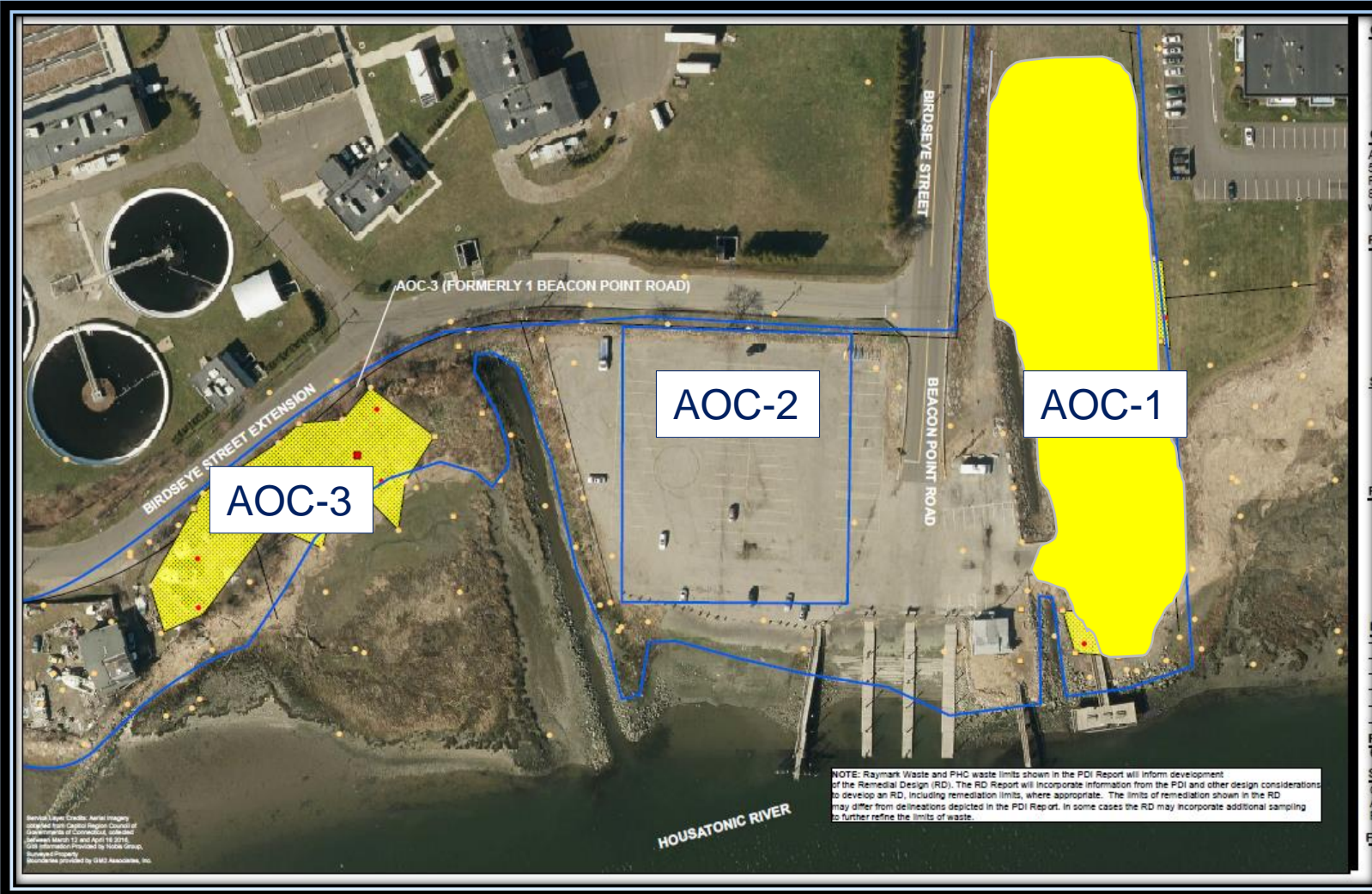




# Warning Fabric



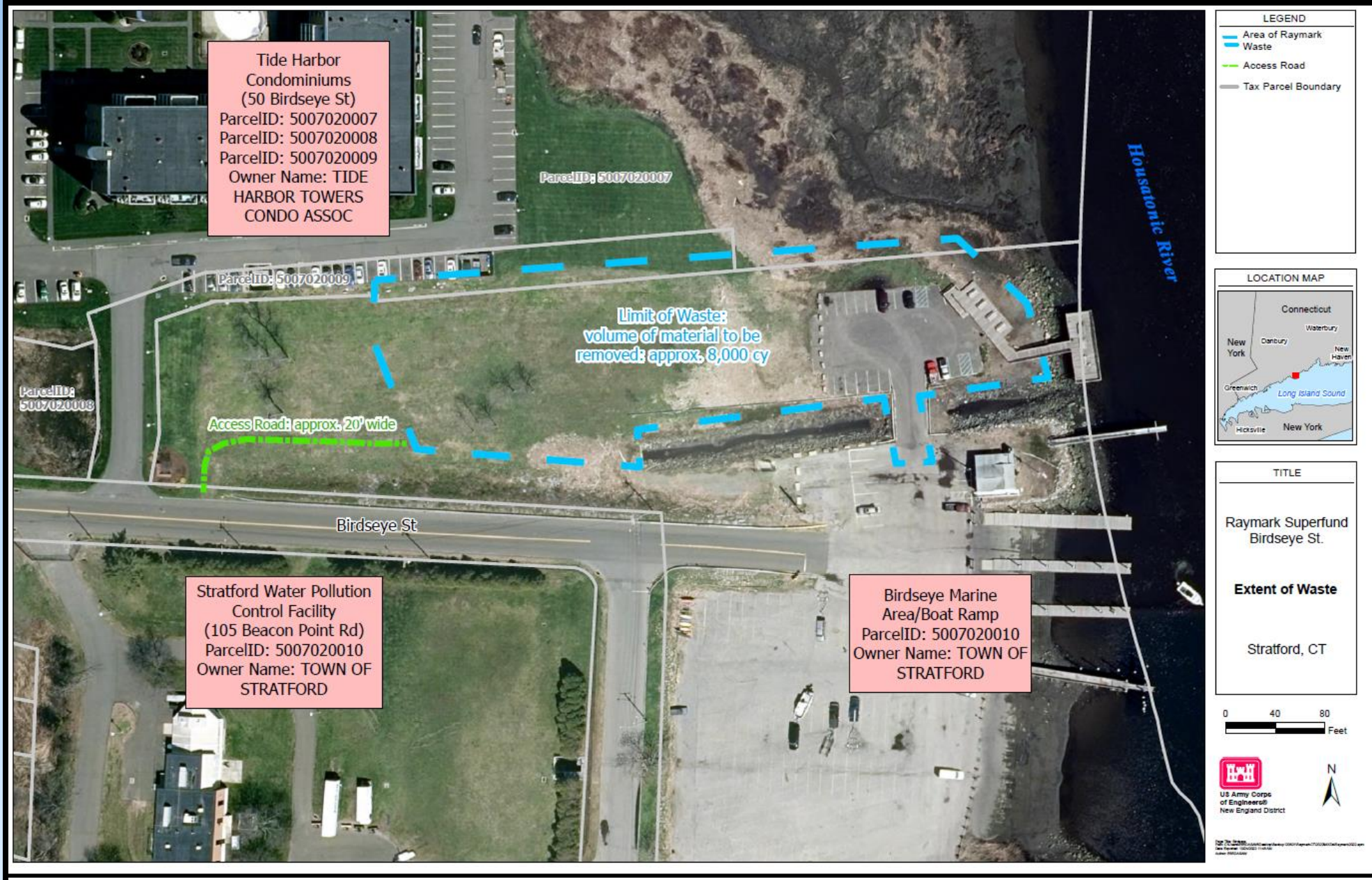
# Beacon Point Area (December to May 2023)



- 3 Areas of Concern (AOCs)
  - AOC-1: Town and Condo
  - AOC-2: 2011 ROD/ELUR in place
  - AOC-3: Town and Private Boat Yard
- RW: est 11,000 yds (700 lds)
- PHC: est 250 yds (20 lds)
- Coastal Resiliency
  - Raise elevation by 1 foot
  - Excavate 3ft; replace 4ft



# Beacon Point AOC-1



- Began excavation on Nov 28
- Access road to avoid boat ramp
- Recreational doc to be removed and replaced
- Rip rap enhanced
- Parking lot to be reshaped to pull back from wetland
- Parking lot to be raised one foot re: coastal resiliency
- Est. March 2023

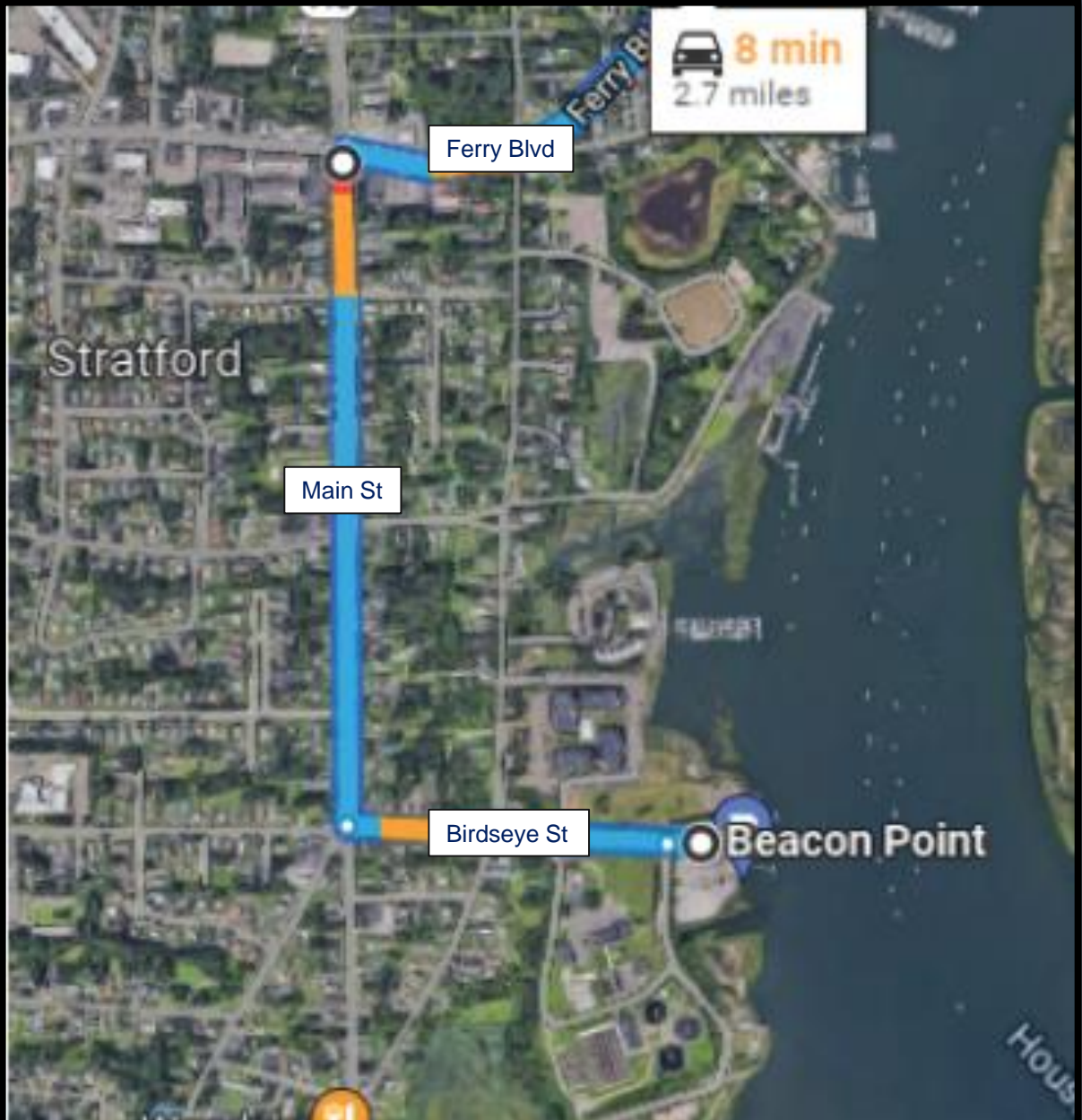
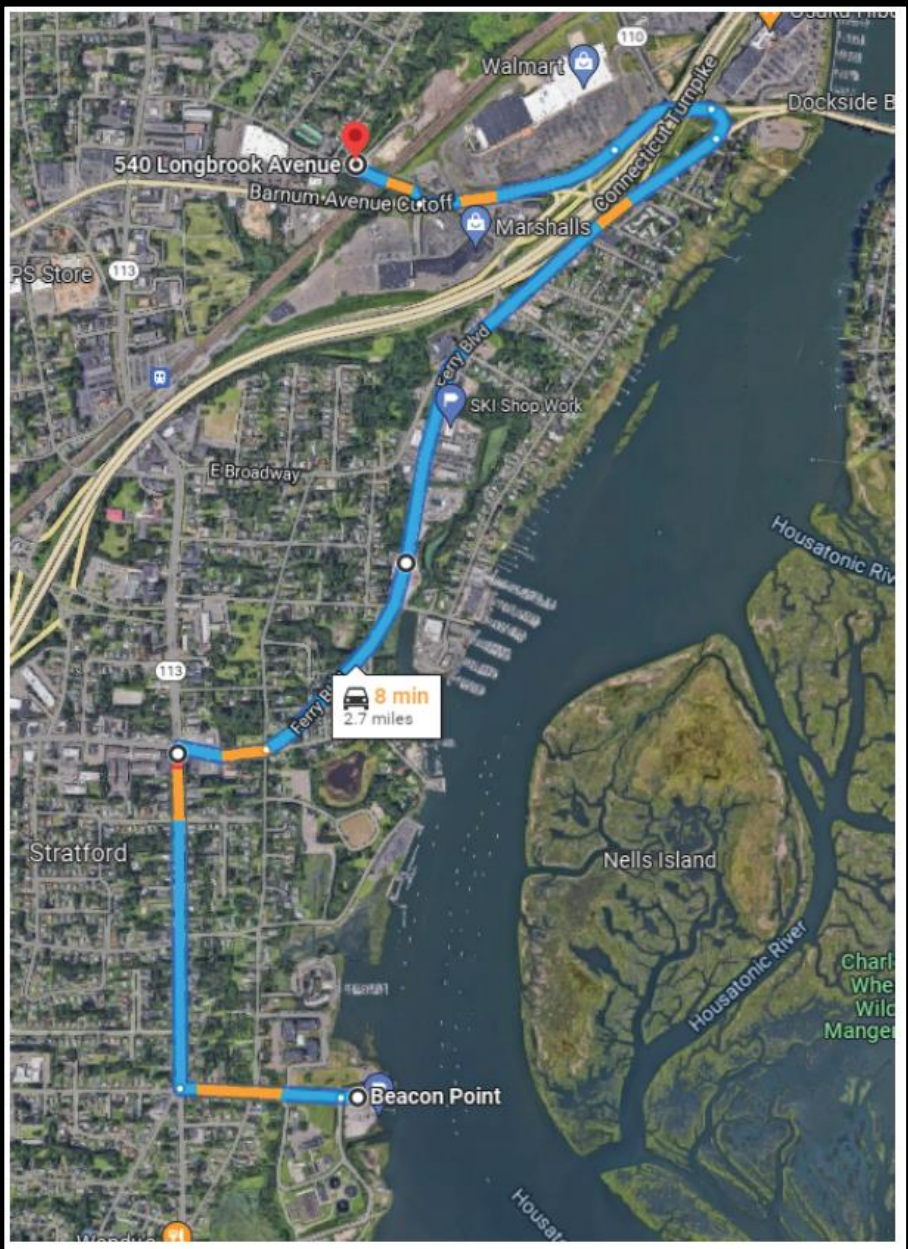


# Start of Excavation at Beacon Point AOC-1



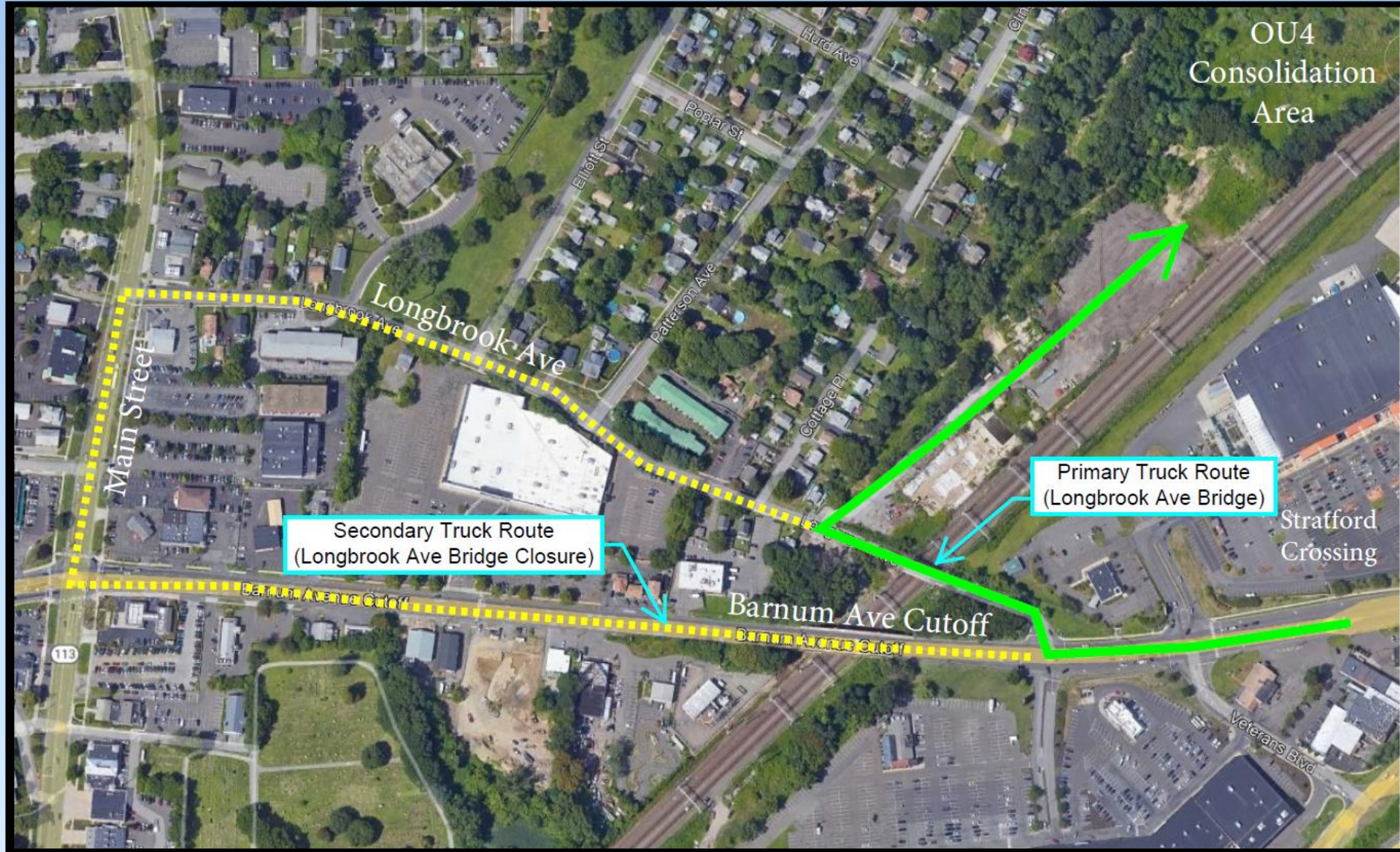


# Beacon Point Truck Route





# Longbrook Ave TEMP Road Closure



OU6 Area	Location	Excavation Dates	Volume (cy)	Number of truck trips?	Number of Properties	Notes
Glyne Manufacturing	380 East Main	Sept 16 -17, 2020	51.70	4	1	Phase 1 ELUR needed
Karate Studio	190 Ferry Boulevard	Dec 2 - 10, 2020	87.31	10	1	Phase 1 ELUR needed Not in 2016 ROD
Liquor Store	200 Ferry Boulevard	Dec 2 - 10, 2020	481.83	64	1	Phase 1 ELUR needed
DOT ROW along 190/200 Ferry Blvd	190/200 Ferry Boulevard ROW	Dec 2 - 10, 2020	109.30	11	1	Phase 1 ELUR needed Not in 2016 ROD
DOT Exit 33	Barnum Ave	Jan 19 – 20, 2021	345.57	19	1	DOT via Haul Road Not in 2016 ROD
Ashcroft (front), Dry Cleaner and Hair Salon	250, 304 and 340 East Main Street	Feb 16 – April 19, 2021	2,785.3	251	3	Phase 1 ELUR needed
			794.60	60	3	To Emelle, AI
302/350 East Main Street	302/350 East Main Street	Sept 15 - 16, 2021	127	9	2	Phase 2 ELUR needed Not in 2016 ROD
DOT ROW	Ferry Blvd and East Broadway	Sept 20 to Oct 1, 2021	430	47	1	Phase 2
		Supp on March 31, 2022	48	6		
171 Ferry Blvd	Snaxx Plus Convenience Store	October 4 to 19, 2021	389	41	1	Phase 2 ELUR needed Not in 2016 ROD
Ashcroft Rear	250 East Main Street	June 9 to Nov 3, 2021	9,281	745	1	Phase 2 ELUR needed Not in 2016 ROD
			377	35	1	To FTS/bind lead
Wooster Park	Quail Street	Nov 9, 2021 to Jan 5, 2022	4,872	433	1	Phase 2 ELUR needed
			130	15	1	To FTS/bind lead
Vacant Lots	Behind 326 FB	Jan 18 to May 11, 2022	9,622	905	2	Phase 2 ELUR needed
			1,362	121	2	To FTS/bind lead
Hitchcock Marine	230 Ferry Blvd	June 13 to July 27, 2022	4,974	457	1	Phase 3 ELUR needed Septic to sewer replacement
			715	72	1	To FTS/bind lead
Wiz Auto	250 Ferry Blvd	Sept 21 to Nov 22, 2022	7,897	687	1	Phase 3 ELUR needed
			1,818	161	1	To FTS/bind lead
<b>TOTALS TO DATE =</b>		<b>Raymark Waste</b>	<b>41,114</b>	<b>3,568</b>	<b>18</b>	
		<b>PHC Waste</b>	<b>5,197</b>	<b>464</b>	<b>9</b>	

# OU6 Remediation Tracking Table

PHC volumes in RED font

# Remaining OU6 Properties



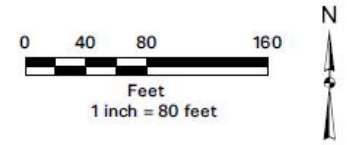
# Lockwood Ave (June to August 2023)



- Note:**
1. Raymark Waste and Non-Raymark Waste borings, and RW Areas from Seed TO Spec Figures.
  2. Raymark Waste and Non-Raymark Waste borings, and RW Areas from the Remedial Design Drawings and Pre-Design Investigation.
  3. Property boundaries are derived from the Remedial Design Drawings.
  4. Raymark Waste designation in historical samples are based on the Raymark Waste Criteria.

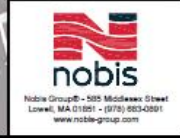
**Legend**

- Confirmation Boring Type**
- ◆ To be collected
- AECOM PDI Samples**
- Raymark Waste
  - Non-Raymark Fill
- Historic Samples 0-4'**
- Raymark Waste
  - Non-Raymark Fill
- PHC Waste Limits**
- ▨ PHC Waste Limits
  - ▨ Raymark Waste Limits



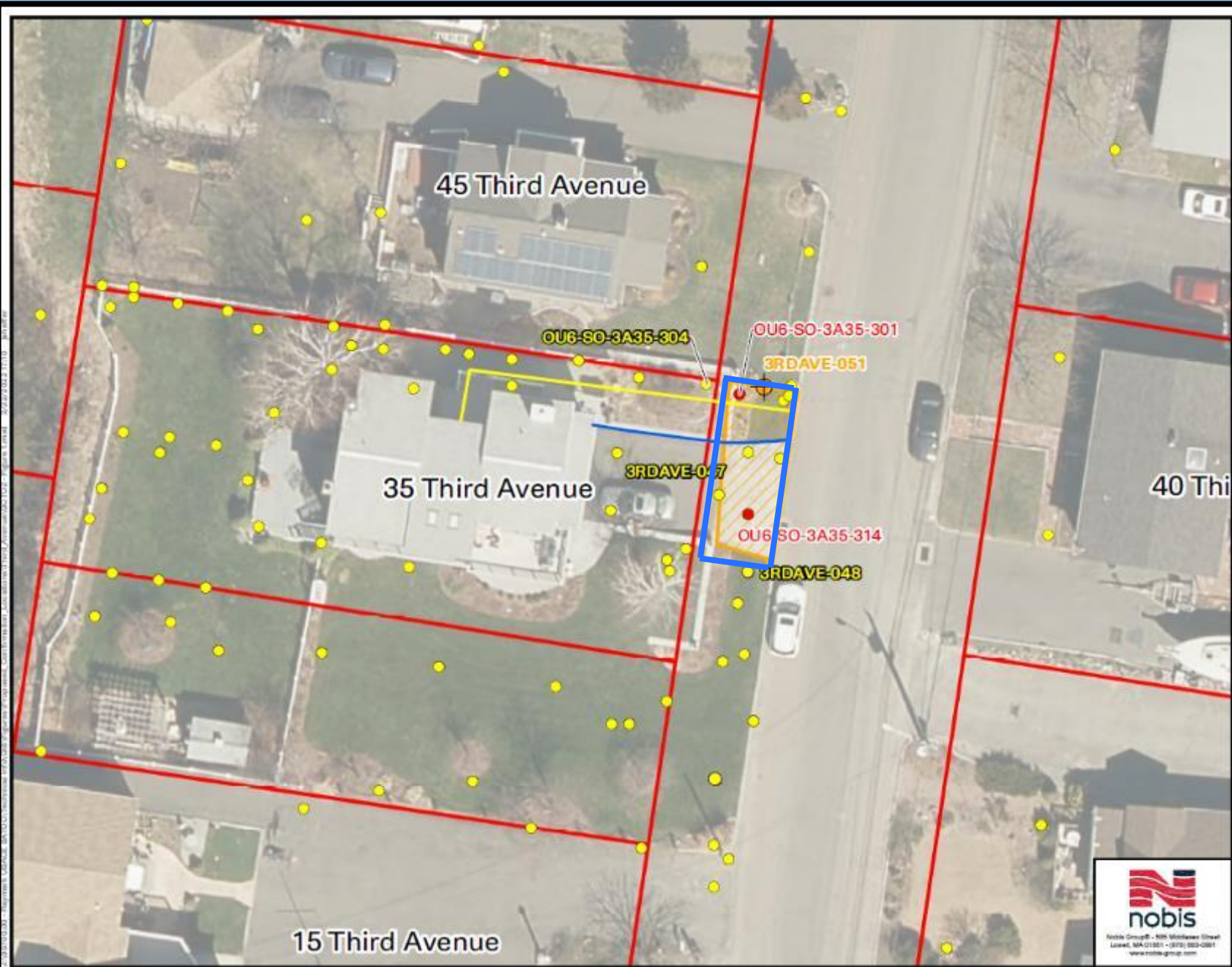
**FIGURE 1**

PROPOSED SAMPLE LOCATIONS  
 LOCKWOOD AVENUE  
 RAYMARK SUPERFUND SITE  
 STRATFORD, CONNECTICUT



PREPARED BY: JTS	CHECKED BY: AR
PROJECT NO. 95700.00	DATE: NOVEMBER 2021

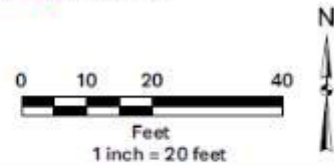




- Note:**
1. USACE evaluation of sample results determined that sample did not meet all thresholds for step-out criteria and further step-out sample collection is not required.
  2. USACE evaluation of sample results determined that sample met all thresholds for step-out criteria and further step-out sample collection is required.
  3. Raymark Waste and Non-Raymark Waste borings, and RW Areas from the Remedial Design Drawings and Pre-Design Investigation.
  4. Property boundaries are derived from the Remedial Design Drawings.
  5. According to FEMA's National Flood Hazard Layer, the property 35 Third Avenue and parcels to the north, east, and south are located in the AE EL-11 Floodplain. Parcels to the west are located in the VE EL-14 Floodplain.
  6. Historical Samples 0-4' include samples collected from the following intervals: 0-4' bgs, 1-4' bgs, 2-4' bgs, 1-3' bgs, 2-3' bgs, and 3-4' bgs.
  7. Raymark Waste designation in historical samples are based on exceeding the Raymark Waste Criteria.
  8. Locations of site features depicted hereon are approximate and given for illustrative purposes only.

**Legend**

- Proposed Confirmation Boring
  - Post Construction Confirmation Sample
- Raymark Waste detected? (0-4')
  - Yes
  - No
- Historical Samples 0-4'
  - Raymark Waste
  - Non-Raymark Waste
- Water Line
- Natural Gas Line
- Raymark Waste Limits
- Stratford Parcels



**FIGURE 1 - 35 THIRD AVE 0-4FT BGS**



GCTO2  
 35 THIRD AVENUE  
 RAYMARK SUPERFUND SITE  
 STRATFORD, CONNECTICUT

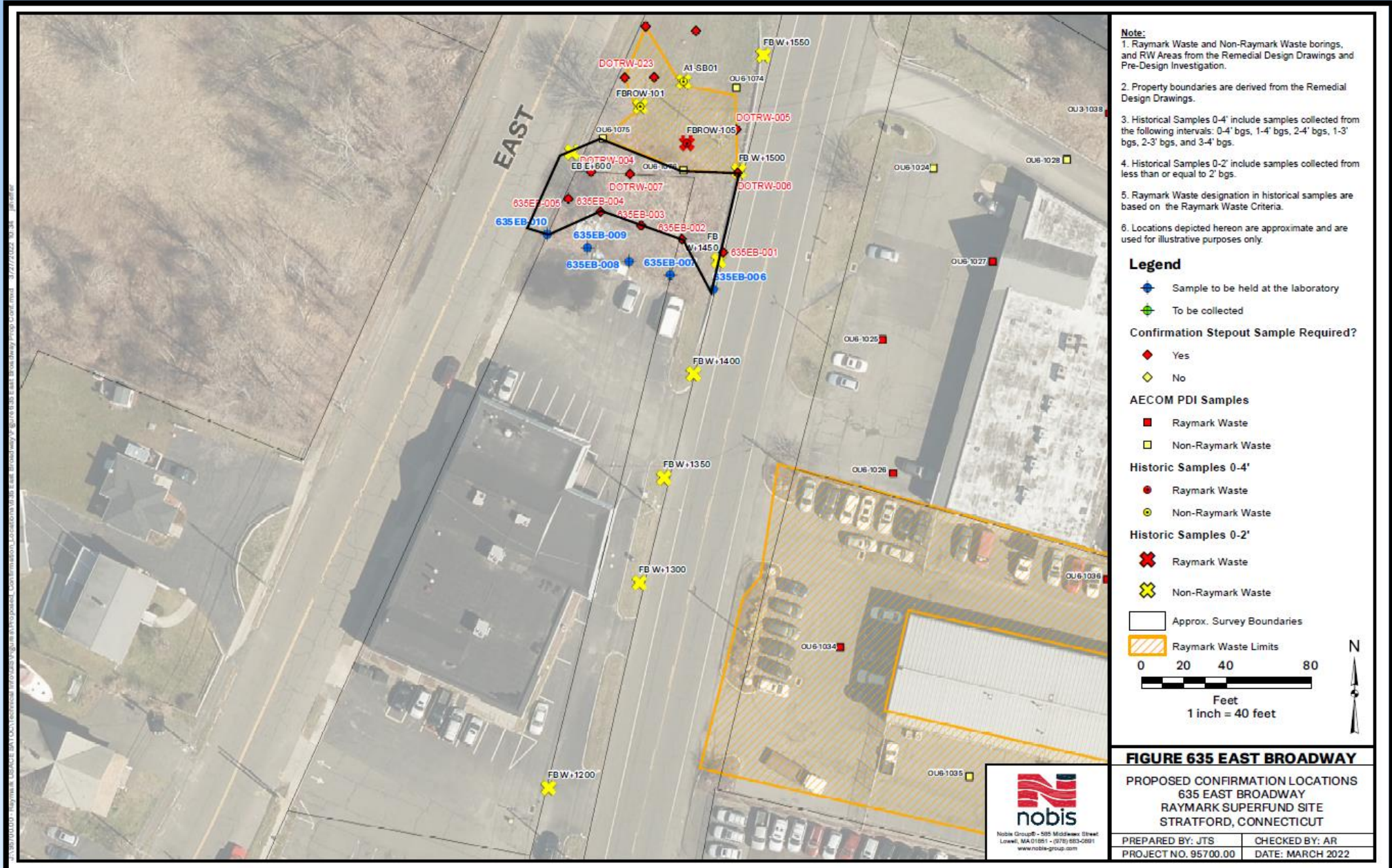
PREPARED BY: JTS	CHECKED BY: AR
PROJECT NO. 95700.00	DATE: FEBRUARY 2022

# Third Ave ROW

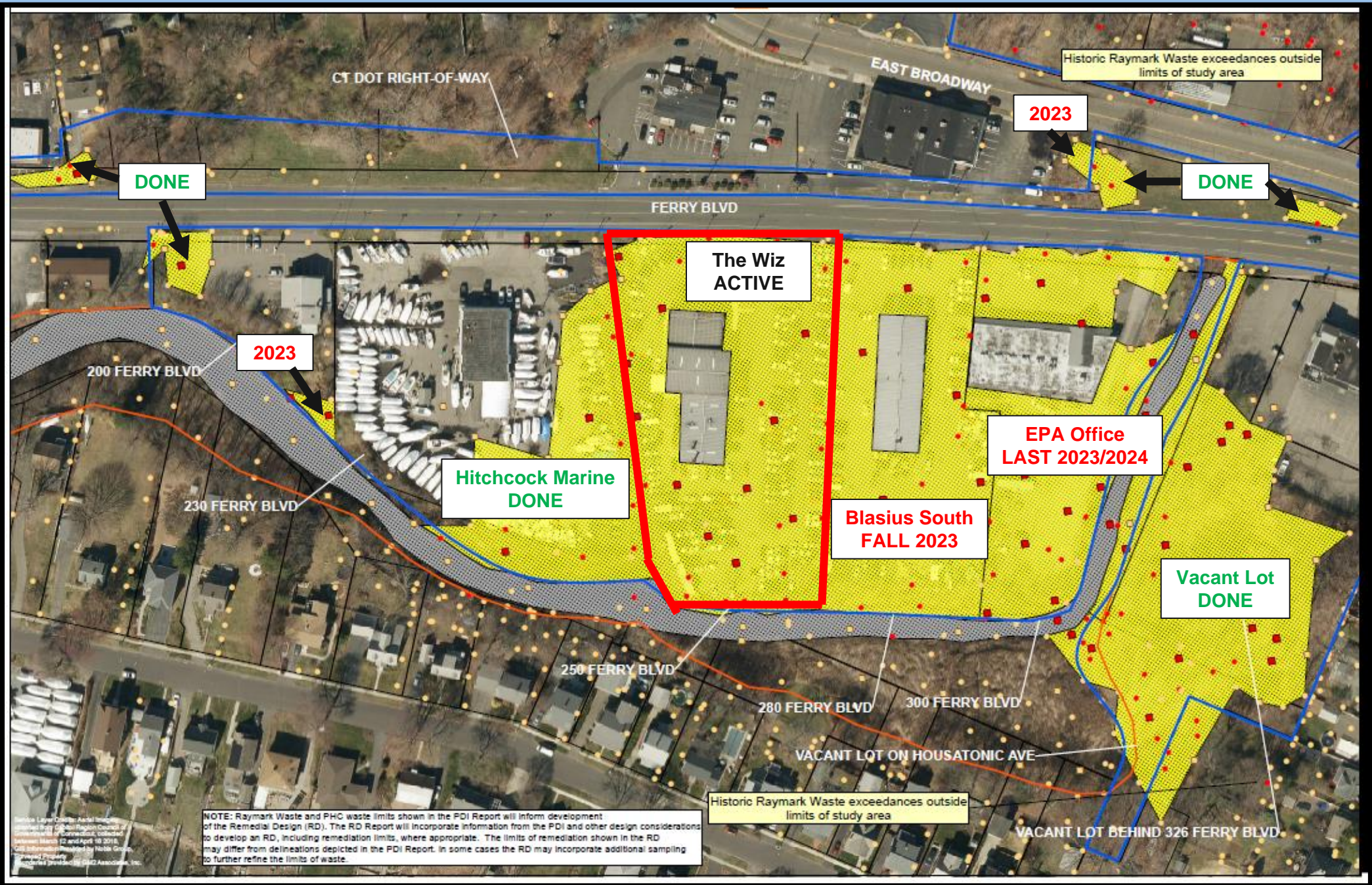
Spring 2023



# 635 Ferry Boulevard (2023)



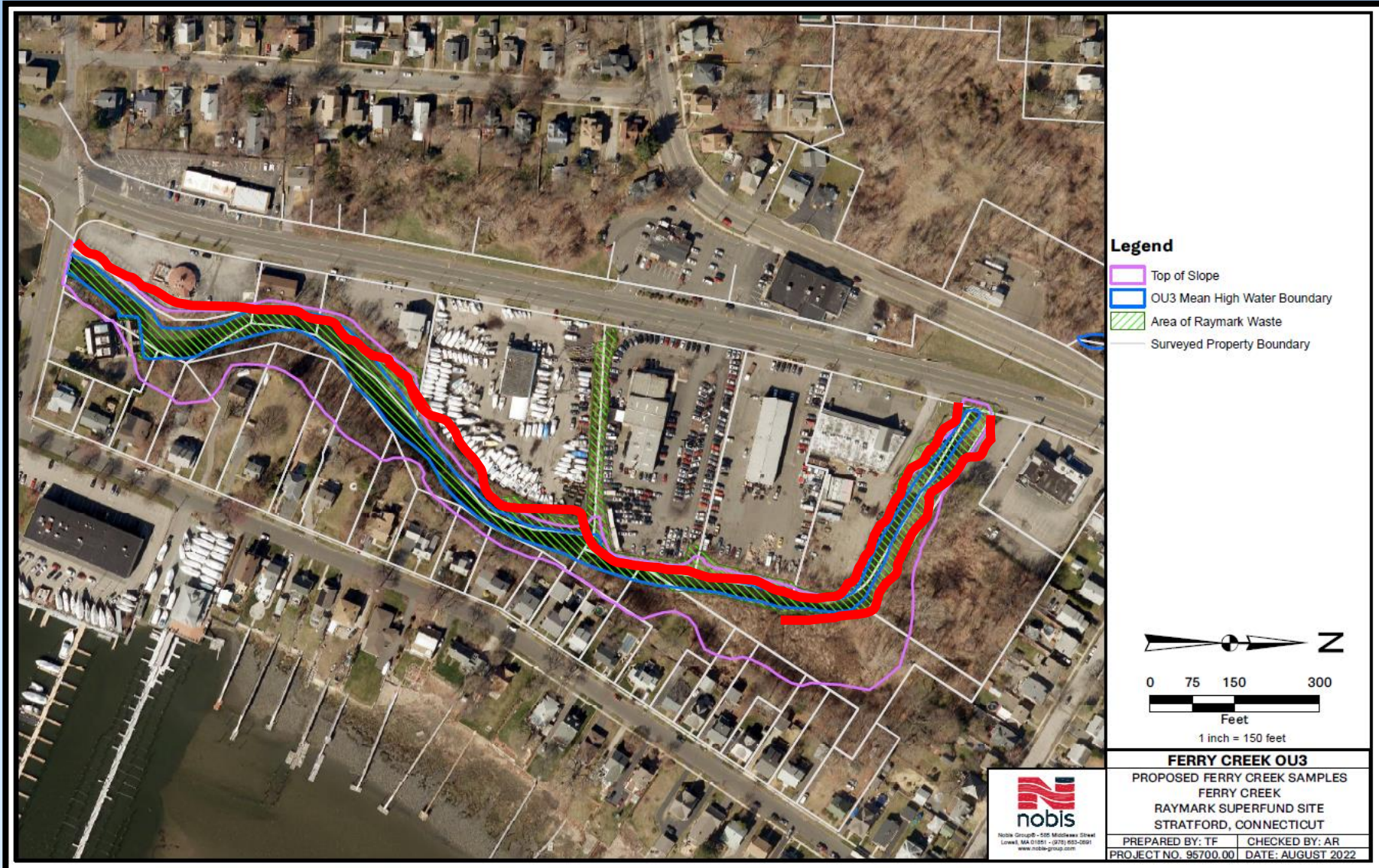






# OU3 Ferry Creek

# Ferry Creek Remediation (2023)



- Ferry Blvd to Broad Street
- About ½ mile
- Channel: 2ft of sediment
- Portions of banks (red): 4ft
- Total volume estimate:
  - Approx. 16,000 CY



# Aerial Photography

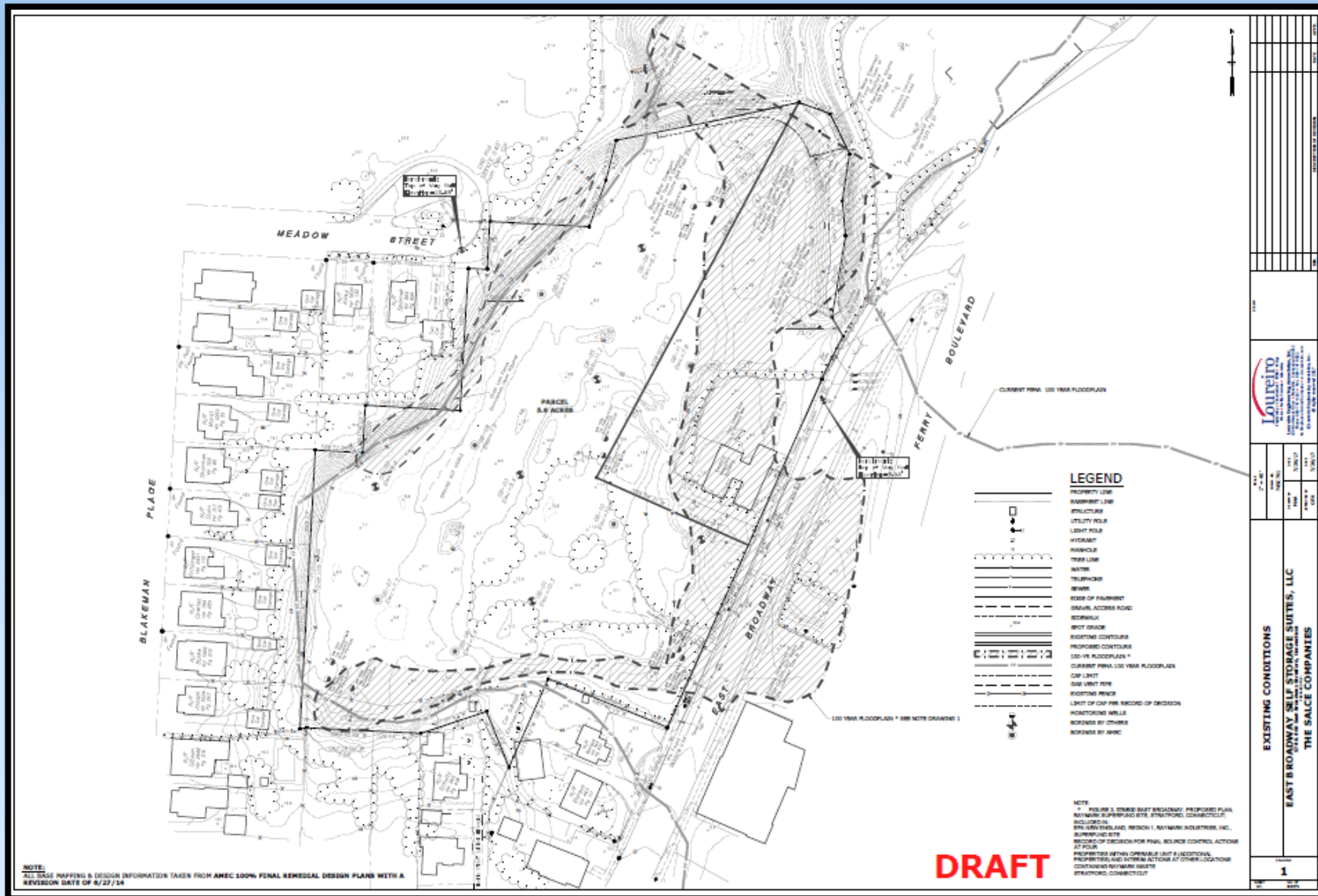
1960



1969



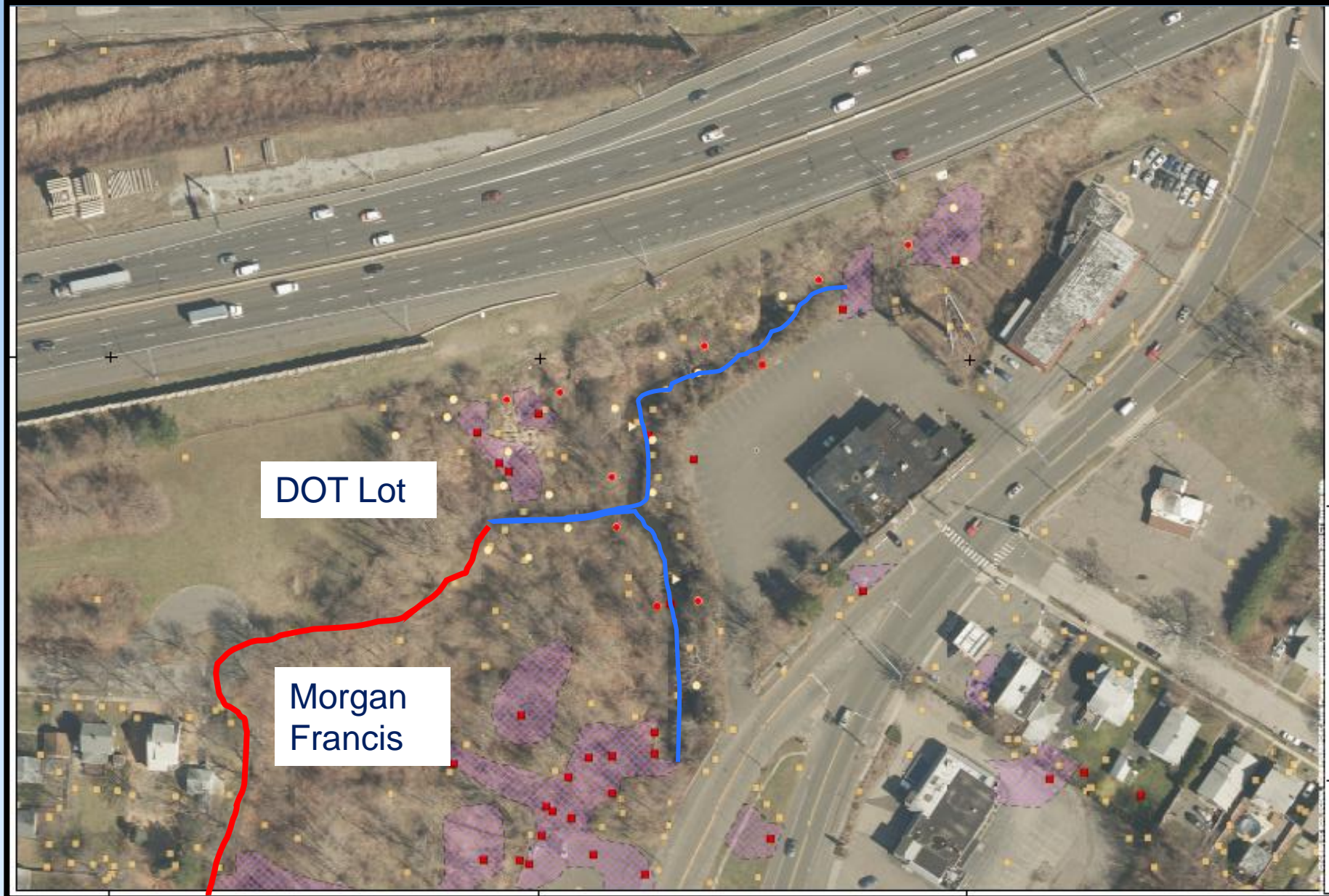
# 576/600 East Broadway - Morgan Francis



- 2011 ROD
  - Cap in place
  - Storage units
- Update design
  - Recreational use
  - Consolidate adjacent RW
- Remedy decision in 2023



# Upper Ferry Creek and DOT Lot



# OU4 Updates



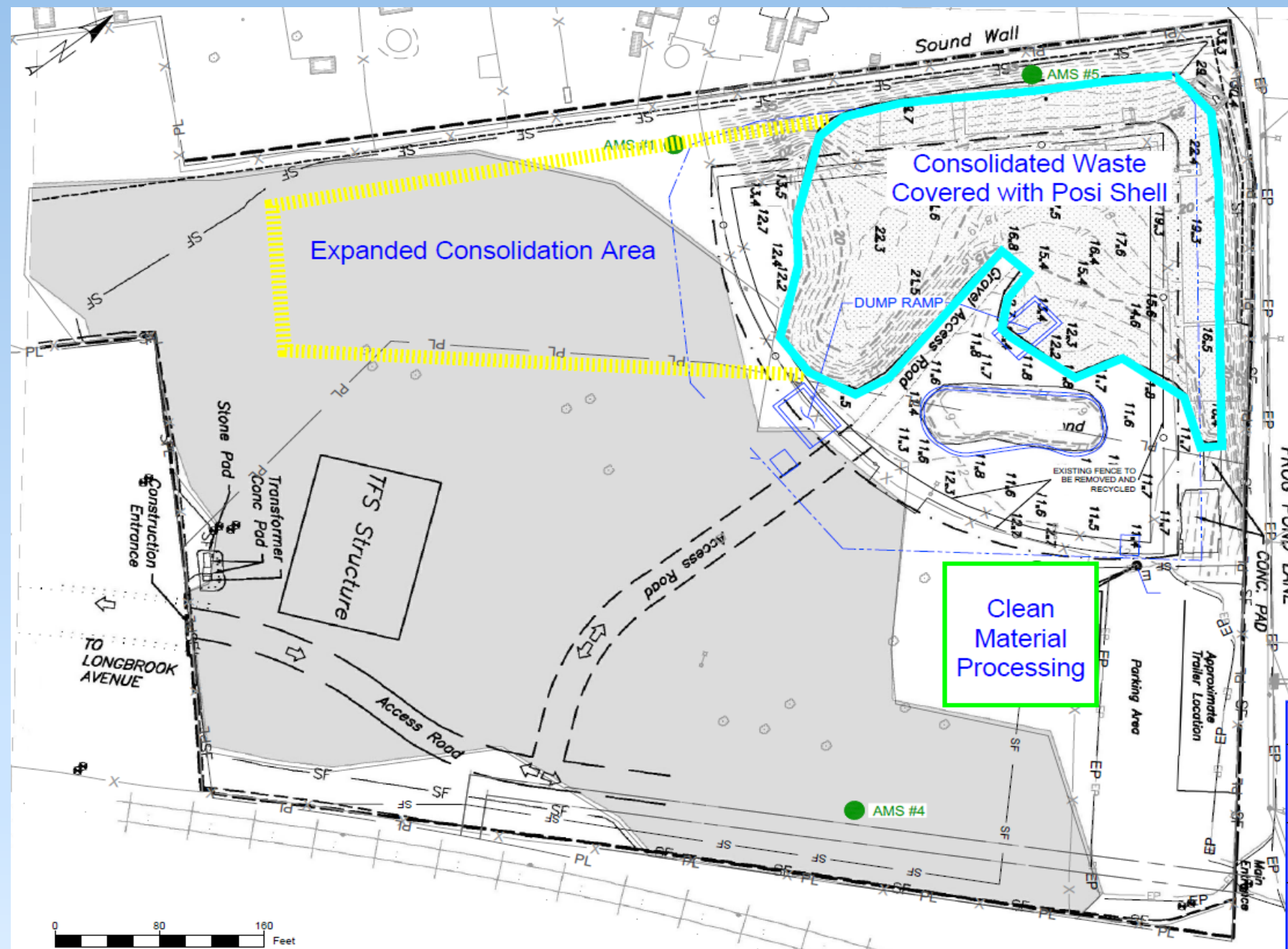
# OU4 Ballfield Work Completed or Ongoing Since September



- Approximately 40,000 CY of material has been consolidated, compacted, and covered to date
- Posi-Shell cover has been applied on all previously imported Raymark Waste at the Ballfield
- Stormwater conveyance line construction underway
- Pumpstation preparatory work is underway
- 5 perimeter air monitors at OU4 are operating daily
- Second live stream camera view available



# OU4 Consolidation Area



- Approximately 40,000 CY of material has been consolidated, compacted and covered
- Active consolidation area accepting material from 250 Ferry Blvd. (Wiz Auto)
- Winter operations - Beacon Point material will be stockpiled
- Posi-shell or approved cover placed over waste at end of each day



# OU4 Consolidation Area



Material Placement



Site Tour Oct. 27

# OU4 Stormwater System



# Stormwater System Upgrades





# Conveyance Line – Box Culvert



Excavation



Installation



# New Pump Station

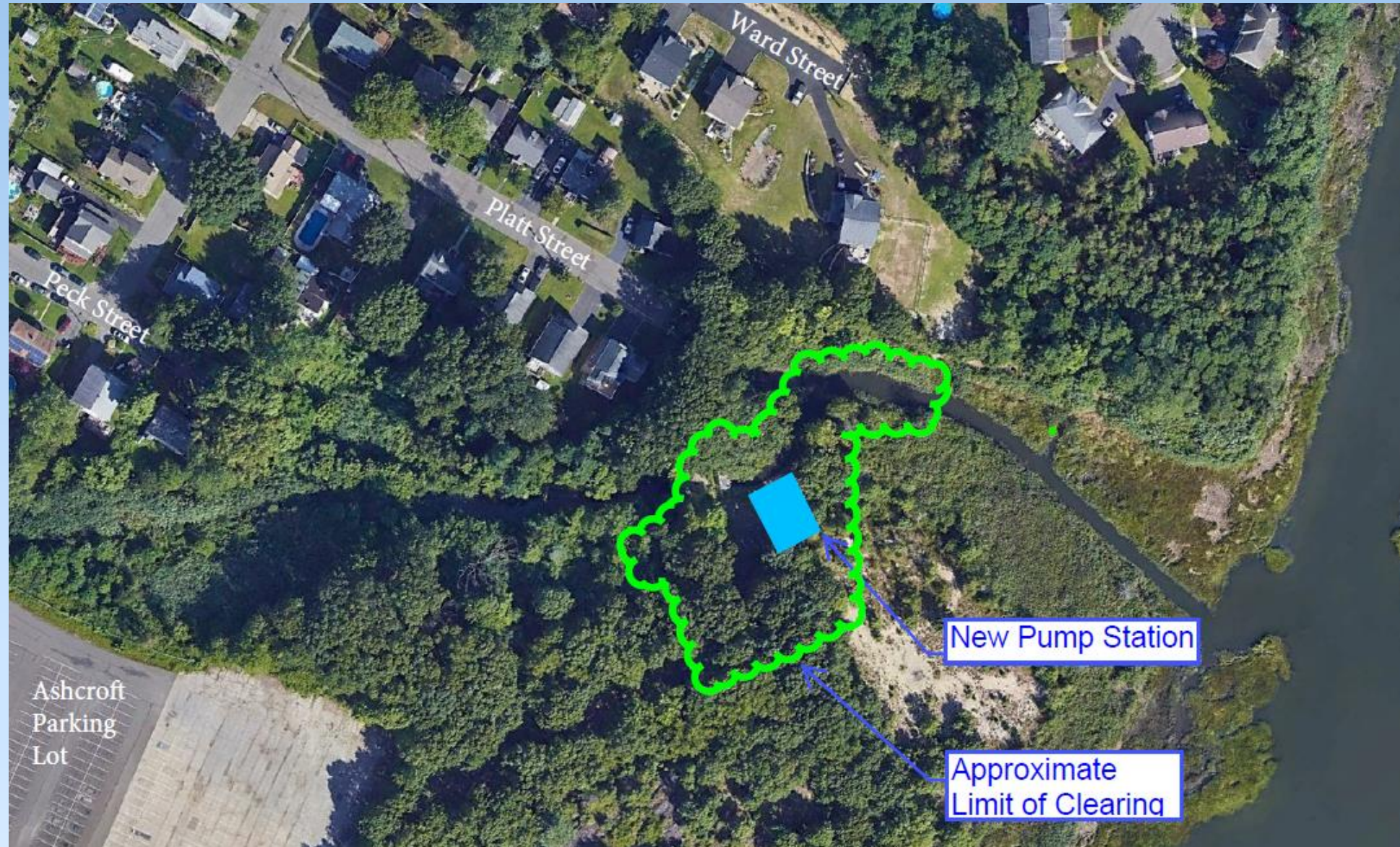
- Contract Awarded to P&S Construction
- Site preparation underway
- Construction duration approximately 24 mo.
- 4 Axial Flow Pumps
- 200 CFS Capacity
- Operates during significant storm and high-water events
- Masonry Pumphouse





# Pumpstation – site work

- Site tree and brush clearing complete
- Erosion control and limited grading complete
- Blasting will be required to remove approximately 5-12' of underground ledge (rock) within the pumpstation footprint.





# Pumpstation – Ledge Removal

- Maine Drilling and Blasting
- Approach is to minimize ground vibrations as much as possible
- Home inspections will be conducted in the vicinity of the work
- The blast plan was submitted by the contractor and is under review
- EPA and USACE will coordinate with homeowners for home inspections
- Vibration monitors will be deployed
- Each blast event will generally occur between 10:00 AM and 11:00 AM
- It is estimated that there will be approximately 10 blast events over a period of 3 weeks
- Work is expected this winter pending plan approval
- Site will be secured from public
- Multiple 6000 lb blasting mats will be utilized





# Air Monitoring



# Raymark Air Monitoring Program

- Dust monitoring protects workers and abutting community
  - Dust Action Levels based on property and type of work
  - Action Levels = 0.014 (OU4) and 0.019 mg/m<sup>3</sup> (OU6) when Raymark Waste handled.
  - Action Level = 0.150 mg/m<sup>3</sup> when only clean soil handled
  - Chemical samples collected for lab analysis when Raymark Waste is handled
  - Low safety threshold – STOP WORK before any potential risk to workers or community
- Vibration monitoring conducted
  - STOP Work = 0.5 inches/second
- Weekly Air Monitoring, Chemical Data and Vibration Monitoring Reports posted on Town Raymark website



Chemical Sampling Port

Dust Monitoring Station



Personnel Monitoring





# Monitored Tasks – OU6

- 250 Ferry Blvd - 5 Dust Meters, 5 Chemical Sample Collection Systems, 1 Vibration Station
  - Excavation of Raymark Waste.
  - Backfill with Clean Imported Material.
  - Site Restoration.

250 Ferry Blvd - Excavation



250 Ferry Blvd – Grading Backfill



250 Ferry Blvd – Demolishing Shed





# Monitored Tasks – OU4

- OU4 - 5 Dust Meters, 5 Chemical Sample Collection Systems, 5 Vibration Stations
  - Accepting new PHC soil from 250 Ferry Blvd.
  - Loading treated PHC soil from 230 Ferry Blvd for offsite transport.
  - Spreading 250 Ferry Blvd material.
  - Applying Posi-Shell.

Offloading PHC soils from 250 Ferry Blvd to the TFS



Applying Posi-Shell to Raymark Waste



Offloading Raymark Waste from 250 Ferry Blvd





# Monitored Tasks – Stormwater Conveyance System (SWC)

- SWC (No Intrusive Work in RW) - 5 Vibration Stations, No Dust Monitoring
  - Water Main relocation at East Main Street
  - Installing force sewer main at Frog Pond Lane
  - Box culvert installation along East Main Street
- A new soil sample was collected in the DPW area. The soil did not meet Raymark Waste criteria, therefore dust monitoring and chemical air sampling are not required for excavation in this area.

excavating along East Main St. for box culvert installation



Installing box culvert at DPW along East Main Street



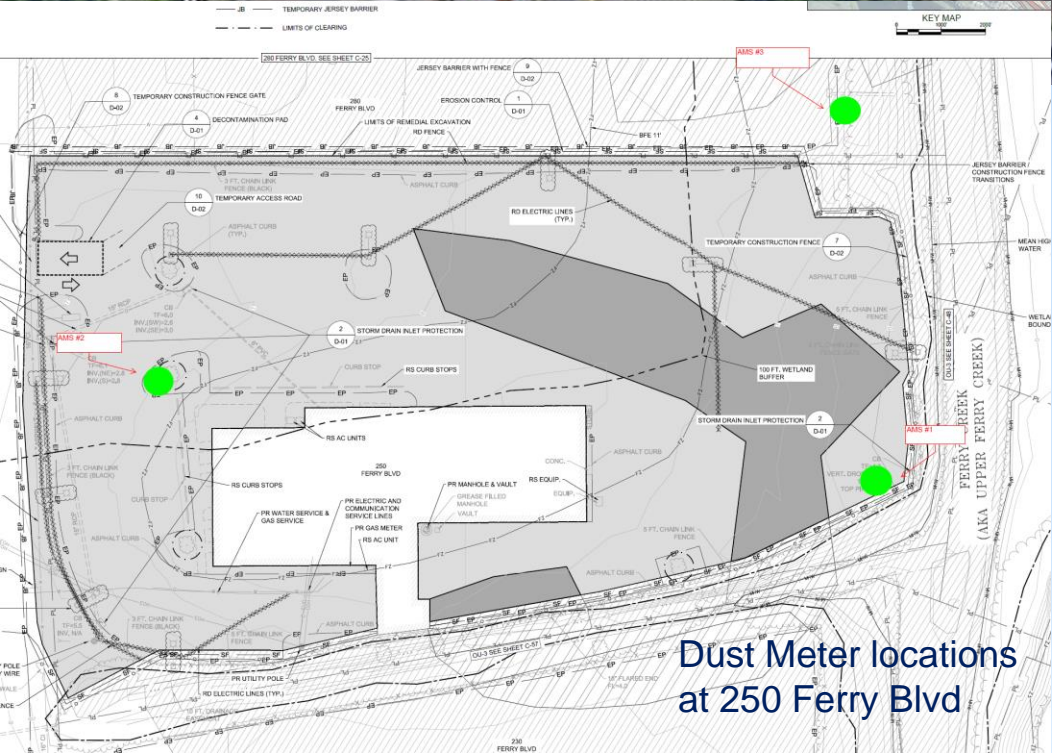
Capping water main at East Main St. for water relocation





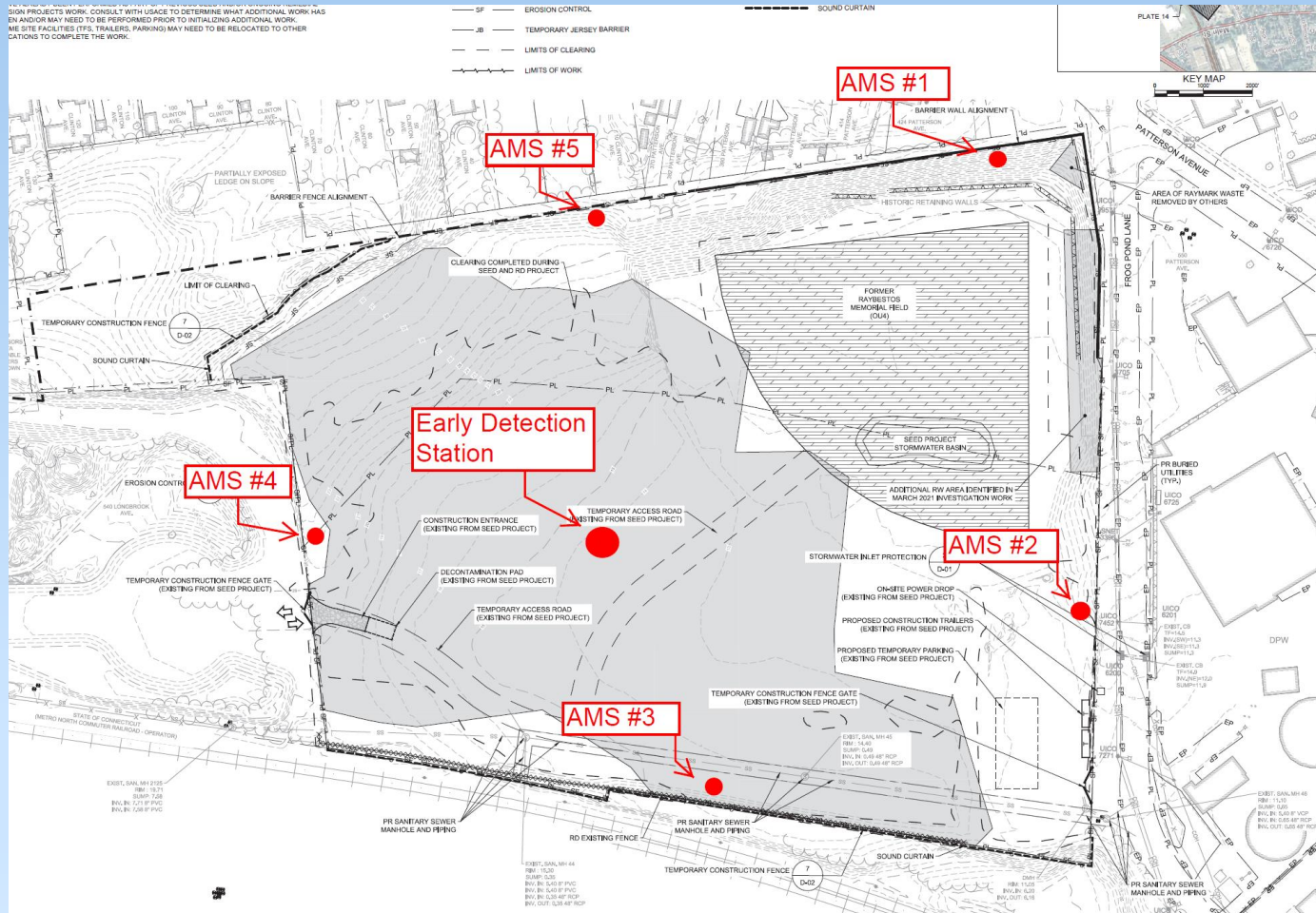
# Air Monitoring Results

- Since 09/28/22 Public Meeting - No Exceedances of OU4 or OU6 Dust Action Level Criteria.
- No Chemical Action Levels Exceeded.
- No Health and Safety Risks to Workers or Residents.
- Vibration exceedances were observed at the Stormwater Channel between 10/31/22 and 11/10/22 due to sheet pile installation at the DPW excavation. Installation of a slide rail alternate shoring system was completed on 11/15/22 and is expected to eliminate future vibration concerns in this area.
  - No residential homes near vibration exceedances.





# Upcoming Changes



- Adding additional meter at OU4 (monitor worker exposure)
- Representative of perimeter and interior work area



# Project Schedule



# Consolidation Remedy Schedule



- OU6

- 2023 Winter/Spring - Beacon Point
- 2023 Summer – Lockwood Ave
- 2023 Fall – Blasius Dealership
- 2023-2024 Winter/last: EPA Office/Former Ski Shop
- TO BE SCHEDULED: 3<sup>rd</sup> Ave ROW and 635 East Broadway

- OU3

- 2023: Ferry Creek (East Broadway to Broad St bridge)

- OU4

- 2024: Construct cap

Construct Stormwater And Pump Station

Morgan Francis Design and Start Remedial Action

OU5, OU7, OU8 and OU9



# Next CAG Meeting January 25 at 6:30pm

For more information about the Raymark Superfund Site, including copies of presentation slides, documents and meeting minutes, please visit: [stratfordct.gov/raymark](http://stratfordct.gov/raymark)

# Happy Holidays!

- Visit [stratfordct.gov/Raymark](http://stratfordct.gov/Raymark) for updates, contact information, air monitoring results, meeting dates, meeting recordings and Powerpoint slides
- Email Alivia at: [acoleman@townofstratford.com](mailto:acoleman@townofstratford.com) with further questions, concerns, feedback or to sign up for email distribution list.