

Community Advisory Group

Raymark Industries, Inc. Superfund Site Stratford, CT

Jim DiLorenzo, EPA
Mike Looney, USACE
Dave Heislein, USACE

November 17, 2021



**US Army Corps
of Engineers®**

Virtual Meeting Guidelines

- Everyone will be muted through the presentations - please stay muted to eliminate background noise.
- Hold questions until the end of each presentation.
- Use the chat box.
- Ask questions related to the presentation topic
- Please be respectful of time, so everyone has a chance to speak
- Mute yourself after speaking
- Be respectful and patient!
- Talk one at a time.
- **This meeting will be recorded.**

AGENDA

- INTRODUCTIONS AND MEETING RULES
- OPERABLE UNIT 6 (OU6) UPDATES
- RAYBESTOS MEMORIAL FIELD (OU4)
- STORMWATER CONVEYANCE SYSTEM
- OVERALL PROJECT SCHEDULE

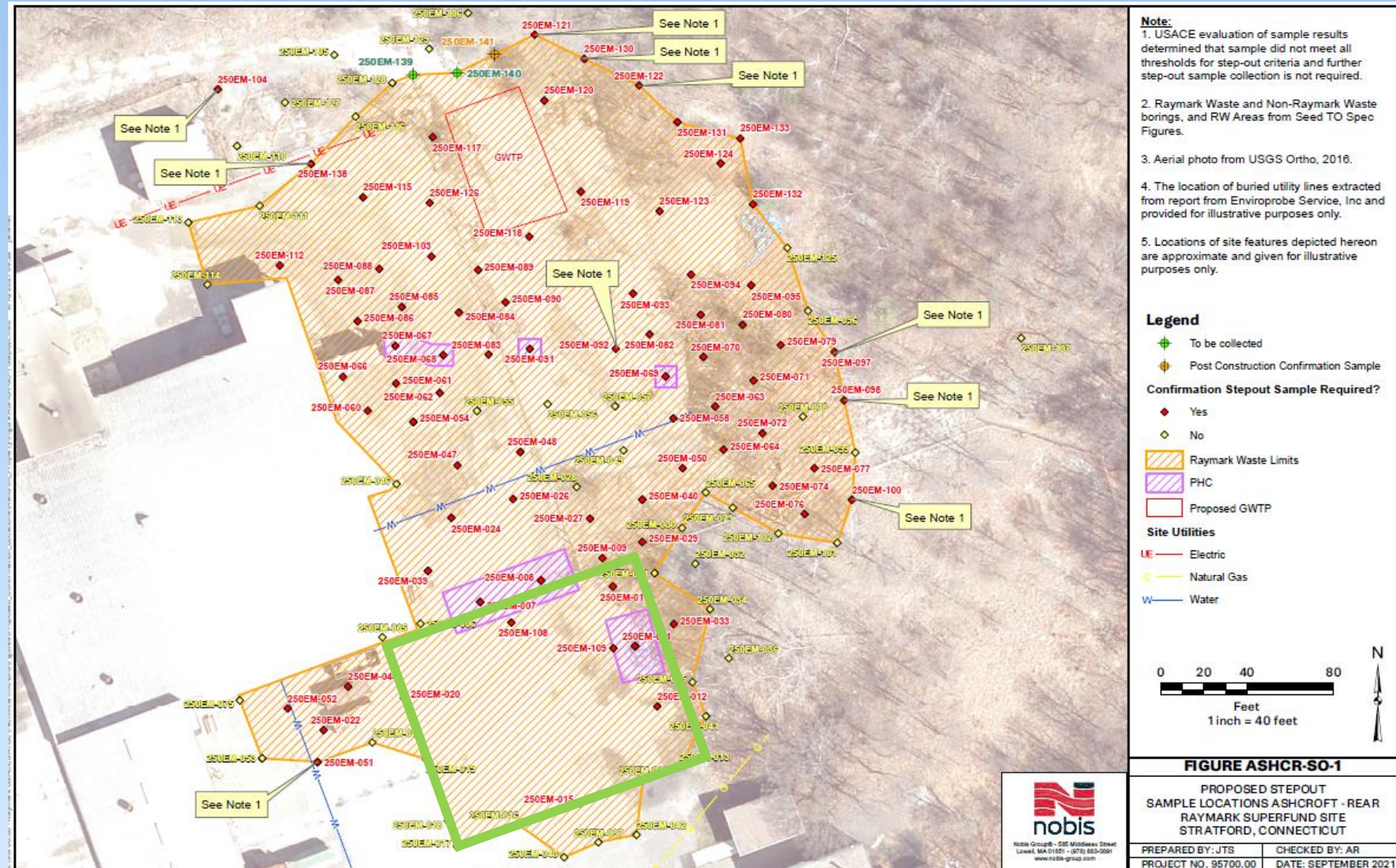
EPA Community Involvement Coordinator Updates

- Thank you, ZaNetta Purnell
- Welcome to Darriel Swatts

OU6 Updates

Ashcroft Rear

- June 9 to Nov 3
- Removed:
 - 9,259yds (745 loads)
 - PHC 377yds (35 loads)
 - 551,589 gallons gw treated
- Complications
 - High water table
 - Record rain/storms
 - Ashcroft deliveries
 - Continued growth in remediation area
- Original estimate:
 - 1,500yds
 - No PHC



Ashcroft Rear Starting Point



High Groundwater



Groundwater Treatment Plant



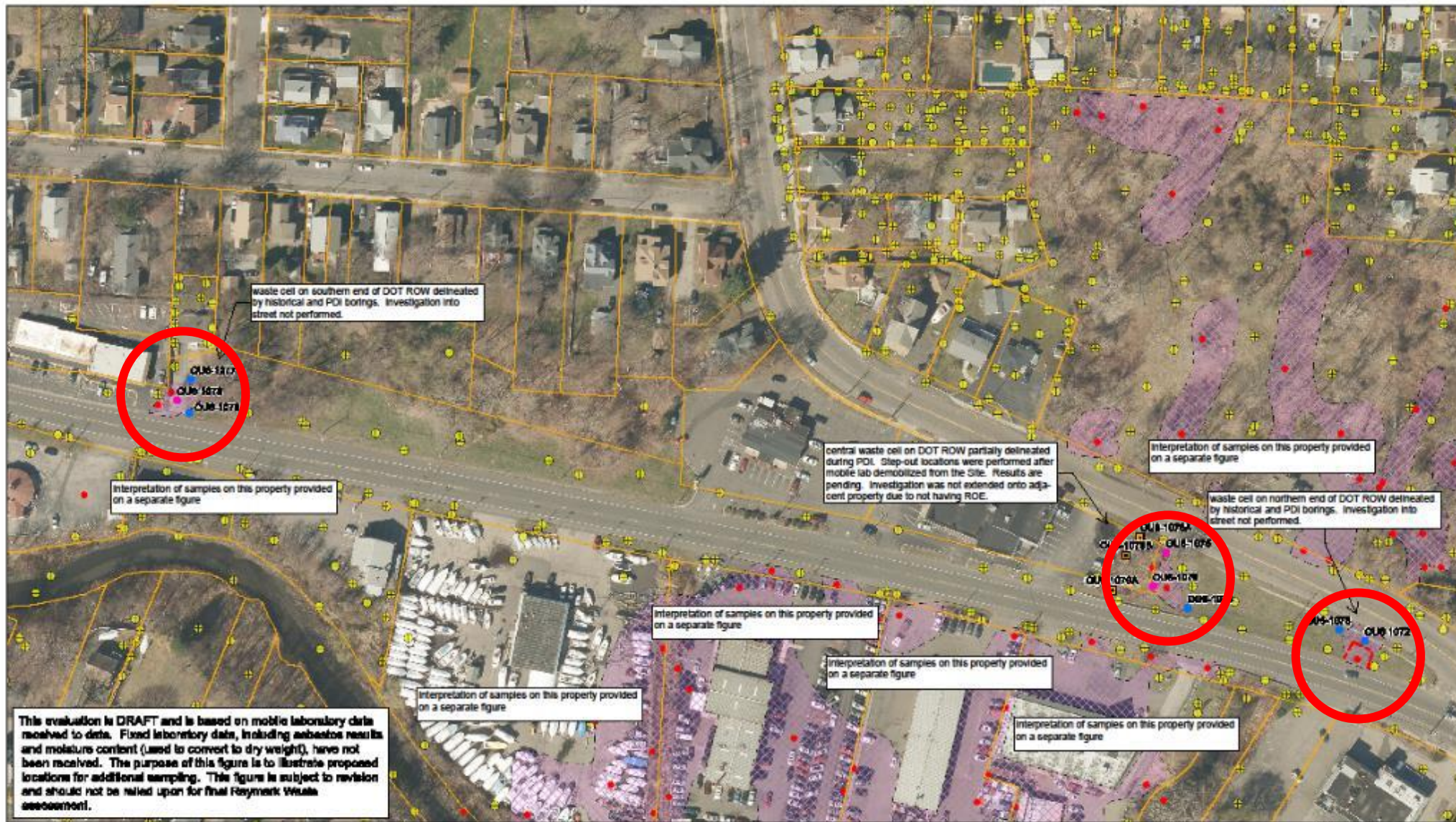
Restored Pavement



DOT ROW and 171 Ferry BLVD

Sept 20 to
Oct 19

819yds
88 truck
trips



This evaluation is DRAFT and is based on mobile laboratory data received to date. Fixed laboratory data, including asbestos results and moisture content (used to convert to dry weight), have not been received. The purpose of this figure is to illustrate proposed locations for additional sampling. This figure is subject to revision and should not be relied upon for final Raymark Waste assessment.

FIGURE:	DRAFT					<ul style="list-style-type: none"> Waste Piling PDI Location Possibly Existing NY Based on Preliminary Data PDI Location Not Confirmed NY Based on Preliminary Data Historic Storage Identifying Potential Waste Historic Storage Not Classified as Raymark Waste 		
	Preliminary PDI Results Raymark Superfund Site Stratford, CT							
	DATE:	DRAWN BY:	PROJECT NUMBER:					
	12/13/2017	GPK	60548686.0.4					



Mobilizing to DOT ROW

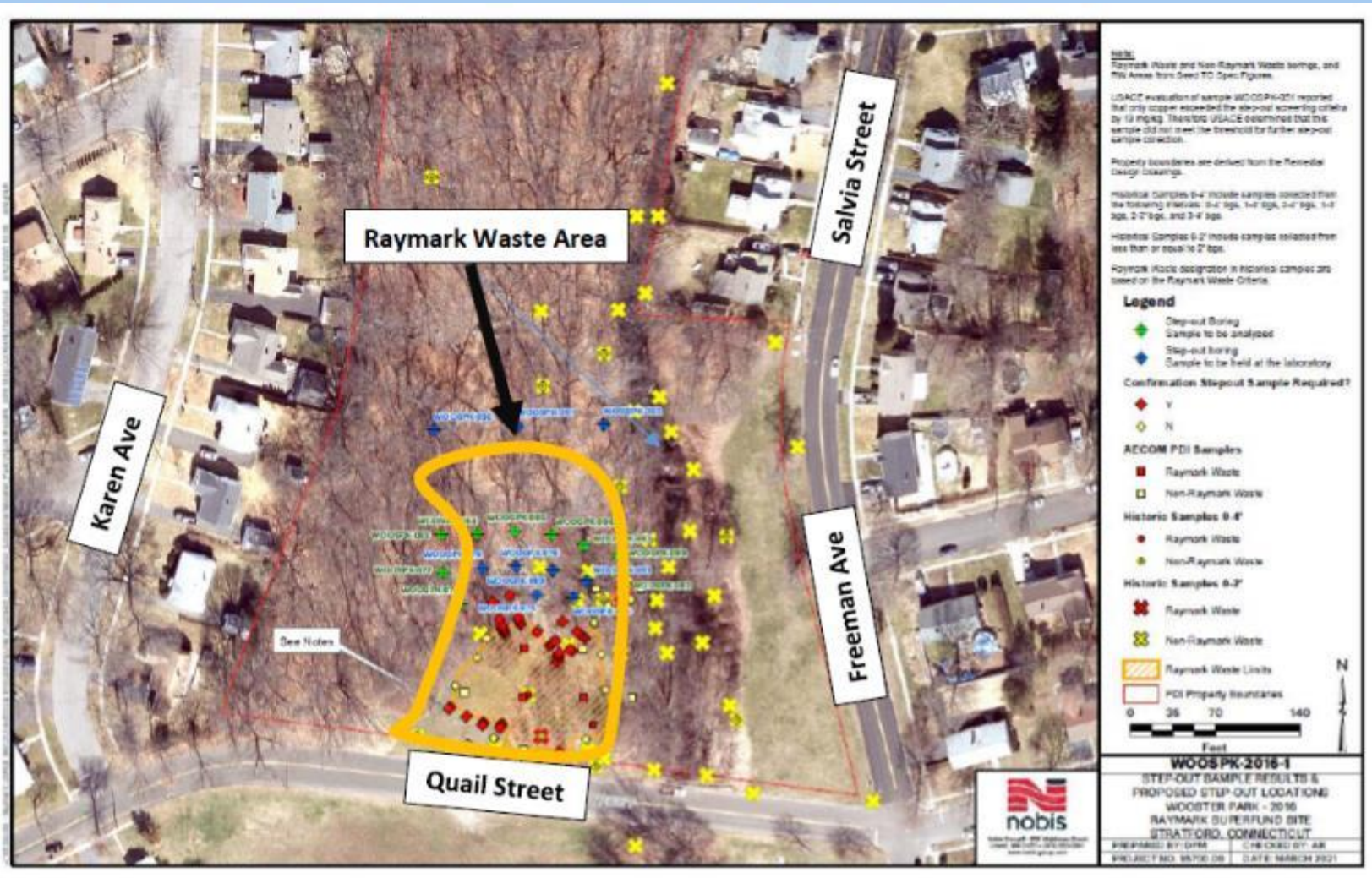
Backfill and air monitoring station at DOT ROW



Restoring 171 Ferry Blvd (Snaxx Plus)



Quail Street/Wooster Park



- Design Estimate = 1,500yds
- Current estimate = about **6,000yds (~350 trucks)**
- About 500yds PHC (35)
- Tree clearing mid-Oct
- Start on Nov. 4, 2021
- About 12 weeks to complete
- First neighborhood public meeting held on May 12th
- Second meeting on Sept 22nd



Quail St Stone base

Quail St

Truck staged
for loading





- Stone base for temp road
- Orange demarcation fabric
- Air monitoring station

OU6 REMEDIATION TRACKING TABLE

OU6 Area	Location	Excavation Dates	Volume (cy)	Number of truck trips?	Number of Properties	Notes
Glyne Manufacturing	380 East Main	Sept 16 -17, 2020	51.70	4	1	Phase 1 ELUR needed
Karate Studio	190 Ferry Boulevard	Dec 2 - 10, 2020	87.31	10	1	Phase 1 ELUR needed Not in 2016 ROD
Liquor Store	200 Ferry Boulevard	Dec 2 - 10, 2020	481.83	64	1	Phase 1 ELUR needed
DOT ROW along 190/200 Ferry Blvd	190/200 Ferry Boulevard ROW	Dec 2 - 10, 2020	109.30	11	1	Phase 1 ELUR needed Not in 2016 ROD
DOT Exit 33	Barnum Ave	Jan 19 – 20, 2021	345.57	19	1	DOT via Haul Road Not in 2016 ROD
Ashcroft (front), Dry Cleaner and Hair Salon	250, 304 and 340 East Main Street	Feb 16 – April 19, 2021	2,785.3	251	3	Phase 1 ELUR needed
			794.60	60	3	To Emelle, AI
302/350 East Main Street	302/350 East Main Street	Sept 15 - 16, 2021	127	9	2	Phase 2 ELUR needed Not in 2016 ROD
DOT ROW	Ferry Blvd and East Broadway	Sept 20 to Oct 1, 2021	430	47	1	Phase 2
171 Ferry Blvd	Snaxx Plus Convenience Store	October 4 to 19, 2021	389	41	1	Phase 2 ELUR needed Not in 2016 ROD
Ashcroft Rear	250 East Main Street	June 9 to Nov 3, 2021	9,259	745	1	Phase 2 ELUR needed
			377	35	1	To FTS/bind lead
TOTALS TO DATE =			13,677.01	1,160	13	
			1,171.60	95	4	

PHC volumes in RED font

Beacon Point



- 3 RW areas
- 3,250yds (210 trucks)
- Original est. 2,400yds
- 250 yds PHC waste (~20 trucks)
- Still chasing area 2
- App. Spring 2022
- About 8 weeks to complete

OU4 Updates

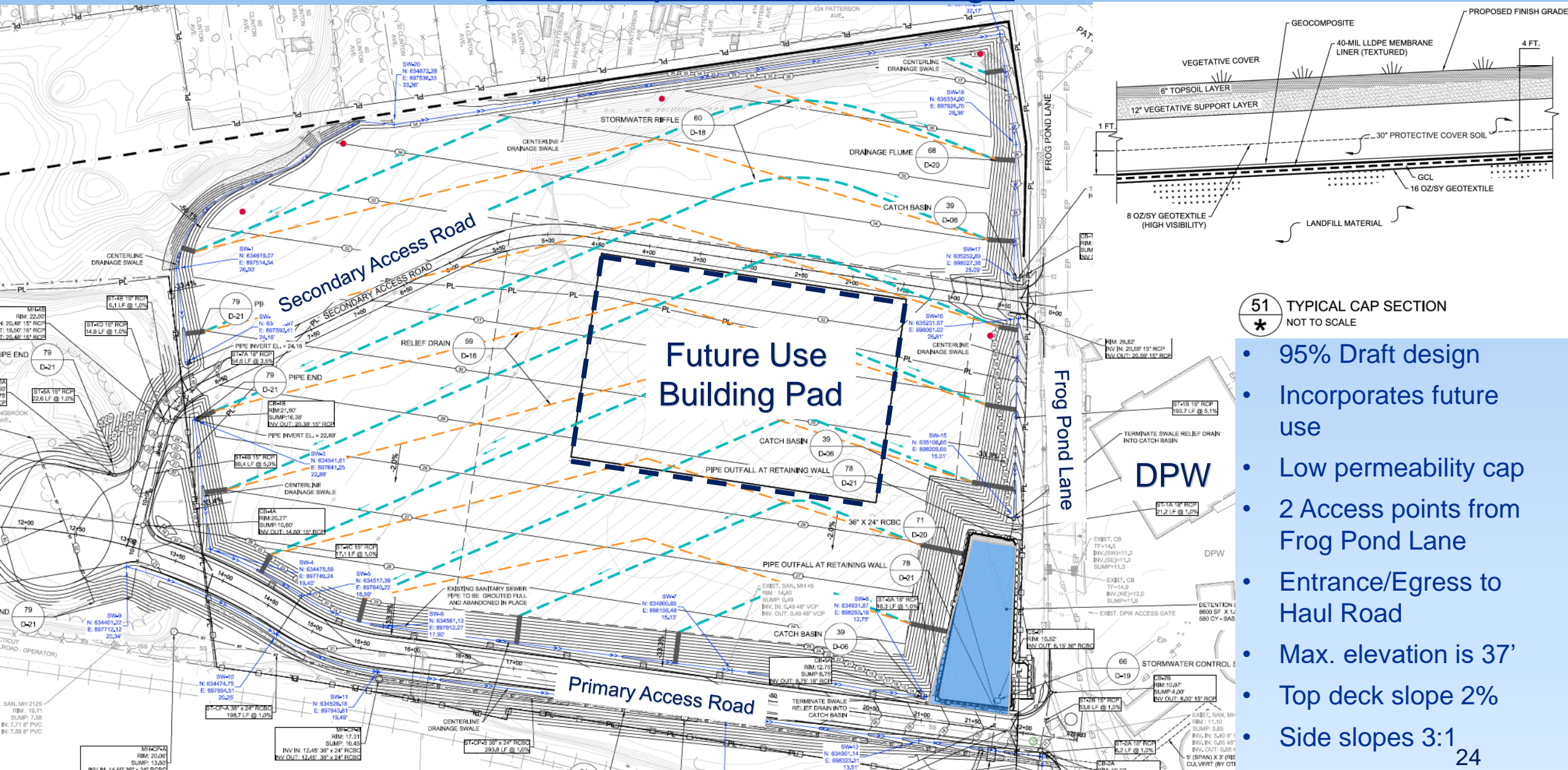
OU4 Ballfield Work Completed or Ongoing Since September



<https://www.ipcamlive.com/5fc7c13309700>

- Approximately 14,000 CY consolidated, compacted and covered
- Posi-Shell cover applied on all previously imported Raymark Waste at OU4 Ballfield
- Material is that is handled, and spread is adequately wetted
- Material handling tent structure is complete and in use
- OU4 site and cap 95% draft under review
- Stormwater control system design complete
- 5 perimeter air monitors at OU4 are operating daily

OU4 Cap and Site Design



51 TYPICAL CAP SECTION
* NOT TO SCALE

- 95% Draft design
- Incorporates future use
- Low permeability cap
- 2 Access points from Frog Pond Lane
- Entrance/Egress to Haul Road
- Max. elevation is 37'
- Top deck slope 2%
- Side slopes 3:1

OU4 Concept



- 3-D concept based on previous design
- Site design accommodates future use by the Town
- 200' x 300' building pad for future development. Will accommodate a variety of options.
- Access from Frog Pond Lane and Longbrook Ave via Haul Road
- Site stormwater will be collected and carried via new conveyance system and pumpstation

OU4 Stormwater System

Stormwater System Upgrades



New Pump Station

- 4 Axial Flow Pumps
- 200 CFS Capacity
- Operates during significant storm and high-water events
- Masonry Pumphouse



OU4 - Air Monitoring Results

- Since 9/29/21 public meeting Daily Average Dust = 0.003 to 0.009 mg/m³
- No exceedances of the OU4 Dust Action Level criteria (0.014 mg/m³)
- All five dust meters and sample collection systems in operation
- One personnel chemical sample collection system
- No exceedances of chemical health and safety criteria in fixed monitoring stations or on personnel
- Posting Weekly Air Monitoring, Chemical Data and Vibration Monitoring Reports on Town Raymark website



OU6 - Air Monitoring Results

- Soil excavation and Restoration at 250 East Main Street Rear, Ferry Blvd (East Broadway-Ferry Blvd intersection) and Wooster Park
- Daily Average Dust Measurements 0.000 to 0.006 mg/m³
- No exceedances of the OU6 Dust Action Level criteria (0.019 mg/m³)
- Two dust meters and sample collection systems in operation
- One personnel chemical sample collection system
- No exceedances of chemical health and safety criteria
- Posting Weekly Air Monitoring Reports, Chemical Data, and Vibration Monitoring Reports on Town Website

Perimeter Air Monitoring Updates - OU4/ OU6 Restoration

- All imported clean soil tested every 500-1000 cy to verify meets CT Residential Soil Criteria
- Only during site restoration Dust Action Level 0.150 mg/m³



Excavation and Consolidation Schedule Update

- Dec 2019 to June 2020 – Constructed Barriers ✓
- March to September 2020 – Constructed Haul Road ✓
- July to Sept 2020 – Prepared Ballfield to Receive Raymark Waste ✓
- Sept 2020 to Nov 2021 - Excavated RW from 13 OU6 areas ✓
 - 250 front, 250 rear, 302, 304, 340, 350 and 380 East Main Street
 - 171,190, 200 Ferry Boulevard
 - DOT ROW in front of 200 Ferry Boulevard
 - DOT ROW at intersection of East Broadway and Ferry Boulevard
 - DOT Exit 33 along Barnum Avenue

-
- Nov 2021 to Feb 2022 (estimated) – Quail Street/Wooster Park
 - Feb to May 2022 (estimated) – Vacant Lots Behind the Blue Goose
 - May to Dec 2022 (estimated) – Beacon Pt, 3rd Ave, DOT Lot, Lockwood Ave
 - 2022 to 2024 (estimated) – Construct Stormwater Pipes and Pump Station
 - 2023 – 230, 250, 280 Ferry Blvd, and OU3 Ferry Creek
 - 2024 – 300 Ferry Blvd and Construct Cap at OU4



Questions?

- Be respectful of time so everyone has a chance to speak
- We will monitor the chat box for questions
- Please speak one at a time.



Thank you for joining!

- Visit townofstratford.com/Raymark for updates, meeting dates, meeting recordings and slides
- Email Alivia at: acoleman@townofstratford.com with further questions, feedback or to sign up for email distribution list.
- Next meeting will be January 26, 2022 at 6:30 p.m.