

# Raymark Community Advisory Group Meeting

February 24, 2021



# Virtual Meeting Guidelines

- o Everyone will be muted through the presentations - please stay muted to eliminate background noise.
- o Hold questions until the end of each presentation.
  - o Use the chat box.
  - o Ask questions related to the presentation topic
  - o Please be respectful of time, so everyone has a chance to speak
  - o Mute yourself after speaking
- o Be respectful and patient!
- o Talk one at a time.
- o **This meeting will be recorded.**

# Agenda

- I. CALL TO ORDER – Alivia Coleman, Stratford Health
- II. INTRODUCTIONS – Alivia Coleman, Stratford Health
  - a. OVERVIEW OF VIRTUAL MEETING STRUCTURE
  - b. RULES OF CONDUCT
  - c. PERIODIC UPDATES
- III. STATUS:
  - a. PROJECT OVERVIEW AND GOALS FOR 2021- Jim DiLorenzo, EPA
  - o
  - a. RAYBESTOS MEMORIAL FIELD (OU4) UPDATE – Mike Looney & Dave Heislein, USACE
  - o
  - a. OU6 PROPERTIES UPDATE – Jim DiLorenzo, EPA
- I. QUESTIONS (Questions will also be held after each presentation section)
- II. ADJOURNMENT

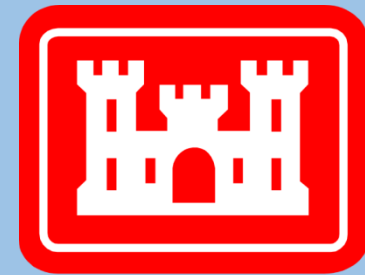


## Community Advisory Group

# Raymark Industries, Inc. Superfund Site Stratford, CT

Jim DiLorenzo, EPA  
Mike Looney, USACE  
Dave Heislein, USACE

February 24, 2021



**US Army Corps  
of Engineers®**

# Fiscal Year 2021 Overview

# 2021 Milestones

- Replace dead trees along the barriers
- Establish local office at the former Ski shop
- Install Sprung structure at ballfield
- Begin construction of the stormwater line
- Complete the design of the cap and pump station
- Conduct additional sampling at several properties
- Remove Raymark Waste from six to eight OU6 properties.

# Raybestos Memorial Ballfield (OU4) Update

## OU4 Ballfield Work Completed or Ongoing Since January



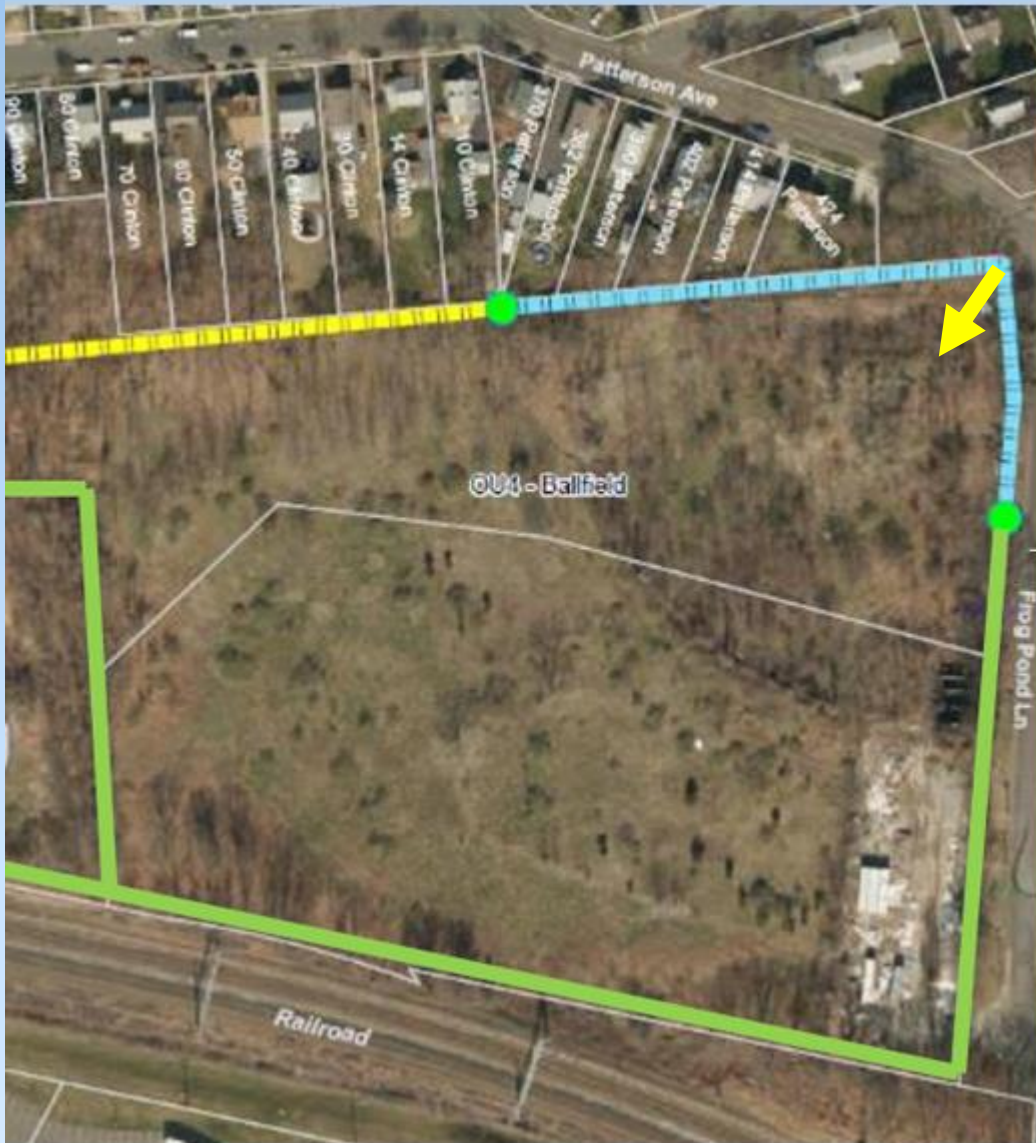
- Waste material from 250, 304 and 340 East Main Street currently being excavated and transported to ballfield
- Posi-Shell cover applied on all previously imported Raymark Waste at OU4 Ballfield
- OU4 site and cap design ongoing
- Stormwater control and conveyance design ongoing
- OU4 Monitoring well abandonment
- 5 perimeter air monitors at OU4 and 2 at East Main Street are operating daily



# OU4 Livestream Camera



<https://www.ipcamlive.com/5fc7c13309700>



# OU4 Design Concept



# Questions?



- o Please ask questions relevant to the prior presentation.
- o Be respectful of time so everyone has a chance to speak
- o We will monitor the chat box for questions
- o Please be respectful and speak one at a time.

# Air Monitoring

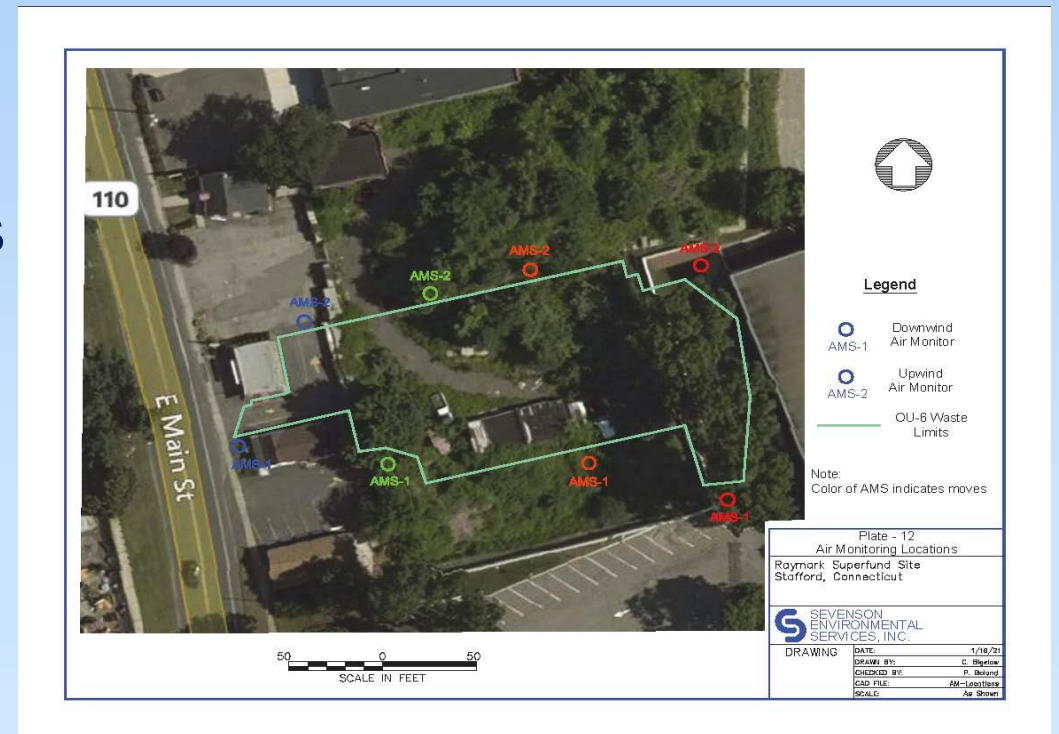
## OU4 - Air Monitoring Results

- Since 1/27/21 public meeting Daily Average Dust = 0.002 to 0.012 mg/m<sup>3</sup>
- No exceedances of Daily Average Dust Action Level 0.014 mg/m<sup>3</sup> criteria
- All five meters now operate 24-hrs/7 days-wk with heaters to control moisture content; data reported for hours of operation Mon-Fri.
- No exceedances chemical health and safety criteria
- Submitting weekly Air Monitoring Reports and
- Vibration Monitoring Reports
- Reports posted on Town Health Dept Raymark website



# OU6 - Air Monitoring Results

- Site preparation and Soil excavation at 250 and 304/340 East Main Street Properties
- Daily Average Dust Measurements 0.001 to 0.006 mg/m<sup>3</sup>
- No exceedances of Daily Average Dust Action Level 0.019 mg/m<sup>3</sup> criteria
- No exceedances of chemical health and safety criteria
- Submitting weekly Air Monitoring Reports and Vibration Monitoring Reports
- Reports posted on Town Health Dept Raymark website



# Questions?



- o Please ask questions relevant to the prior presentation.
- o Be respectful of time so everyone has a chance to speak
- o We will monitor the chat box for questions
- o Please be respectful and speak one at a time.

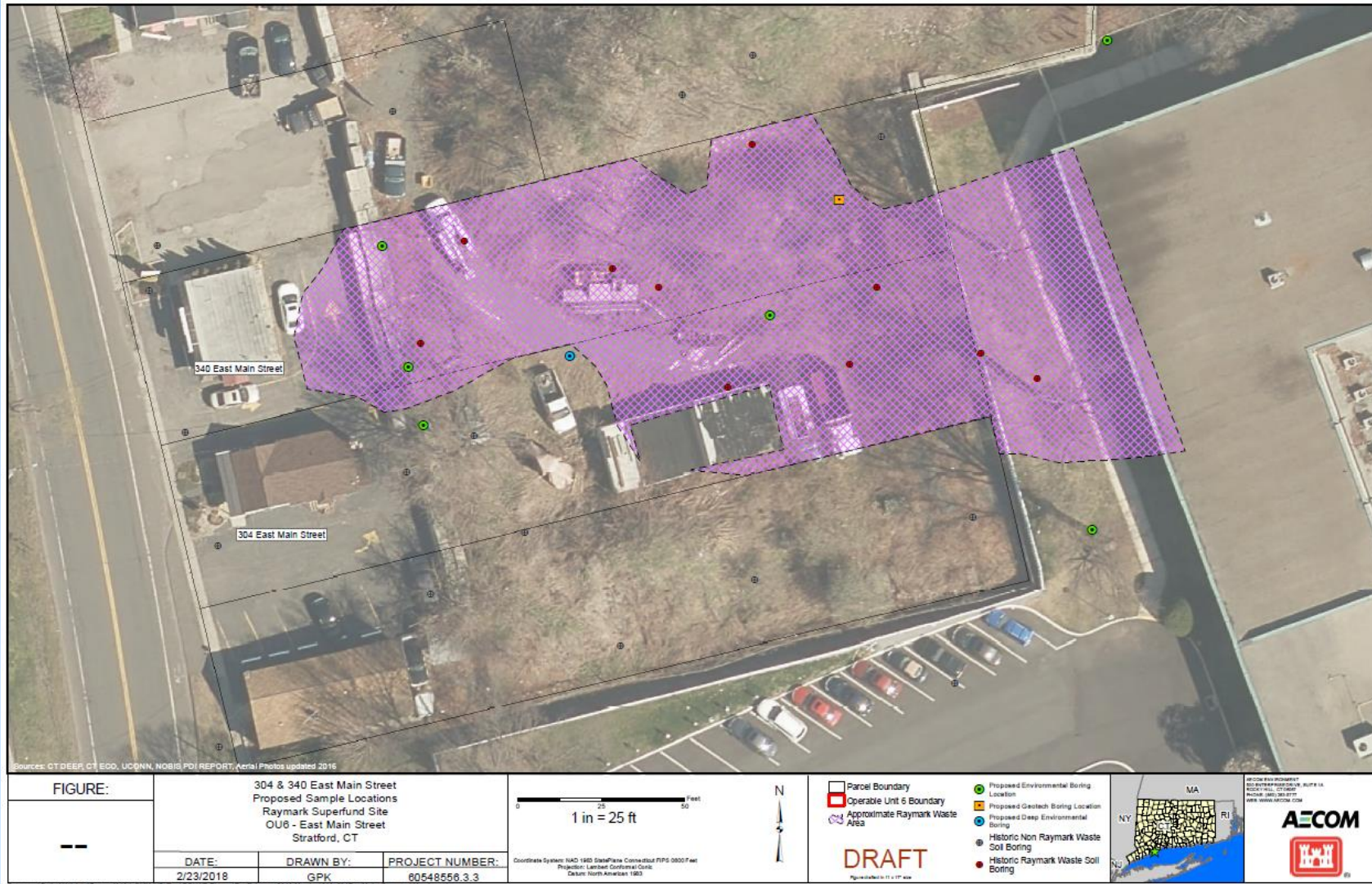
# OU6 Update



# OU6 Tracking Table

OU6 Parcel	Location	Dates	Est. Volume (cy)	Final Vol (cy)	# of truck trips?	Notes
Glyn Manufacturing	380 East Main	Sept 16 - 17, 2020	40	<b>42.30</b>	<b>4</b>	ELUR needed
Karate Studio	190 Ferry Boulevard	Nov 1 – 15, 2020	100	<b>104.57</b>	<b>10</b>	ELUR needed
Liquor Store	200 Ferry Boulevard	Nov 1 – 15, 2020	400	<b>497.91</b>	<b>64</b>	ELUR needed
<b>TOTALS TO DATE =</b>				<b>644.78</b>	<b>78</b>	
DOT Exit 33	Barnum Ave	January 19 <sup>th</sup> to ??	420	345.57 to date	19 to date	DOT Via Haul Road
Ashcroft (front), Dry Cleaner and Hair Salon	250, 304 and 340 East Main Street	Feb 2 <sup>nd</sup> through mid-April	5,000 (~750 PHC)	208.87 to date	21 to date	Via Frog Pond Lane

# 250, 304 and 340 East Main Street



- Began on Feb 2<sup>nd</sup>
- ~ 5,000 yds = 400 trucks (21 trucks to date)
- ~ 700 yds = 80 trucks PHC waste (0 trucks to date)
- Started at Ashcroft, back the way out
- Lots of shingles
- Existing soil piles to be used as backfill
- Finish mid-April?

# Excavation at 250 East Main (shingles and roof tar)

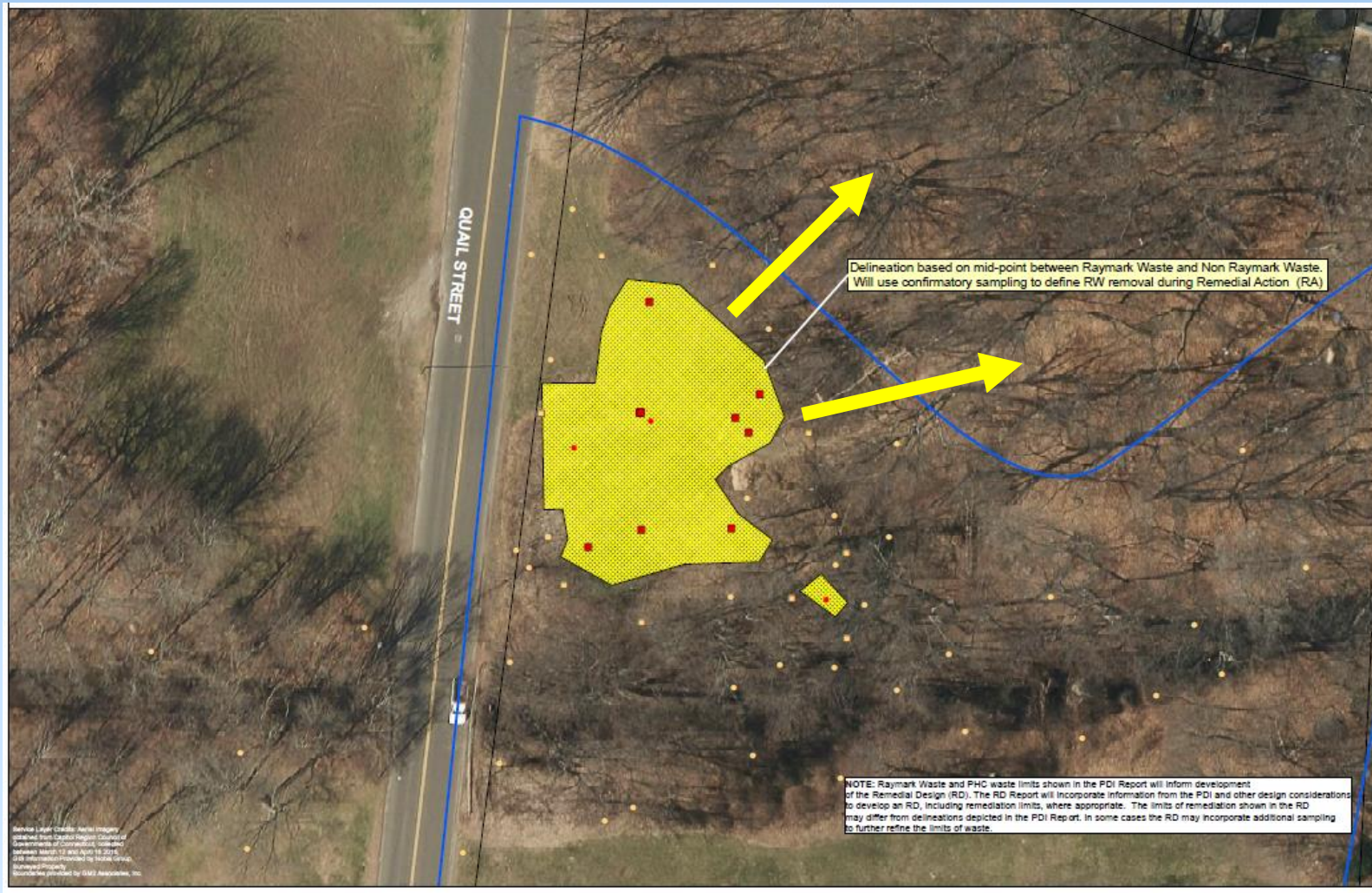


# Beacon Point



- ~ 2,400 yds = 200 trucks
- ~ 250 yds = 20 trucks PHC waste
- Trying to gain access to private property
- Begin in early May?
- About 10 weeks to complete

# Wooster Park



- ~ 3,000 yds = 250 trucks but still chasing the end
- Conduct this summer while school is out
- About 10 weeks to complete

# Vacant Lot Behind Blue Goose

- ~ 4,400 yds = 400 trucks
- ~ 660 yds = 60 trucks PHC waste
- Fall 2021
- About 12 weeks to complete



# Trucks





# ALL CONTAINERS MUST HAVE:



- 1.) Tight Cover
- 2.) Full Gasket



# Future Trucks



- 1.) Tight Cover
- 2.) Full Gasket



# Thank you for joining!!

- Visit [townofstratford.com/Raymark](https://townofstratford.com/Raymark) for updates, meeting dates, meeting recordings and slides
- **Next Meeting March 31, 2021**
- Email Alivia at: [acoleman@townofstratford.com](mailto:acoleman@townofstratford.com) with further questions or feedback.