

Raymark Community Advisory Group Meeting

March 31, 2021



Virtual Meeting Guidelines

- o Everyone will be muted through the presentations - please stay muted to eliminate background noise.
- o Hold questions until the end of each presentation.
 - o Use the chat box.
 - o Ask questions related to the presentation topic
 - o Please be respectful of time, so everyone has a chance to speak
 - o Mute yourself after speaking
- o Be respectful and patient!
- o Talk one at a time.
- o **This meeting will be recorded.**

Agenda

- o CALL TO ORDER – Alivia Coleman, Stratford Health
- o INTRODUCTIONS – Alivia Coleman, Stratford Health
 - o OVERVIEW OF VIRTUAL MEETING STRUCTURE
 - o RULES OF CONDUCT
 - o PERIODIC UPDATES
- o STATUS:
 - o ONGOING REMEDIATION AT EAST MAIN STREET- Jim DiLorenzo, EPA
 - o RAYBESTOS MEMORIAL FIELD (OU4) UPDATE – Mike Looney & Dave Heislein, USACE
 - o OU6 PROPERTIES SCHEDULE – Jim DiLorenzo, EPA
- o QUESTIONS (Questions will also be held after each presentation section)
- o ADJOURNMENT

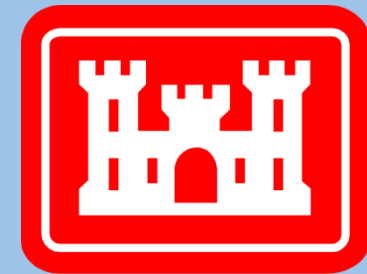


Community Advisory Group

Raymark Industries, Inc. Superfund Site Stratford, CT

Jim DiLorenzo, EPA
Mike Looney, USACE
Dave Heislein, USACE

March 31, 2021



**US Army Corps
of Engineers®**

AGENDA

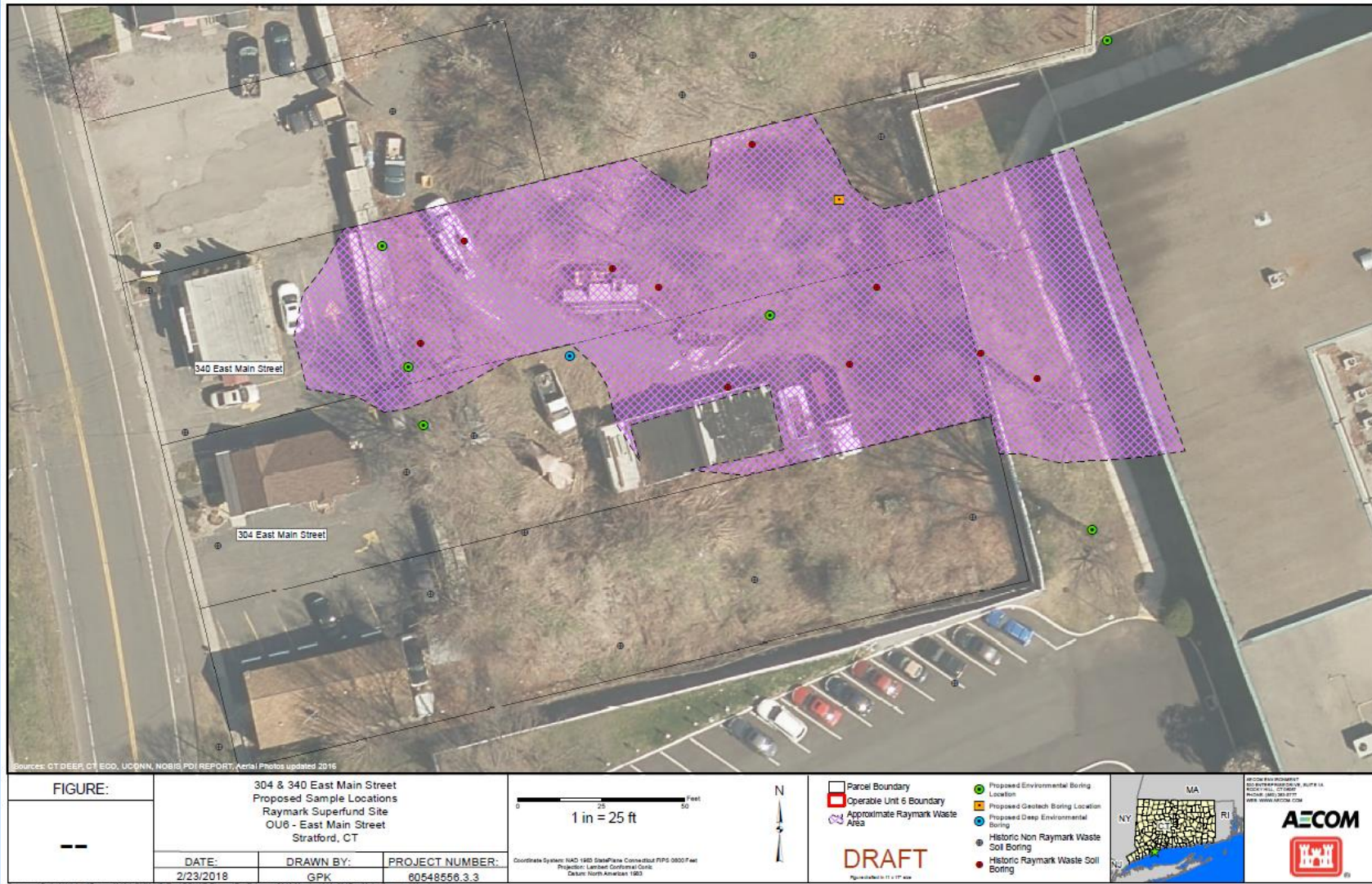
- INTRODUCTIONS AND MEETING RULES
- OPERABLE UNIT 6 SITES UPDATE
- OPERABLE UNIT 4 UPDATE
- AIR MONITORING

OU6 Update

OU6 Tracking Table

OU6 Parcel	Location	Dates	Est. Volume (cy)	Final Vol (cy)	# of truck trips?	Notes
Glyn Manufacturing	380 East Main	Sept 16 -17, 2020	40	42.3	4	ELUR needed
Karate Studio	190 Ferry Boulevard	Nov 1 – 15, 2020	100	104.57	10	ELUR needed
Liquor Store	200 Ferry Boulevard	Nov 1 – 15, 2020	500	497.91	64	ELUR needed
TOTALS TO DATE =				644.78	78	
DOT Exit 33	Barnum Ave	Jan 19 – ??, 2021	420	345.57 to date	19 to date	DOT via Haul Road
Ashcroft (front), Dry Cleaner and Hair Salon	250, 304 and 340 East Main Street	Feb 1 - ??, 2021	5,000	1,494 to date	131 to date	To OU4
			PHC -750	512 to date	31 to date	To Emelle, AI

250, 304 and 340 East Main Street



- Began on Feb 2nd
- ~ 5,000 yds = 400 trucks (131 trucks to date)
- ~ 700 yds = 80 trucks PHC waste (31 trucks to date)
- Started at Ashcroft, back the way out
- Lots of shingles
- Finish mid-April?

NOTES:
 1. FOR GENERAL NOTES AND TYPICAL LOGS SEE SHEET C-35.
 2. EXCAVATED MATERIAL SHALL BE TRANSPORTED TO OUR CONSTRUCTION AREA WITH THE EXCEPTION OF PFC MATERIAL.
 3. CONTRACTOR SHALL PREPARE MATERIALS ON STOCKPILE AND CHARACTERIZE PFC MATERIAL PRIOR TO OFF-SITE DISPOSAL. PFC MATERIAL WILL BE ASSUMED CHARACTERIZED HAZARDOUS WASTE FOR LEAD AND PCB'S ONLY.
 4. ESTIMATED EXCAVATION VOLUMES ARE OUR CONSTRUCTION BASE QUOTE VARIOUS AND OFF-SITE DISPOSAL PFC WASTE PFC QUOTE VARIOUS.
 5. VERTICAL LIMITS OF EXCAVATION MAY INCREASE DUE TO COMPLETION SAMPLING RESULTS. CONTRACTOR SHALL ADVISE IN ACCORDANCE WITH CONTRACTOR'S APPROVED COMPLETION SAMPLING PLAN.
 6. EXCAVATION INFORMATION PRESENTED IN DETAIL CALL OUTS ARE FOR INFORMATION AND ESTIMATE PURPOSES. ACTUAL EXCAVATION INFORMATION ON STRUCTURES WILL BE BASED UPON FEEDBACK FROM CONTRACTORS EMPLOYED STRUCTURAL ENGINEER.

- LEGEND
- AREA OF RAYMARK WASTE CLAS
 - AREA OF RAYMARK WASTE EXCEEDING PFC
 - PROPERTY LINE
 - TEMPORARY CONSTRUCTION FENCE
 - HOOD CONTROL
 - TEMPORARY JERSEY BARRIER

FOUR CORNER AT 30 EAST MAIN STREET



AECOM

PROJECT
 REMEDIAL DESIGN DRAWINGS
 RAYMARK SUPERFUND SITE
 Stafford, Connecticut

CLIENT

 US Army Corps of Engineers
 New England District

CONSULTANT
 AECOM
 800 Massachusetts Avenue
 Suite 1400
 Boston, MA 02118
 Telephone: 617 552 3000
 Fax: 617 552 3001
 www.aecom.com

REGISTRATION

100% DESIGN



ISSUE/REVISION

NO.	DATE	DESCRIPTION

PROJECT NUMBER
 6648666.A

SHEET TITLE
 REMEDIAL EXCAVATION PLAN -
 CLAS - PLATE 12
 283, 304, 340 EAST MAIN STREET

SHEET NUMBER
 C-35



Excavation at 250 East Main (shingles and roof tar)



Excavation of PHC Waste



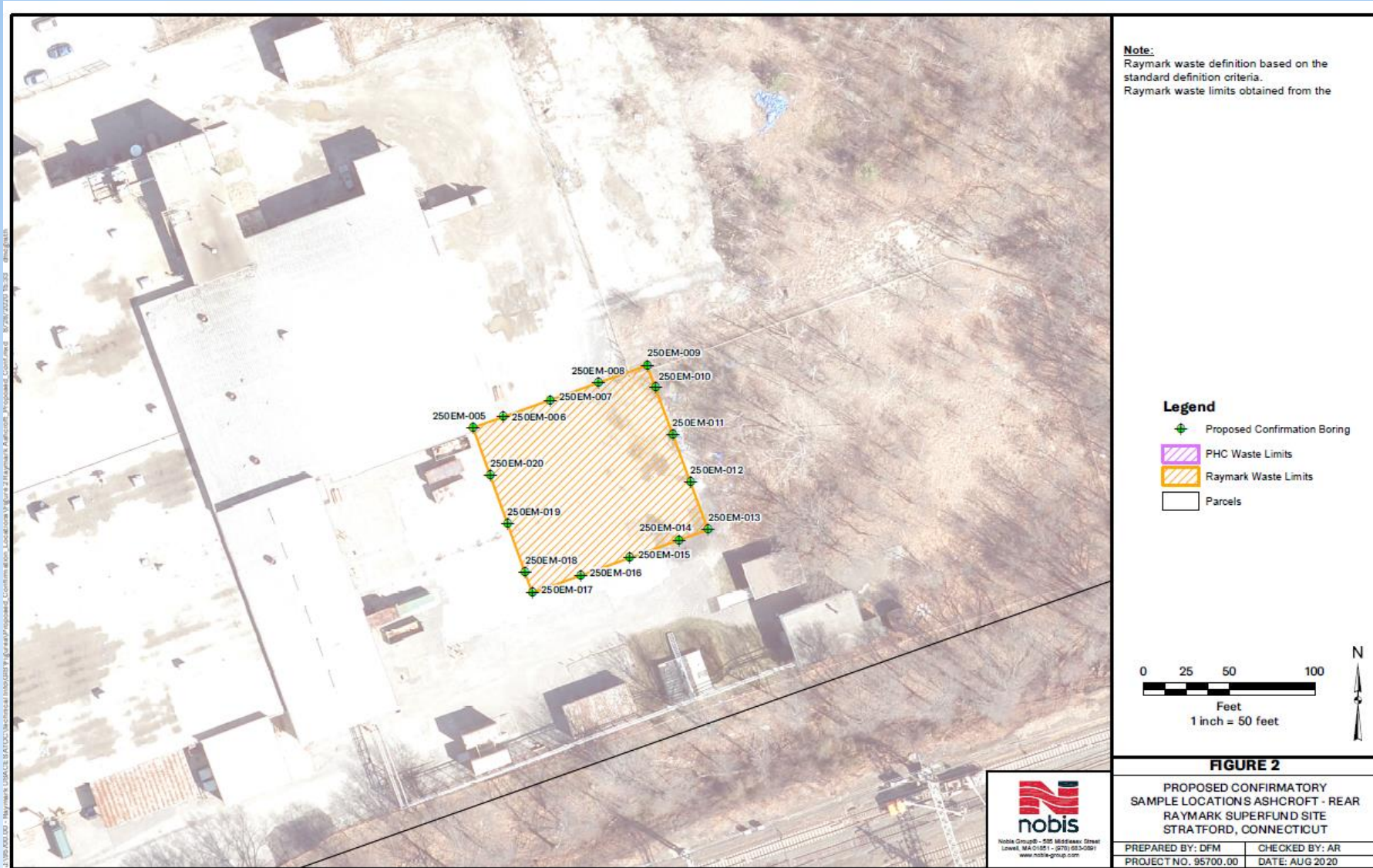


Excavation of PHC Waste

Raymark Waste Being Loaded at East Main Street



Ashcroft Rear (app.1,500yds or about 90 trucks)



DOT ROW along Ferry BLVD

app. 1,000yds
or
about 60
trucks

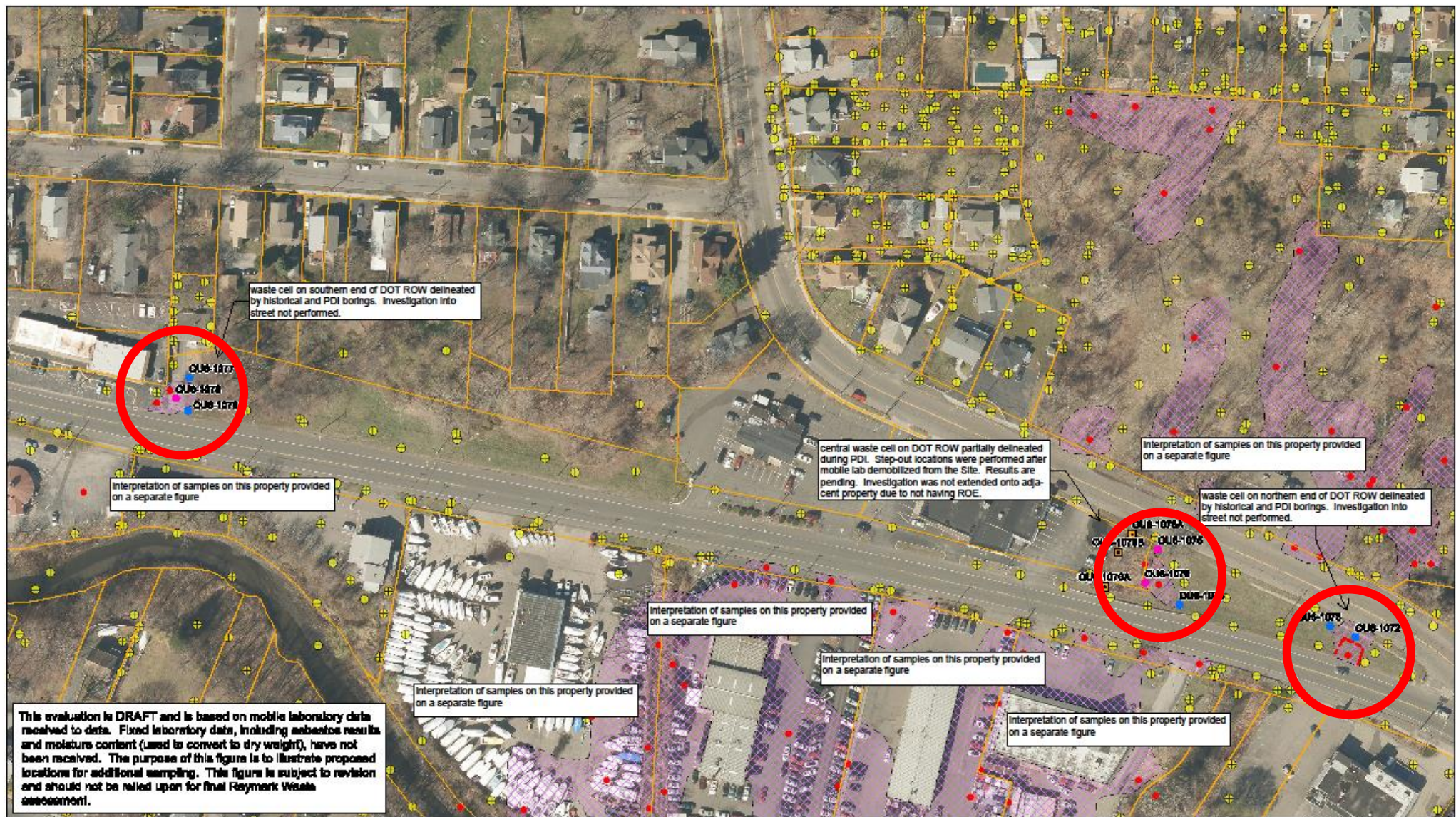
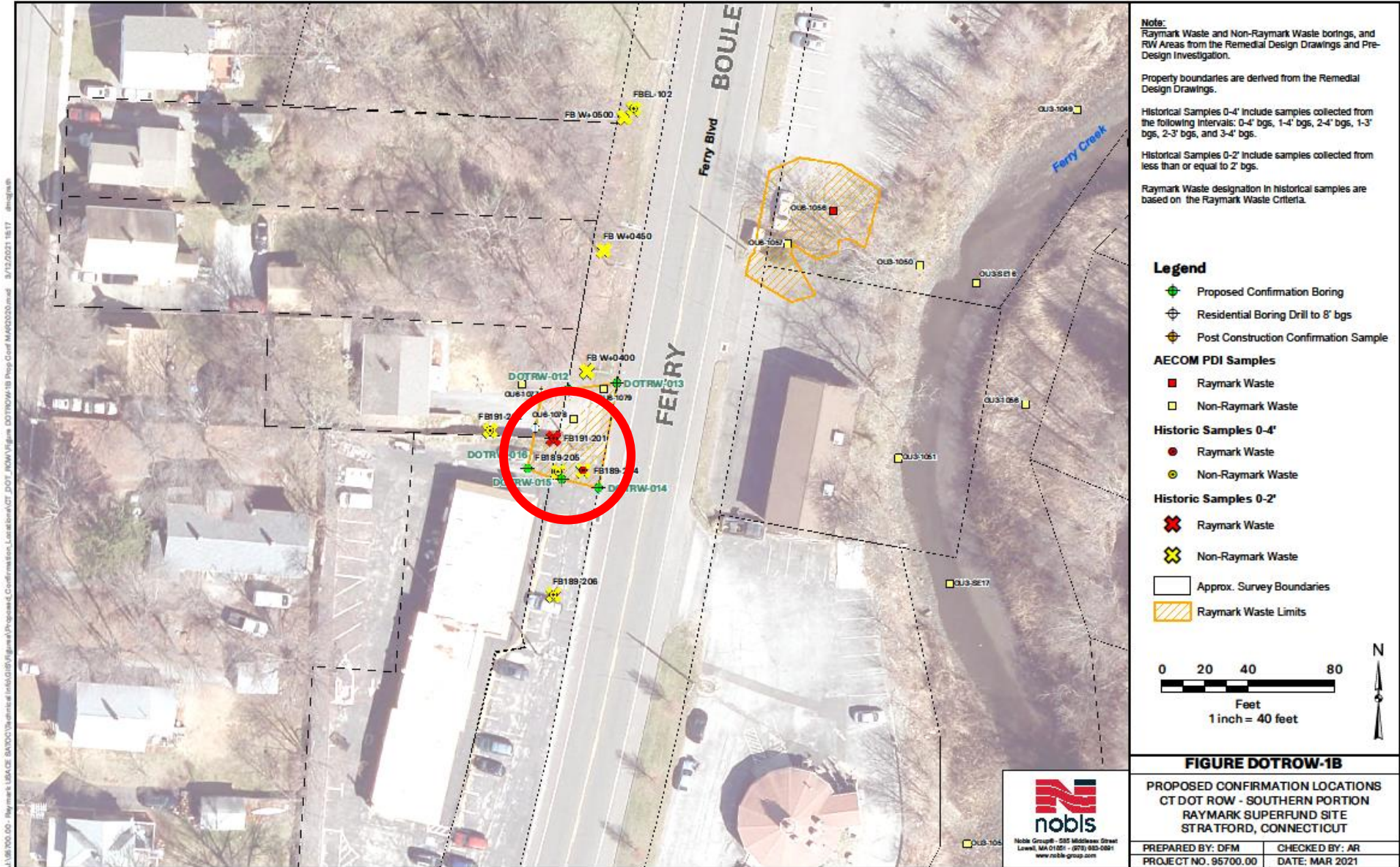


FIGURE:	DRAFT				<ul style="list-style-type: none"> Yellow square: Private Property Pink square: PDI Location Possibly Containing HW Based on Preliminary Data Blue square: PDI Location Not Containing HW Based on Preliminary Data Red square: Historic Storage Identifying Raymark Waste Green circle: Historic Storage Not Classified as Raymark Waste 		
Preliminary PDI Results Raymark Superfund Site Sturford, CT	DATE: 12/13/2017	DRAWN BY: GPK	PROJECT NUMBER: 60548086.6.4				

Small print at bottom: Document Path: X:\Projects\Superfund\60548086\Drawings\Map\DOT ROW.dwg



DOT
ROW
across
from
Karate
Studio

Vacant Lot Behind Blue Goose

- ~ 4,400 yds = 400 trucks
- ~ 660 yds = 60 trucks PHC waste
- Summer or Fall 2021?
- About 12 weeks to complete

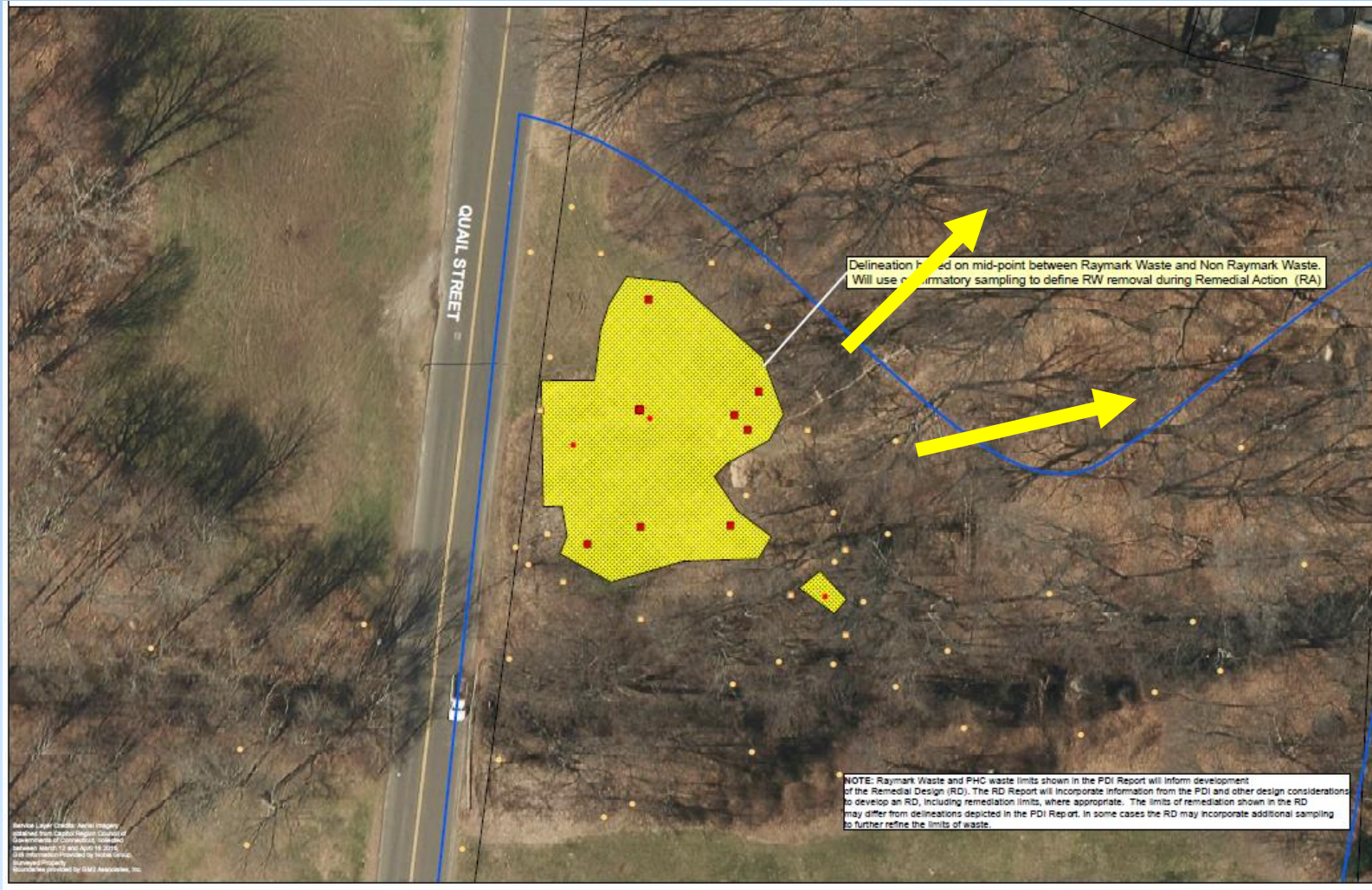


Beacon Point



- ~ 2,400 yds = 200 trucks
- ~ 250 yds = 20 trucks PHC waste
- Trying to gain access to private property
- Fall 2021
- About 10 weeks to complete

Wooster Park



- Estimate = 1,500yds
- Waste area much larger 5,000 yds but still chasing the end
- Change timing from Summer to Fall 2021
 - Closer to homes
 - Park active in summer
 - More than 10 weeks to complete
- Planning a neighborhood public meeting

Hauling Waste Trucks vs. Containers

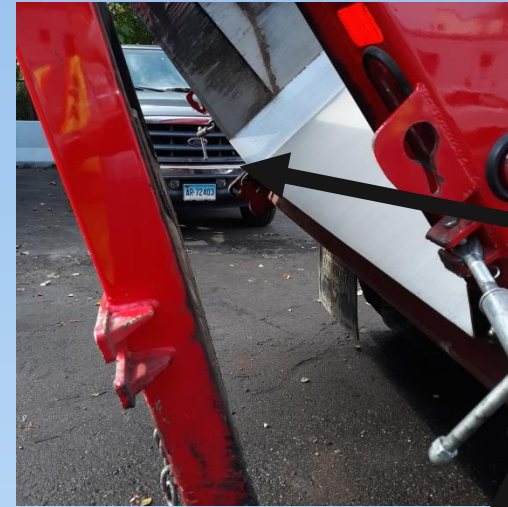


CONTAINERS



- 1.) Tight Cover
- 2.) Full Gasket

TRUCKS



- 1.) Tight Cover
- 2.) Full Gasket



Questions?



- o Please ask questions relevant to the prior presentation.
- o Be respectful of time so everyone has a chance to speak
- o We will monitor the chat box for questions
- o Please be respectful and speak one at a time.

Raybestos Memorial Ballfield (OU4) Update

OU4 Ballfield Work Completed or Ongoing Since February

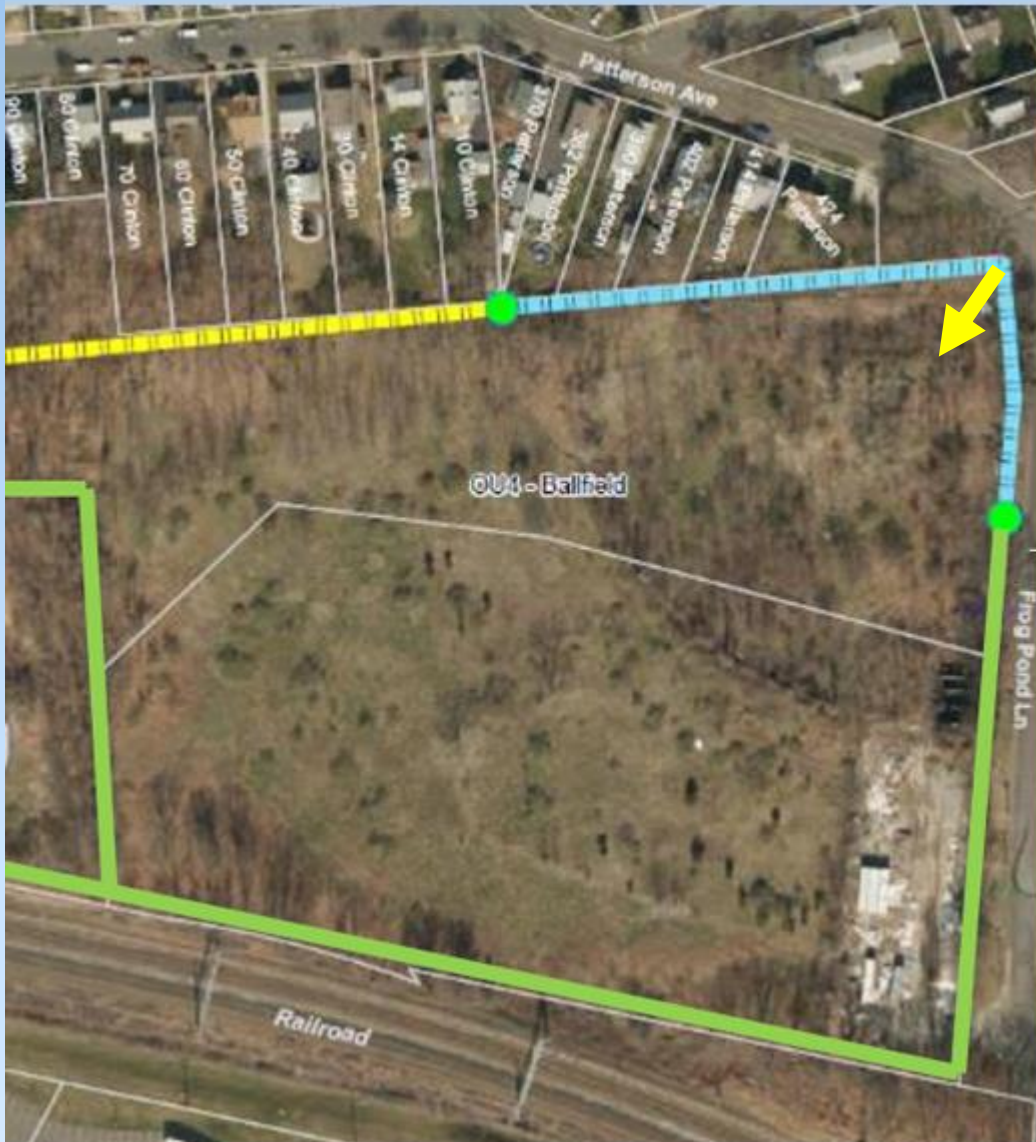


- Waste material from 250, 304 and 340 East Main Street currently being excavated and transported to ballfield
- Posi-Shell cover applied on all previously imported Raymark Waste at OU4 Ballfield
- OU4 site and cap design ongoing
- Stormwater control and conveyance system design complete
- 5 perimeter air monitors at OU4 and 2 at East Main Street are operating daily

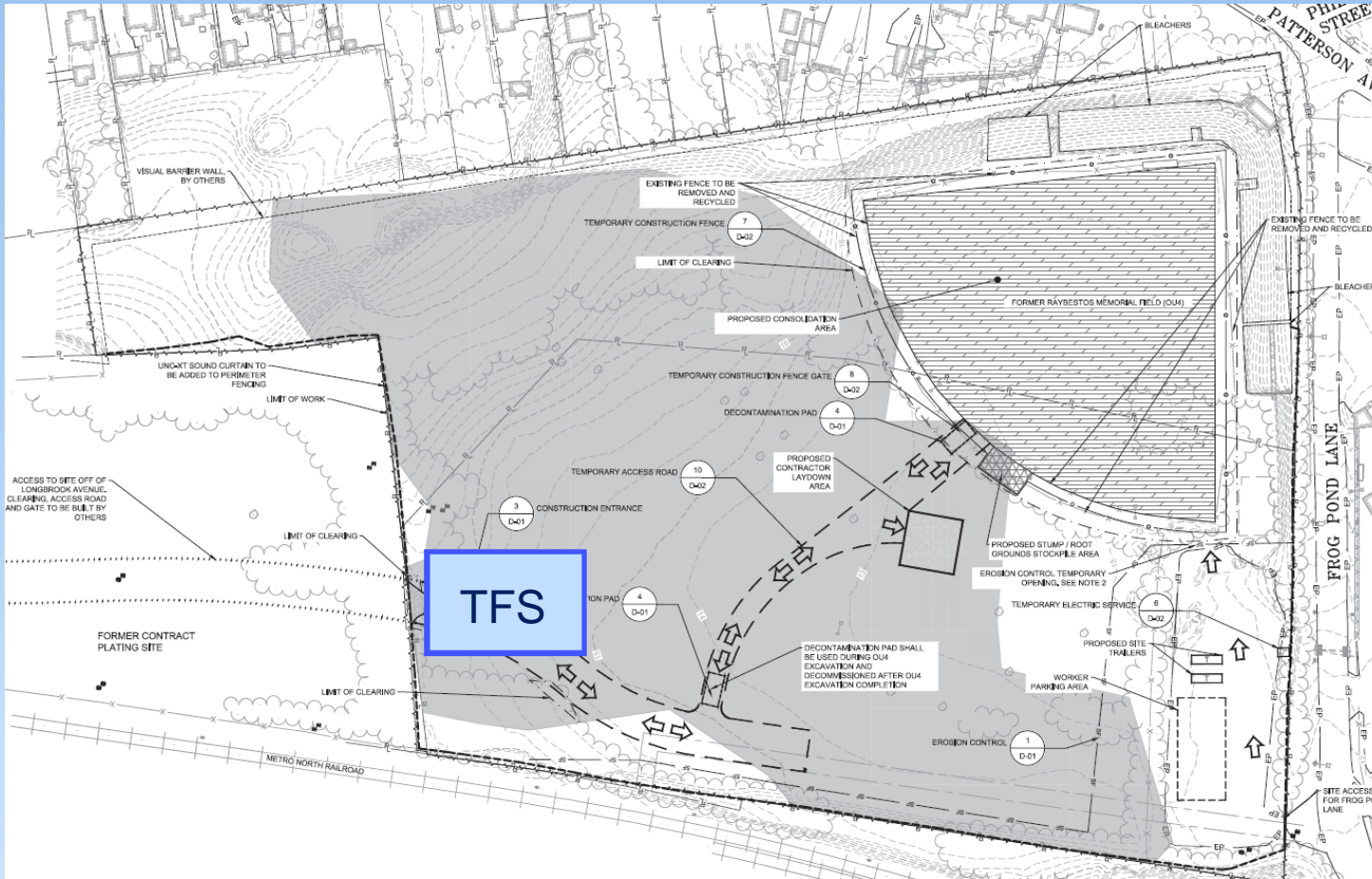
OU4 Livestream Camera



<https://www.ipcamlive.com/5fc7c13309700>



OU4 Containment Structure



- Temporary Fabric Structure (TFS)
- Approx. Dimensions (l x w x h) : 100' x 130' x 40'
- Used primarily for material additives and dewatering
- Closed system with air treatment
- Aluminum structural frame with PVC coated fabric membrane

Questions?



- o Please ask questions relevant to the prior presentation.
- o Be respectful of time so everyone has a chance to speak
- o We will monitor the chat box for questions
- o Please be respectful and speak one at a time.

Air Monitoring

Raymark Air Monitoring Program

- 5 Air Monitors/Chemical Sample Locations at OU4
- 2 Air Monitors/Chemical Sample Locations at OU6 Site
- Dust Action Level criteria derived to protect workers and community abutting the sites
 - Dust Action Levels incorporated chemicals on each OU
 - Dust Action Level criteria incorporated additional safety factors
- Chemical samples collected from all 7 stations and onsite personnel
 - Safety based individual chemical criteria monitored for worker safety and perimeter stations for community safety
- Submitting Weekly Air Monitoring Reports, Chemical Results and Vibration Monitoring Reports
- All reports posted on Town Health Dept Raymark website



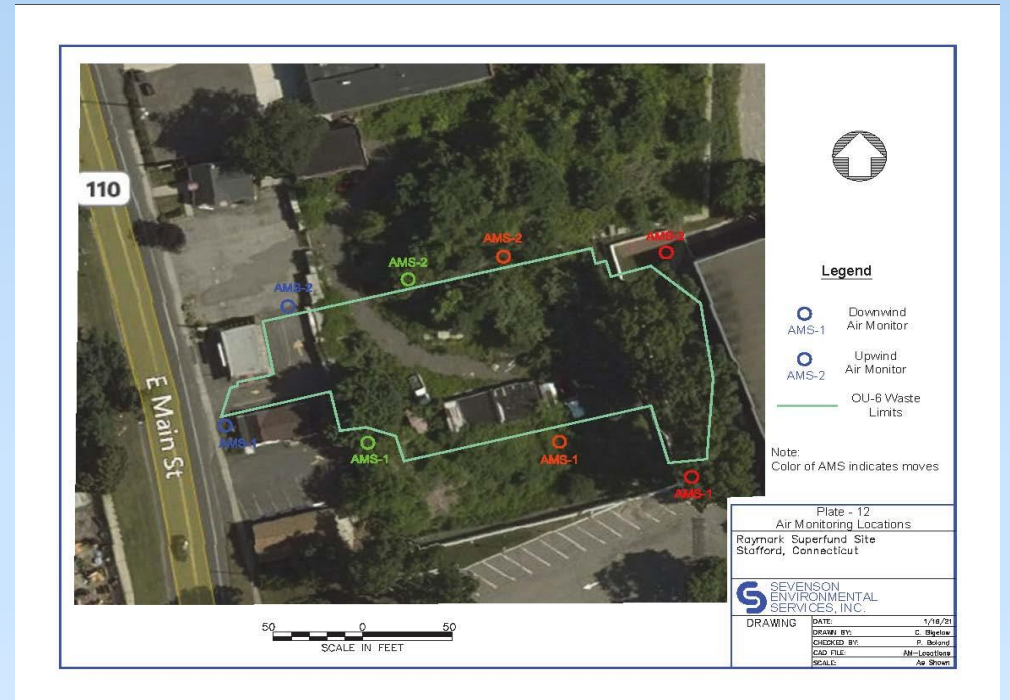
OU4 - Air Monitoring Results

- Since 2/24/21 public meeting Daily Average Dust = 0.002 to 0.013 mg/m³
- March 11th exceeded OU4 Dust Action Level criteria (0.016 mg/m³ vs 0.014 mg/m³)
- Associated with community wide dust (background conditions)
- Similar dust concentrations found at all 7 meters (OU4 and OU6)
- Reported the exceedance and posted on Town Raymark website
- Included chemical data from air monitoring confirming no risks posed to workers or community
- No exceedances of chemical health and safety criteria
- Posting Weekly Air Monitoring Reports
Chemical Data and Vibration Monitoring
Reports on Town Raymark website



OU6 - Air Monitoring Results

- Site preparation and soil excavation at 250 and 304/340 East Main Street Properties
- Daily Average Dust Measurements 0.001 to 0.006 mg/m³
- March 22nd exceedance during removal of clean groundwater from 250 East Main St to support soil excavation; water vapor impacted adjacent dust meter
- Reported the exceedance and posted on Town Raymark website
- Included chemical data from groundwater confirming no risks posed to workers or community
- No exceedances of chemical health and safety criteria
- Posting Weekly Air Monitoring Reports Chemical Data and Vibration Monitoring Reports on Town Raymark website



Thank you for joining!!

- Visit townofstratford.com/Raymark for updates, meeting dates, meeting recordings and slides
- **Next Meeting April 28, 2021**
- Email Alivia at: acoleman@townofstratford.com with further questions or feedback.