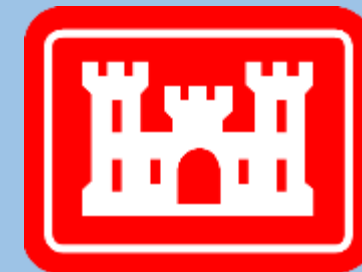


# Community Advisory Group

Raymark Industries,  
Inc. Superfund Site  
Stratford, CT

Jim DiLorenzo, EPA  
Mike Looney, USACE  
Rachel MacPhee, USACE

January 25, 2023



**US Army Corps  
of Engineers®**

To download presentation slides visit:

**[Stratfordct.gov/Raymark](http://Stratfordct.gov/Raymark)**

# Hybrid Meeting Guidelines

## Virtual Attendees:

- Everyone will be muted throughout the presentations - please stay muted to eliminate background noise.
- Hold questions until the end of the meeting.
  - Use the chat box.
  - -Mute yourself after speaking

## Everyone:

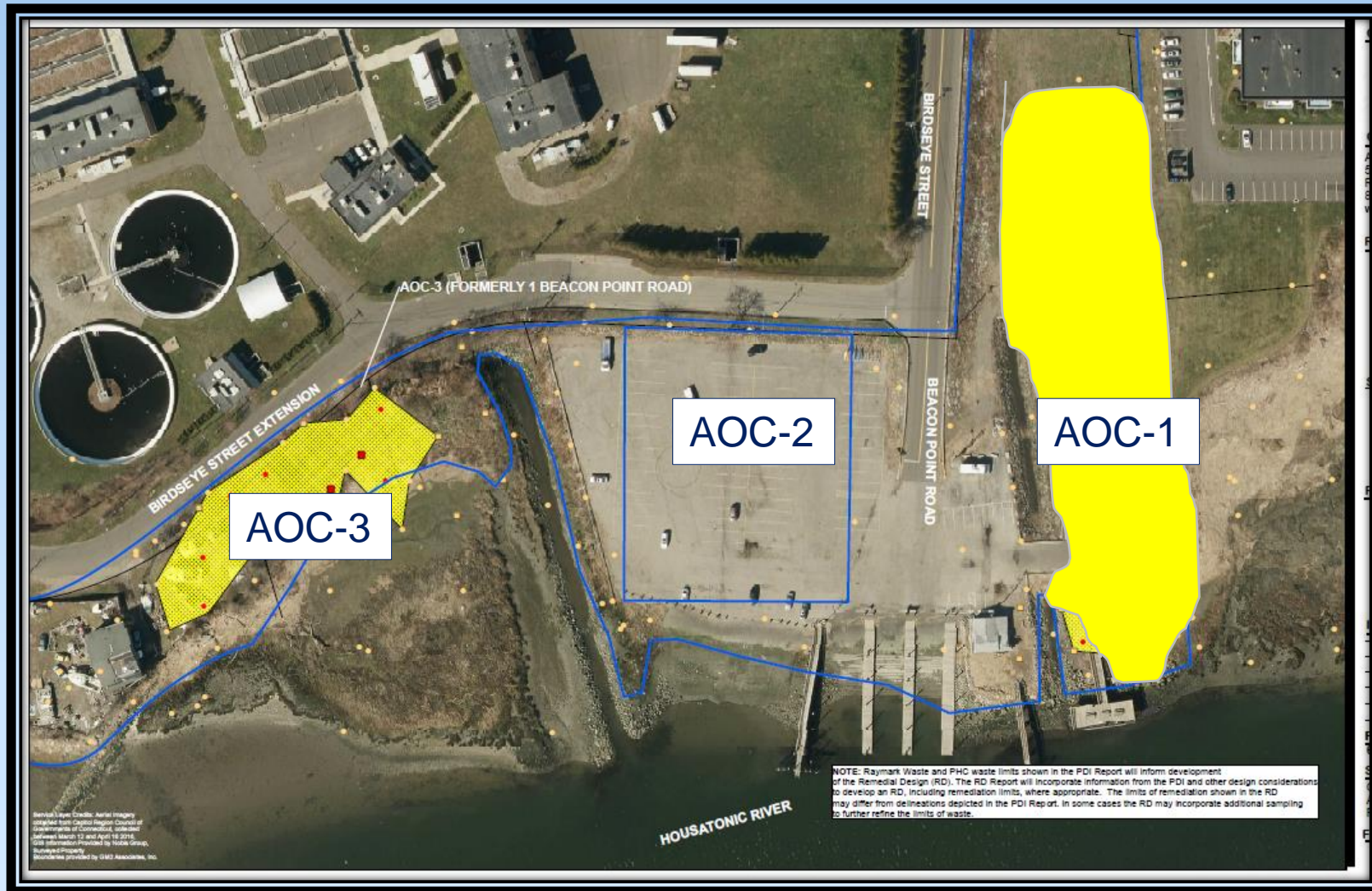
- Ask questions related to the presentation topic
- Please be respectful of time, so everyone has a chance to speak
- Be respectful and patient!
- Talk one at a time.
- **This meeting will be recorded.**

# AGENDA

- INTRODUCTIONS AND MEETING RULES
- OPERABLE UNIT 6 (OU6) UPDATES
- RAYBESTOS MEMORIAL FIELD (OU4)
- AIR MONITORING/TRAFFIC ROUTE UPDATES
- STORMWATER CONVEYANCE SYSTEM
- OVERALL PROJECT SCHEDULE

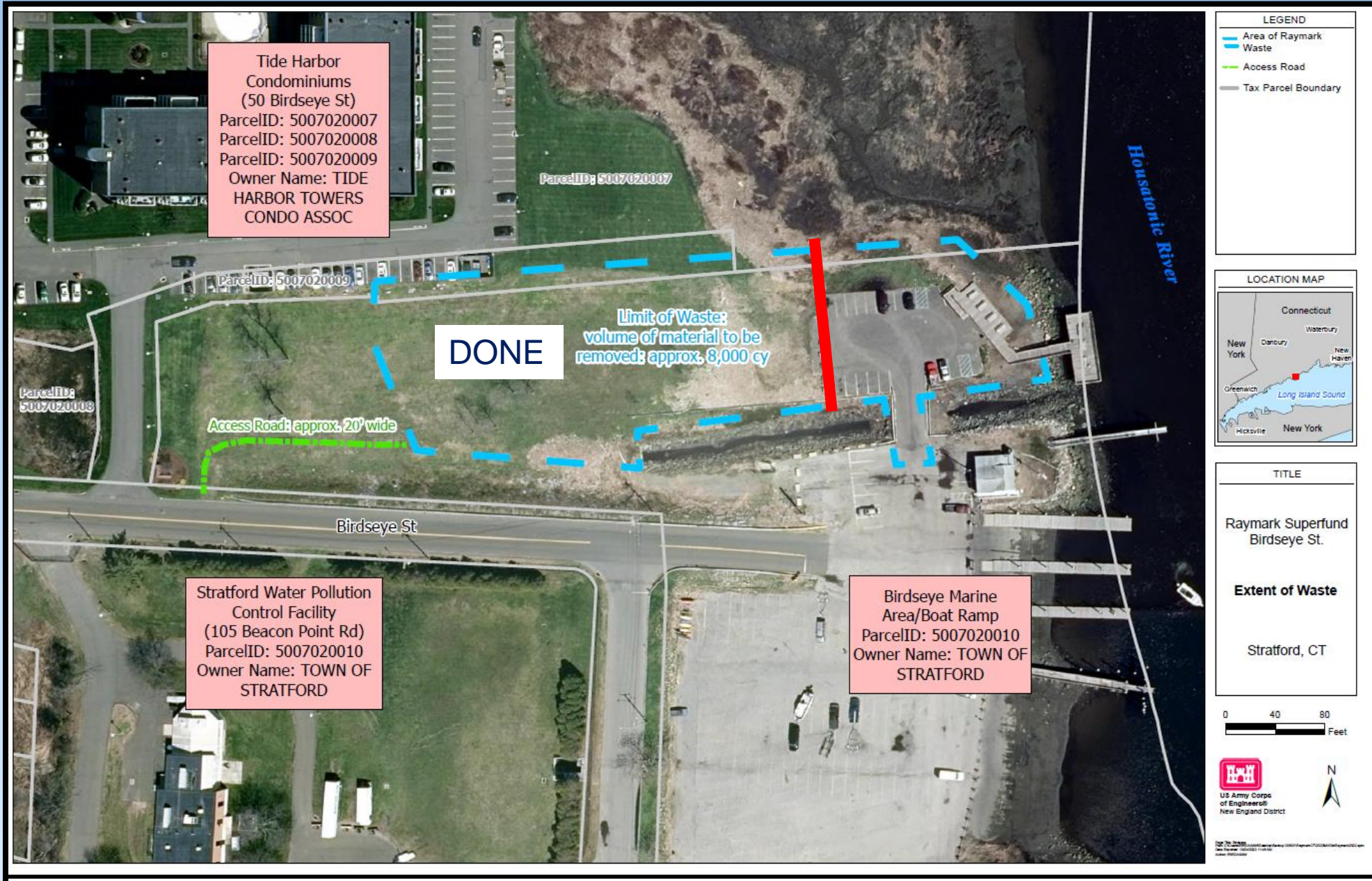
# OU6 Updates

# Beacon Point Area



- 3 Areas of Concern (AOCs)
  - AOC-2: Done per 2011 ROD/ELUR
  - AOC-3: Town and Private Boat Yard
  - AOC-1: Town and Condo
- RW: est 11,000 yds (700 trucks)
- PHC: est 250 yds (20 trucks)
- AOC-1: About 50% done
- AOC-3: About 25% done
- Coastal Resiliency
  - Raise parking lot by 1 foot
  - More wetland plants and install more boulders
- Done by Memorial Day

# Beacon Point AOC-1



- Began on Nov 27
- Recreational dock to be replaced
- Rip rap enhanced
- Parking lot to be reshaped to pull back from wetland
- Parking lot to be raised one foot re: coastal resiliency



40 Sheet Piles

Long Brook

US Coast  
Guard-Auxiliary  
Fishing Pier







AOC-1  
January 6<sup>th</sup>



AOC-1  
January 18<sup>th</sup>



AOC-3  
January 18<sup>th</sup>

OU6 Area	Location	Excavation Dates	Volume (cy)	Number of truck trips?	Number of Properties	Notes
Glyne Manufacturing	380 East Main	Sept 16 -17, 2020	51.70	4	1	Phase 1 ELUR needed
Karate Studio	190 Ferry Boulevard	Dec 2 - 10, 2020	87.31	10	1	Phase 1 ELUR needed Not in 2016 ROD
Liquor Store	200 Ferry Boulevard	Dec 2 - 10, 2020	481.83	64	1	Phase 1 ELUR needed
DOT ROW along 190/200 Ferry Blvd	190/200 Ferry Boulevard ROW	Dec 2 - 10, 2020	109.30	11	1	Phase 1 ELUR needed Not in 2016 ROD
DOT Exit 33	Barnum Ave	Jan 19 – 20, 2021	345.57	19	1	DOT via Haul Road Not in 2016 ROD
Ashcroft (front), Dry Cleaner and Hair Salon	250, 304 and 340 East Main Street	Feb 16 – April 19, 2021	2,785.3	251	3	Phase 1 ELUR needed
			794.60	60	3	To Emelle, AI
302/350 East Main Street	302/350 East Main Street	Sept 15 - 16, 2021	127	9	2	Phase 2 ELUR needed Not in 2016 ROD
DOT ROW	Ferry Blvd and East Broadway	Sept 20 to Oct 1, 2021	430	47	1	Phase 2
		Supp on March 31, 2022	48	6		
171 Ferry Blvd	Snaxx Plus Convenience Store	October 4 to 19, 2021	389	41	1	Phase 2 ELUR needed Not in 2016 ROD
Ashcroft Rear	250 East Main Street	June 9 to Nov 3, 2021	9,281	745	1	Phase 2 ELUR needed Not in 2016 ROD
			377	35	1	To FTS/bind lead
Wooster Park	Quail Street	Nov 9, 2021 to Jan 5, 2022	4,872	433	1	Phase 2 ELUR needed
			130	15	1	To FTS/bind lead
Vacant Lots	Behind 326 FB	Jan 18 to May 11, 2022	9,622	905	2	Phase 2 ELUR needed
			1,362	121	2	To FTS/bind lead
Hitchcock Marine	230 Ferry Blvd	June 13 to July 27, 2022	4,974	457	1	Phase 3 ELUR needed Septic to sewer replacement
			715	72	1	To FTS/bind lead
Wiz Auto	250 Ferry Blvd	Sept 21 to Nov 22, 2022	7,897	687	1	Phase 3 ELUR needed
			1,818	161	1	To FTS/bind lead
Beacon Point	Beacon Point	Nov 27, 2022 to xxx	6,337	524	2	AOC-1 and AOC-3
TOTALS TO DATE =		Raymark Waste	47,450	4,092	20	
		PHC Waste	5,197	464	9	

# OU6 Remediation Tracking Table

PHC volumes in RED font

# Remaining OU6 Properties

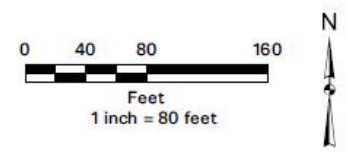
# Lockwood Ave (Summer 2023)



- Note:**
1. Raymark Waste and Non-Raymark Waste borings, and RW Areas from Seed TO Spec Figures.
  2. Raymark Waste and Non-Raymark Waste borings, and RW Areas from the Remedial Design Drawings and Pre-Design Investigation.
  3. Property boundaries are derived from the Remedial Design Drawings.
  4. Raymark Waste designation in historical samples are based on the Raymark Waste Criteria.

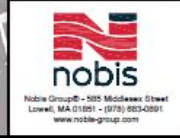
**Legend**

- Confirmation Boring Type**
- ◆ To be collected
- AECOM PDI Samples**
- Raymark Waste
  - Non-Raymark Fill
- Historic Samples 0-4'**
- Raymark Waste
  - Non-Raymark Fill
- PHC Waste Limits**
- ▨ PHC Waste Limits
  - ▨ Raymark Waste Limits

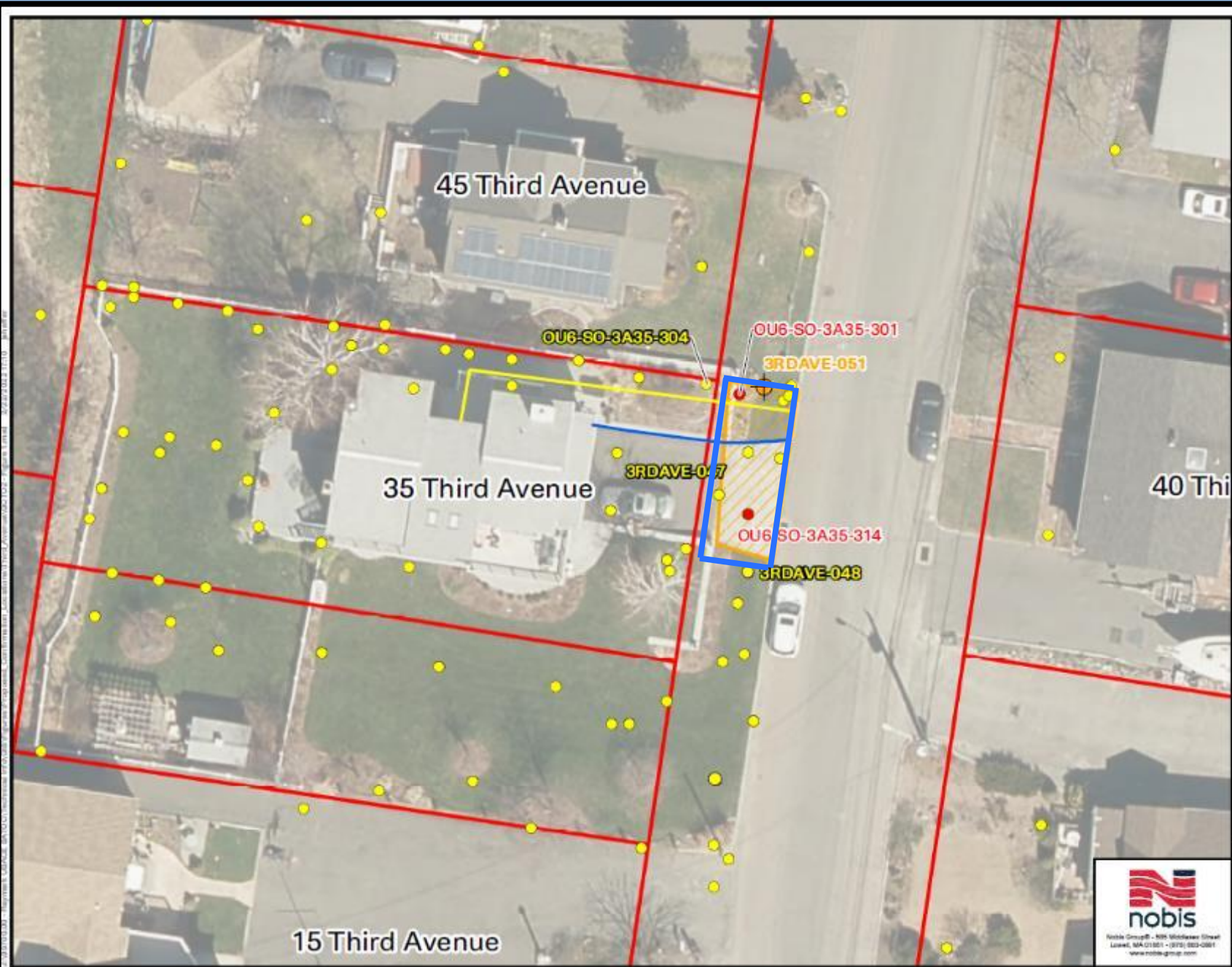


**FIGURE 1**

PROPOSED SAMPLE LOCATIONS  
 LOCKWOOD AVENUE  
 RAYMARK SUPERFUND SITE  
 STRATFORD, CONNECTICUT



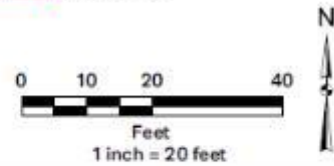
PREPARED BY: JTS	CHECKED BY: AR
PROJECT NO. 95700.00	DATE: NOVEMBER 2021



- Note:**
1. USACE evaluation of sample results determined that sample did not meet all thresholds for step-out criteria and further step-out sample collection is not required.
  2. USACE evaluation of sample results determined that sample met all thresholds for step-out criteria and further step-out sample collection is required.
  3. Raymark Waste and Non-Raymark Waste borings, and RW Areas from the Remedial Design Drawings and Pre-Design Investigation.
  4. Property boundaries are derived from the Remedial Design Drawings.
  5. According to FEMA's National Flood Hazard Layer, the property 35 Third Avenue and parcels to the north, east, and south are located in the AE EL-11 Floodplain. Parcels to the west are located in the VE EL-14 Floodplain.
  6. Historical Samples 0-4' include samples collected from the following intervals: 0-4' bgs, 1-4' bgs, 2-4' bgs, 1-3' bgs, 2-3' bgs, and 3-4' bgs.
  7. Raymark Waste designation in historical samples are based on exceeding the Raymark Waste Criteria.
  8. Locations of site features depicted hereon are approximate and given for illustrative purposes only.

**Legend**

- Proposed Confirmation Boring
  - Post Construction Confirmation Sample
- Raymark Waste detected? (0-4')
  - Yes
  - No
- Historical Samples 0-4'
  - Raymark Waste
  - Non-Raymark Waste
- Water Line
- Natural Gas Line
- Raymark Waste Limits
- Stratford Parcels



**FIGURE 1 - 35 THIRD AVE 0-4FT BGS**



GCTO2  
 35 THIRD AVENUE  
 RAYMARK SUPERFUND SITE  
 STRATFORD, CONNECTICUT

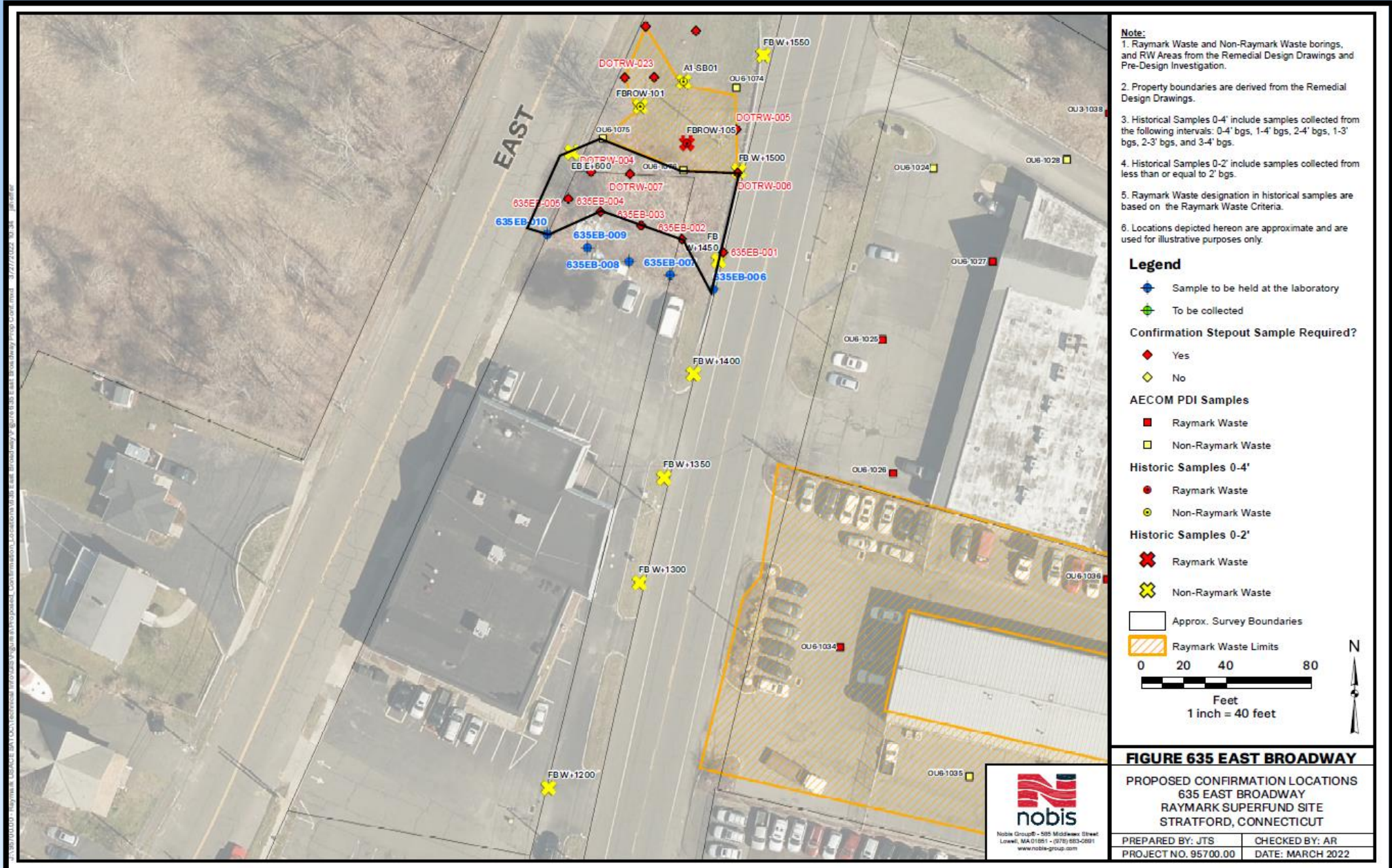
PREPARED BY: JTS	CHECKED BY: AR
PROJECT NO. 95700.00	DATE: FEBRUARY 2022

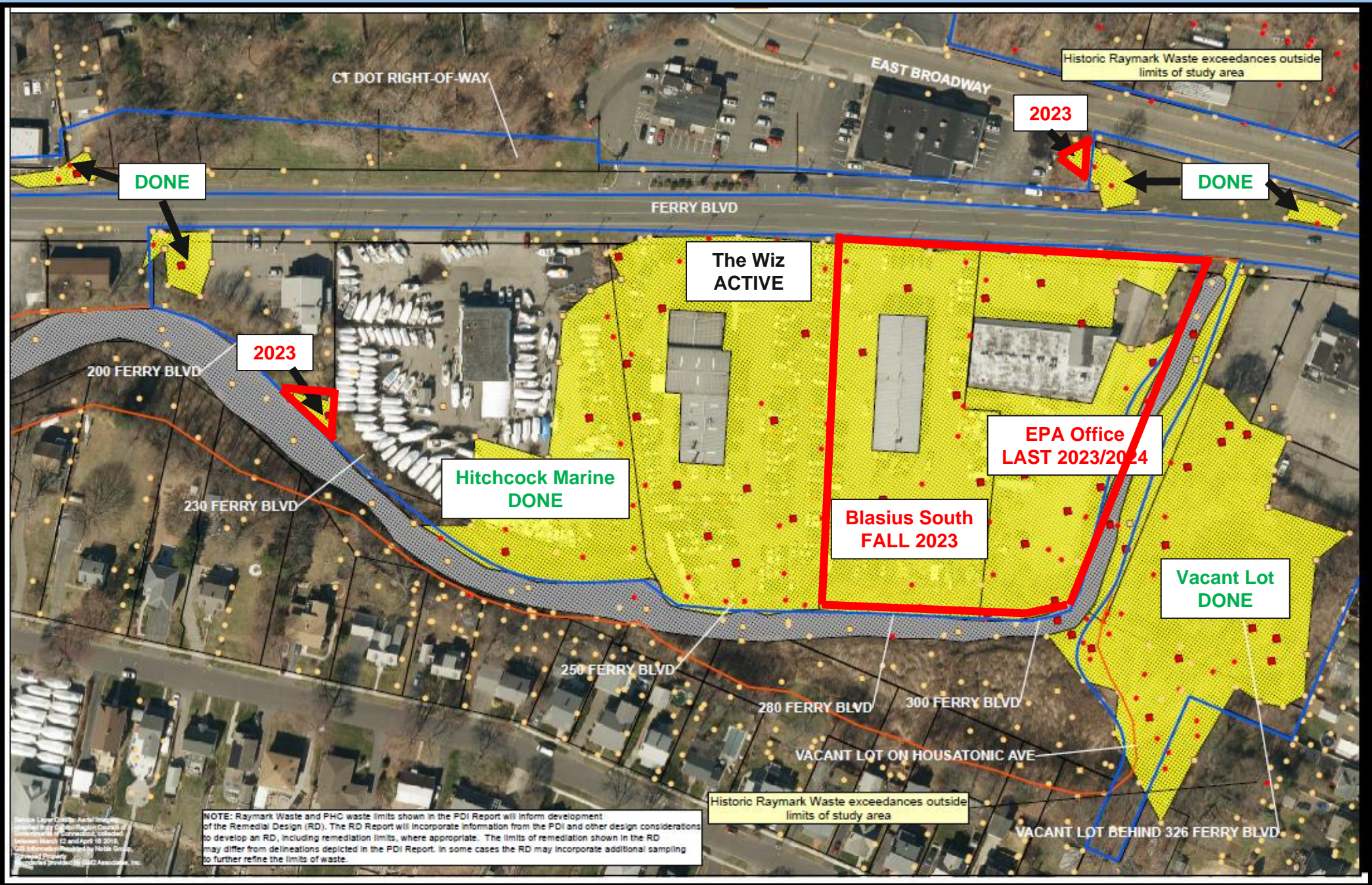
# Third Ave ROW

Spring 2023



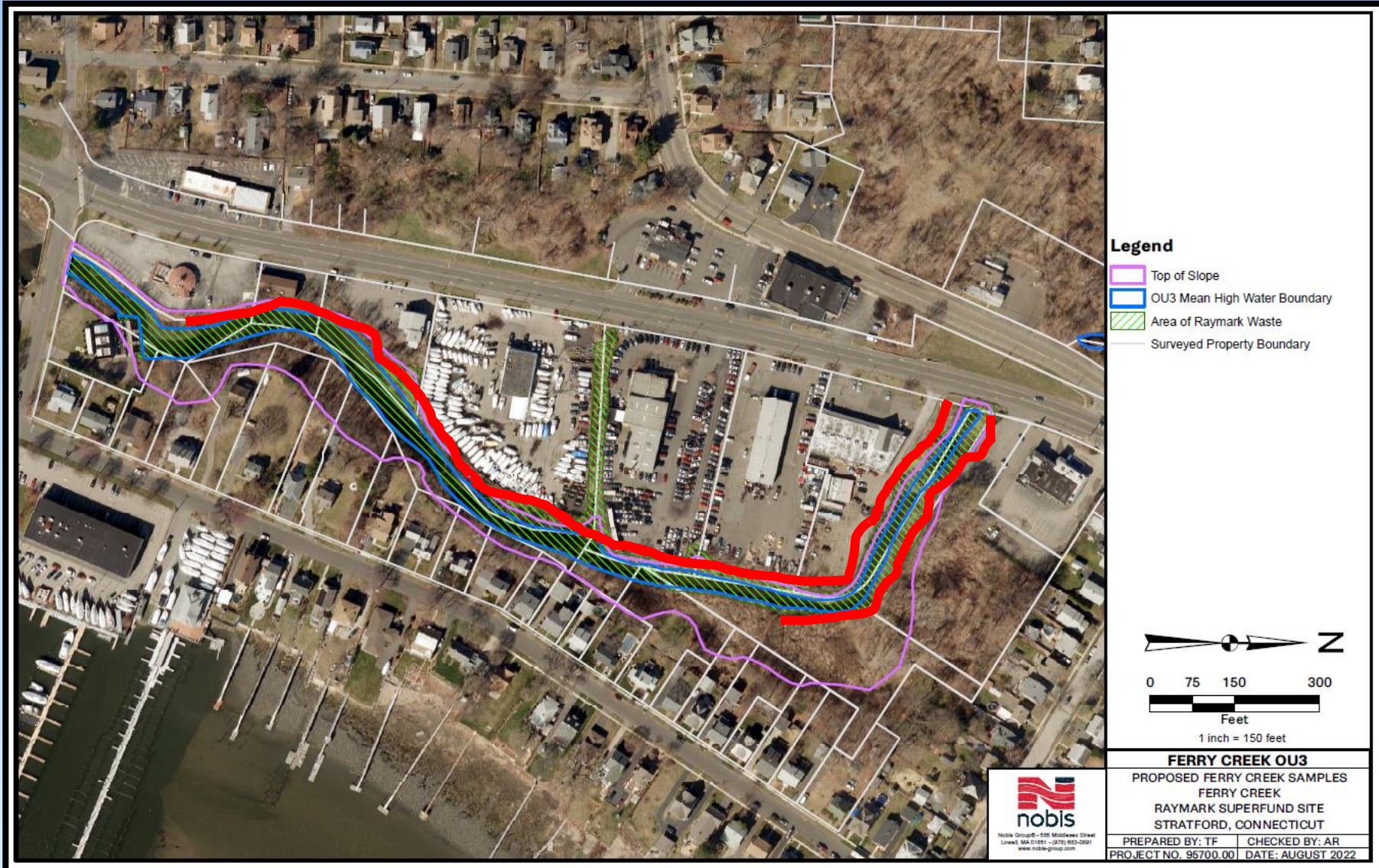
# 635 Ferry Boulevard (2023)





# OU3 Ferry Creek

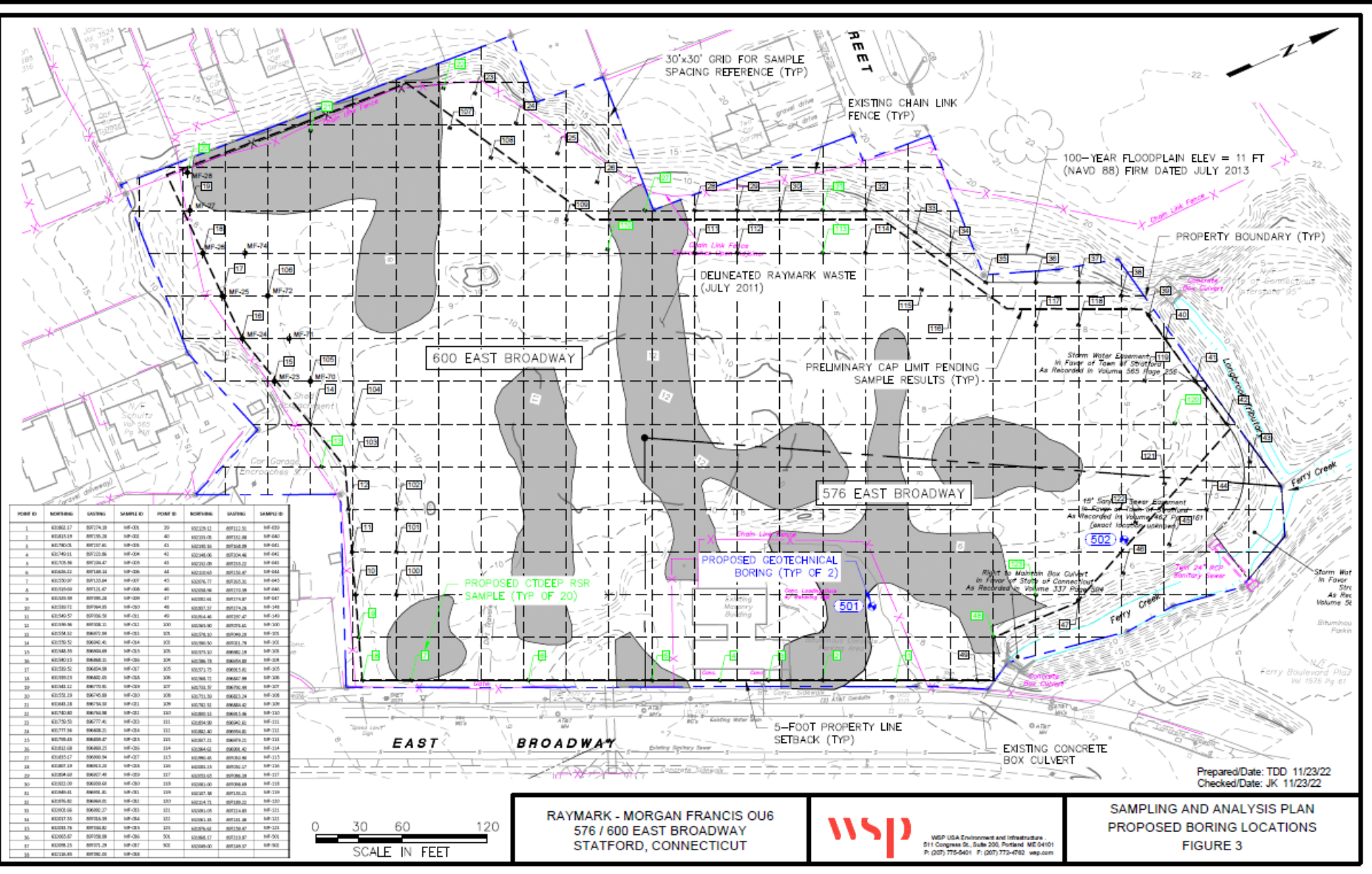
# Ferry Creek Remediation (2023)



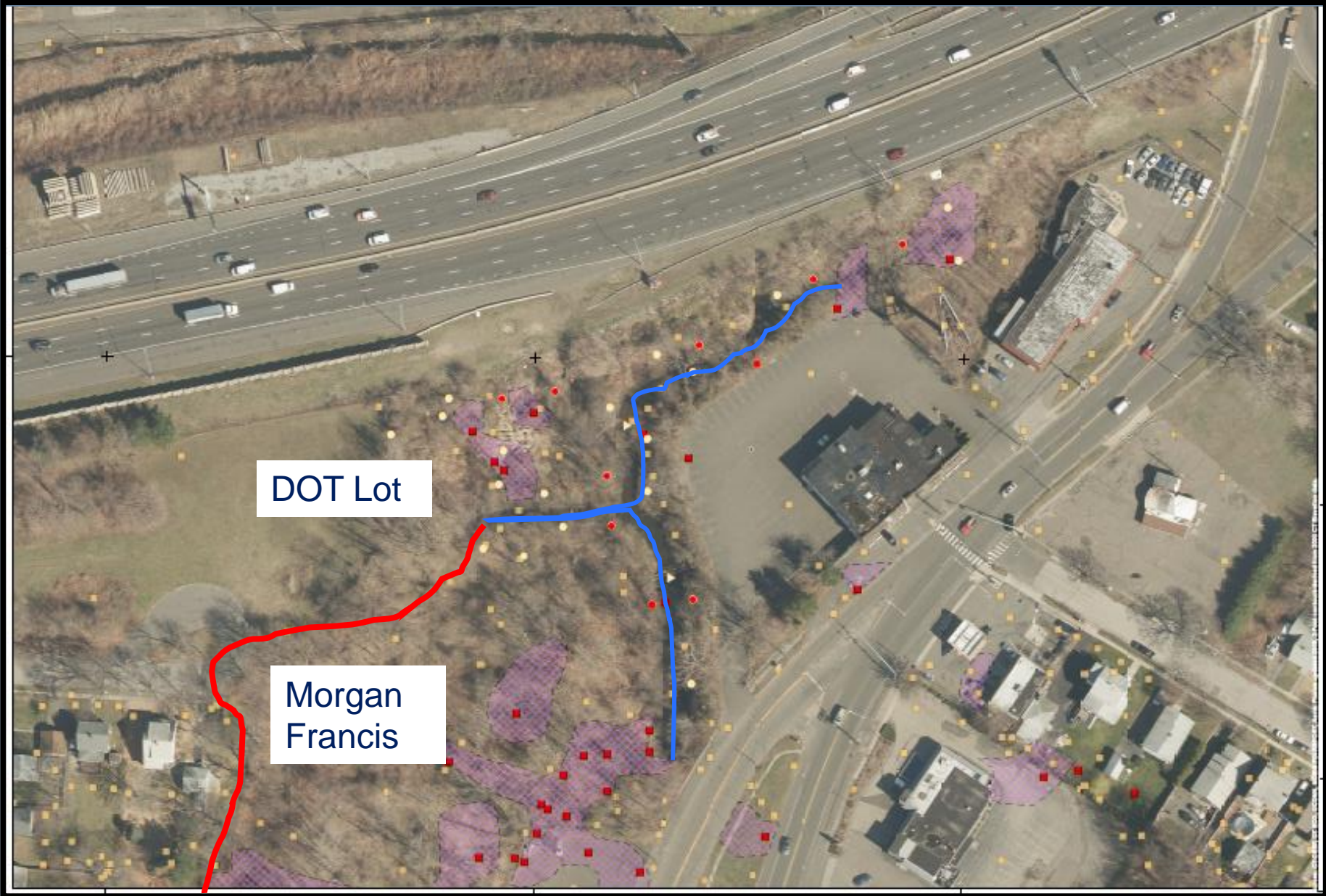
- Ferry Blvd to Broad Street
- About ½ mile
- Channel: 2ft of sediment
- Portions of banks (red): 4ft
- Total volume estimate:
  - Approx. 12,000 CY

# 576/600 East Broadway - Morgan Francis

- 2011 ROD
  - Cap in place
  - Storage units
- Update design
  - Recreational use
  - Consolidate adjacent RW
- Remedy decision in 2023



# Uppermost Ferry Creek and DOT Lot



# OU4 Updates

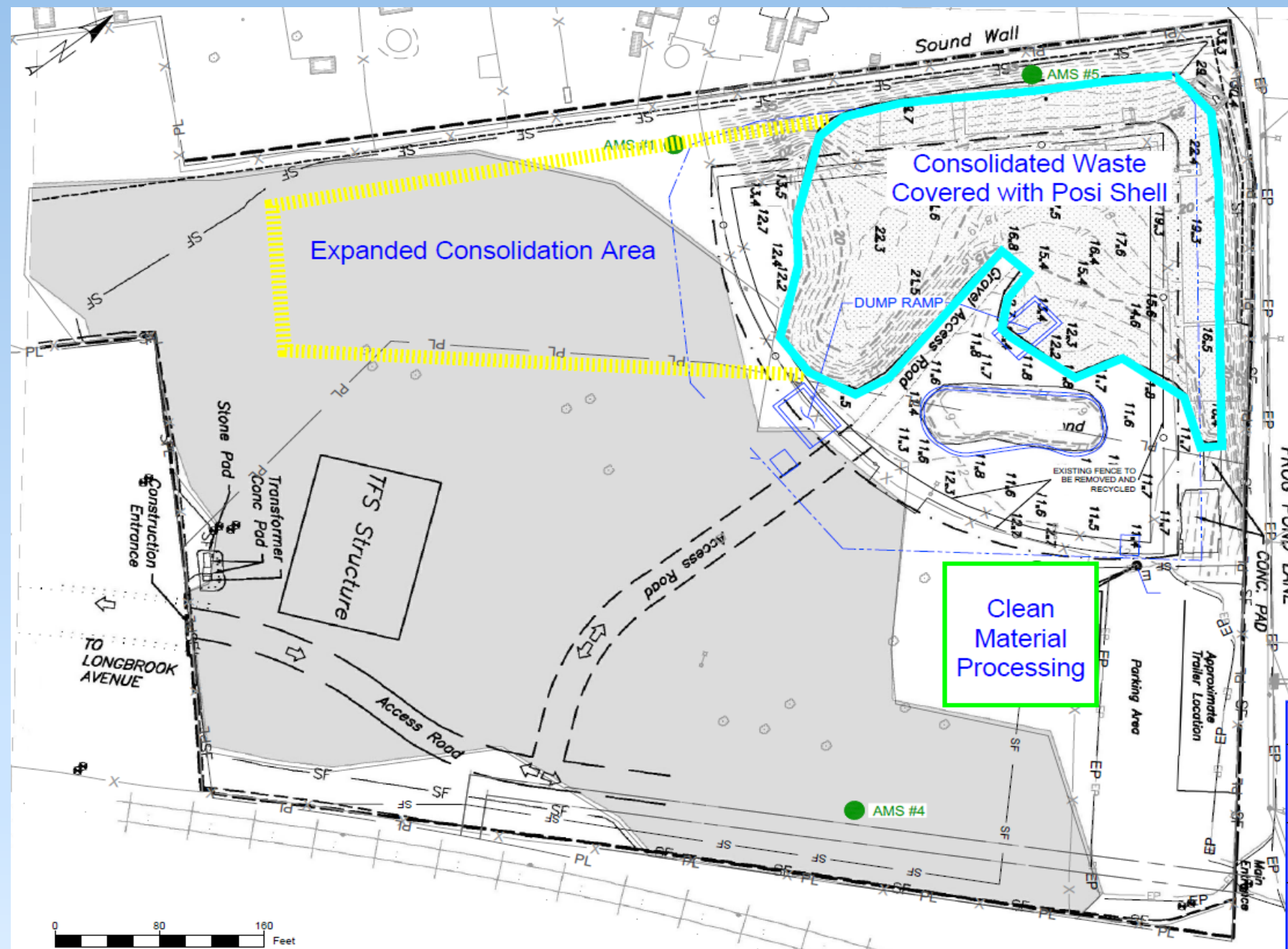
# OU4 Ballfield Work Completed or Ongoing Since November



- Approximately 48,000 CY of material has been consolidated, compacted, and covered to date
- Posi-Shell cover has been applied on all previously imported Raymark Waste at the Ballfield
- Stormwater conveyance line construction underway
- Pumpstation construction is underway
- 5 perimeter air monitors at OU4 are operating daily
- Winter operations (stockpile and cover material) in effect



# OU4 Consolidation Area



- Approximately 48,000 CY of material has been consolidated, compacted and covered
- Active consolidation area accepting material Beacon Point
- Winter operations - Beacon Point material will be stockpiled
- Posi-shell or approved cover placed over waste at end of each day

# OU4 Consolidation Area



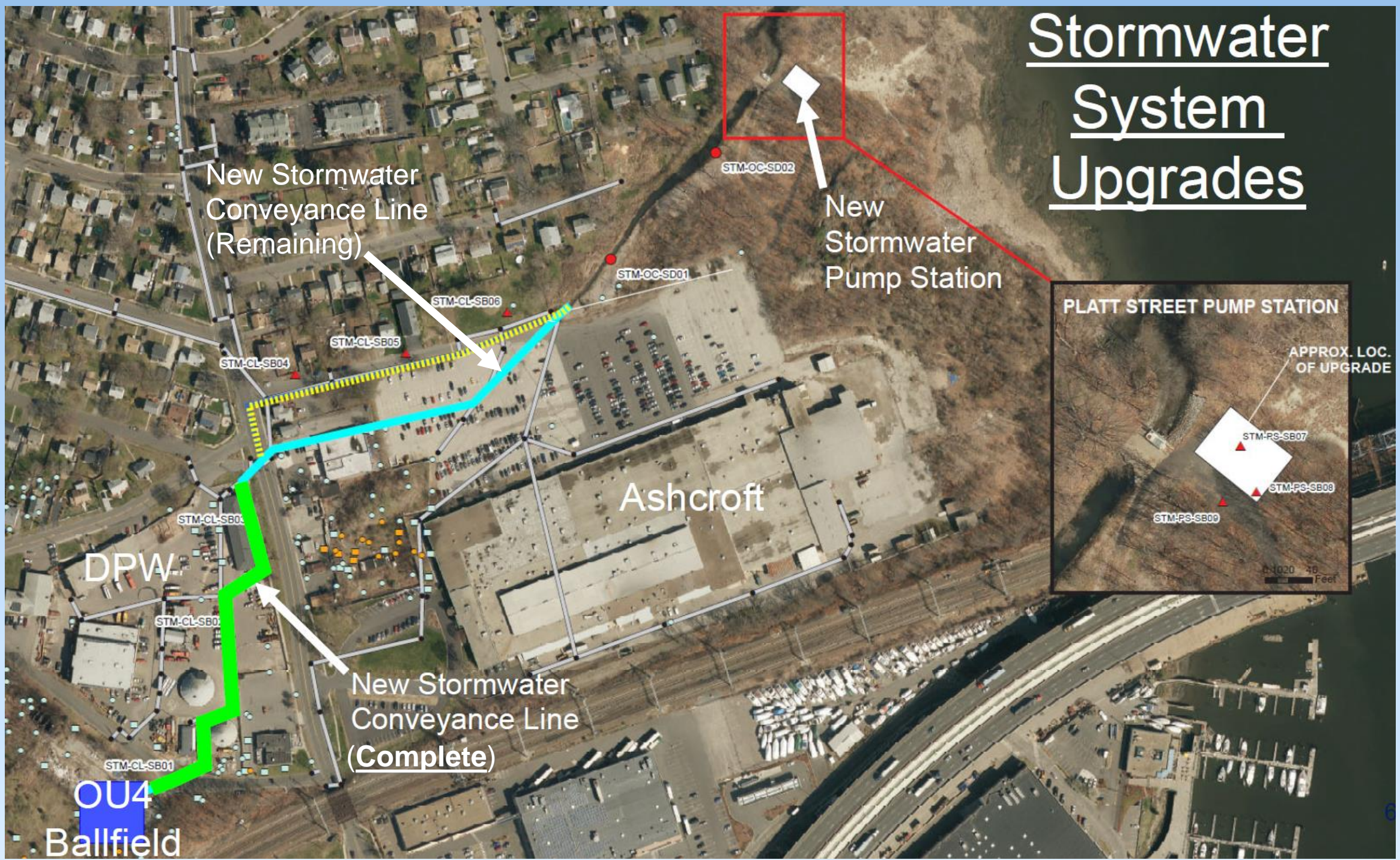
Material Placement Within OU4 Consolidation Area



Loading PHC Material for Off-Site Disposal

# OU4 Stormwater System

# Stormwater System Upgrades



New Stormwater  
Conveyance Line  
(Remaining)

New  
Stormwater  
Pump Station

Ashcroft

DPW

New Stormwater  
Conveyance Line  
(Complete)

PLATT STREET PUMP STATION

APPROX. LOC.  
OF UPGRADE

1:4020 46  
Feet

OU4  
Ballfield

# Conveyance Line



Box Culvert Installation at DPW

# Conveyance Line



## Helical Pile Installation

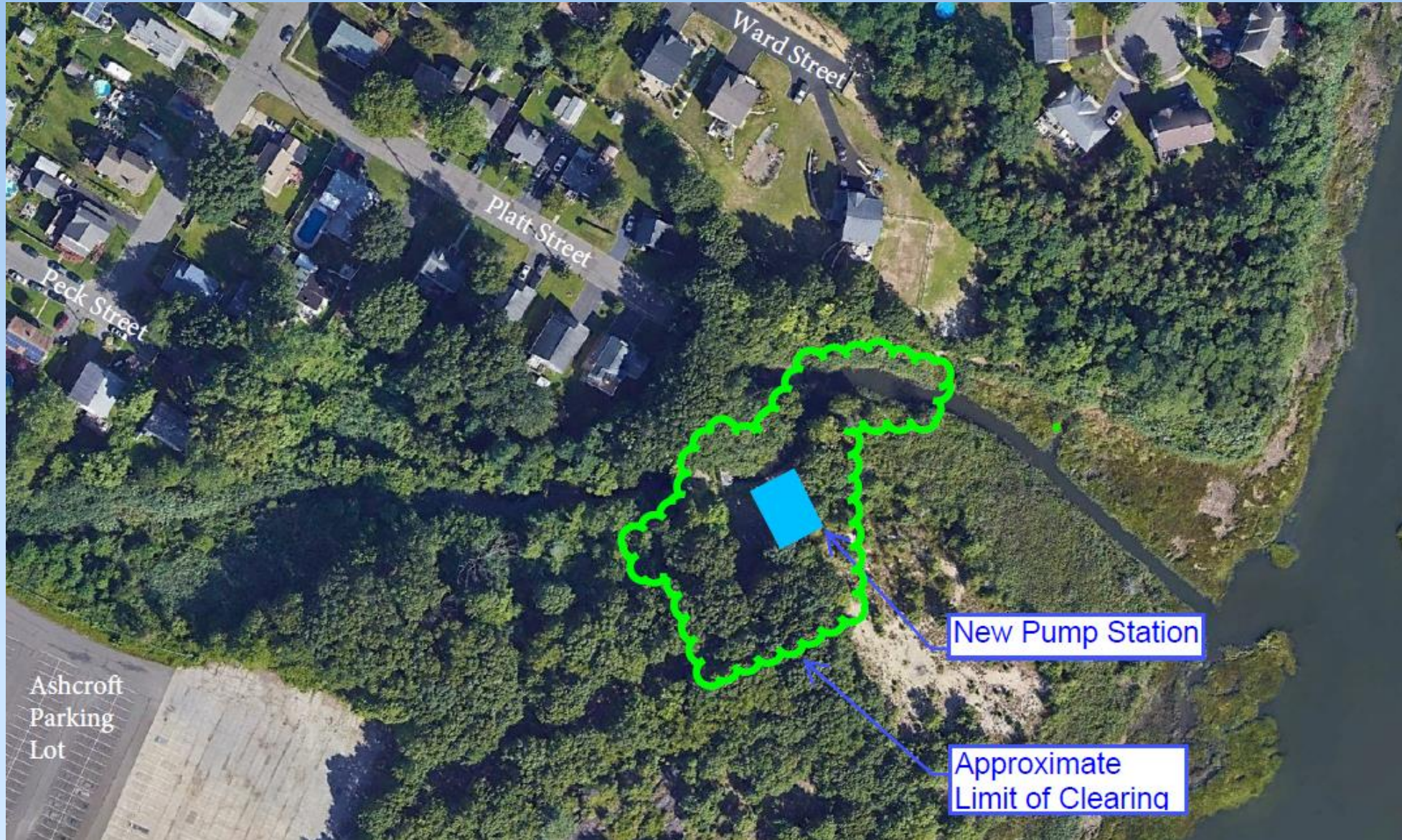
# New Pump Station

- Prime Contractor - P&S Construction
- Construction underway
- Expected complete summer 2024
- 4 Axial Flow Pumps
- 200 CFS Capacity
- Operates during significant storm and high-water events
- Masonry Pumphouse



# Pumpstation – completed and upcoming site work

- Site access and preparation complete
- Sheet pile installation complete
- Dewatering well point installation complete
- Minor clearing and installation of crane pad
- Generator and Pump Setup for dewatering
- Excavation of building footprint
- Blasting will be required to remove approximately 5-12' of underground ledge (rock) within the pumpstation footprint





# Pumpstation Site



Sheet pile installation



Dewatering well point installation

# Pumpstation – Ledge Removal



- Maine Drilling and Blasting
- Approach is to minimize ground vibrations as much as possible
- Home inspections will be conducted in the vicinity of the work
- The blast plan was submitted by the contractor and is under review
- EPA and USACE will coordinate with homeowners for home inspections
- Vibration monitors will be deployed
- Each blast event will generally occur between 10:00 AM and 11:00 AM
- It is estimated that there will be approximately 10 blast events over a period of 3 weeks
- Work is expected this winter pending plan approval
- Site will be secured from public
- Multiple 6000 lb blasting mats will be utilized

# Air Monitoring

# Raymark Air Monitoring Program

- Dust monitoring protects workers and abutting community
  - Dust Action Levels based on property and type of work
  - Action Levels = 0.014 (OU4) and 0.019 mg/m<sup>3</sup> (OU6) when Raymark Waste handled.
  - Action Level = 0.150 mg/m<sup>3</sup> when only clean soil handled
  - Chemical samples collected for lab analysis when Raymark Waste is handled
  - Low safety threshold – STOP WORK before any potential risk to workers or community
- Vibration monitoring conducted
  - STOP Work = 0.5 inches/second
- Weekly Air Monitoring, Chemical Data and Vibration Monitoring Reports posted on Town Raymark website



Chemical Sampling Port

Dust Monitoring Station



Personnel Monitoring

# Monitored Tasks – OU6

- Beacon Point- 3 Dust Meters, 3 Chemical Sample Collection Systems, no Vibration Monitoring
  - Excavation of Raymark Waste.
  - Backfill with Clean Imported Material.
- Excavation is not within 50 ft of a building, vibration monitoring not required at this time.
- No work was conducted the week of 12/26/22-12/30/22 due to holiday break.

Beacon Point- Excavation



Beacon Point- Placing Clean Fill



Beacon Point – Compaction Testing



# Monitored Tasks – OU4

- OU4 - 5 Dust Meters, 5 Chemical Sample Collection Systems, 5 Vibration Stations
  - Winter Operations
  - Accepting new PHC soil/loading treated PHC soil for offsite transport.
  - Stockpiling Beacon Point material.
  - Applying Posi-Shell.
- No work was conducted the week of 12/26/22-12/30/22 due to holiday break.

Loading PHC soils for offsite disposal within the TFS at OU4



Stockpiling Raymark Waste at OU4 Consolidation Area



Offloading Raymark Waste at OU4 Consolidation Area



# Monitored Tasks – Stormwater Conveyance System (SWC)

Installing helical piles for SWC at Ashcroft



- SWC (No Intrusive Work in RW) - 4 Vibration Stations, No Dust Monitoring
  - Helical Pile Installation
  - Box culvert installation



Backfilling trench after installing box culvert at DPW

Installed box culvert at DPW



# Air Monitoring Results

- Since 11/30/22 Public Meeting - No Exceedances of OU4 or OU6 Dust Action Level Criteria.
- No Chemical Action Levels Exceeded.
- No Health and Safety Risks to Workers or Residents.
- On 12/01/22 Stormwater Channel vibration meters were moved to new locations as work proceeds to new areas.
- Between 11/28 and 12/1 two vibration meters failed sensory checks. This was caused by the technician resetting the system during install of new SWC units and no exceedances were identified.





# Project Schedule

# Consolidation Remedy Schedule



- OU6

- Cleanup Ongoing - Beacon Point
- 2023 Summer – Lockwood Ave
- 2023 Fall – Blasius Dealership
- 2023-2024 Winter/last: EPA Office/Former Ski Shop
- TO BE SCHEDULED: 3<sup>rd</sup> Ave ROW and 635 East Broadway

- OU3

- 2023 April to Dec : Ferry Creek (East Broadway to Broad St)

- OU4

- 2024: Construct cap

Construct  
Stormwater  
And Pump  
Station

Morgan  
Francis  
Design

# Next CAG Meeting March 29<sup>th</sup> at 6:30pm

For more information about the Raymark Superfund Site, including copies of presentation slides, documents and meeting minutes, please visit: [stratfordct.gov/raymark](http://stratfordct.gov/raymark)

# Thank you for joining!

- Visit [stratfordct.gov/Raymark](http://stratfordct.gov/Raymark) for updates, contact information, air monitoring results, meeting dates, meeting recordings and Powerpoint slides
- Email Alivia at: [acoleman@townofstratford.com](mailto:acoleman@townofstratford.com) with further questions, concerns, feedback or to sign up for email distribution list.