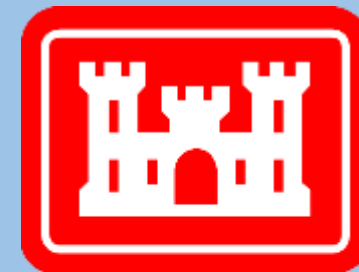


# Community Advisory Group Meeting No. 38

## Raymark Industries, Inc. Superfund Site Stratford, CT

Jim DiLorenzo, EPA  
Ron Jennings, EPA  
Jeff Saunders, EPA  
Taylor Freeman, EPA  
Mike Looney, USACE  
Rachel Leonardi, USACE  
Alivia Coleman, Health Dept.

January 31, 2024



**US Army Corps  
of Engineers®**

To download presentation slides visit:

**[Stratfordct.gov/Raymark](http://Stratfordct.gov/Raymark)**

# Hybrid Meeting Guidelines

## Virtual Attendees:

- Everyone will be muted throughout the presentations - please stay muted to eliminate background noise.
- Hold questions until the end of each presentation.
  - Use the chat box.
  - Mute yourself after speaking

## Everyone:

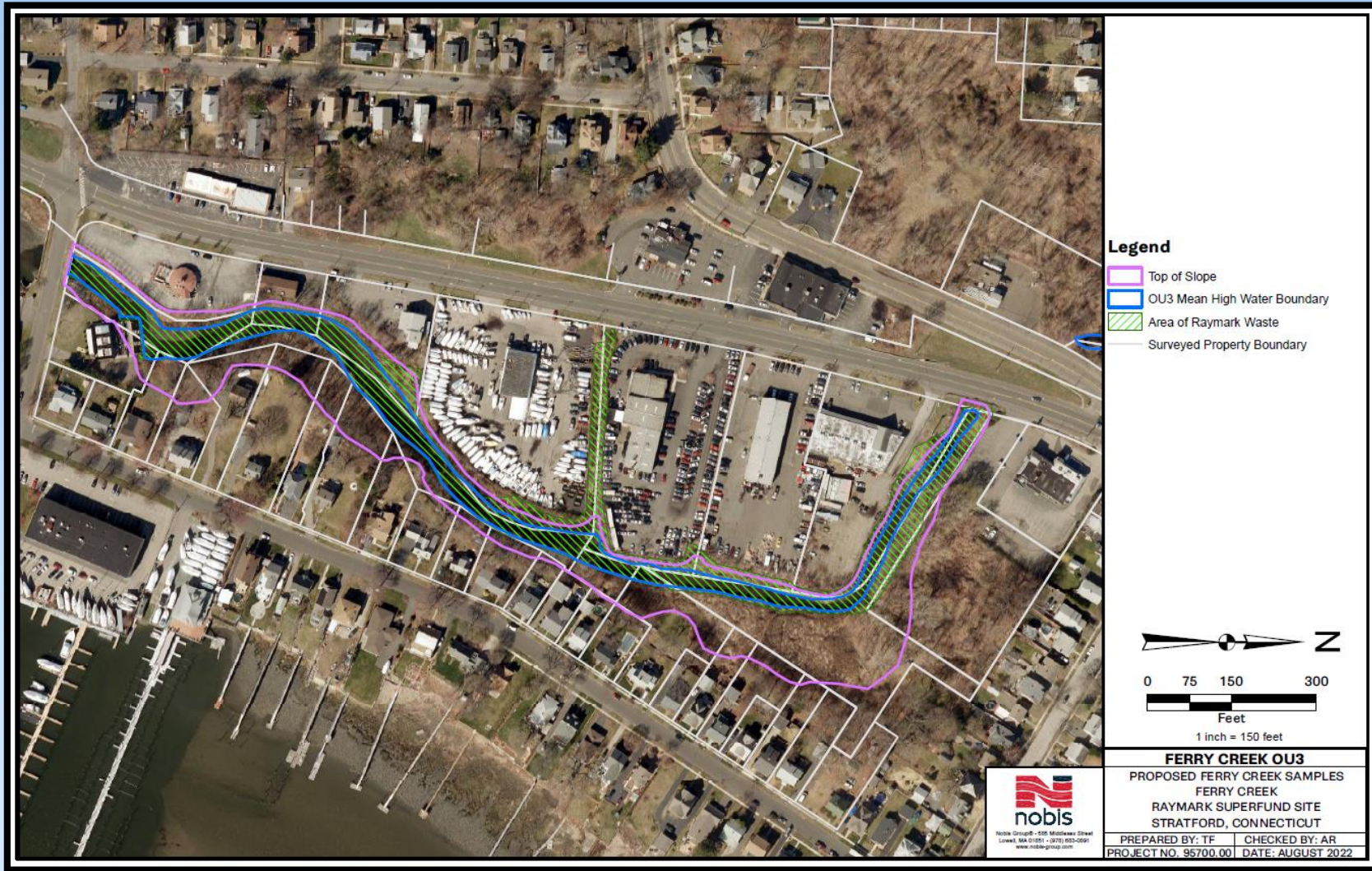
- Ask questions related to the presentation topic
- Please be respectful of time, so everyone has a chance to speak
- Be respectful and patient.
- Talk one at a time.
- **This meeting will be recorded.**

# AGENDA

- INTRODUCTIONS AND MEETING RULES
- OPERABLE UNIT 3 and 6 (OU3, OU6) UPDATE
- LOCKWOOD AVENUE REMEDIATION
- OPERABLE UNIT 4 (OU4) UPDATE
- STORMWATER PUMP STATION
- OTHER OPERABLE UNITS
- OVERALL PROJECT SCHEDULE

# OU3 Update

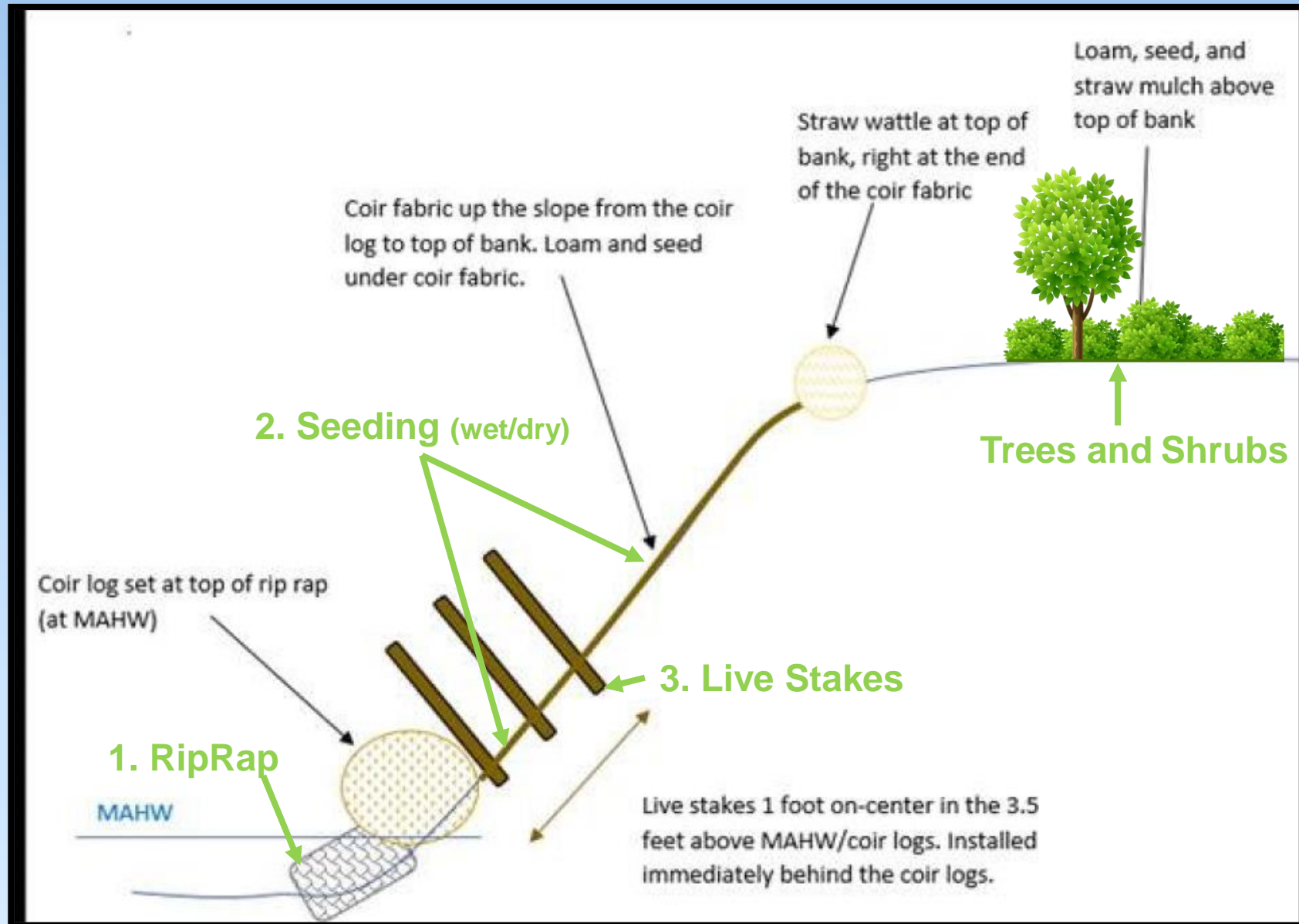
# OU3 Ferry Creek Remediation



## OVERVIEW

- Ferry Blvd to Broad St (1/3 mile)
- Excavation from June to October
  - 2ft sediment removal channel
  - 4ft soil removal banks
- RW Removed: 12,100cy
- PHC removed: 277cy
- \*\*2 Part Restoration
  1. Seeded coco matts and live stakes for banks (Fall 2023)
  2. Trees/shrubs top of bank (Spring 2024)

# OU3 Restoration – Creek Banks



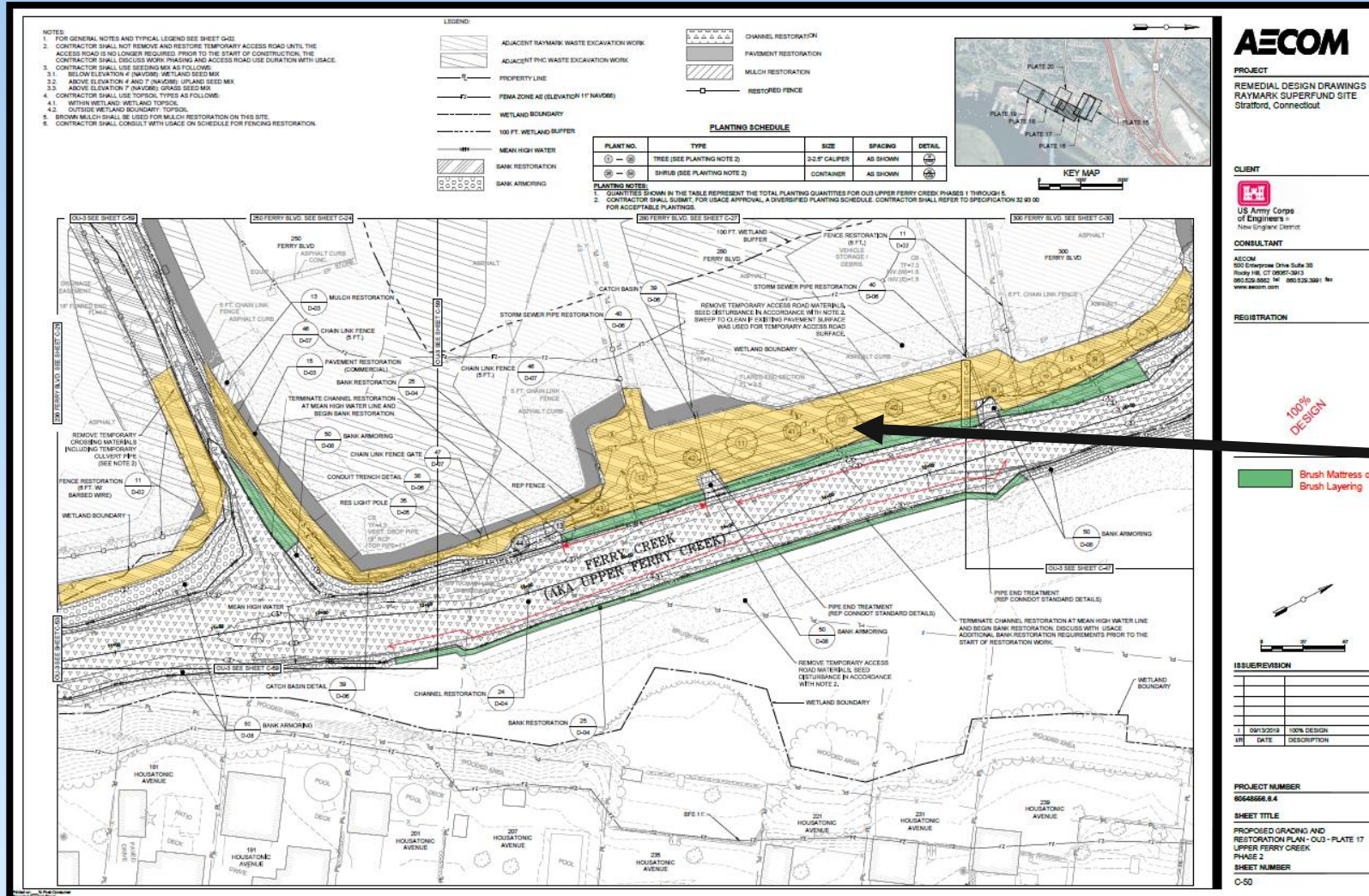
# Part 1 - Bank Restoration



- **8,560 live stakes**
- **3,000 feet of coir logs**
- **1.1 acres of coir (coco) matts**



# Part 2 – Top of Bank



**AECOM**

PROJECT  
REMEDIAL DESIGN DRAWINGS  
RAYMARK SUPERFUND SITE  
Stratford, Connecticut

CLIENT



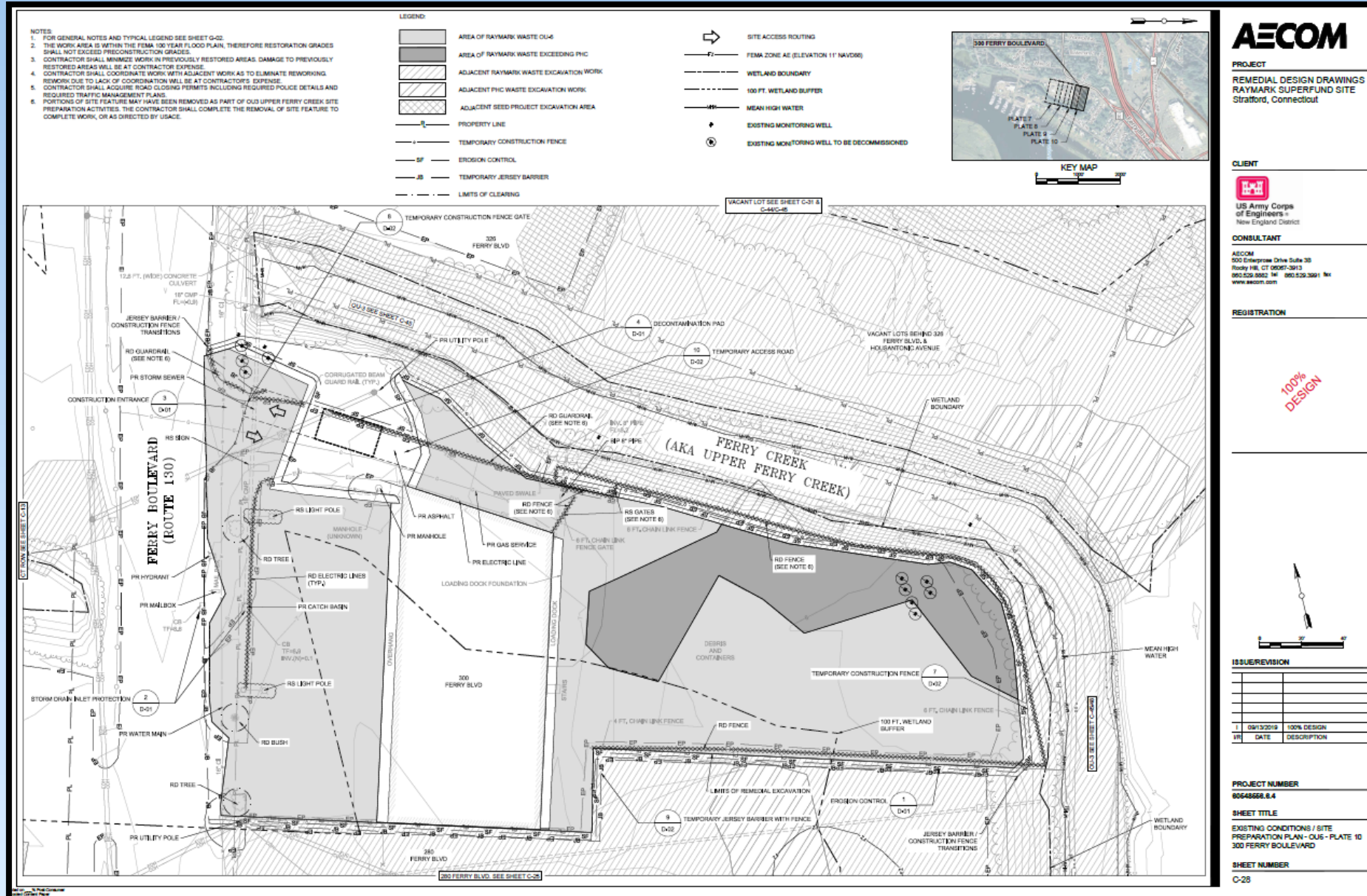
CONSULTANT  
AECOM  
500 Enterprise Drive Suite 30  
Burlingame, CA 94010-3913  
949.252.8800 fax 949.252.3881  
www.aecom.com

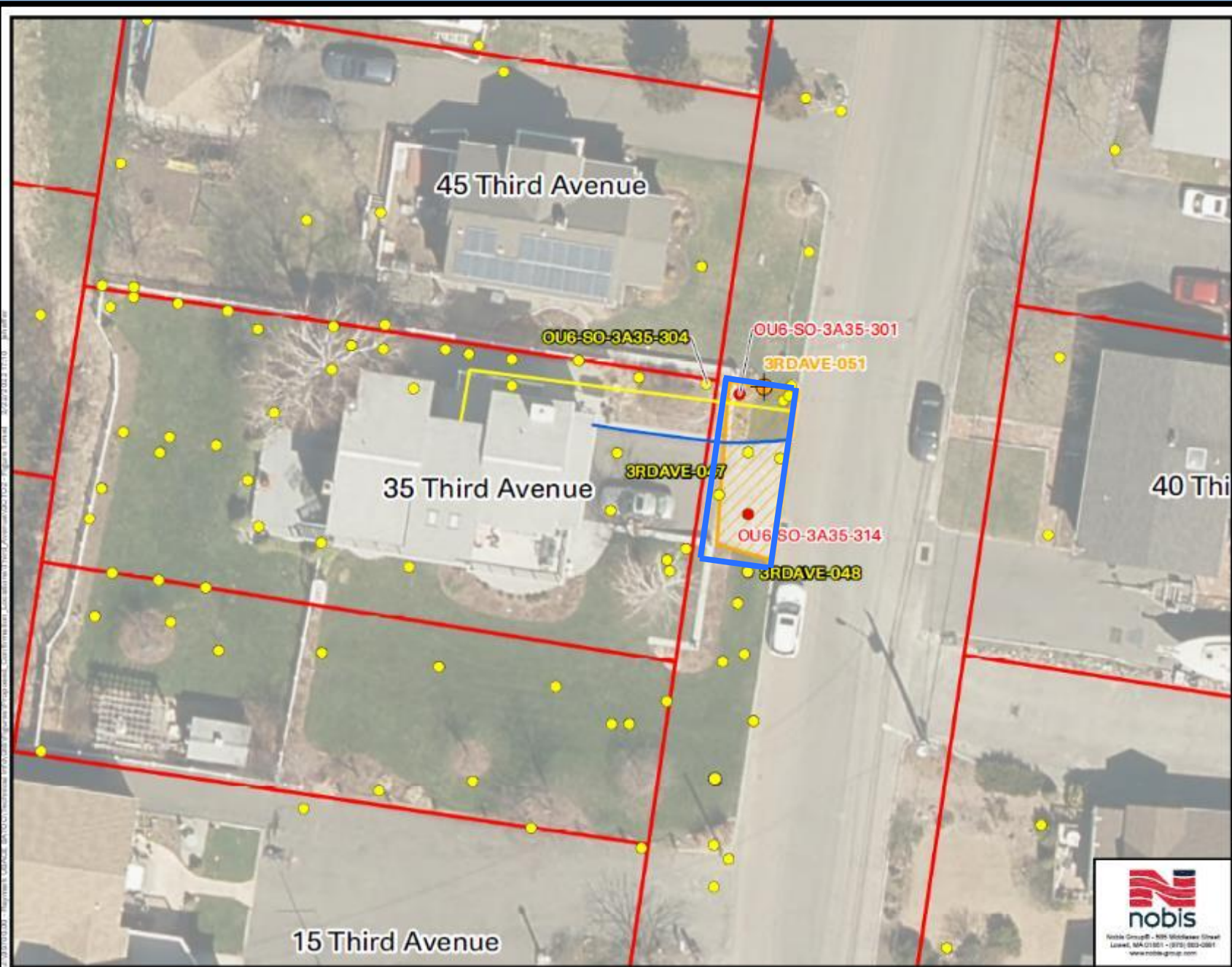
REGISTRATION

- 233 trees (e.g., pine, elm, oak, cedar, arborvitae)
- 811 shrubs (e.g., holly, bayberry, rhododendron, summer sweet, sumac)

# Remaining OU6 Properties

# 300 Ferry Blvd – EPA Office

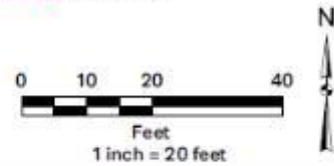




- Note:**
1. USACE evaluation of sample results determined that sample did not meet all thresholds for step-out criteria and further step-out sample collection is not required.
  2. USACE evaluation of sample results determined that sample met all thresholds for step-out criteria and further step-out sample collection is required.
  3. Raymark Waste and Non-Raymark Waste borings, and RW Areas from the Remedial Design Drawings and Pre-Design Investigation.
  4. Property boundaries are derived from the Remedial Design Drawings.
  5. According to FEMA's National Flood Hazard Layer, the property 35 Third Avenue and parcels to the north, east, and south are located in the AE EL-11 Floodplain. Parcels to the west are located in the VE EL-14 Floodplain.
  6. Historical Samples 0-4' include samples collected from the following intervals: 0-4' bgs, 1-4' bgs, 2-4' bgs, 1-3' bgs, 2-3' bgs, and 3-4' bgs.
  7. Raymark Waste designation in historical samples are based on exceeding the Raymark Waste Criteria.
  8. Locations of site features depicted hereon are approximate and given for illustrative purposes only.

**Legend**

- Proposed Confirmation Boring
  - Post Construction Confirmation Sample
- Raymark Waste detected? (0-4')
  - Yes
  - No
- Historical Samples 0-4'
  - Raymark Waste
  - Non-Raymark Waste
- Water Line
- Natural Gas Line
- Raymark Waste Limits
- Stratford Parcels



**FIGURE 1 - 35 THIRD AVE 0-4FT BGS**



GCTO2  
 35 THIRD AVENUE  
 RAYMARK SUPERFUND SITE  
 STRATFORD, CONNECTICUT

PREPARED BY: JTS	CHECKED BY: AR
PROJECT NO. 95700.00	DATE: FEBRUARY 2022

Third  
 Ave  
 ROW

Spring  
 2024

# Blue Goose

**Note:**

1. USACE evaluation of sample results determined that sample did not meet all thresholds for step-out criteria and further step-out sample collection is not required.

2. Raymark Waste and Non-Raymark Waste borings, and RW Areas from the Remedial Design Drawings and Pre-Design Investigation.

3. Historical Samples 0-4' include samples collected from the following intervals: 0-4' bgs, 1-4' bgs, 2-4' bgs, 1-3' bgs, 2-3' bgs, and 3-4' bgs.

4. Historical Samples 0-2' include samples collected from less than or equal to 2' bgs.

5. The samples will be collected from the Pre Utility Confirmation Sample at depths 0-2', 2-4', and 4-8'.

6. Locations of site features depicted hereon are approximate and given for illustrative purposes only.

**Legend**

◆ Samples to be held at the Lab

◆ Proposed Step-out Samples

**Confirmation Stepout Sample Required?**

◆ Yes

◆ No

◆ See Note 1

**AECOM PDI Samples**

■ Raymark Waste

■ Non-Raymark Waste

**Historic Samples 0-4'**

● Raymark Waste

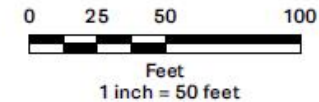
● Non-Raymark Waste

□ Approx. Survey Boundaries

▨ Raymark Waste Limits

▨ PHC

▨ OU3 Raymark Waste Limits



**FIGURE 326FB-A**

RW AND PHC EXTENT VERTICES  
VACANT LOT BEHIND 326 FERRY BLVD  
RAYMARK SUPERFUND SITE  
STRATFORD, CONNECTICUT



PREPARED BY: DFM  
PROJECT NO. 95700.00

CHECKED BY: AR  
DATE: SEPTEMBER 2023

# OU3/OU6 REMEDIATION TRACKING TABLE

Area	Location	Excavation Dates	Volume (cy)	Truck Trips	Properties
Lockwood Ave	Phase 1	**ongoing	1,945	199	1
EPA HQ	300 Ferry Blvd	**ongoing	2,580	219	1
			224	23	1
Blue Goose	326 Ferry Blvd	Dec 2023	347	35	1
Big Jim's	170 Ferry Blvd	Sept/Oct 2023	1,140	80	1
Blasius	280 Ferry Blvd	Ongoing	5,996	546	1
			1,785	163	1
OU3 Ferry Creek	FB to Broad	June 2023 to Sept 2023	12,706	1,280	1
			710	70	1
<b>TOTALS TO DATE =</b>		<b>Raymark Waste</b>	<b>80,126</b>	<b>6,764</b>	<b>27</b>
		<b>PHC Waste</b>	<b>8,373</b>	<b>785</b>	<b>12</b>

# OU6 Remaining Properties

Area	Location	Excavation Dates	Estimated Volume (cy)
<b>Lockwood Ave</b>	Phase 1 and Phase 2	**ongoing	10,000 (0)
<b>EPA Office</b>	300 Ferry Blvd	**ongoing	3,500 (1,000)
<b>3<sup>rd</sup> Avenue</b>	3 <sup>rd</sup> Avenue	Spring 2024	100 (0)
<b>Estimated Remaining Volume</b>		<b>Raymark Waste</b>	<b>13,600</b>
		<b>PHC Waste</b>	<b>1,000</b>

## Estimated Final Volumes

Raymark Waste: 80,126cy+13,600cy = about **95,000** cubic yards

PHC Waste: 8,372cy+1,000cy = about **9,500** cubic yards

# OU6 Lockwood Avenue



# Lockwood Avenue

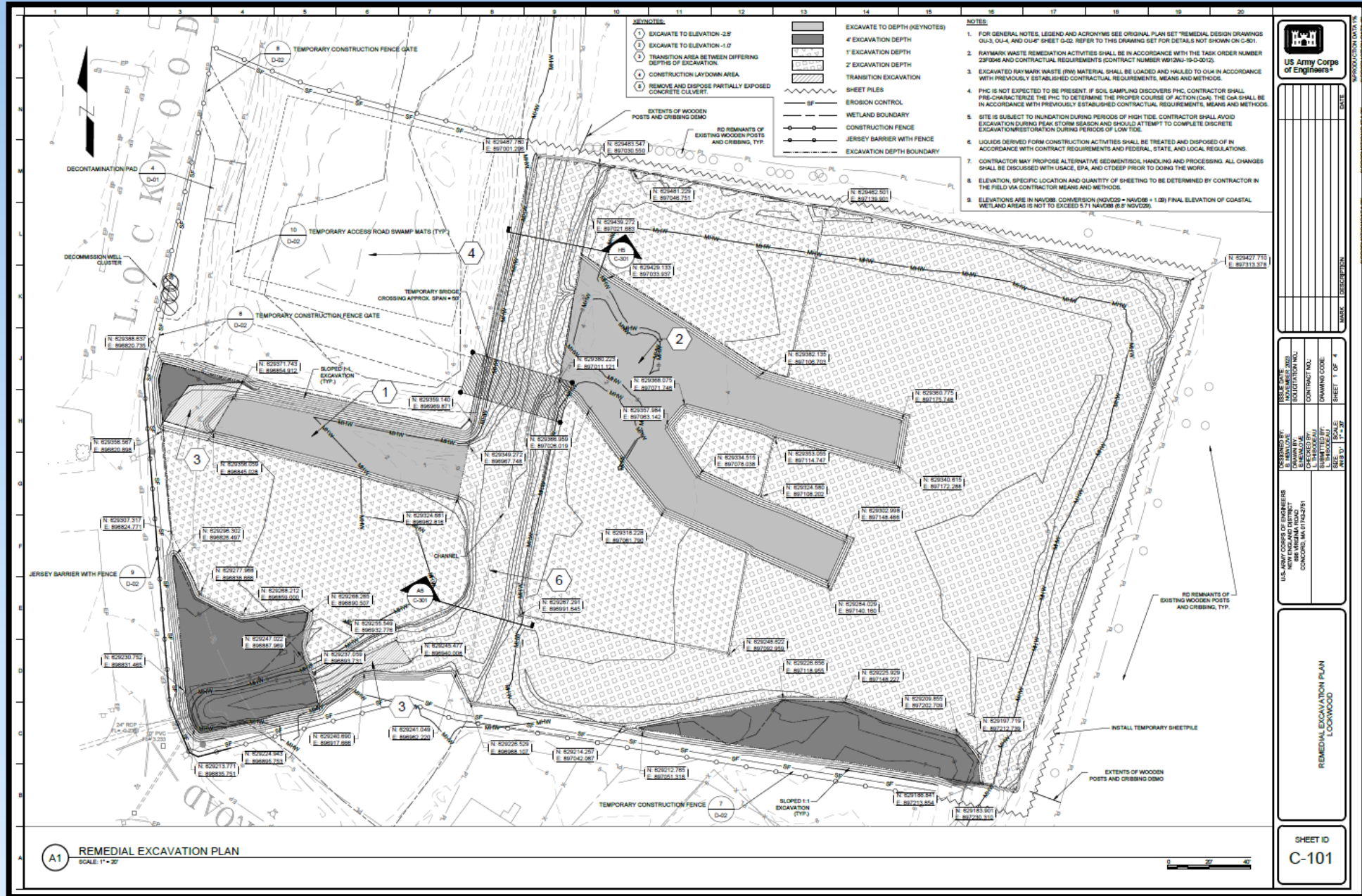
- ~ 4 acres
- 12,000cy RW
- Phase 1: Tidal wetlands and southern channel
- Phase 2: Non-tidal wetland and northern channel
- Clean Culverts
- Northern Wetland
- Bulkhead



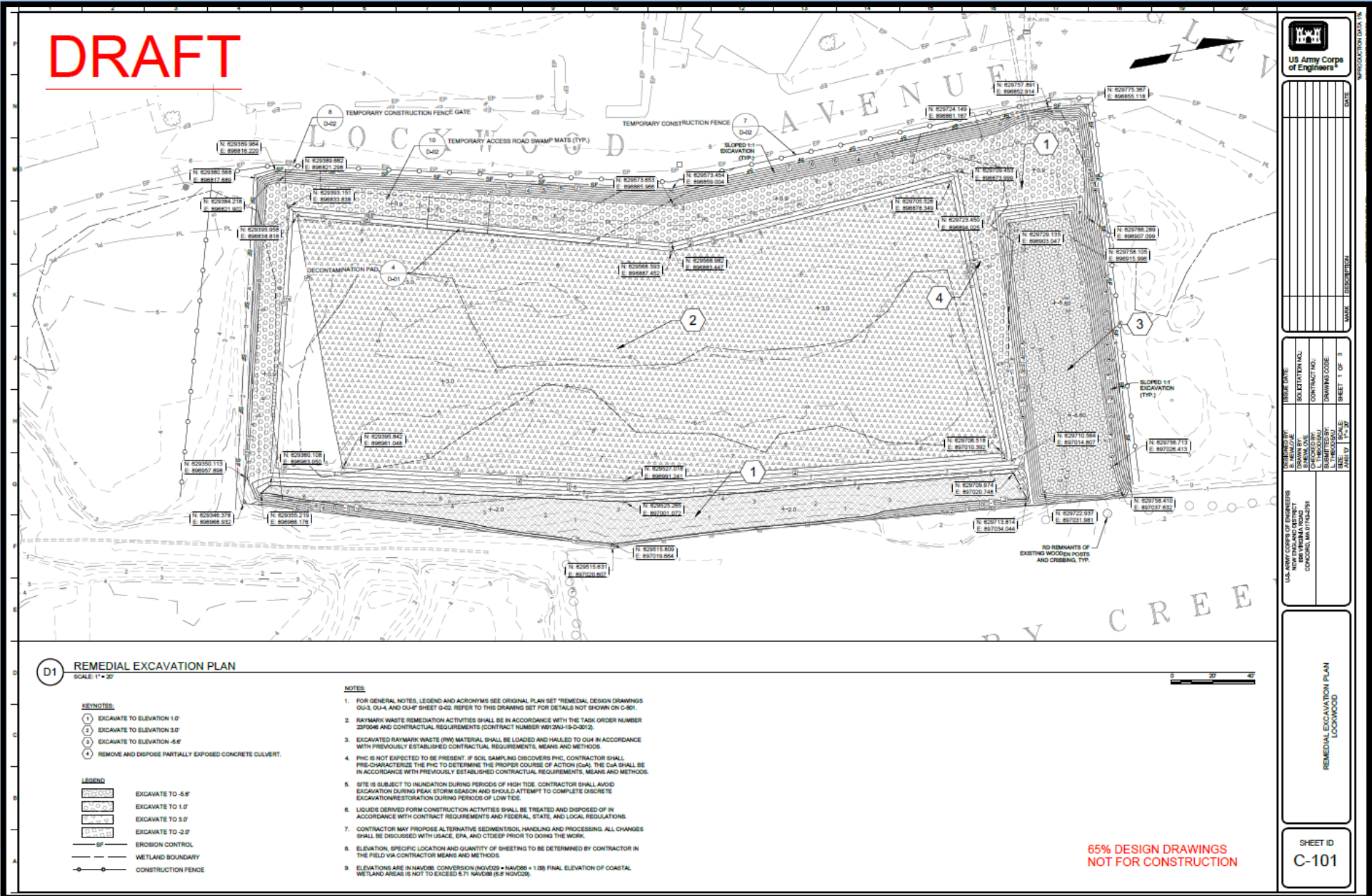
# Extent of Raymark Waste/Sampling



# Phase 1 Remediation (Jan to March 2024)



# Phase 2 Remediation (March to June 2024)



# Clearing Phase 2



# Flooding in Early January



# Phase 1 Excavation



# HYDREMA (Phase 1 Excavation)





# OU4 Updates

# OU4 Consolidation Area Work Completed or Ongoing Since November



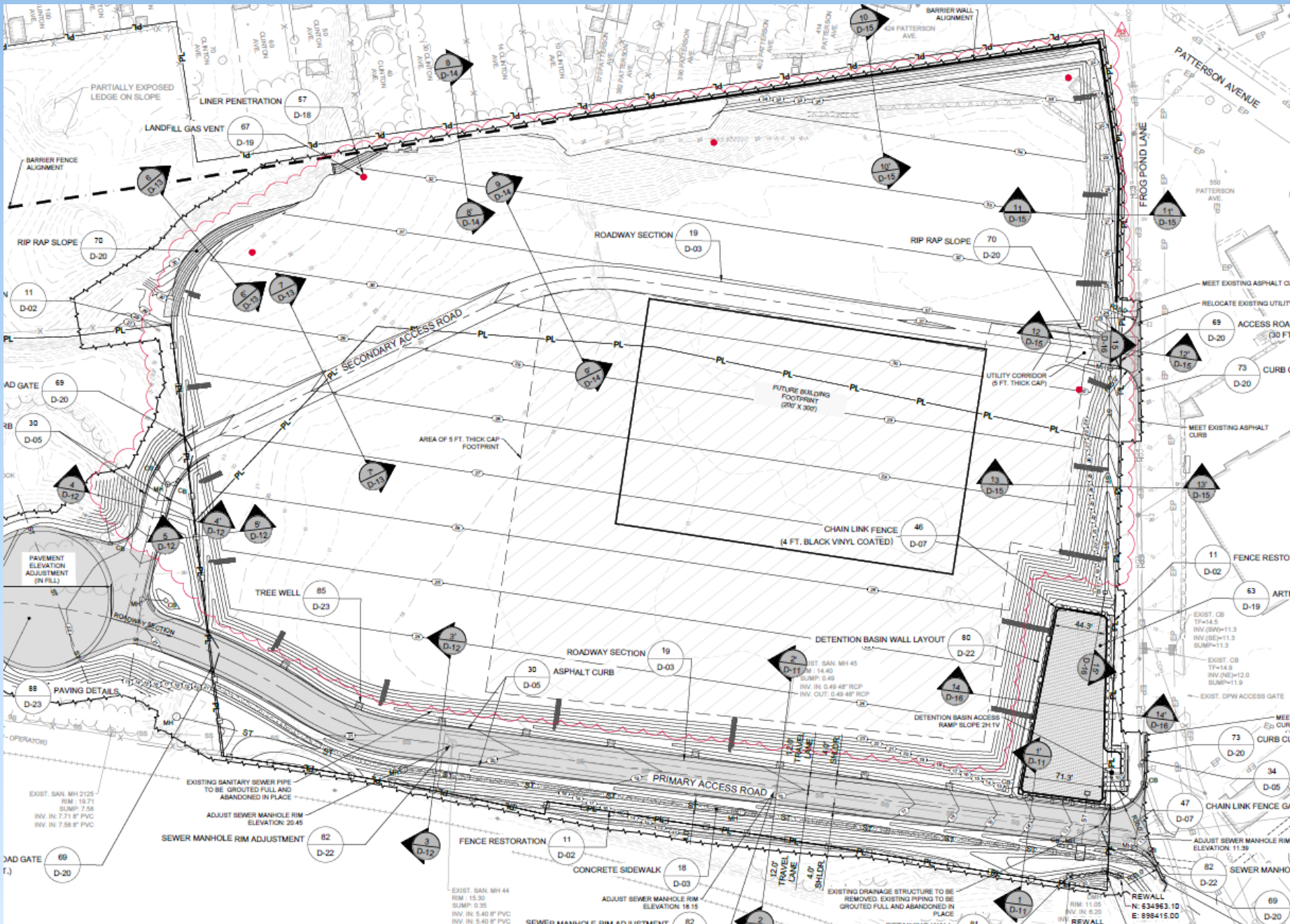
- Approximately 81,000 CY of material has been consolidated, compacted, and covered to date
- Posi-Shell cover has been applied on all previously imported Raymark Waste at the Ballfield
- 6 perimeter air monitors at OU4 are operating daily
- Stormwater treatment plant is operating at the consolidation area as needed
- Stormwater conveyance line construction complete
- Pumpstation construction is underway
- Final grading design revisions are complete

# OU4 Consolidation Area



- Approximately 81,000 CY of material has been consolidated, compacted and covered
- Winter operations underway (stockpiling)
- Field office trailer relocation to OU4 entrance at Haul road
- Permanent Stormwater Detention basin construction
- Final grading for cap placement to begin spring 2024

# OU4 Consolidation Area Final Grading



- Final grading design revisions complete
- Final elevation 2' lower than original design
- Maximum elevation is will be approximately 35'
- Access from Frog Pond Lane and Longbrook Ave via Haul Road

# OU4 Consolidation Area Cap



- Approximately 11 acres of cap
- An area of approximately 4 acres will be able to accommodate a structure and parking
- Stormwater detention basin will be primary collection point for all runoff

# OU4 Consolidation Area

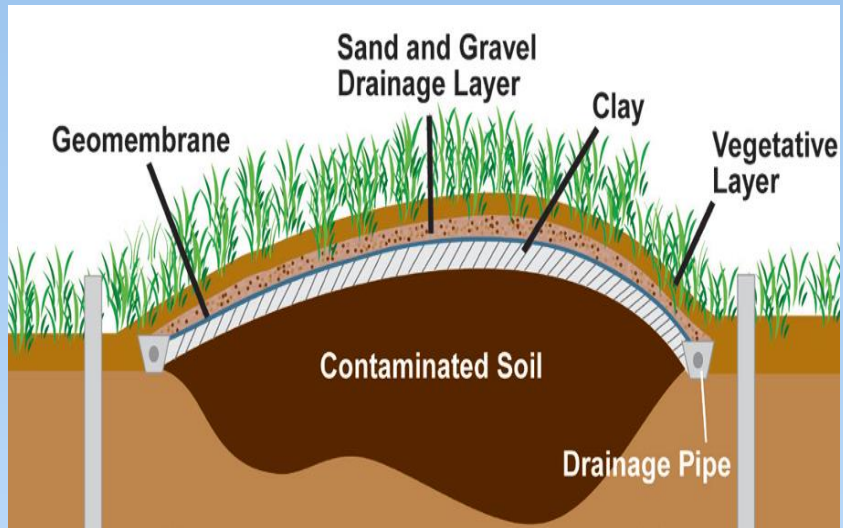
Recent Aerial Image



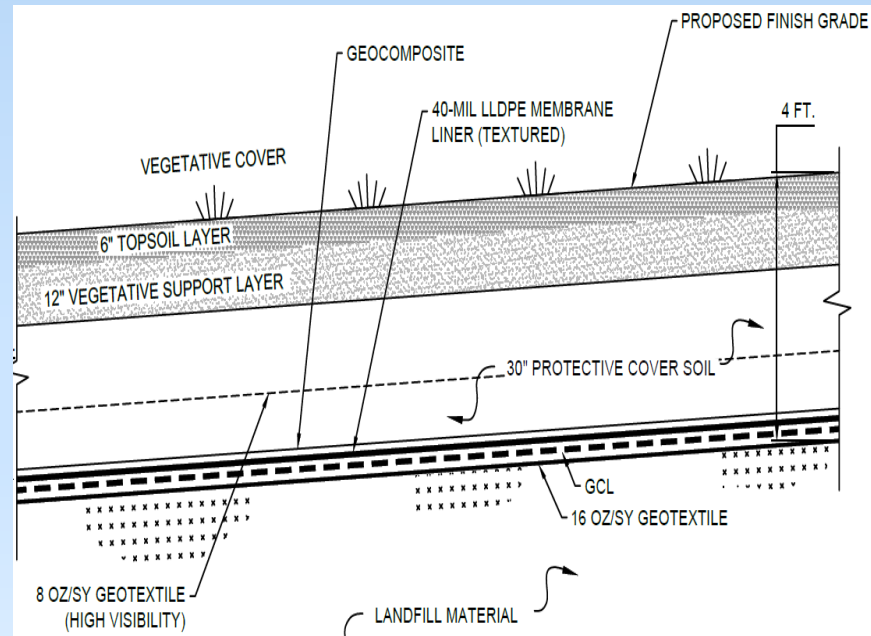
Design Rendering



# OU4 Cover System



- 3-D concept (above) based on current design
- Site design accommodates future use by the Town
- Section of cap designed for future development / use. Will accommodate a variety of options.
- Access from Frog Pond Lane and Longbrook Ave via Haul Road
- Site stormwater will be collected and carried via new conveyance system and pumpstation



# OU4 Stormwater System



# Stormwater System Upgrades



New  
Stormwater  
Pump Station



Ashcroft

STM-CL-SB06  
STM-CL-SB05  
STM-CL-SB04

STM-CL-SB03

DPW

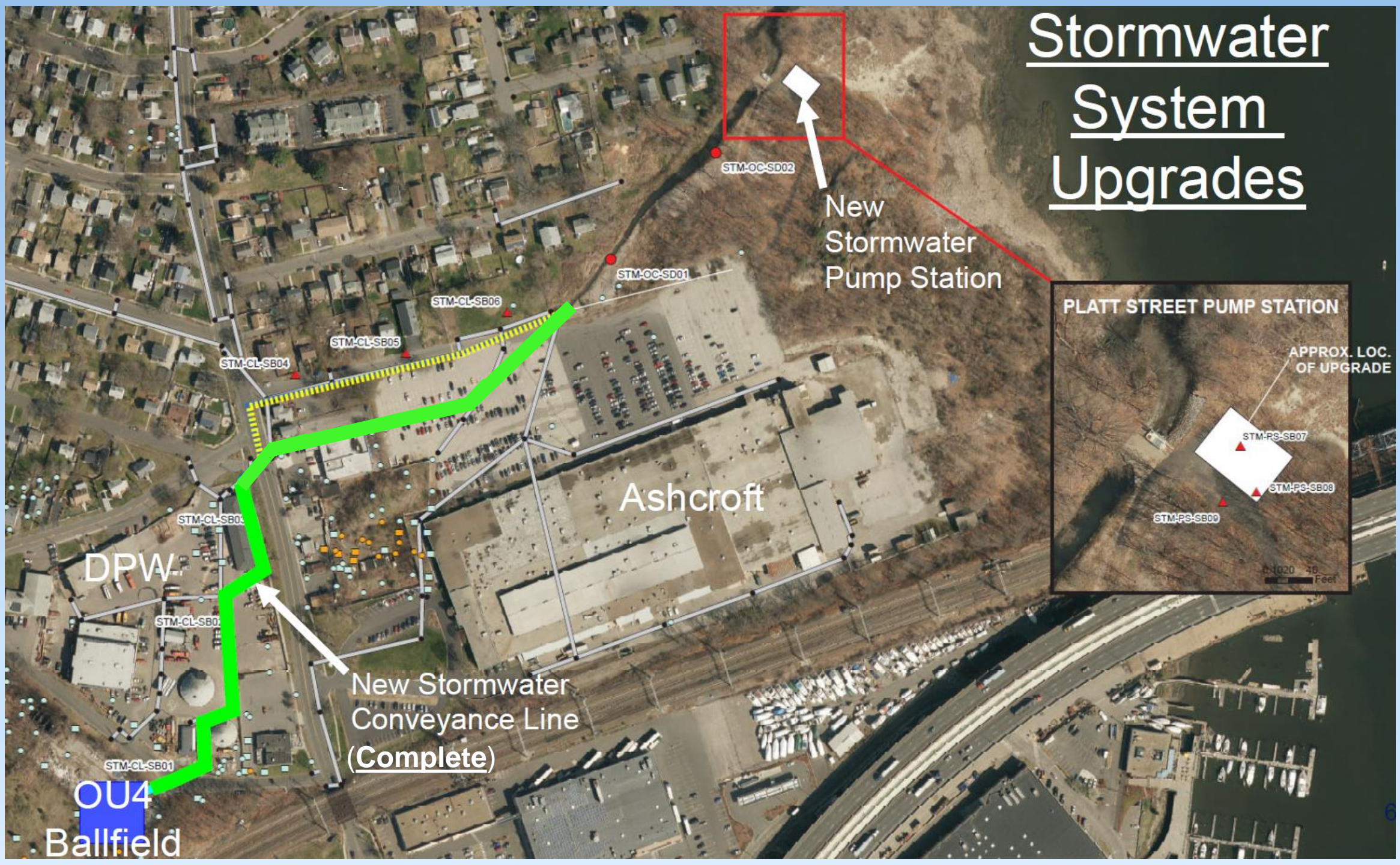
STM-CL-SB02

New Stormwater  
Conveyance Line  
(Complete)

STM-CL-SB01

OU4

Ballfield



# New Pump Station

- Will manage future stormwater runoff from OU4 and adjacent Town stormwater systems
- P&S Construction – Prime contractor
- Construction underway
- Construction expected substantially complete end of CY 2024
- Operates during significant storm and high-water events



# Pumpstation Excavation



Jan 30, 2024 9:04:58 AM  
41.20758597N 73.11439734W  
77 Platt St, Stratford, CT 06614, USA

# Pumpstation – completed and upcoming site work

- Excavation of the previously blasted rock is complete
- Removal of the earthen access ramp in the excavation is underway
- Conduit placement and concrete work for the electrical duct bank installation underway
- Placement of gravel pad for pumpstation foundation starting next week
- Concrete work for the pumpstation to begin in February



# Air Monitoring

# Raymark Air Monitoring Program

- Dust monitoring protects workers and abutting community
  - Dust Action Levels based on property and type of work
  - Action Levels = 0.014 (OU4) and 0.019 mg/m<sup>3</sup> (OU3 and OU6) when Raymark Waste handled.
  - Action Levels = 0.075 mg/m<sup>3</sup> (OU4 Early Detection Station)
  - Action Level = 0.150 mg/m<sup>3</sup> when only clean soil handled
  - Chemical samples collected for lab analysis when Raymark Waste is handled
  - Low safety threshold – STOP WORK before any potential risk to workers or community
- Vibration monitoring conducted
  - STOP Work = 0.5 inches/second



Chemical Sampling Port

Dust Monitoring Station



Personnel Monitoring



# Air Monitoring Results

- No exceedances of the applicable Daily Dust Action Levels during this period.
- No elevated chemical concentrations above the Action Level Criteria during this period.
- No intrusive activities 12/18 – 12/22, 12/25 – 12/29, and 1/1 – 1/5.



Surveyor verifying excavation depth at  
Lockwood Avenue property

# Vibration Results



Excavating Raymark Waste at 300 Ferry Blvd

- IGS lost connection with the 300 Ferry Blvd meter and was unable to recover data from 11/29, 11/30 and 12/04.
- There were a series of exceedances on 12/13 and 12/14 at 300 Ferry Blvd caused by excavating and compacting backfill directly next to the vibration monitor.
  - No complaints were received related to these minor and brief exceedances.



# Other Raymark Operable Units (OUs)

# Nine Operable Units

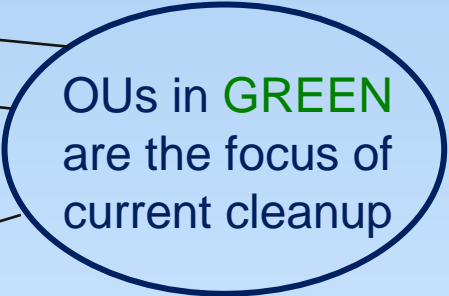
- OU1: Former facility
- OU2: Groundwater/Vapor Intrusion

---

- OU3: Upper Ferry Creek
- OU4: Raybestos Memorial Ball Field
- OU5: \*\*Shore Road Boat Club
- OU6: Additional Fill Properties

---

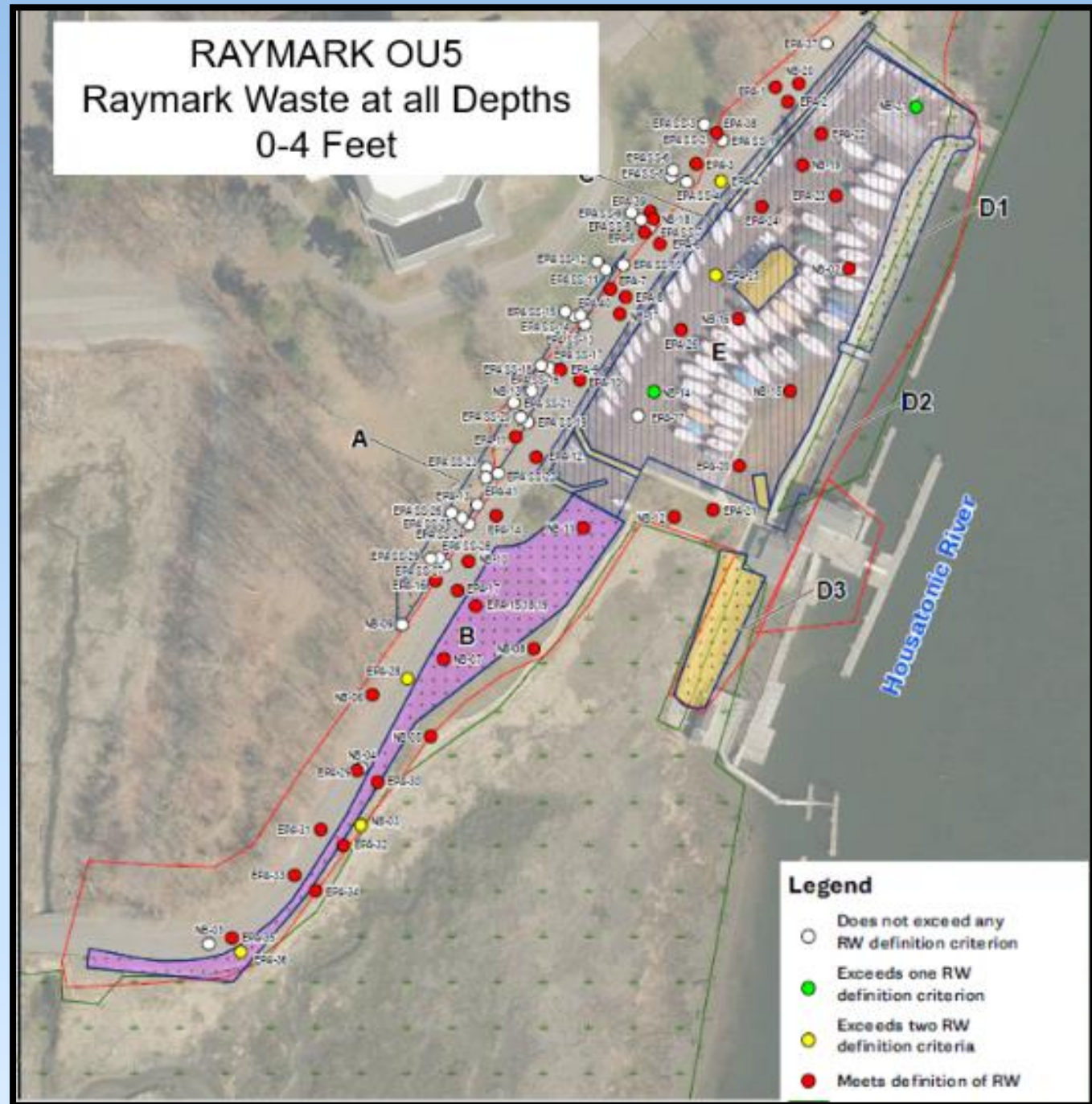
- OU7: Lower Ferry Creek
- OU8: Beacon Point Boat Launch
- OU9: Short Beach Park/Stratford Landfill



OUs in GREEN  
are the focus of  
current cleanup

# Record of Decision (ROD) for OU5 Shore Road Area

- Combination of excavation and capping (About 9,500cy)
- Incorporates Coastal Resiliency
- Expect to issue ROD in February
- Start cleanup in 2025



# Operable Unit 9

- Study area is approx. 94-acres including the former Stratford Landfill (northern ~30 acres) and Short Beach Park (southern ~64-acres).
- Continuation of Remedial Investigation (RI) activities including portions of Short Beach Park, Stratford Landfill and the Marine Basin
  - Investigation includes geophysics, borings/wells, landfill gas survey, conductivity testing, tidal study, ecological evaluation, etc.
  - Remedial Investigation report, Feasibility Study and decision document development.
- Anticipated Schedule:
  - Limited vegetation clearing & surface geophysics complete (Oct./Nov. 2023)
  - Soil boring & monitoring well installation ongoing (Dec. 2023 to ~Feb. 2024).
  - Data collection (Nov. 2023 to ~May 2024).



# Overall Raymark Schedule

- OU6 (Excavation Properties)
  - Now to June 2024: Lockwood Ave, EPA office/former ski shop and Third Ave
  - Morgan Francis: 2024 contracting/2025 cleanup
- OU4 (Consolidation Area)
  - 2024: Construct cap
  - 2025: Final restoration/planting
  - Complete stormwater pump station
- OU5 (Shore Road Area)
  - February: Issue Record of Decision (ROD)
  - 2024: Remedial design for cleanup
  - 2025–2026: Contracting/conduct cleanup
- OU7/OU8 (Wetland Areas) and OU9 (Landfill and Short Beach Park)
  - 2024-2026: Complete investigations and feasibility studies/issue proposed RODs
  - 2026 to 2029? Contracting/conduct cleanup



# Next CAG Meeting March 27<sup>th</sup> at 6:30pm

For more information about the Raymark Superfund Site, including copies of presentation slides, documents and meeting minutes, please visit: [stratfordct.gov/raymark](http://stratfordct.gov/raymark)