

Raymark Community Advisory Group Meeting

December 9, 2020



Virtual Meeting Guidelines

- o Everyone will be muted through the presentations - please stay muted to eliminate background noise.
- o Hold questions until the end of each presentation.
 - o Use the chat box.
 - o Ask questions related to the presentation topic
 - o Please be respectful of time, so everyone has a chance to speak
 - o Mute yourself after speaking
- o Be respectful and patient!
- o Talk one at a time.
- o **This meeting will be recorded.**

Agenda

- I. CALL TO ORDER – Alivia Coleman, Stratford Health
- II. INTRODUCTIONS – Alivia Coleman, Stratford Health
 - a. OVERVIEW OF VIRTUAL MEETING STRUCTURE
 - b. RULES OF CONDUCT
 - c. PERIODIC UPDATES
- III. STATUS:
 - a. RAYBESTOS MEMORIAL FIELD (OU4) UPDATE–Mike Looney, USACE
 - i. GRANDSTAND DEMOLITION
 - ii. SECURITY/PERIMETER FENCE/CAMERAS
 - iii. AIR MONITORING
 - 1. OVERVIEW
 - iv. POSI-SHELL COVER SYSTEM
 - b. OU6 PROPERTIES UPDATE – Jim DiLorenzo, EPA
 - i. 380 EAST MAIN STREET (DONE) – 53 yards (4 trucks)
 - ii. 200/190 FERRY BLVD (EARLY NOVEMBER) – ABOUT 500 yards (30 to 40 trucks)
 - iii. 250, 304. 340 EAST MAIN STREET (WINTER) – ABOUT 5,000 yards (400 to 500 trucks) with about 750 yards of the total going off-site (worst of the worst waste)
 - iv. DOT RAYMARK WASTE – ABOUT 275 YARDS (20 to 30 trucks)
- IV. ADJOURNMENT



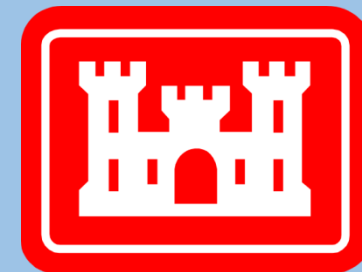
Community Advisory Group

- OU4 Ballfield Management/Camera
- First OU6 Parcels
- Air Monitoring Results

Raymark Industries, Inc. Superfund Site Stratford, CT

Jim DiLorenzo, EPA
Mike Looney, USACE
Dave Heislein, USACE

December 9, 2020

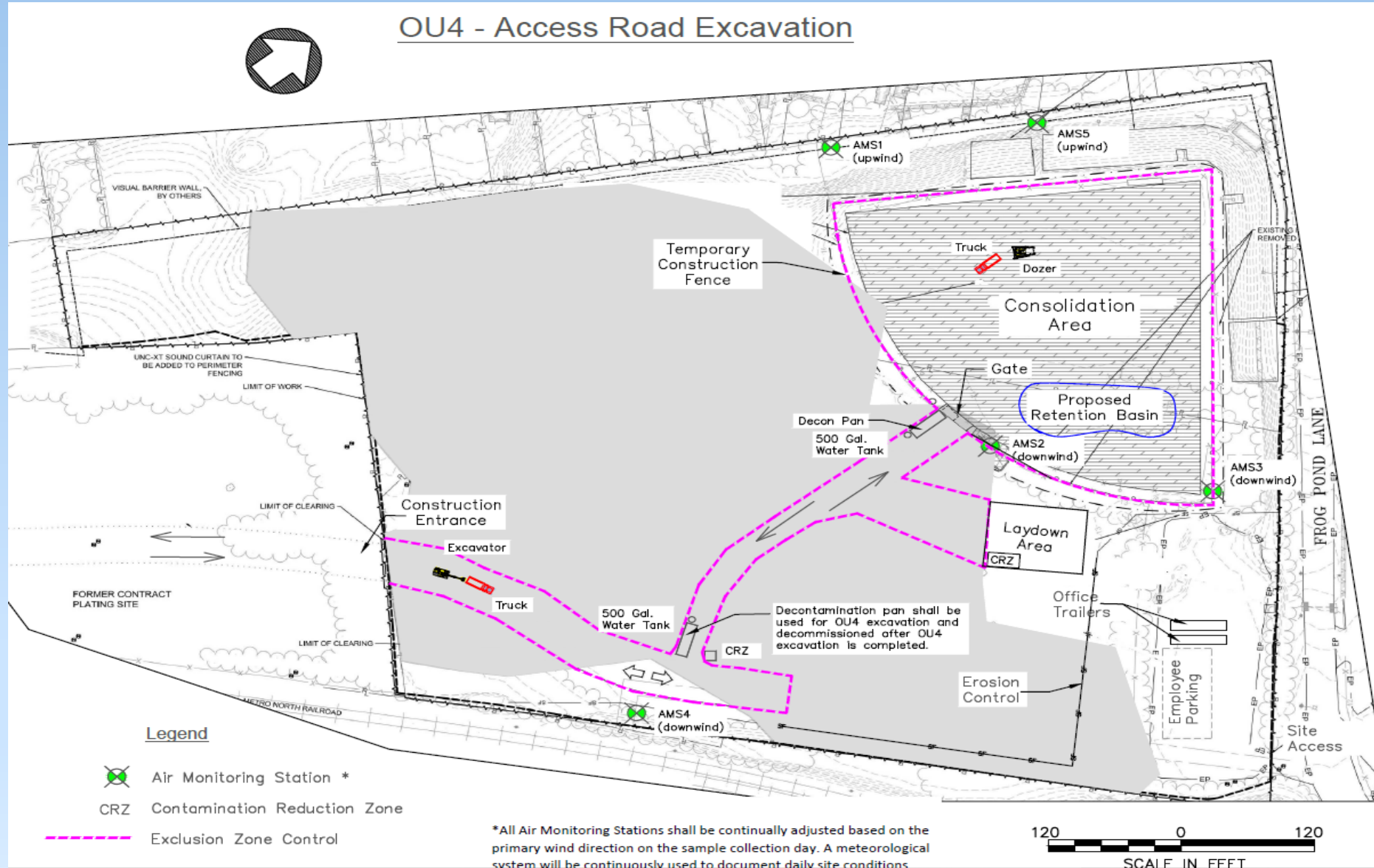


**US Army Corps
of Engineers®**

OU4 Ballfield Preparation

OU4 Ballfield Preparation

OU4 - Access Road Excavation



Grandstand Demolition



Grandstand Demolition



Nov 19, 2020 9:29:58 AM
550 Patterson Ave, Stratford, CT 06614, USA



Nov 19, 2020 9:39:40 AM
100 Frog Pond Ln, Stratford, CT 06614, USA



Oct 29, 2020 10:18:30 AM
100 Frog Pond Ln, Stratford, CT 06614, USA



Dec 3, 2020 11:28:01 AM
414 Patterson Ave, Stratford, CT 06614, USA

Network: Aug 31, 2020 10:41:34 AM EDT
Local: Aug 31, 2020 10:41:32 AM EDT
41°12'10.839"N -73°7'15.652"W
100 Frog Pond Lane
Stratford
Fairfield County
Connecticut

Site Security



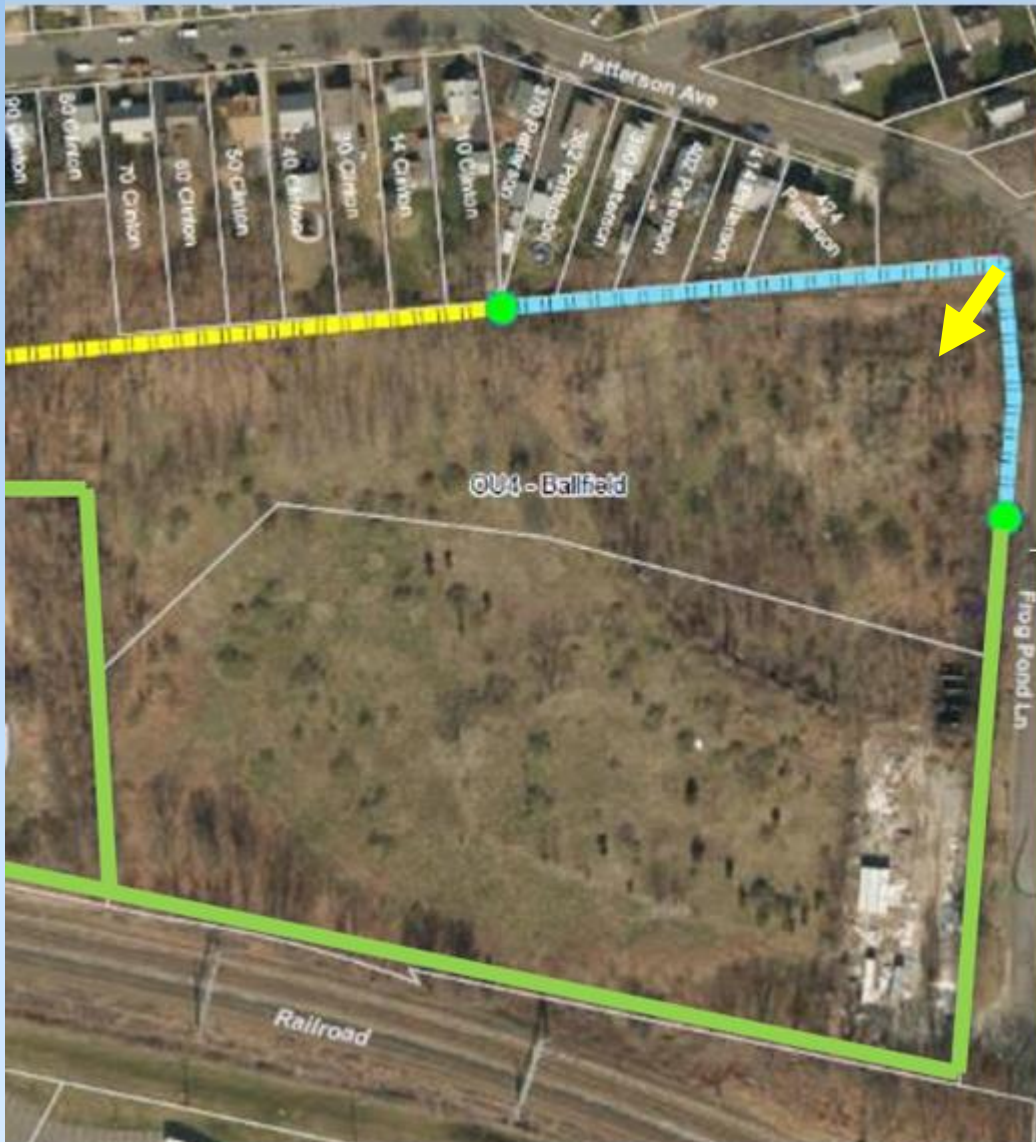
145 Frog Pond Lane
Stratford
Fairfield County
Connecticut



Site Security



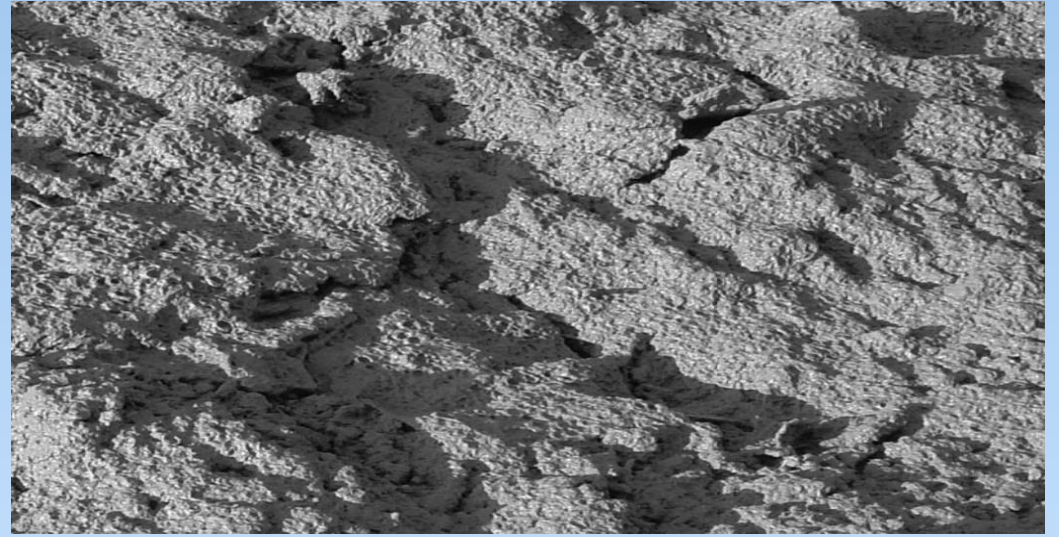
<https://www.ipcamlive.com/5fc7c13309700>



Posi Shell

- Used for dust and erosion control
- Better alternative to daily cover and plastic sheeting
- Long and short term protection from elements
- Applies as wet as slurry
- Can be applied via water truck with sprayer (i.e. hydroseeder)
- Composition is inert material, primarily clay and synthetic binder

Posi Shell



Questions?



- o Please ask questions relevant to the prior presentation.
- o Be respectful of time so everyone has a chance to speak
- o We will monitor the chat box for questions
- o Please be respectful and speak one at a time.

Air Monitoring

OU4 - Air Monitoring Results

- Since 10/28/20 public meeting Daily Average Dust Measurements 0.001 to 0.010 mg/m³
- One exceedance of Daily Average Dust Action Level 0.014 mg/m³ criteria 11/10/20
- Weather Service issued a Poor Air Quality warning that morning; all 5 meters above Dust Action Levels, wind out of the east (East Main St/RR Bridge)
- No ongoing activities on OU4 and impacted soil was covered;
Communicated with the Town, continued to wet OU4 surface
- One exceedance of lead in center of OU4 11/5/20, Lead non-detect at all OU4 perimeter monitors; Communicated with Town.
- No other chemical exceedances
- Likely source loading demolition debris for offsite disposal; continued to water work area. Completed loading 11/5/20, operation stopped.
- November 2020 - Predominant wind direction coming from southeast (Walmart area); Average wind speed = 5 mph
- Submitting weekly Air Monitoring and Vibration Monitoring Reports
- Reports posted on Town Health Dept – Raymark website
- Now using large mister (snow making machine) to keep OU4 wet



OU6 - Air Monitoring Results

- Started soil excavation at 190/200 Ferry Blvd 12/2/20
- Daily Average Dust Measurements 0.008 to 0.026 mg/m³
- Background concentrations elevated from state highway vehicle exhaust and industrial operations
- No exceedances of Daily Average Dust Action Level 0.019 mg/m³ criteria
- Dust Action Level specific to OU6 sites; based on cumulative potential health risk from 12 chemicals found on all OU6 sites
- No exceedances of chemical data from OU6 perimeter monitors or personnel monitoring



OU4 and OU6 – Dust Control

- Continuing site watering at OU4 and OU6 when site work/soil disturbance conducted
- OU4 - large size mister (snow making machine); covers all OU4 ballfield
- Waterline for equipment decontamination before leaving OU4
- Water truck at OU6 to control potential dust
- Water truck and pipes/equipment emptied each night at OU4 to avoid freezing of equipment
- Impacted soils at OU4 covered when not in operation; evaluating use of Posi-Shell to reduce water use and avoid freezing surface



OU4 and OU6 – Soil Transportation

- Continue compliance with Traffic Management Plan and truck routes
- OU4 haul roads installed to provide clean corridor for soil transport from OU6
- OU4 soil disposal ramp being used so trucks stay out of impacted **soil in** ballfield
- Dedicated equipment within OU4 impacted soil and OU6 excavation areas
- OU6 roll-off containers on paved surface inside work area, not in impacted soil
- Two sealed roll-off containers in use for soil transport, one truck doing round trips; minimize traffic interruption



Questions?



- o Please ask questions relevant to the prior presentation.
- o Be respectful of time so everyone has a chance to speak
- o We will monitor the chat box for questions
- o Please be respectful and speak one at a time.

First OU6 Properties

(A Stepped Approach)

380 E. Main Street

- First of the OU6 removals
- Completed on September 16th and 17th
- Estimated 40 yds
- Actual 53 yds (4 trucks)
- Active wetting throughout
- Air monitoring stations and portable devices at both 380 E. Main and ball field
- Tire wash station





380 East Main Street Removal

- Retaining wall removed
- AC unit temporarily supported
- Air monitoring stations placed



190/200 Ferry Boulevard

- 2nd and 3rd OU6 properties
- Estimate 500 yds (about 40 trucks)
- Excavation started on Dec 2nd
- Expect to finish excavation by Dec 1st
- Restore/repave on Dec 21st
- Active wetting as needed
- Air monitoring stations and portable devices at both 190/200 Ferry and the ballfield











ALL CONTAINERS MUST HAVE:



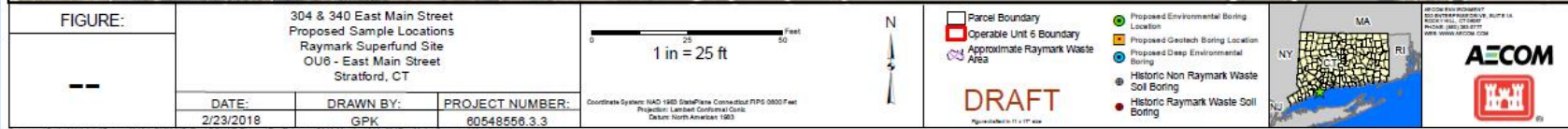
- 1.) Tight Cover
- 2.) Full Gasket



250, 304 and 340 East Main Street



- ~ 5,000 yds or 400 trucks
- ~ 700 yds or 60 trucks PHC waste
- Begin in early February
- About 6 weeks to complete



Questions?



- o Please ask questions relevant to the prior presentation.
- o Be respectful of time so everyone has a chance to speak
- o We will monitor the chat box for questions
- o Please be respectful and speak one at a time.

Thank you for joining!

- o Visit townofstratford.com/Raymark for updates, meeting dates, meeting recordings and slides
- o **Next Meeting January 27, 2021**
- o Email Alivia at: acoleman@townofstratford.com with further questions or feedback.

