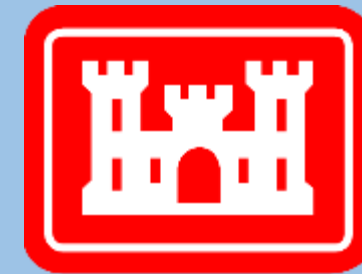


Community Advisory Group

Raymark Industries,
Inc. Superfund Site
Stratford, CT

Jim DiLorenzo, EPA
Mike Looney, USACE
Dave Heislein, USACE

March 30, 2022



**US Army Corps
of Engineers®**

To follow along with the presenters visit:

[Stratfordct.gov/Raymark](https://stratfordct.gov/Raymark)

Virtual Meeting Guidelines

- Everyone will be muted through the presentations - please stay muted to eliminate background noise.
- Hold questions until the end of each presentation.
 - Use the chat box.
 - Ask questions related to the presentation topic
 - Please be respectful of time, so everyone has a chance to speak
 - Mute yourself after speaking
- Be respectful and patient!
- Talk one at a time.
- **This meeting will be recorded.**

Remembering Joan Joyce

1940-2022



Joan Joyce as a young pitcher for the Raybestos Brakettes.
Tony Renzoni / Contributed photo to CT Post

AGENDA

- INTRODUCTIONS AND MEETING RULES
- NEW EPA STRATFORD OFFICE
- OPERABLE UNIT 6 (OU6) UPDATES
- RAYBESTOS MEMORIAL FIELD (OU4)
- STORMWATER CONVEYANCE SYSTEM
- AIR MONITORING
- OVERALL PROJECT SCHEDULE

EPA Stratford Office

- 300 Ferry Blvd (former Ski Shop)
- 5-year lease with a 5-year option
- Office space for EPA, USACE, and contractors
- Benefits:
 - Publicly accessible
 - Space for future community meetings
 - Is an OU6 parcel (1 less business now)
 - Access to other OU6 parcels
 - Support for other OU6 parcels
 - Egress and laydown for OU3 cleanup





PAT MUNGER CONSTRUCTION

GENERAL CONTRACTOR:
Pat Munger Construction Inc.
750 East Main Street
Stratford, CT 06405
203-483-3845
info@mungerconstruction.com

PROPOSED RENOVATIONS FOR
**SEVENSON ENVIRONMENTAL
FIELD OFFICE**
300 FERRY BOULEVARD, STRATFORD CT

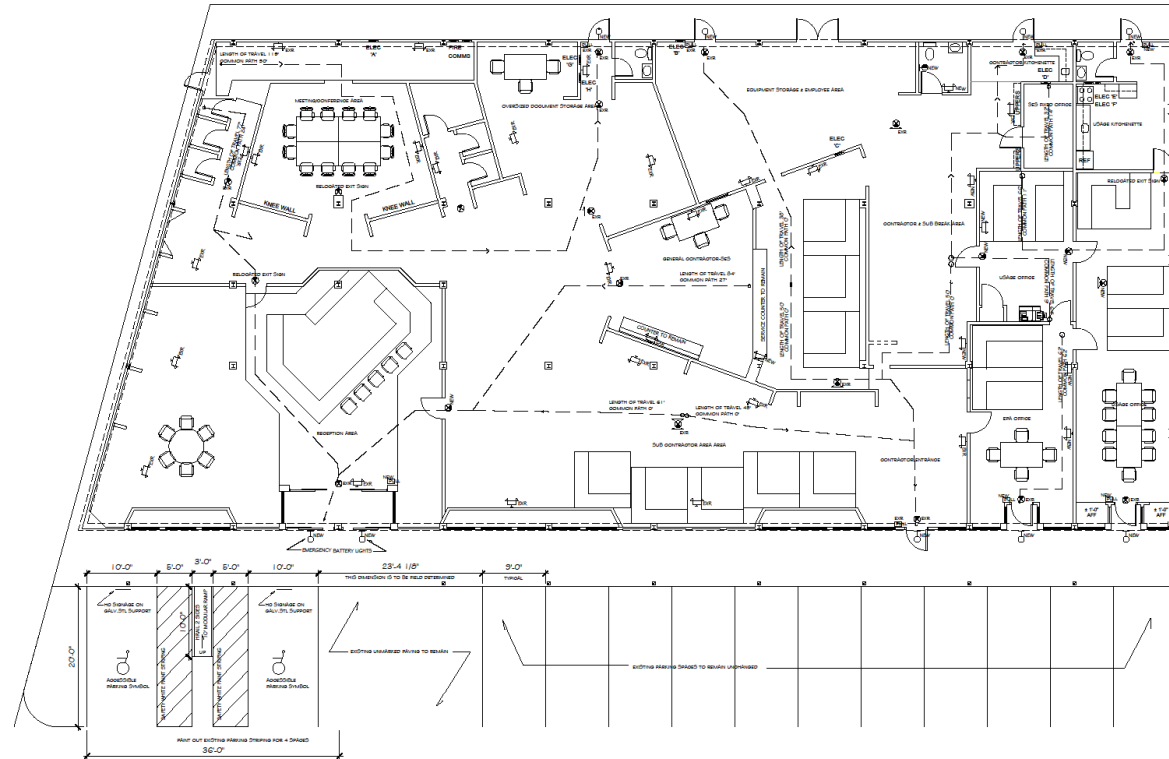
PROJ #: 21-0280
SCALE: 1/8" = 1'-0"
DRAWN BY: SAS
STAGE: PERMIT
DATE: 10/21/21

DESIGN PROFESSIONAL SEAL:

REVISIONS:

SHEET TITLE
LIFE SAFETY PLAN

LSP1



PROPOSED LIFE SAFETY PLAN
SCALE: 1/8" = 1'-0"



LEGEND

- EXR: EXISTING TO REMAIN
- EXR: RELOCATED EXIT SIGN
- NEW: NEW EXIT SIGN WITH DIRECTIONAL ARROWS
- EXR: EXISTING FULL STATION TO REMAIN
- NEW: NEW FULL STATION
- EXR: EXISTING EMERGENCY LIGHTING TO REMAIN
- NEW: CALL FOR AID REMOTE LAMP OUTSIDE DOOR
- NEW: NEW EXTERIOR MEANS OF EGRESS LIGHTING
- NEW: PATH/DIRECTION OF EMERGENCY EGRESS

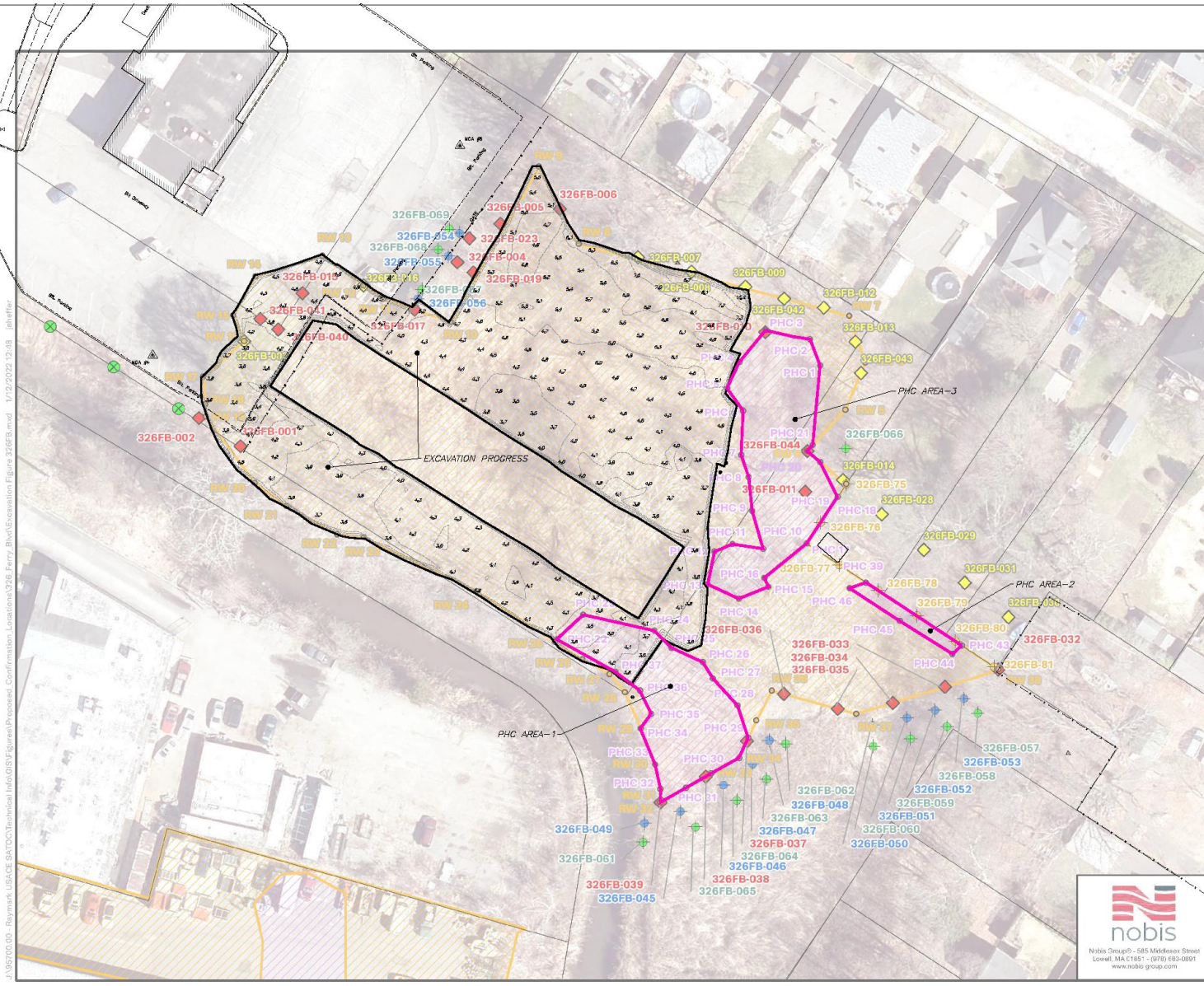


OU6 Updates

Vacant Lots Behind the Blue Goose



- App. 10,000yds (500 trucks)
- Original estimate 4,400yds
- App. 1,500yds PHC (100 trucks)
- Original estimate 660yds PHC
- Started clearing trees on January 18th
- Began excavation on Feb 2nd
- Removed a large foundation
- RW: 6,777yds (627 trucks)
- PHC: 755yds (67 trucks)
- Expect to complete in April



Note:
 1. Raymark Waste and Non-Raymark Waste borings, and RW Areas from the Remedial Design Drawings and Pre-Design Investigation.
 2. Locations of site features depicted hereon are approximate and given for illustrative purposes only.

Legend

Vertex Type

- PHC Extent
- RW Extent

Boring Type

- ⊗ Initial Confirmation Sample
- ⊕ Post Construction Confirmation Sample
- ⊖ Sample to be held at the laboratory
- ⊕ Step-Out Sample

□ Approx. Survey Boundaries
 ▨ Raymark Waste Limits
 ▨ PHC

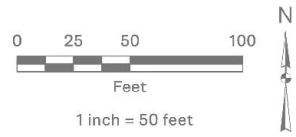
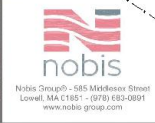


FIGURE 326FB-A

RW AND PHC EXTENT VERTICES
 VACANT LOT BEHIND 326 FERRY BLVD
 RAYMARK SUPERFUND SITE
 STRATFORD, CONNECTICUT



PREPARED BY: JTS	CHECKED BY: AR
PROJECT NO. 95700.00	DATE: DECEMBER 2021

Progress as of March 7th

J:\95700.00 - Raymark USACE SATCO Technical Info GIS\Figures\Proposed Confirmation Locations\326 Ferry Blvd\Excavation Figure 326FB.mxd 1/12/2022 12:48 jleffer

Initial Tree Clearing



February 9, 2022

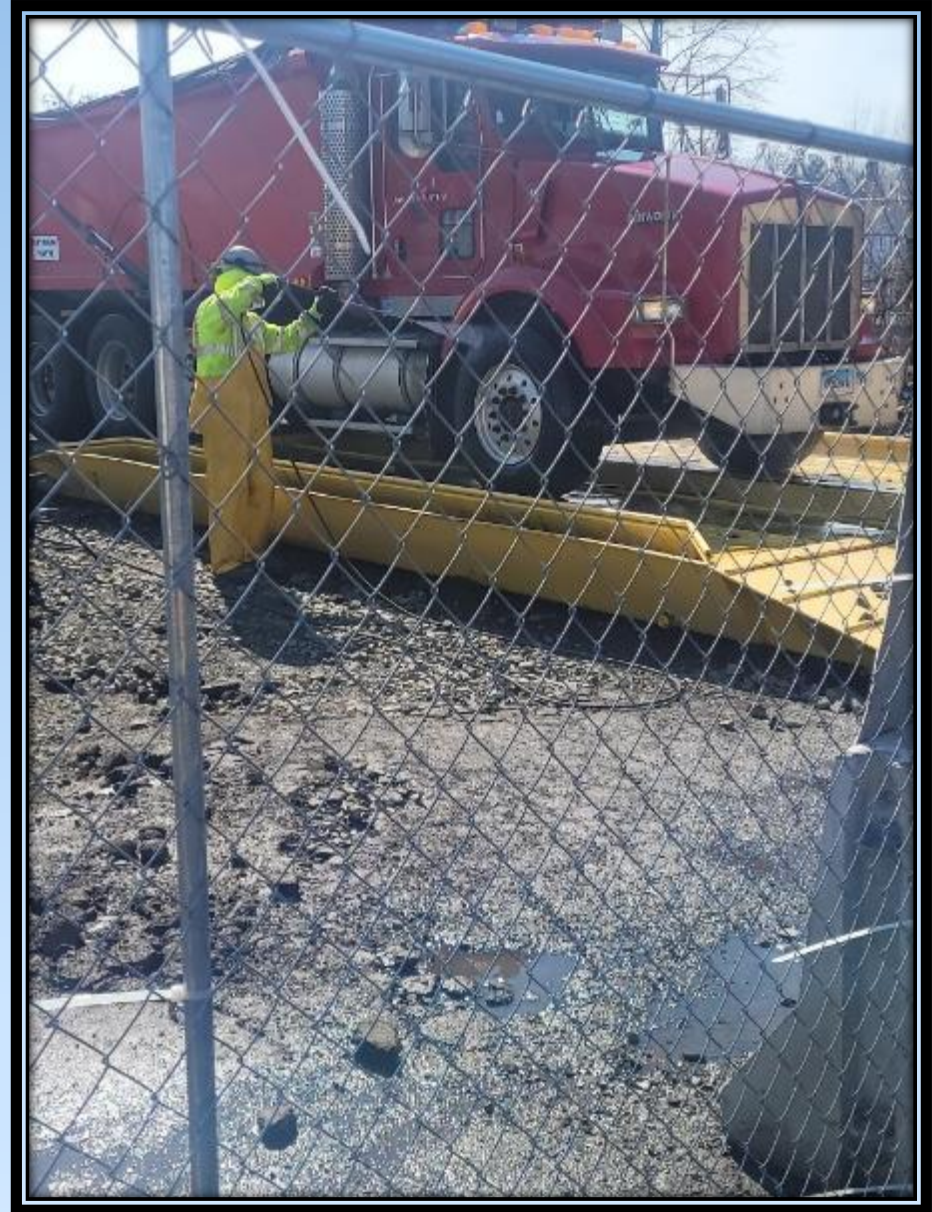


March 24, 2022





Air Monitoring Station Tire Wash Tray

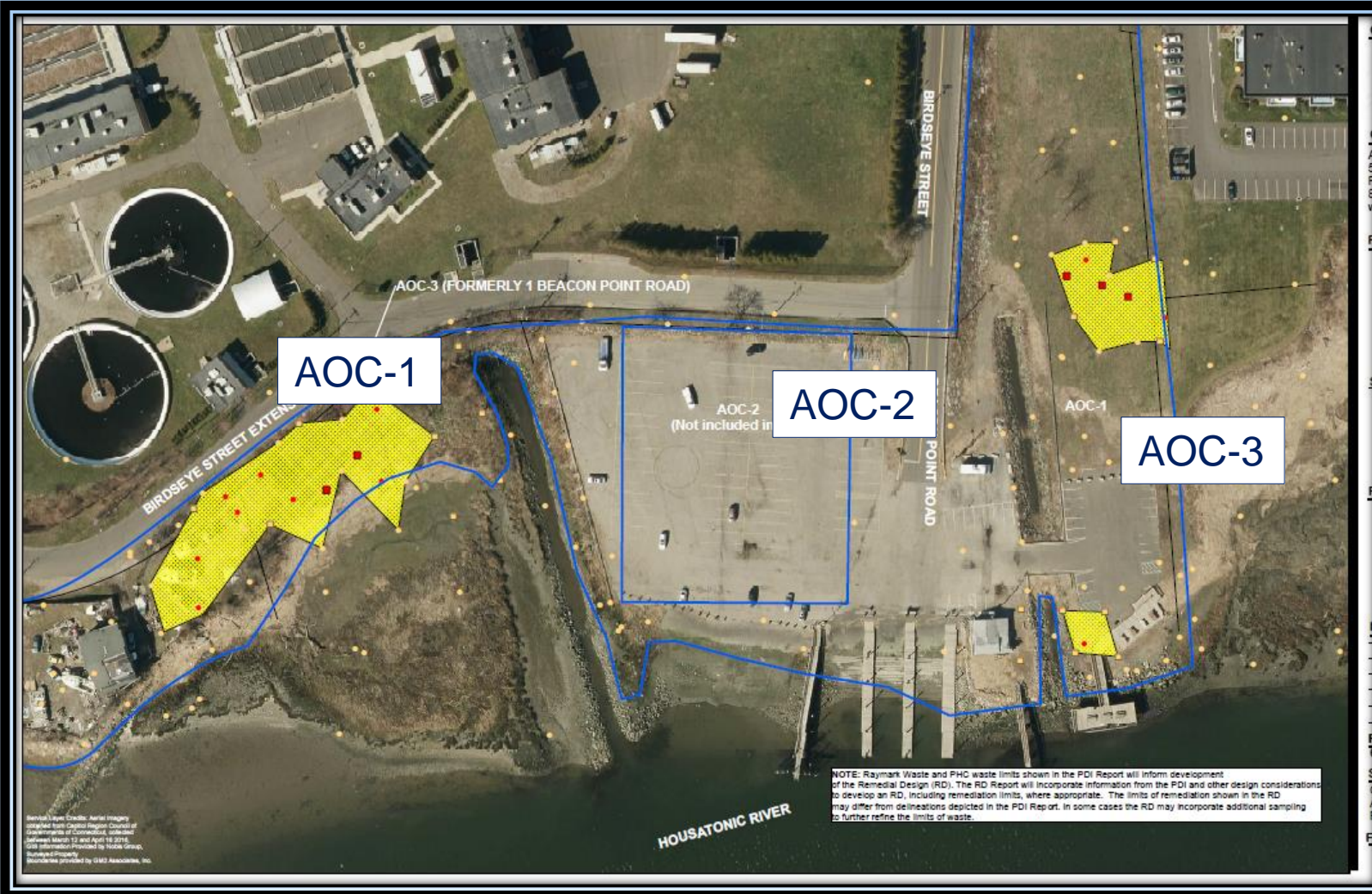


OU6 Area	Location	Excavation Dates	Volume (cy)	Number of truck trips?		Number of Properties	Notes
Glyne Manufacturing	380 East Main	Sept 16 -17, 2020	51.70	4		1	Phase 1 ELUR needed
Karate Studio	190 Ferry Boulevard	Dec 2 - 10, 2020	87.31	10		1	Phase 1 ELUR needed Not in 2016 ROD
Liquor Store	200 Ferry Boulevard	Dec 2 - 10, 2020	481.83	64		1	Phase 1 ELUR needed
DOT ROW along 190/200 Ferry Blvd	190/200 Ferry Boulevard ROW	Dec 2 - 10, 2020	109.30	11		1	Phase 1 ELUR needed Not in 2016 ROD
DOT Exit 33	Barnum Ave	Jan 19 – 20, 2021	345.57	19		1	DOT via Haul Road Not in 2016 ROD
Ashcroft (front), Dry Cleaner and Hair Salon	250, 304 and 340 East Main Street	Feb 16 – April 19, 2021	2,785.3	251		3	Phase 1 ELUR needed
			794.60	60		3	To Emelle, AI
302/350 East Main Street	302/350 East Main Street	Sept 15 - 16, 2021	127	9		2	Phase 2 ELUR needed Not in 2016 ROD
DOT ROW	Ferry Blvd and East Broadway	Sept 20 to Oct 1, 2021	430	47		1	Phase 2
171 Ferry Blvd	Snaxx Plus Convenience Store	October 4 to 19, 2021	389	41		1	Phase 2 ELUR needed Not in 2016 ROD
Ashcroft Rear	250 East Main Street	June 9 to Nov 3, 2021	9,281	745		1	Phase 2 ELUR needed
			377	35		1	To FTS/bind lead
Wooster Park	Quail Street	Nov 9, 2021 to Jan 5, 2022	4,872	433		1	Phase 1 ELUR needed
			130	15		1	To FTS/bind lead
Vacant Lots	Behind 326 FB	(as of March 23 rd)	6,777	627		2	Phase 2 ELUR needed
			755	67		2	To FTS/bind lead
TOTALS TO DATE =		Raymark Waste	25,350	2,140	16		
		PHC Waste	2,057	177	7		

OU6 Remediation Tracking Table

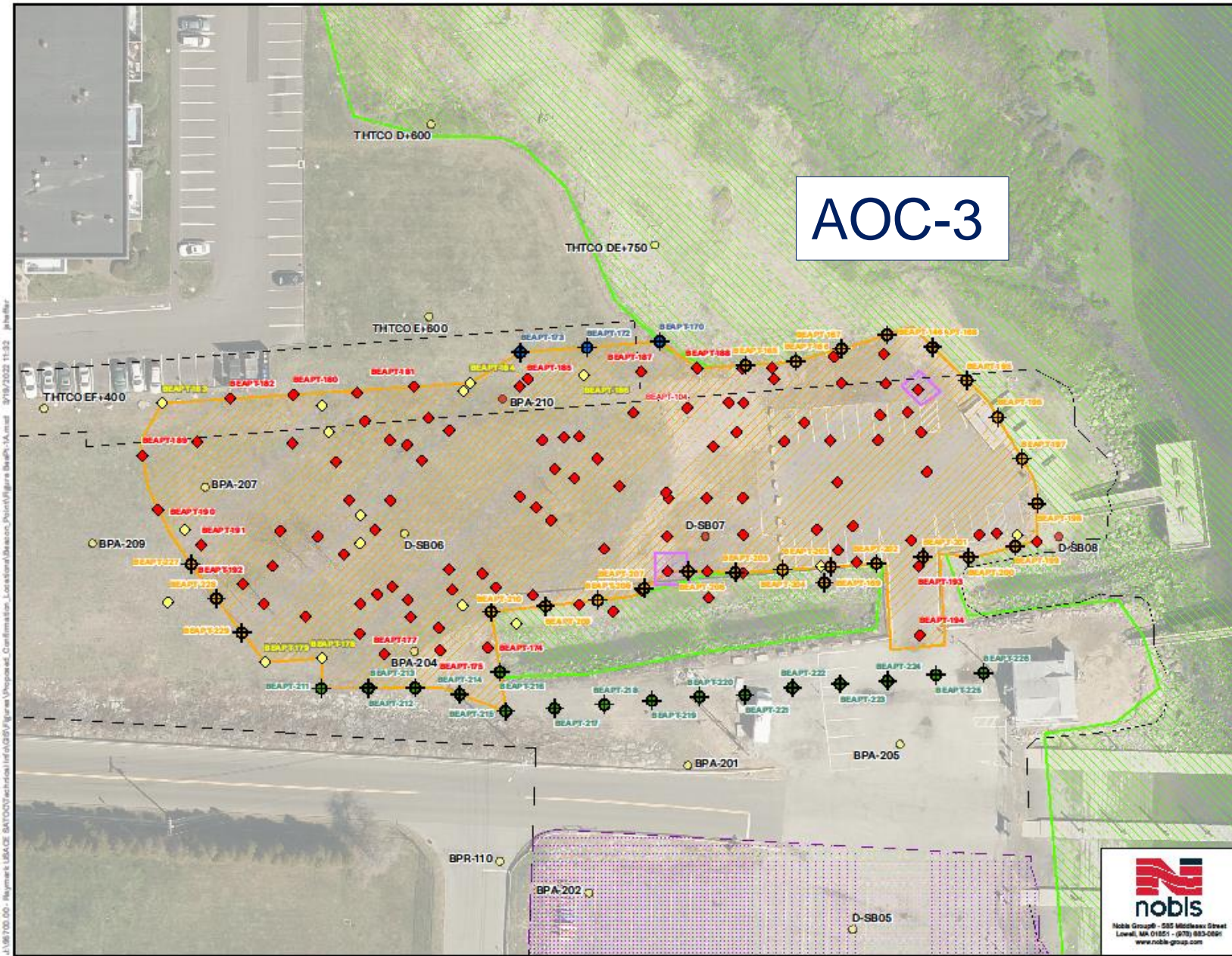
PHC volumes in RED font

Beacon Point



- 3 Areas of Concern (AOCs)
 - AOC-1: Town and Private Boat Yard
 - AOC-2: 2011 ROD/ELUR in place
 - AOC-3: Town and Condo
- RW: 11,000 yds (700 trucks)
- PHC: 250 yds (20 trucks)
- Two Phases Remediation
- AOC-1:
 - 7,700 yds (250 yds PHC)
 - May to July 2022
- AOC-3:
 - 3,500 yds
 - Sept to Dec 2022

AOC-3



Note:
USACE evaluation of sample results determined that sample did not meet all thresholds for step-out criteria and further step-out sample collection is not required.

Raymark Waste and Non-Raymark Waste borings, and RW Areas from the Remedial Design Drawings and Pre-Design Investigation.

Property boundaries are derived from the Remedial Design Drawings.

Historical Samples 0-4' Include samples collected from the following intervals: 0-4' bgs, 1-4' bgs, 2-4' bgs, 1-3' bgs, 2-3' bgs, and 3-4' bgs.

Historical Samples 0-2' Include samples collected from less than or equal to 2' bgs.

Raymark Waste designation in historical samples are based on exceeding the Raymark Waste Criteria.

Legend

- Pre Construction Confirmation Sample
- Post Construction Confirmation Sample
- Sample to be held at the laboratory

Confirmation Stepout Sample Required?

- Yes
- No

Historical Samples +4'

- Raymark Waste
- Non-Raymark Waste
- Approx. Survey Boundaries
- ELUR Boundary
- Raymark Waste Limits
- PHC
- Operable Unit 8

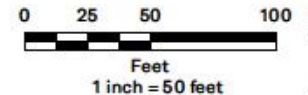


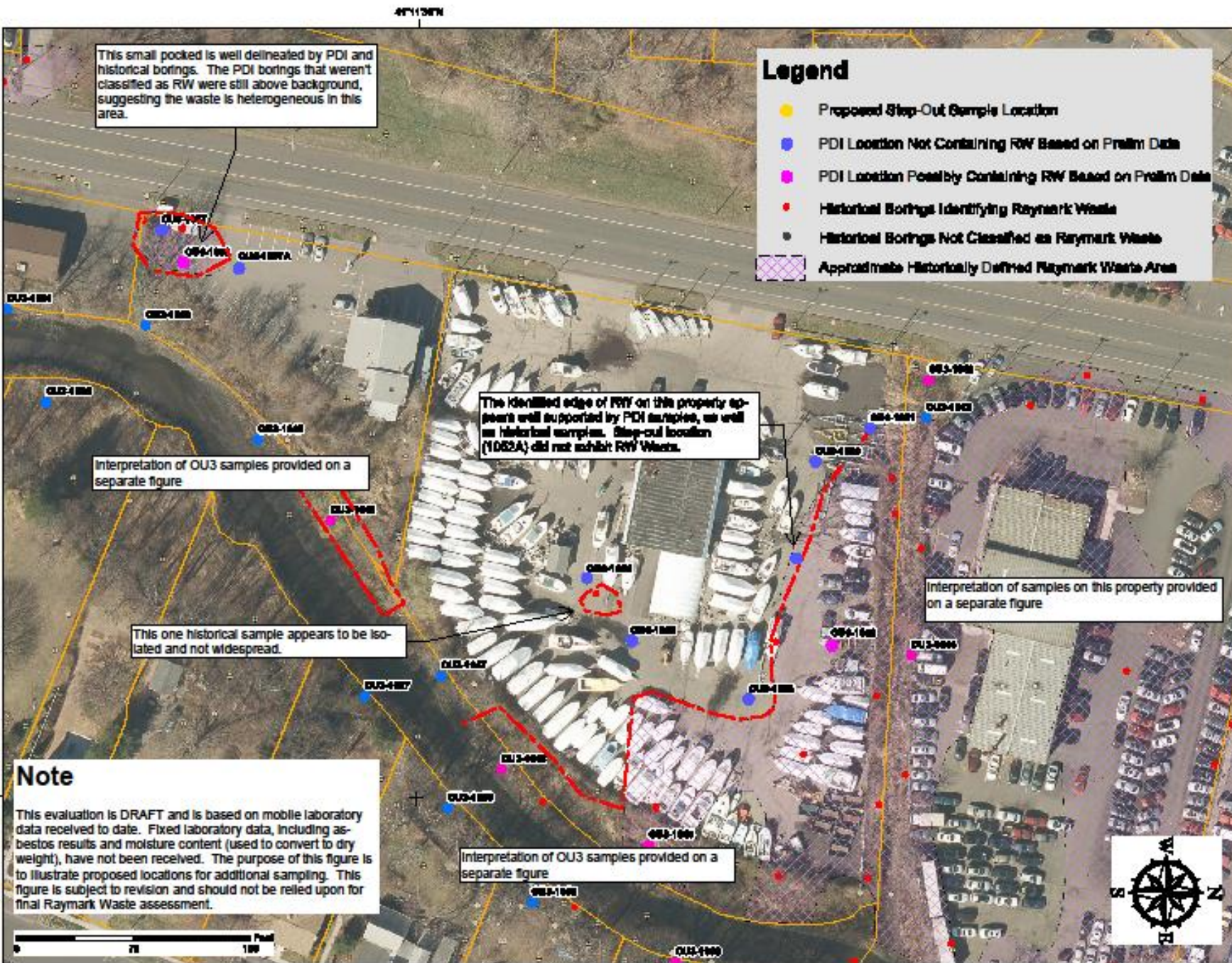
FIGURE BEAPT-1A

PROPOSED CONFIRMATION LOCATIONS
BEACON POINT & 1 BEACON POINT ROAD
RAYMARK SUPERFUND SITE
STRATFORD, CONNECTICUT

PREPARED BY: JTS	CHECKED BY: AR
PROJECT NO. 95700.00	DATE: MARCH 2022



J:\187100_00 - Raymark USA OE BAYCOOY Technical Info\BEPV\Figure\Proposed Confirmation Locations\MapDocs\Nobis\Figure BEAPT-1A.mxd 3/19/2022 11:52 jph/Re



Hitchcock Marina

- Summer of 2022
- Minimal boats (+/- 20)
- RW limited to left side

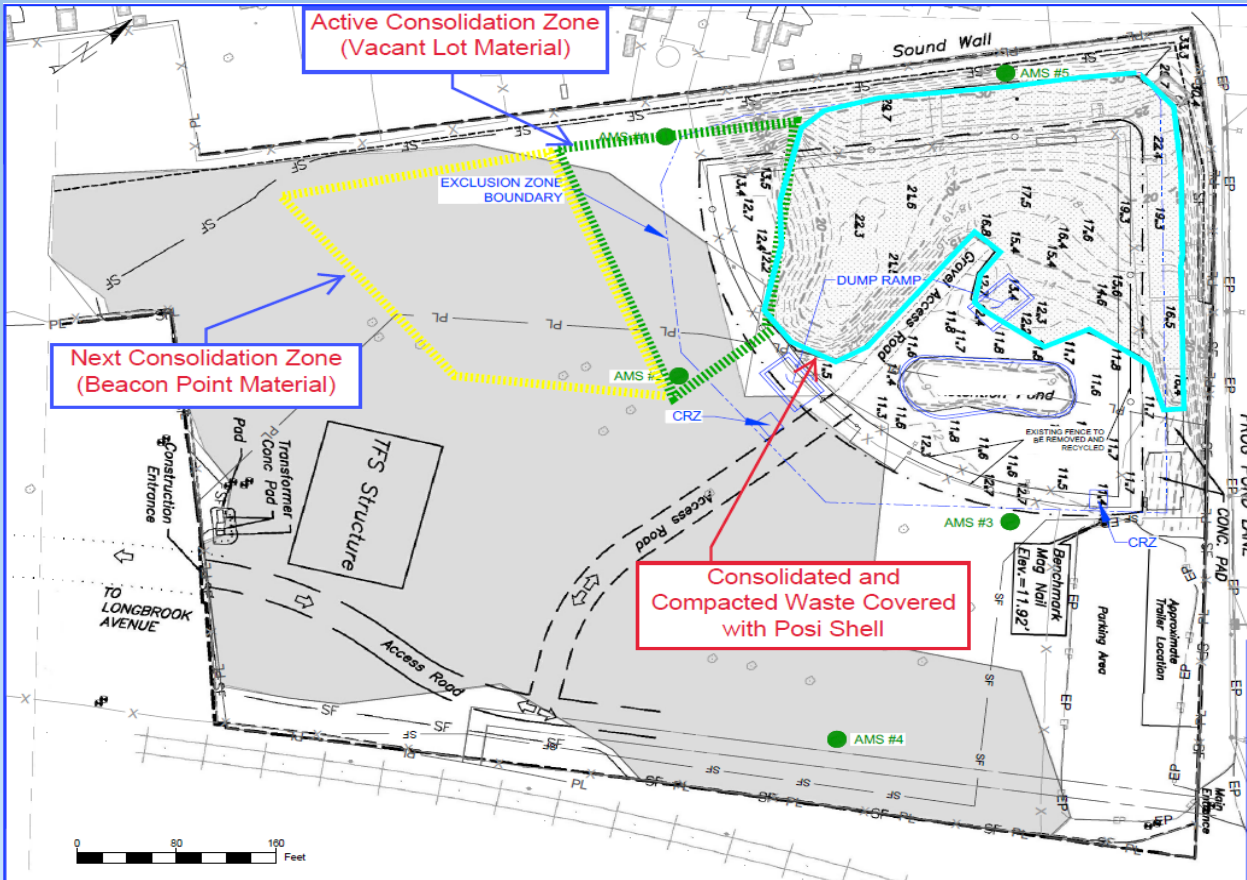
OU4 Updates

OU4 Ballfield Work Completed or Ongoing Since January



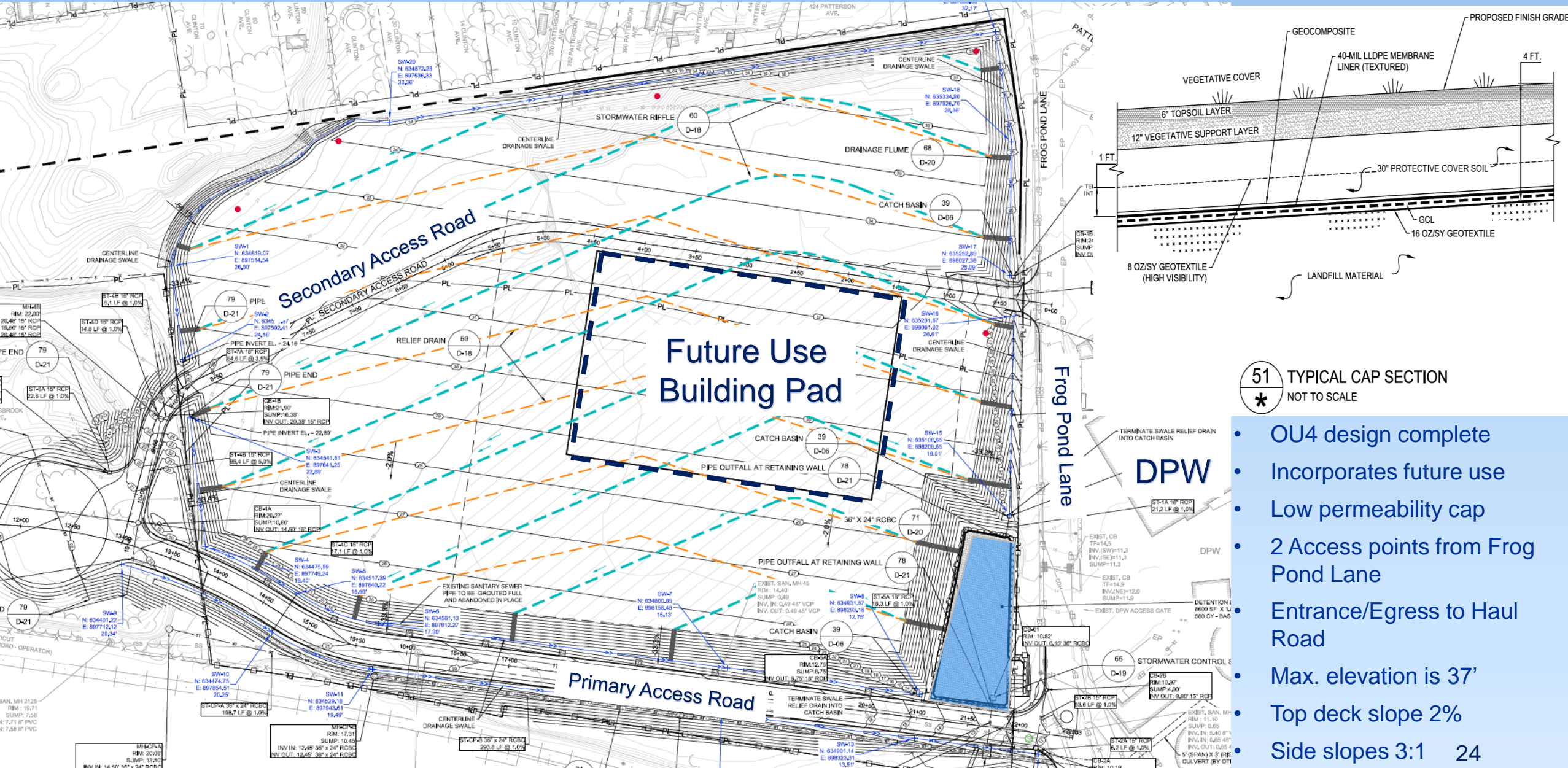
- Approximately 25,000 CY of material has been consolidated, compacted and covered to date
- Winter operation required stockpiling and covering waste, compaction to resume later this spring
- Posi-Shell cover applied on all previously imported Raymark Waste at the Ballfield
- 5 perimeter air monitors at OU4 are operating daily
- Stormwater conveyance line contract awarded
- Former Ballfield/ OU4 site and cap design complete

OU4 Consolidation Area



- Approximately 25,000 CY of material has been consolidated, compacted and covered
- Winter operation required stockpiling and covering waste, compaction to resume later this spring
- Active consolidation area expanding towards Contract Plating Site
- Additional clearing later this spring

OU4 Cap and Site Design



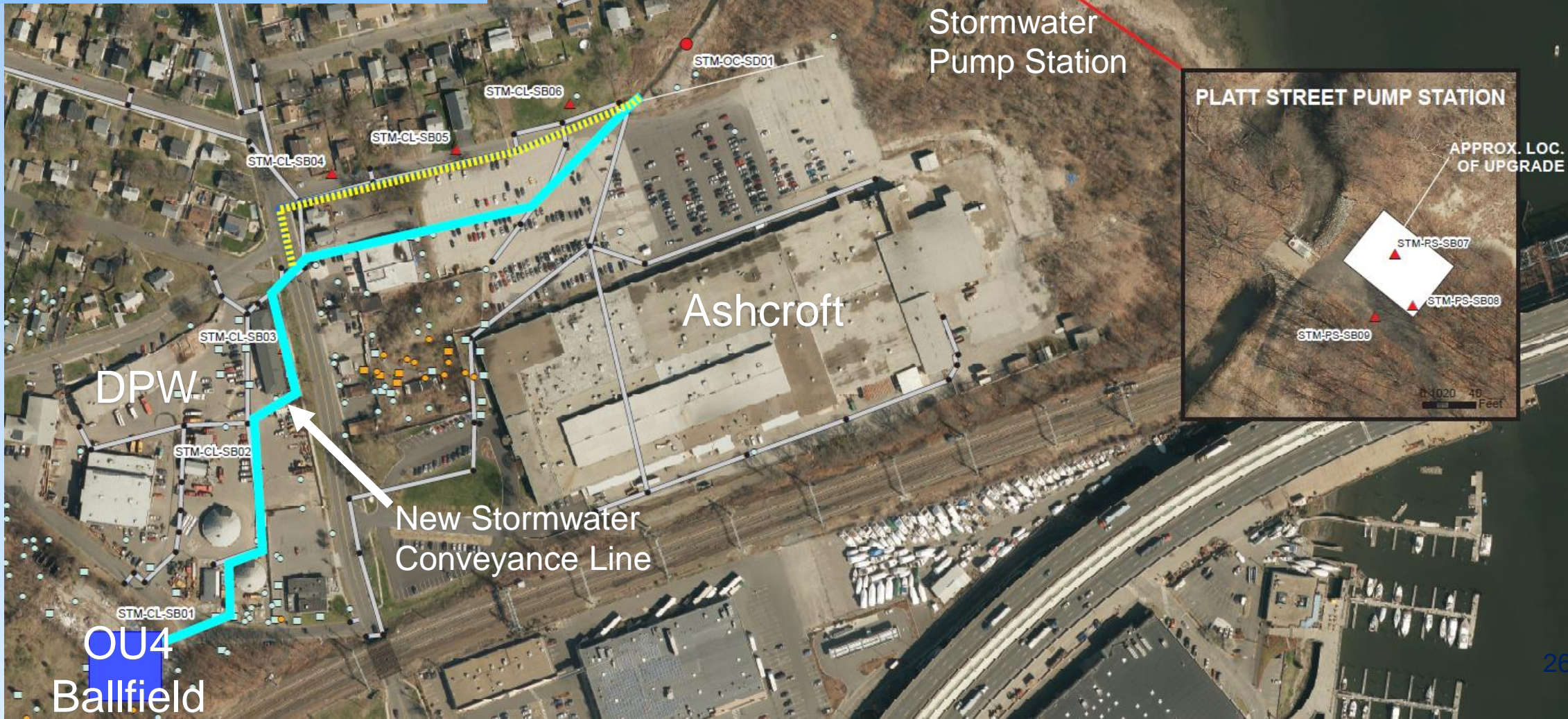
51 TYPICAL CAP SECTION
* NOT TO SCALE

- OU4 design complete
- Incorporates future use
- Low permeability cap
- 2 Access points from Frog Pond Lane
- Entrance/Egress to Haul Road
- Max. elevation is 37'
- Top deck slope 2%
- Side slopes 3:1

OU4 Stormwater System

- Contract Awarded
- Construction Start Late May
- Start in open channel North of Ashcroft
- Construction expected to take approximately 9 months

Stormwater System Upgrades



New Pump Station

- 4 Axial Flow Pumps
- 200 CFS Capacity
- Operates during significant storm and high-water events
- Masonry Pumphouse



Air Monitoring

OU4 - Air Monitoring Results

- Since 1/26/22 public meeting Daily Average Dust = 0.003 to 0.013 mg/m³
- No exceedances of the OU4 Dust Action Level criteria (0.014 mg/m³)
- All five dust meters and sample collection systems in operation
- One personnel chemical sample collection system
- No health and safety risks to workers or residents
- No chemical action levels exceeded
- Chemical analyses found wood fibers, no asbestos
- Posting Weekly Air Monitoring, Chemical Data and Vibration Monitoring Reports on Town Raymark website



OU6 - Air Monitoring Results

- Soil excavation and Restoration at Vacant Lot
- Daily Average Dust Measurements 0.000 to 0.013 mg/m³
- No exceedances of OU6 Dust Action Level criteria (0.019 mg/m³)
- Three dust meters and sample collection systems in operation
- One personnel chemical sample collection system
- No health and safety risks to workers or residents
- No chemical action levels exceeded
- Dedicated water truck at OU6 to manage dust
- Posting Weekly Air Monitoring Reports,
- Chemical Data, and Vibration Monitoring Reports on Town Website



Remediation Schedule

- September 2020
 - All East Main Street properties remediated
 - Several properties on Ferry Boulevard remediated
 - Quail Street as Wooster Park remediation
- **Mid-January to April 2022**
 - **Remediate Vacant Lots**
 - **Approximately 3 months to complete**
- April to December 2022
 - Beacon Point, Hitchcock Marina, Third Avenue? Lockwood?
- 2023
 - Remediate Ferry Creek and Remaining Ferry Boulevard properties
 - Morgan Francis?
- 2024
 - Construct Impermeable OU4 Cap



Construct
Stormwater System

Questions?

- Be respectful of time so everyone has a chance to speak
- Please speak one at a time.
- We will monitor the chat box for questions



Next CAG Meeting May 25 at 6:30pm

For more information about the Raymark Superfund Site, including copies of presentation slides, documents and meeting minutes, please visit: stratfordct.gov/raymark

Thank you for joining!

- Visit stratfordct.gov/Raymark for updates, contact information, air monitoring results, meeting dates, meeting recordings and Powerpoint slides
- Email Alivia at: acoleman@townofstratford.com with further questions, concerns, feedback or to sign up for email distribution list.